

SolarWinds Platform Installer for SQL Sentry

Last Modified on 03 April 2023

In this article:

- [Overview](#)
 - [Use Cases](#)
- [Architecture](#)
- [Getting Started](#)
 - [Run as Administrator](#)
 - [Case-Sensitivity](#)
 - [Parameters & Examples](#)
 - [Upgrading from another installation method](#)
- [Command Line Interface Commands](#)
 - [General Commands](#)
 - [Agent Commands](#)
 - [Package Commands](#)
 - [System Commands](#)
- [Summary of Installation](#)
- [Initial Installation](#)
 - [Installing the CLI and Central Service](#)
 - [Connecting to the Central Service and Adding Users with the CLI](#)
- [Installing the Remote Agent with the CLI](#)
- [Installing the LaunchPad with the CLI](#)
- [Installing SQL Sentry Components via Packages](#)
 - [Requirements](#)
 - [Installation Packages](#)
 - [Upgrade Packages](#)
 - [Installing the Remote Agent with the Installer](#)
 - [Installing the Launchpad with the Installer](#)
- [Upgrading the Central Service](#)

Preview Feature Availability:

The Solarwinds Platform Installer for SQL Sentry is **available as a preview** installation for SQL Sentry versions 2022.4 and later.


⚠ Warning: The SolarWinds Platform Installer for SQL Sentry is available as a preview installation for SQL Sentry and **does not support all features such as site configuration.**

Overview

The SolarWinds Platform Installer for SQL Sentry improves upon the Enhanced Platform installer (EPI) for SQL Sentry by allowing you to deploy, manage, and upgrade SQL Sentry components through a command line interface from a single location. The SolarWinds Platform Installer for SQL Sentry further increases the speed and simplicity of installing and upgrading SQL Sentry implementations with multiple Monitoring Services and Clients without having to manually run through the installer on each machine. Install the single WebApi Central Service on a central location, install a SolarWinds Platform Installer Agent on each machine that will house a SQL Sentry Monitoring Service or SQL Sentry Portal, and install the SolarWinds Platform Installer Launchpad on each machine that will house a SQL Sentry Client. Use the Command Line interface to push package installations, upgrades, or removals all from the Central Service WebApi location.

Use Cases

Use Case	Steps Summary
First time SQL Sentry multi Monitoring Service and Client Installation:	<ul style="list-style-type: none"> • Download and install the Central Service on your central location • Download and install Agents on each server that will house a SQL Sentry Monitoring Service or SQL Sentry Portal <ul style="list-style-type: none"> ◦ Specify the location/ connection to the Central Service ◦ Specify the packages to be enabled by the Central Service • Download and install Launchpad on each server that will house a SQL Sentry Client
Upgrading a SQL Sentry multi Monitoring Service and Client Installation:	<ul style="list-style-type: none"> • Download the Upgrade Package and push it to the Central Service • Use the CLI to push the upgrade package to the applicable Remote Agents and Launchpads

 **Additional Information:** For information about upgrading a Setup Wizard Installation or Enhanced Platform Installer installation to the SolarWinds Platform Installer for SQL Sentry, see the [Upgrading article](#).

Architecture

The SolarWinds Platform Installer for SQL Sentry consists of these major components:

SolarWinds Platform Installer Component	Description

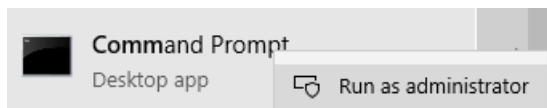
SolarWinds Platform Installer Component	Description
Central Service	The SolarWinds Platform Installer Central Service is a Web API that is installed in a singular command location. All of the actions available with the SolarWinds Platform Installer are communicated to installed agents through this Web API.
Command Line Interface	The SolarWinds Platform Installer Command Line Interface is used to communicate commands to the Central Service.
Agent	The SolarWinds Platform Installer Agent is a service that manipulates (stops, starts, installs, uninstalls) components. It may delete and create directories, delete files and copy files from packages to locations defined by package metadata, run scripts embedded in packages, and validate packages. The Agent should be installed on all machines that will receive the SQL Sentry Monitoring service or SQL Sentry Portal service.
Launchpad	The SolarWinds Platform Installer launchpad provides non-technical users with an easy to use interface to install the SQL Sentry Client. Users will select the available configuration from the launchpad, and the launchpad will install the SQL Sentry Client on the machine. The launchpad can be used to open the SQL Sentry Client, and will also notify you when the Client needs to be upgraded.
Packages	SolarWinds Platform Installer independent packages are used to install, upgrade, or remove SQL Sentry Clients and SQL Sentry Monitoring Services from machines where an Agent is installed.

Getting Started

Warning: The account(s) used for the Central Service and any installed agent(s) must be **Administrator** accounts.

Run as Administrator

Command Prompt must use the **Run as administrator** option for all commands.



Case-Sensitivity

The parameters used in commands are case-sensitive.

This means that **--agentname** will not work for **--agentName**.

Parameters & Examples

The instructions include commands with placeholders for parameters specific to your SQL Sentry environment. This section describes all of the placeholders used in the SolarWinds Platform Installer for SQL Sentry instructions.

For example, you will use the following command to install an agent:

```
swepi system install agent --username <username> --password <password> --agentName <agentName> --serviceURL <serviceURL>
```

When you run it with your parameter values, it might look like this:

```
swepi system install agent --username <JesseRemoteAgentUser> --password <MyPasswordHere> --agentName <localhostagent> --serviceURL <http://localhost>
```

Upgrading from another installation method

If you are upgrading from a previous installation type to the SolarWinds Platform Installer for SQL Sentry, see the [Upgrading](#) article.

Command Line Interface Commands

⚠ Important: All SolarWinds Platform Installer commands must be run by an **Administrator** through an **Administrator Command Prompt** window.

These instructions include commands with placeholders for parameters specific to your SQL Sentry environment. This section describes all of the placeholders used in the SQL Sentry Platform Installer instructions.

⚠ Warning: Command parameters that include a space in the parameter name must be enclosed by quotation marks " " to parse correctly. For example, in the command below, the optional parameter *Monitor Portal* is enclosed in quotation marks.

```
swepi agent enable --packageName sqlsentry --componentName "Monitor Portal" --agentName LHP85RemoteAgent
```

The following commands are available for the SQL Sentry Platform Installer Command Line Interface:

General Commands

Command	Description
Swepi help	Displays the available commands. ⓘ Note: Some commands may not be available if you are not connected to the central web service.

Command	Description
Swepi version	Displays the version of the installed Central web service.
Swepi connect --url <WebServiceUrl>	Connect to the central web service, used for routing commands.
Swepi agent help	Displays the list of all available commands for agents.
Swepi package help	Displays the list of all available commands for packages.
Swepi system help	Displays the list of all available commands for SolarWinds EPI system management.

Agent Commands

The following agent commands are available for the SQL Sentry Platform Installer Command Line Interface:

Agent Command	Description		
Swepi agent list	<p>Displays a list of all installed agents with their enabled components. The following parameters are configurable.</p> <p>Optional Parameters:</p> <hr/> <table border="1"> <tr> <td><code>--agentName</code></td> <td> <p>Include this parameter to list the status of only a single agent. For example:</p> <p>Swepi agent list --agentName <TestAgent></p> <p>Note: This parameter is optional.</p> </td> </tr> </table>	<code>--agentName</code>	<p>Include this parameter to list the status of only a single agent. For example:</p> <p>Swepi agent list --agentName <TestAgent></p> <p>Note: This parameter is optional.</p>
<code>--agentName</code>	<p>Include this parameter to list the status of only a single agent. For example:</p> <p>Swepi agent list --agentName <TestAgent></p> <p>Note: This parameter is optional.</p>		
Swepi agent help	Displays a list of all available commands for agents.		

Agent Command	Description										
<p>Swepi agent enable -- packageName <packageName> --componentName <componentName> --agentName <agentName></p>	<p>Enables an agent to run with a specific package. The following parameters are configurable.</p> <p>Required Parameters:</p> <table border="1" data-bbox="708 412 1406 842"> <tr> <td data-bbox="708 412 975 611">--packageName</td> <td data-bbox="975 412 1406 611"> Name of the package that the agent is enabling. ⚠ Important: This parameter is required. </td> </tr> <tr> <td data-bbox="708 611 975 842">--componentName</td> <td data-bbox="975 611 1406 842"> Name of the component in the package that the agent is enabling. ⚠ Important: This parameter is required. </td> </tr> </table> <p>Optional Parameters:</p> <table border="1" data-bbox="708 938 1406 1632"> <tr> <td data-bbox="708 938 975 1171">--agentName</td> <td data-bbox="975 938 1406 1171"> Name of the agent to enable the component with. Default to all agents. 📌 Note: This parameter is optional. </td> </tr> <tr> <td data-bbox="708 1171 975 1404">--username</td> <td data-bbox="975 1171 1406 1404"> The user name of the account that the agent will use to install services. 📌 Note: This parameter is optional. </td> </tr> <tr> <td data-bbox="708 1404 975 1632">--password</td> <td data-bbox="975 1404 1406 1632"> The password of the account that the agent will use to install services. 📌 Note: This parameter is optional. </td> </tr> </table>	--packageName	Name of the package that the agent is enabling. ⚠ Important: This parameter is required .	--componentName	Name of the component in the package that the agent is enabling. ⚠ Important: This parameter is required .	--agentName	Name of the agent to enable the component with. Default to all agents. 📌 Note: This parameter is optional .	--username	The user name of the account that the agent will use to install services. 📌 Note: This parameter is optional .	--password	The password of the account that the agent will use to install services. 📌 Note: This parameter is optional .
--packageName	Name of the package that the agent is enabling. ⚠ Important: This parameter is required .										
--componentName	Name of the component in the package that the agent is enabling. ⚠ Important: This parameter is required .										
--agentName	Name of the agent to enable the component with. Default to all agents. 📌 Note: This parameter is optional .										
--username	The user name of the account that the agent will use to install services. 📌 Note: This parameter is optional .										
--password	The password of the account that the agent will use to install services. 📌 Note: This parameter is optional .										

Agent Command	Description						
<p>Swepi agent disable --packageName <packageName> --componentName <componentName> --agentName <agentName></p>	<p>Disables an agent running with a specific package. The following parameters are configurable.</p> <p>Required Parameters:</p> <table border="1" data-bbox="707 412 1406 842"> <tr> <td data-bbox="707 412 970 611">--packageName</td> <td data-bbox="970 412 1406 611"> Name of the package that the agent is disabling. ⚠ Important: This parameter is required. </td> </tr> <tr> <td data-bbox="707 611 970 842">--componentName</td> <td data-bbox="970 611 1406 842"> Name of the component in the package that the agent is disabling. ⚠ Important: This parameter is required. </td> </tr> </table> <p>Optional Parameters:</p> <table border="1" data-bbox="707 938 1406 1187"> <tr> <td data-bbox="707 938 970 1187">--agentName</td> <td data-bbox="970 938 1406 1187"> Name of the agent running the component to disable. Defaults to all agents enabled with this component. This parameter is optional. </td> </tr> </table>	--packageName	Name of the package that the agent is disabling. ⚠ Important: This parameter is required .	--componentName	Name of the component in the package that the agent is disabling. ⚠ Important: This parameter is required .	--agentName	Name of the agent running the component to disable. Defaults to all agents enabled with this component. This parameter is optional .
--packageName	Name of the package that the agent is disabling. ⚠ Important: This parameter is required .						
--componentName	Name of the component in the package that the agent is disabling. ⚠ Important: This parameter is required .						
--agentName	Name of the agent running the component to disable. Defaults to all agents enabled with this component. This parameter is optional .						

Agent Command	Description	
<p>swepi agent update credentials</p>	<p>Updates the credential set that an agent uses to install a given service. If you don't include a username or password this command defaults to the agent using it's own credential set to install services.</p>	
	<p>The following parameters are configurable.</p>	
	<p>Required Parameters:</p>	
	<p>--packageName</p>	<p>Name of the package that the agent is enabled with.</p> <p>⚠ Important: This parameter is required.</p>
	<p>-- componentName</p>	<p>Name of the component in the package that the agent is enabled with.</p> <p>⚠ Important: This parameter is required.</p>
	<p>Optional Parameters:</p>	
	<p>--agentName</p>	<p>Name of the agent enabled with the component whose credentials are being updated. Defaults to all agents enabled with this component.</p> <p>This parameter is optional.</p>
<p>--username</p>	<p>Username of the account the agent will use to install services.</p> <p>This parameter is optional.</p>	
<p>--password</p>	<p>Password of the account the agent will use to install services.</p> <p>This parameter is optional.</p>	

Package Commands

The following agent commands are available for the SQL Sentry Platform Installer Command Line Interface:

Command	Description				
swepi package list	Displays a list of all configured packages.				
swepi package help	Displays a list of all available commands for packages.				
swepi package add --packageFilePath <packageFilePath>	<p>Adds a package to the Central Web Service. The following parameters are configurable.</p> <p>Required Parameters:</p> <hr/> <table border="1" data-bbox="703 577 1406 779"> <tr> <td data-bbox="703 577 963 779"> --packageFilePath </td> <td data-bbox="967 577 1406 779"> The file path to the downloaded package that's being added. ⚠ Important: This parameter is required. </td> </tr> </table>	--packageFilePath	The file path to the downloaded package that's being added. ⚠ Important: This parameter is required.		
--packageFilePath	The file path to the downloaded package that's being added. ⚠ Important: This parameter is required.				
swepi package remove --packageName <packageName> --version <version>	<p>Removes a package from the Central Web Service. The following parameters are configurable.</p> <p>Required Parameters:</p> <hr/> <table border="1" data-bbox="703 1008 1406 1406"> <tr> <td data-bbox="703 1008 963 1209"> --packageName </td> <td data-bbox="967 1008 1406 1209"> The name of the package that you want to remove. ⚠ Important: This parameter is required. </td> </tr> <tr> <td data-bbox="703 1214 963 1406"> --version </td> <td data-bbox="967 1214 1406 1406"> The version of the package that you want to remove. ⚠ Important: This parameter is required. </td> </tr> </table>	--packageName	The name of the package that you want to remove. ⚠ Important: This parameter is required.	--version	The version of the package that you want to remove. ⚠ Important: This parameter is required.
--packageName	The name of the package that you want to remove. ⚠ Important: This parameter is required.				
--version	The version of the package that you want to remove. ⚠ Important: This parameter is required.				
swepi package upgrade --packageName <packageName>	<p>Upgrades a package to the specified version. The following parameters are configurable.</p> <p>Required Parameters:</p> <hr/> <table border="1" data-bbox="703 1697 1406 1910"> <tr> <td data-bbox="703 1697 963 1910"> --packageName </td> <td data-bbox="967 1697 1406 1910"> The name of the package that you want to upgrade. ⚠ Important: This parameter is required. </td> </tr> </table>	--packageName	The name of the package that you want to upgrade. ⚠ Important: This parameter is required.		
--packageName	The name of the package that you want to upgrade. ⚠ Important: This parameter is required.				

Command	Description								
<p>swepi package config list --packageName <packageName></p>	<p>Displays a list of available configurations for a package. The following parameters are configurable.</p> <p>Required Parameters:</p> <table border="1" data-bbox="703 414 1406 616"> <tr> <td data-bbox="703 414 962 616">--packageName</td> <td data-bbox="965 414 1406 616"> <p>The name of the package that you want to configure.</p> <p>⚠ Important: This parameter is required.</p> </td> </tr> </table>	--packageName	<p>The name of the package that you want to configure.</p> <p>⚠ Important: This parameter is required.</p>						
--packageName	<p>The name of the package that you want to configure.</p> <p>⚠ Important: This parameter is required.</p>								
<p>swepi package config --packageName <packageName> --key <key> --value <value></p>	<p>Configures the required package values. The following parameters are configurable.</p> <p>Required Parameters:</p> <table border="1" data-bbox="703 844 1406 1444"> <tr> <td data-bbox="703 844 962 1046">--packageName</td> <td data-bbox="965 844 1406 1046"> <p>The name of the package that you want to configure.</p> <p>⚠ Important: This parameter is required.</p> </td> </tr> <tr> <td data-bbox="703 1050 962 1252">--key</td> <td data-bbox="965 1050 1406 1252"> <p>The key that you want to configure.</p> <p>⚠ Important: This parameter is required.</p> </td> </tr> <tr> <td data-bbox="703 1256 962 1444">--value</td> <td data-bbox="965 1256 1406 1444"> <p>The value that you want to configure.</p> <p>⚠ Important: This parameter is required.</p> </td> </tr> </table> <p>Optional Parameters:</p> <table border="1" data-bbox="703 1570 1406 1834"> <tr> <td data-bbox="703 1570 962 1834">--pushUpdated Config</td> <td data-bbox="965 1570 1406 1834"> <p>Include this parameter with the argument y to automatically push the updated config to installed services in this package.</p> <p>This parameter is optional.</p> </td> </tr> </table>	--packageName	<p>The name of the package that you want to configure.</p> <p>⚠ Important: This parameter is required.</p>	--key	<p>The key that you want to configure.</p> <p>⚠ Important: This parameter is required.</p>	--value	<p>The value that you want to configure.</p> <p>⚠ Important: This parameter is required.</p>	--pushUpdated Config	<p>Include this parameter with the argument y to automatically push the updated config to installed services in this package.</p> <p>This parameter is optional.</p>
--packageName	<p>The name of the package that you want to configure.</p> <p>⚠ Important: This parameter is required.</p>								
--key	<p>The key that you want to configure.</p> <p>⚠ Important: This parameter is required.</p>								
--value	<p>The value that you want to configure.</p> <p>⚠ Important: This parameter is required.</p>								
--pushUpdated Config	<p>Include this parameter with the argument y to automatically push the updated config to installed services in this package.</p> <p>This parameter is optional.</p>								

Command	Description				
<pre>swapi package push config -- packageName <packageName> -- agentName <agentName></pre>	<p>Pushes config values from the central service to agents running services in the package. The following parameters are configurable.</p> <p>Required Parameters:</p> <hr/> <table border="1" data-bbox="700 443 1406 645"> <tr> <td data-bbox="700 443 975 645">--packageName</td> <td data-bbox="978 443 1406 645"> Name of the configured package. ⚠ Important: This parameter is required. </td> </tr> </table> <p>Optional Parameters:</p> <hr/> <table border="1" data-bbox="700 741 1406 1066"> <tr> <td data-bbox="700 741 975 1066">--agentName</td> <td data-bbox="978 741 1406 1066"> Include this parameter to specify a single agent to receive the config data. The default behavior pushes the config to all agents without this parameter. 📌 Note: This parameter is optional. </td> </tr> </table>	--packageName	Name of the configured package. ⚠ Important: This parameter is required .	--agentName	Include this parameter to specify a single agent to receive the config data. The default behavior pushes the config to all agents without this parameter. 📌 Note: This parameter is optional .
--packageName	Name of the configured package. ⚠ Important: This parameter is required .				
--agentName	Include this parameter to specify a single agent to receive the config data. The default behavior pushes the config to all agents without this parameter. 📌 Note: This parameter is optional .				

Command	Description								
<p>swapi package initialize --packageName <packageName></p>	<p>Initializes the database components of a package. The following parameters are configurable.</p> <p>Required Parameters:</p> <table border="1" data-bbox="703 414 1406 629"> <tr> <td data-bbox="703 414 978 629">--packageName</td> <td data-bbox="981 414 1406 629"> The name of the package that you want to initialize. ⚠ Important: This parameter is required. </td> </tr> </table> <p>Optional Parameters:</p> <table border="1" data-bbox="703 728 1406 952"> <tr> <td data-bbox="703 728 978 952">--componentName</td> <td data-bbox="981 728 1406 952"> The name of the component in the package you want to initialize. 📌 Note: This parameter is optional. </td> </tr> </table>	--packageName	The name of the package that you want to initialize. ⚠ Important: This parameter is required .	--componentName	The name of the component in the package you want to initialize. 📌 Note: This parameter is optional .				
--packageName	The name of the package that you want to initialize. ⚠ Important: This parameter is required .								
--componentName	The name of the component in the package you want to initialize. 📌 Note: This parameter is optional .								
	<p>Command for explicitly configuring a connection string with a package. The following parameters are configurable.</p> <p>Required Parameters:</p> <table border="1" data-bbox="703 1254 1406 2056"> <tr> <td data-bbox="703 1254 978 1478">--packageName</td> <td data-bbox="981 1254 1406 1478"> The name of the package that you want to configure with the connection string. ⚠ Important: This parameter is required. </td> </tr> <tr> <td data-bbox="703 1482 978 1706">--dataSource</td> <td data-bbox="981 1482 1406 1706"> The name or network address of the instance of SQL Server with which to connect. ⚠ Important: This parameter is required. </td> </tr> <tr> <td data-bbox="703 1711 978 1881">--initialCatalog</td> <td data-bbox="981 1711 1406 1881"> The name of the database. ⚠ Important: This parameter is required. </td> </tr> <tr> <td data-bbox="703 1886 978 2056">--userID</td> <td data-bbox="981 1886 1406 2056"> The SQL Server login account. ⚠ Important: This parameter is required. </td> </tr> </table>	--packageName	The name of the package that you want to configure with the connection string. ⚠ Important: This parameter is required .	--dataSource	The name or network address of the instance of SQL Server with which to connect. ⚠ Important: This parameter is required .	--initialCatalog	The name of the database. ⚠ Important: This parameter is required .	--userID	The SQL Server login account. ⚠ Important: This parameter is required .
--packageName	The name of the package that you want to configure with the connection string. ⚠ Important: This parameter is required .								
--dataSource	The name or network address of the instance of SQL Server with which to connect. ⚠ Important: This parameter is required .								
--initialCatalog	The name of the database. ⚠ Important: This parameter is required .								
--userID	The SQL Server login account. ⚠ Important: This parameter is required .								

Command	Optional Parameters: Description	
<pre> swepi package config ConnectionString --packageName <packageName> --dataSource <dataSource> --initialCatalog <initialCatalog> --userID <userID> -- password <password> -- integratedAuth <integratedAuth> -- pushUpdatedConfig <pushUpdatedConfig> </pre>	<pre>--password</pre>	<p>Password of the account specified by User ID. If IntegratedAuth is not requested and the password is not provided, the user will be prompted to enter a password and password input will be hidden for security.</p> <p>Note: This parameter is optional.</p>
	<pre>--integratedAuth</pre>	<p>If you would like to use integrated auth (windows authentication), provide the value 'y' with this parameter. If IntegratedAuth is not requested, a password will need to be provided.</p> <p>Note: This parameter is optional.</p>
	<pre>-- pushUpdatedConfig</pre>	<p>Include this parameter with the argument <i>y</i> to automatically push the updated config to installed services in this package.</p> <p>Note: This parameter is optional.</p>

System Commands

Command	Description
<pre>swepi system list</pre>	<p>Displays a list of all the SolarWinds Platform Installer installables that are currently on the Central Service.</p>
<pre>swepi system help</pre>	<p>Displays a list of all the available command for the SolarWinds Platform Installer system management.</p>

Command	Description		
<pre>swapi system add -- componentFilePath <componentFilePath></pre>	<p>Adds a system component to the Central Service. The following parameters are configurable.</p> <p>Required Parameters:</p> <hr/> <table border="1" data-bbox="703 443 1406 808"><tr><td data-bbox="703 443 1010 808">--componentFilePath</td><td data-bbox="1010 443 1406 808">The filepath to the locally downloaded system component (the msi file) being added for upgrading. ⚠ Important: This parameter is required.</td></tr></table>	--componentFilePath	The filepath to the locally downloaded system component (the msi file) being added for upgrading. ⚠ Important: This parameter is required .
--componentFilePath	The filepath to the locally downloaded system component (the msi file) being added for upgrading. ⚠ Important: This parameter is required .		

Command	Description								
<pre>swepi system install agent -- username <username> --password <password> --agentName <agentName> --serviceURL <serviceURL></pre>	<p>Installs a SolarWinds Platform Installer agent on your local machine. The following parameters are configurable.</p> <p>Required Parameters:</p> <table border="1" data-bbox="703 443 1406 902"> <tr> <td data-bbox="703 443 1015 674">--username</td> <td data-bbox="1015 443 1406 674"> Username of the account under which to install the agent. ⚠ Important: This parameter is required. </td> </tr> <tr> <td data-bbox="703 674 1015 902">--password</td> <td data-bbox="1015 674 1406 902"> Password of the account under which to install the agent. ⚠ Important: This parameter is required. </td> </tr> </table> <p>Optional Parameters:</p> <table border="1" data-bbox="703 1032 1406 1559"> <tr> <td data-bbox="703 1032 1015 1263">--agentName</td> <td data-bbox="1015 1032 1406 1263"> Name that the agent will be referenced by. Defaults to machine name. 📌 Note: This parameter is optional. </td> </tr> <tr> <td data-bbox="703 1263 1015 1559">--serviceURL</td> <td data-bbox="1015 1263 1406 1559"> Address of the central web service that the agent will communicate with. Defaults to service the CLI is currently connected to. 📌 Note: This parameter is optional. </td> </tr> </table>	--username	Username of the account under which to install the agent. ⚠ Important: This parameter is required .	--password	Password of the account under which to install the agent. ⚠ Important: This parameter is required .	--agentName	Name that the agent will be referenced by. Defaults to machine name. 📌 Note: This parameter is optional .	--serviceURL	Address of the central web service that the agent will communicate with. Defaults to service the CLI is currently connected to. 📌 Note: This parameter is optional .
--username	Username of the account under which to install the agent. ⚠ Important: This parameter is required .								
--password	Password of the account under which to install the agent. ⚠ Important: This parameter is required .								
--agentName	Name that the agent will be referenced by. Defaults to machine name. 📌 Note: This parameter is optional .								
--serviceURL	Address of the central web service that the agent will communicate with. Defaults to service the CLI is currently connected to. 📌 Note: This parameter is optional .								

Command	Description		
<p>swepi system install launchpad</p>	<p>Installs the client launchpad on your local machine, or the machine you specify with the --serviceURL parameter. The following parameters are configurable.</p> <p>Optional Parameters:</p> <hr/> <table border="1" data-bbox="703 443 1406 801"> <tr> <td data-bbox="703 443 1018 801">--serviceURL</td> <td data-bbox="1018 443 1406 801"> <p>The address of the Central Service that the agent will communicate with. Defaults to the service that's currently connected to the command line interface.</p> <p>Note: This parameter is optional.</p> </td> </tr> </table>	--serviceURL	<p>The address of the Central Service that the agent will communicate with. Defaults to the service that's currently connected to the command line interface.</p> <p>Note: This parameter is optional.</p>
--serviceURL	<p>The address of the Central Service that the agent will communicate with. Defaults to the service that's currently connected to the command line interface.</p> <p>Note: This parameter is optional.</p>		
<p>swepi system uninstall all agents</p>	<p>Uninstalls all agents that are connected to the Central Service.</p>		
<p>swepi system uninstall agent --agentName <agentName></p>	<p>Uninstall the specified agent from the machine. The following parameters are configurable.</p> <p>Required Parameters:</p> <hr/> <table border="1" data-bbox="703 1171 1406 1402"> <tr> <td data-bbox="703 1171 1018 1402">--agentName</td> <td data-bbox="1018 1171 1406 1402"> <p>Registered name of the agent that will be uninstalled.</p> <p>Important: This parameter is required.</p> </td> </tr> </table>	--agentName	<p>Registered name of the agent that will be uninstalled.</p> <p>Important: This parameter is required.</p>
--agentName	<p>Registered name of the agent that will be uninstalled.</p> <p>Important: This parameter is required.</p>		
<p>swepi system uninstall launchpad</p>	<p>Uninstalls the Client Launchpad from the machine where the command is executed.</p>		

Command	Description				
<pre>swepi system upgrade -- componentName <componentName> --targetName <targetName></pre>	<p>Initiates an upgrade of active SolarWinds Platform Installer systems to use the latest system component stored on the Central Service. The following parameters are configurable.</p> <p>Required Parameters:</p> <hr/> <table border="1" data-bbox="703 443 1406 770"> <tr> <td data-bbox="703 443 1027 770">--componentName</td> <td data-bbox="1027 443 1406 770"> <p>The name of the SolarWinds Platform Installer system component to be upgraded (Agent or Client Launchpad).</p> <p>⚠ Important: This parameter is required.</p> </td> </tr> </table> <p>Optional Parameters:</p> <hr/> <table border="1" data-bbox="703 869 1406 1196"> <tr> <td data-bbox="703 869 1027 1196">--targetName</td> <td data-bbox="1027 869 1406 1196"> <p>The name of a specific target system component, if not present all system components of the same type will be sent an upgrade message.</p> <p>📌 Note: This parameter is optional.</p> </td> </tr> </table>	--componentName	<p>The name of the SolarWinds Platform Installer system component to be upgraded (Agent or Client Launchpad).</p> <p>⚠ Important: This parameter is required.</p>	--targetName	<p>The name of a specific target system component, if not present all system components of the same type will be sent an upgrade message.</p> <p>📌 Note: This parameter is optional.</p>
--componentName	<p>The name of the SolarWinds Platform Installer system component to be upgraded (Agent or Client Launchpad).</p> <p>⚠ Important: This parameter is required.</p>				
--targetName	<p>The name of a specific target system component, if not present all system components of the same type will be sent an upgrade message.</p> <p>📌 Note: This parameter is optional.</p>				
<pre>swepi system user add --username <username></pre>	<p>Adds an authorized user account. 📌 Note: This command adds a user that can run SolarWinds Platform Installer Commands. This command does not add a user in SQL Sentry. The following parameters are configurable.</p> <p>Required Parameters:</p> <hr/> <table border="1" data-bbox="703 1518 1406 1720"> <tr> <td data-bbox="703 1518 1027 1720">--username</td> <td data-bbox="1027 1518 1406 1720"> <p>The username of the account.</p> <p>⚠ Important: This parameter is required.</p> </td> </tr> </table>	--username	<p>The username of the account.</p> <p>⚠ Important: This parameter is required.</p>		
--username	<p>The username of the account.</p> <p>⚠ Important: This parameter is required.</p>				

Command	Description		
<code>swepi system user remove --username <username></code>	<p>Removes an account from the list of authorized users. i</p> <p>Note: This command removes a user that can run SolarWinds Platform Installer Commands. This command does not remove a user in SQL Sentry. The following parameters are configurable.</p> <p>Required Parameters:</p> <hr/> <table border="1"> <tr> <td><code>--username</code></td> <td> <p>The username of the account.</p> <p>⚠ Important: This parameter is required.</p> </td> </tr> </table>	<code>--username</code>	<p>The username of the account.</p> <p>⚠ Important: This parameter is required.</p>
<code>--username</code>	<p>The username of the account.</p> <p>⚠ Important: This parameter is required.</p>		
<code>swepi system user list</code>	Displays a list of all the authorized users accounts.		


Summary of Installation

⚠ Warning: The account(s) used for the Central Service and any installed agent(s) must be **Administrator** accounts.


The SolarWinds Platform Installer for SQL Sentry helps users with large SQL Sentry Installations (multiple Monitoring Services and Clients across varying machines) install and upgrade their installations without going through a manual process to install or upgrade for each instance. Installing the SolarWinds Platform Installer on your environment should be completed in the following steps:


1. Install the Central Service and CLI on your central location.
2. Connect to the Central Service through the CLI and add your users.
3. Install and register Remote Agent(s) on your machines that will have a SQL Sentry Monitoring Service or SQL Sentry Portal.
4. Install the Launchpad on your machines that will have a SQL Sentry Client.
5. Download the SQL Sentry Installation package and add it to the Central Service.
6. Install the SQL Sentry Database on your desired machine(s) through the Command Line Interface.
7. Install the SQL Sentry Monitoring Service on your desired machine(s) through the Command Line Interface.
8. Install the SQL Sentry Client on your desired machine(s) through the Launchpad.
9. Establish your SQL Sentry Client connection(s).

Initial Installation

 **Additional Information:** Before installing the SolarWinds Platform Installer for SQL Sentry on your installation(s), take a look at the [Installation recommendations](#) and make sure your machine(s) meets the System Requirements.

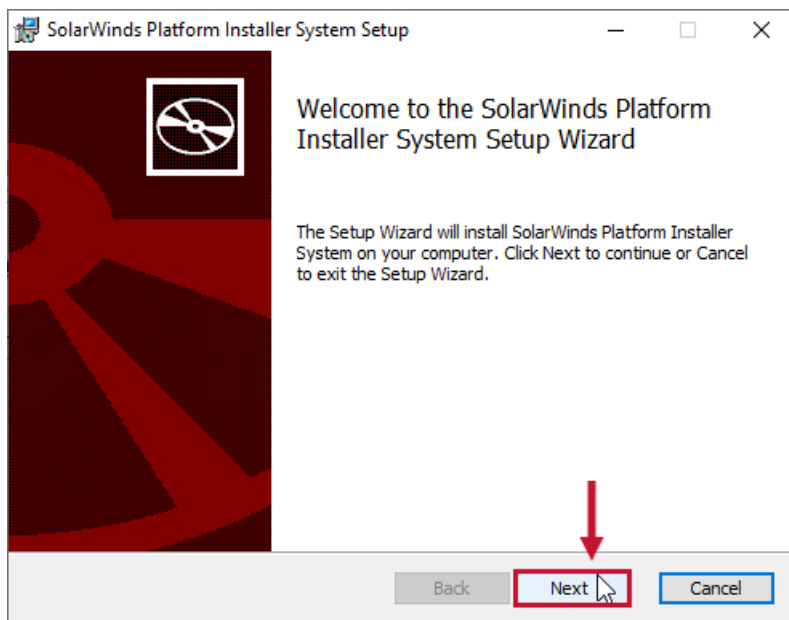
Installing the CLI and Central Service

 **Warning:** You need an **Admin account** on your system to execute the SolarWinds Platform Installer System Setup. **An Admin account** is required to run the Command Line Interface and interact with the Central Service.

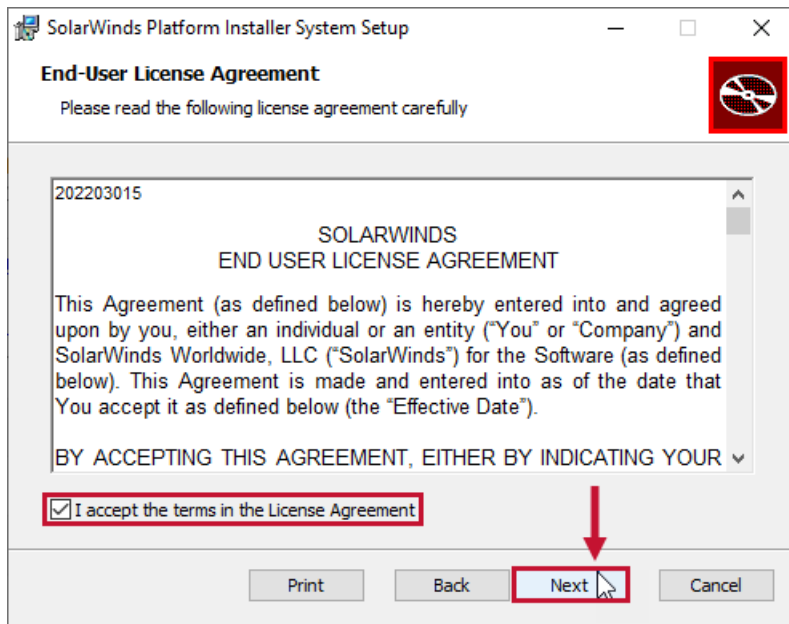
 **Important:** Executing the SolarWinds Platform Installer system setup will add your entered system admin account as an admin user in the SolarWinds Platform Installer Command Line Interface. An Admin in the SolarWinds Platform Installer Command Line Interface account allows users to issue commands to the Central Service. You can add additional users using the **swapi system user add --username <username>** command through the Command Line Interface.

The SolarWinds Platform Installer for SQL Sentry should be installed on the central location for your SQL Server environment. Install the SolarWinds Platform Installer for SQL Sentry by completing the following steps:

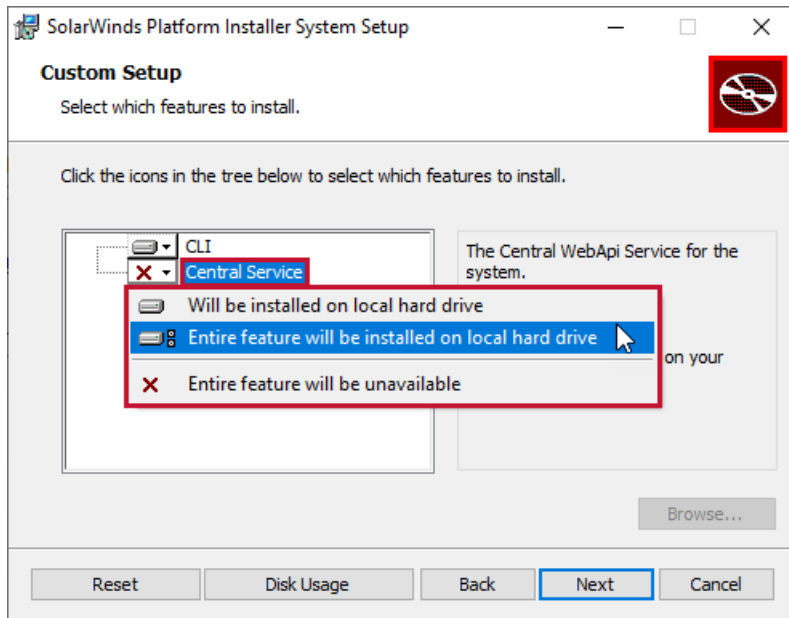
1. Download and execute the SolarWinds Platform Installer for SQL Sentry. Select **Next** to Continue.



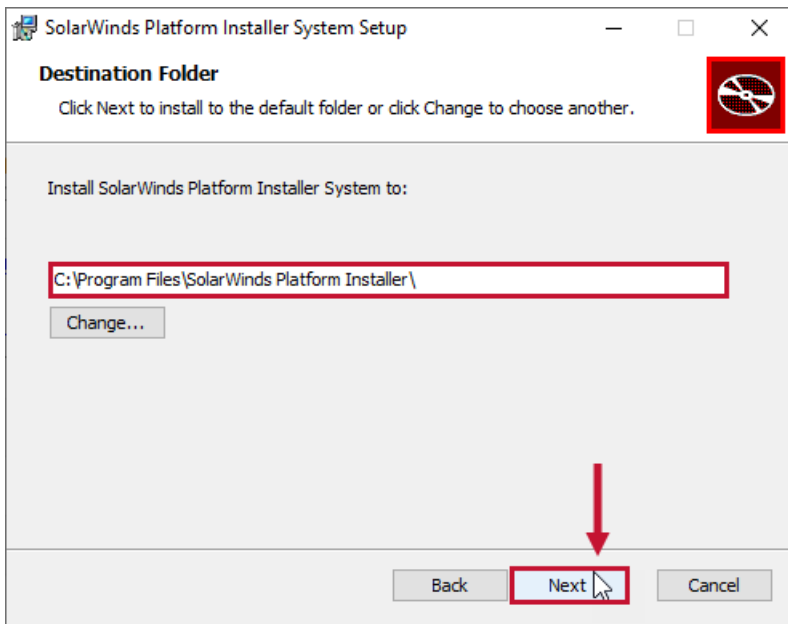
2. Select the checkbox to agree to the terms in the License Agreement, and then select **Next** to Continue.



3. Select how the Central Service will be installed, and then select **Next** to continue.

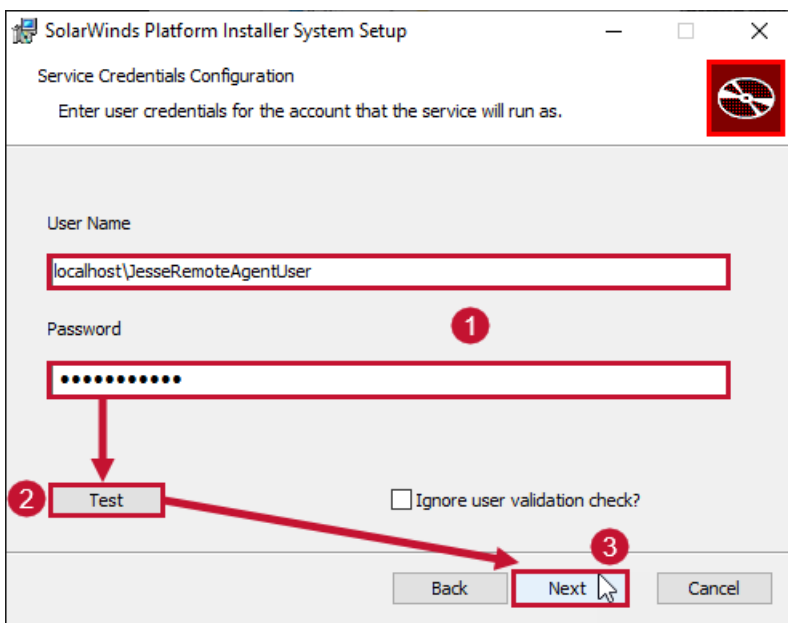


4. Review the installation location, and then select **Next** to continue.



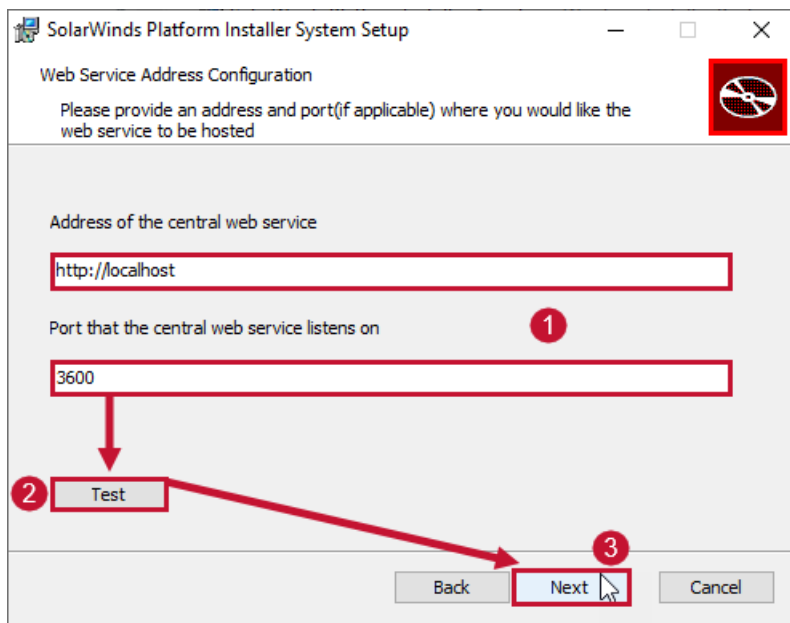
Note: Select **Change** to choose a different installation location.

5. Enter the username and password for the service account. Select **Test** to validate the user credentials. Select **Next** to continue.



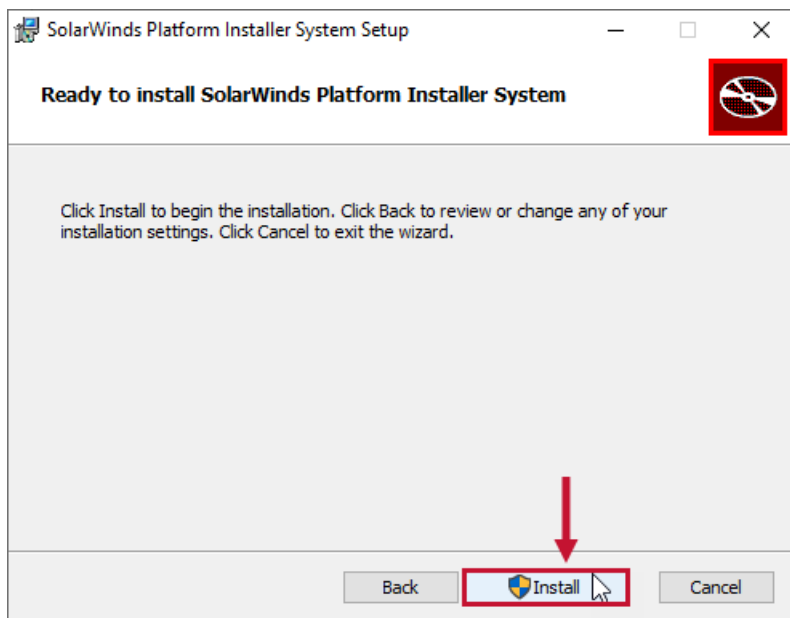
Important: The Account used to run the Central Service must be an **Administrator** account.

6. Enter the address and port that will host the Central Service. Select **Test** to validate the address and port. Select **Next** to continue. **Note:** The port is set to **80** by default. In this example, we are using port 3600, but you can enter the port of your choosing.

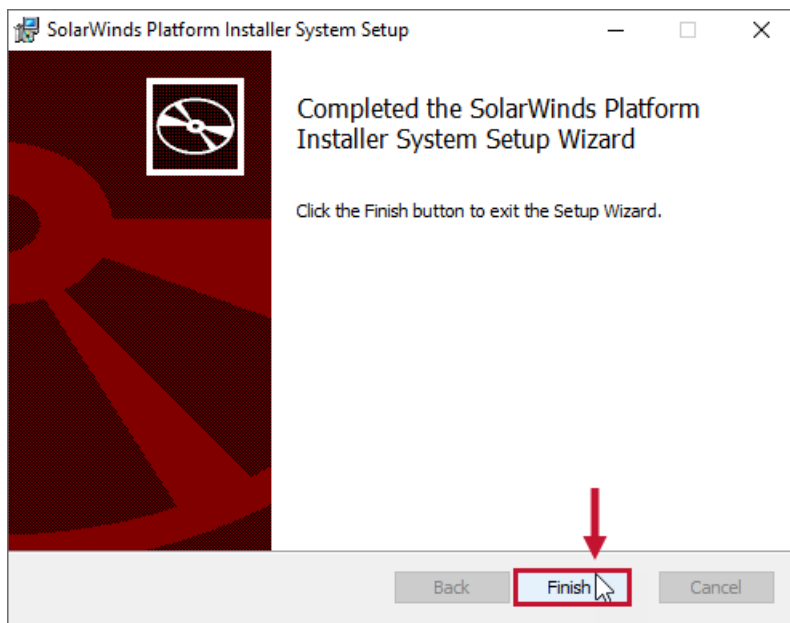


⚠ Warning: In the example above, we are connecting to localhost from the local machine. If you are setting up a SolarWinds Platform Installer for SQL Sentry Central Web Service that needs to be accessed from one or more remote machines in your network, **you must enter the server name or IP address of the server where the Central Web Service will run so that it will be accessible by all of the separate machines across your network** (for example, command line interfaces, agents, launchpads, and web browsers).

7. Select **Install** to begin the installation.



8. Select **Finish** to exit the setup wizard.



⚠ Important: You can use the **CTRL C** command to stop the Web API.

Connecting to the Central Service and Adding Users with the CLI

⚠ Important: During the setup for SolarWinds Platform Installer Central Service and CLI, you add a administrator user account that is used to run the Central Service. You must add additional users through the CLI while using this account.

After successfully installing the CLI and Central Service with the SolarWinds Platform Installer System Setup Wizard, you can connect to the Central Service using the command line interface (CLI), and add any users that will issue commands, interact with the Remote Agent, or interact with the Client Launchpad. Add your users through the CLI by completing the following steps:

1. Open an administrator Command prompt window and connect to the SolarWinds.Platform.Installer.CLI file location. **ⓘ Note:** The SolarWinds.Platform.Installer.CLI file location is **C:\Program Files\SolarWinds Platform Installer\CLI** by default.

```
swapi connect --url http://localhost:80
```

2. Add administrator accounts that will use the SolarWinds Platform Installer Central Service, Remote Agent, or Client Launchpad. Repeat this step as necessary.

```
swapi system user add --username <localhost\tom.swapiuser>
```

```
C:\Program Files\SolarWinds Platform Installer\Cli>swapi system user add --username INT\jesse.s
Version: 2023.2.0.39076
Commands being sent to http://localhost:80
Response Message: User: INT\jesse.s added.
Result Code: Success

C:\Program Files\SolarWinds Platform Installer\Cli>swapi system user list
Version: 2023.2.0.39076
Commands being sent to http://localhost:80
Response Message:
Result Code: Success

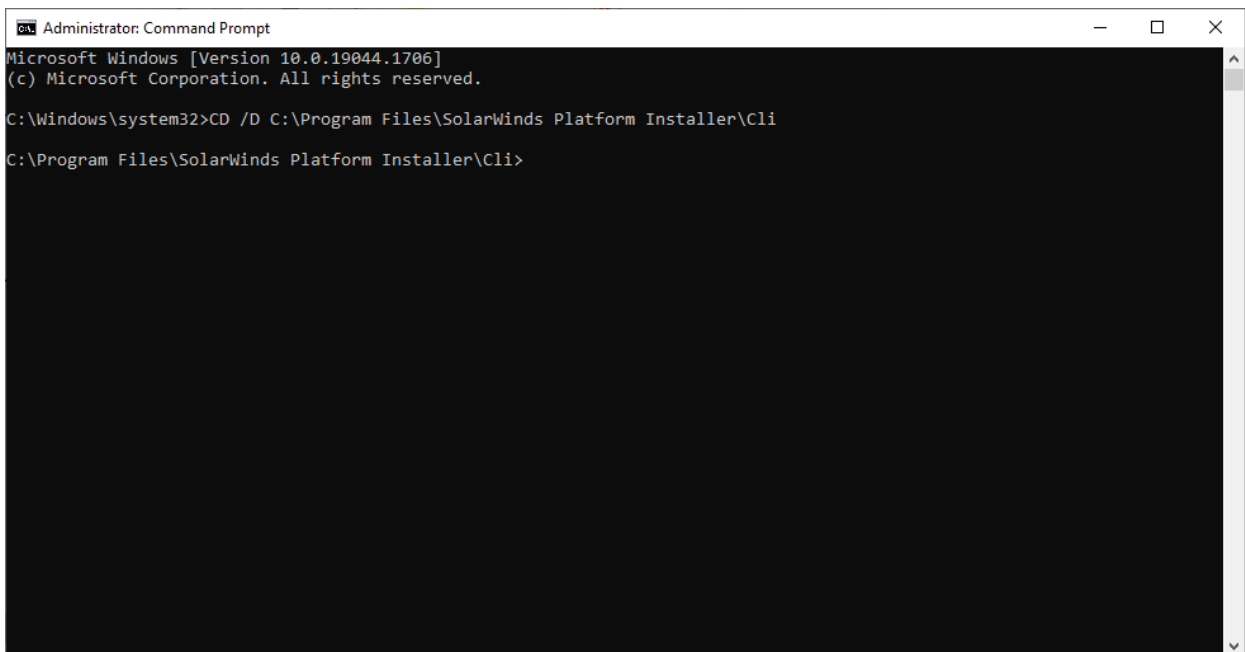
INT\jordan.s
INT\jesse.s
```

Installing the Remote Agent with the CLI

SolarWinds Platform Installer Agents should be installed on all machines that will receive SQL Sentry Monitoring Services and Clients. Install and register an Agent through the Command line interface:

1. Open an administrator Command prompt window and connect to the SolarWinds.Platform.Installer.CLI file location. **Note:** The SolarWinds.Platform.Installer.CLI file location is **C:\Program Files\SolarWinds Platform Installer\CLI** by default.

```
swapi connect --url http://localhost:3600
```



```
Administrator: Command Prompt
Microsoft Windows [Version 10.0.19044.1706]
(c) Microsoft Corporation. All rights reserved.

C:\Windows\system32>CD /D C:\Program Files\SolarWinds Platform Installer\Cli
C:\Program Files\SolarWinds Platform Installer\Cli>
```

2. Execute the swapi system install agent command to install the remote agent on your system:

```
swapi system install agent --username LHP85-0519-817B\JesseRemoteAgentUser --password Rocket231!! --agentName LHP85RemoteAgent --serviceURL http://localhost:3600
```



```
Administrator: Command Prompt
Microsoft Windows [Version 10.0.19044.1706]
(c) Microsoft Corporation. All rights reserved.

C:\Windows\system32>CD /D C:\Program Files\SolarWinds Platform Installer\Cli

C:\Program Files\SolarWinds Platform Installer\Cli>swapi system install agent --username LHP85-0519-817B\JesseRemoteAgentUser
--password Rocket231!! --agentName LHP85RemoteAgent --serviceURL http://localhost:3600
Version: 2022.3.0.34332
Commands being sent to http://localhost:3600
Response Message:
Result Code: AgentInstallationSuccess

Response data is null.
AgentInstallationSuccess

C:\Program Files\SolarWinds Platform Installer\Cli>
```

Warning: The account(s) used for the agent service must be **Administrator** accounts.

Success: You have installed the SolarWinds Platform Installer Remote Agent on your system.

Note: You can also install the Remote Agent through its Installer. See [Installing the Remote Agent with the installer](#) below for more information.

Installing the LaunchPad with the CLI

The SolarWinds Platform Installer Launchpad will be used to launch the SQL Sentry Client and Initiate upgrades in an easy to use UI format. Install the Launchpad on your system with the CLI:

1. Open an administrator Command prompt window and connect to the SolarWinds.Platform.Installer.CLI file location. **Note:** The SolarWinds.Platform.Installer.CLI file location is **C:\Program Files\SolarWinds Platform Installer\CLI** by default.

```
swapi connect --url http://localhost:3600
```

2. Execute the swapi install launchpad command:

```
swapi system install launchpad
```


```
Administrator: Command Prompt
Microsoft Windows [Version 10.0.19044.1706]
(c) Microsoft Corporation. All rights reserved.

C:\Windows\system32>CD /D C:\Program Files\SolarWinds Platform Installer\Cli

C:\Program Files\SolarWinds Platform Installer\Cli>swapi system install launchpad
Version: 2022.3.0.34332
Commands being sent to http://localhost:3600
Response Message:
Result Code: LaunchpadInstallationSuccess

Response data is null.
LaunchpadInstallationSuccess
```

 **Success:** You have installed the SolarWinds Platform Installer Launchpad on your system.

 **Note:** You can also install the Launchpad through its Installer. See [Installing the Launchpad with the installer](#) below for more information.

Installing SQL Sentry Components via Packages


Requirements

Before installing SQL Sentry, review the following articles:


- [Installation Recommendations](#)
- [System Requirements](#)
- [Components & Architecture](#)

Installation Packages

You can add SQL Sentry Installation and Upgrade packages to the SolarWinds Platform Installer Central Service, and then push installations and upgrades to Remote Agents or Launchpads across your environment. Get started with installation packages by completing the following steps:

 **Important:** The SentryOne Monitoring Service and SQL Sentry Portal can only be installed to machines that have a SolarWinds Platform Installer Remote Agent installed.

Starting with Versions 2022.4, the `--packageName` value will always start with **sqlsentry**.

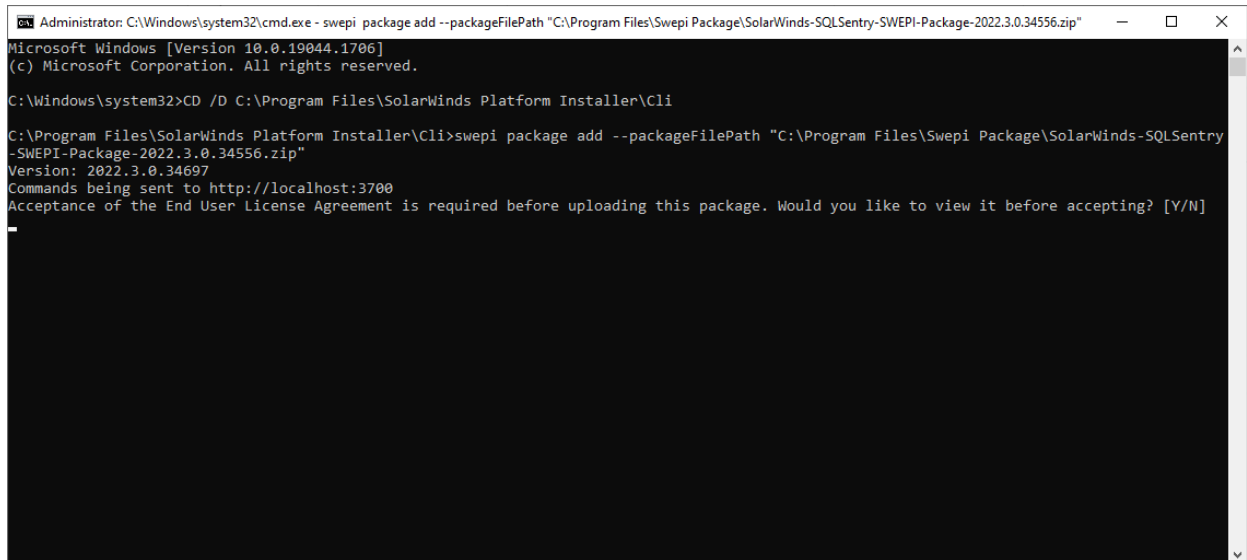
1. Download the SolarWinds Platform Installer Installation Package, and then place the Installation package in a location that is accessible by the Central Service.
2. Open an administrator Command prompt window and connect to the SolarWinds.Platform.Installer.CLI file location.  **Note:** The SolarWinds.Platform.Installer.CLI file location is **C:\Program Files\SolarWinds**

Platform Installer\CLI by default.

```
swepi connect --url http://localhost:3600
```

3. Add the installation package to the Central Service:

```
swepi package add --packageFilePath "C:\Program Files\Swepi Package\SolarWinds-SQLSentry-SWEPI-Package-2022.3.0.34556.zip"
```



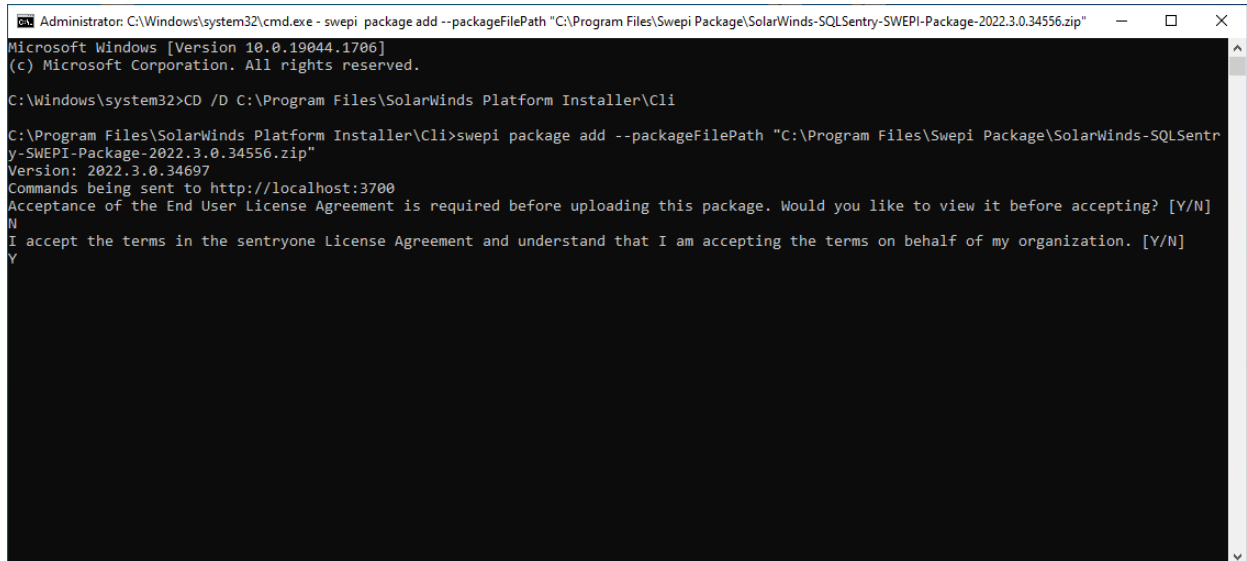
```
Administrator: C:\Windows\system32\cmd.exe - swepi package add --packageFilePath "C:\Program Files\Swepi Package\SolarWinds-SQLSentry-SWEPI-Package-2022.3.0.34556.zip"
Microsoft Windows [Version 10.0.19044.1706]
(c) Microsoft Corporation. All rights reserved.

C:\Windows\system32>CD /D C:\Program Files\SolarWinds Platform Installer\Cli

C:\Program Files\SolarWinds Platform Installer\Cli>swepi package add --packageFilePath "C:\Program Files\Swepi Package\SolarWinds-SQLSentry-SWEPI-Package-2022.3.0.34556.zip"
Version: 2022.3.0.34697
Commands being sent to http://localhost:3700
Acceptance of the End User License Agreement is required before uploading this package. Would you like to view it before accepting? [Y/N]

```

4. Accept the End User License Agreement to upload the package.



```
Administrator: C:\Windows\system32\cmd.exe - swepi package add --packageFilePath "C:\Program Files\Swepi Package\SolarWinds-SQLSentry-SWEPI-Package-2022.3.0.34556.zip"
Microsoft Windows [Version 10.0.19044.1706]
(c) Microsoft Corporation. All rights reserved.

C:\Windows\system32>CD /D C:\Program Files\SolarWinds Platform Installer\Cli

C:\Program Files\SolarWinds Platform Installer\Cli>swepi package add --packageFilePath "C:\Program Files\Swepi Package\SolarWinds-SQLSentry-SWEPI-Package-2022.3.0.34556.zip"
Version: 2022.3.0.34697
Commands being sent to http://localhost:3700
Acceptance of the End User License Agreement is required before uploading this package. Would you like to view it before accepting? [Y/N]
N
I accept the terms in the sentryone License Agreement and understand that I am accepting the terms on behalf of my organization. [Y/N]
Y

```

5. Verify the package has been uploaded to the Central Service:

```
swepi package list
```

```
Administrator: C:\Windows\system32\cmd.exe
C:\Program Files\SolarWinds Platform Installer\Cli>swepi package list
Version: 2022.3.0.34697
Commands being sent to http://localhost:3700
Response Message: Package List Command Received.
Result Code: PackageListCommandSuccess

Package Number: 1
=====
Package Name: sentryone
Package Versions: 2022.3.0.34556

Package Components:
=====
Package Component 1
Package Component Name: Client
=====
Package Component 2
Package Component Name: MonitoringService
=====
Package Component 3
Package Component Name: Database
=====
Package Component 4
Package Component Name: MyNetFx471Redist
=====
Package Component 5
Package Component Name: ReportViewerV10
=====
Package Component 6
Package Component Name: Monitor Portal
=====

PackageListCommandSuccess
C:\Program Files\SolarWinds Platform Installer\Cli>
```

6. Configure the connection string for the SentryOne Database:

```
swepi package config ConnectionString --packageName sqlsentry --dataSource localhost --initialCatalog SWEPI_DEMO_DB --userID LHP85-0519-817B\JesseRemoteAgentUser --integratedAuth y
```

7. Create the SentryOne Database on your machine:

```
swepi package initialize --packageName sqlsentry
```

⚠ Important: You can verify that the Database has been created in SSMS.

8. Instruct your Remote Agent to install the Monitoring Service:

```
swepi agent enable --packageName sqlsentry --componentName MonitoringService --agentName LHP85RemoteAgent
```

```
Administrator: C:\Windows\system32\cmd.exe
C:\Program Files\SolarWinds Platform Installer\Cli>swepi agent enable --packageName sentryone --componentName MonitoringService
Version: 2022.3.0.34697
Commands being sent to http://localhost:3700
Response Message:
Result Code: AgentEnableCommandSuccess

Response data is null.
AgentEnableCommandSuccess
C:\Program Files\SolarWinds Platform Installer\Cli>
```

You can verify that the Monitoring Service has been installed in System Services.

9. Instruct your Remote Agent to install the SQL Sentry Portal:

```
swepi agent enable --packageName sqlsentry --componentName "Monitor Portal" --agentName LHP85RemoteAgent
```

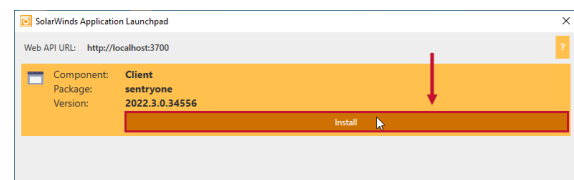
Warning: You can only configure your SQL Sentry Portal connection with the [Portal Configuration Utility](#). After installing the SQL Sentry Portal with the SolarWinds Platform installer for SQL Sentry, you can access the Portal Configuration Utility at the following location:

C:\Program Files\SolarWinds Platform Installer\Agent\sqlsentry_Monitor Portal_SentryOneMonitorPortal\pcu\SentryOne.Monitor.WebClient.ConfigurationUtility

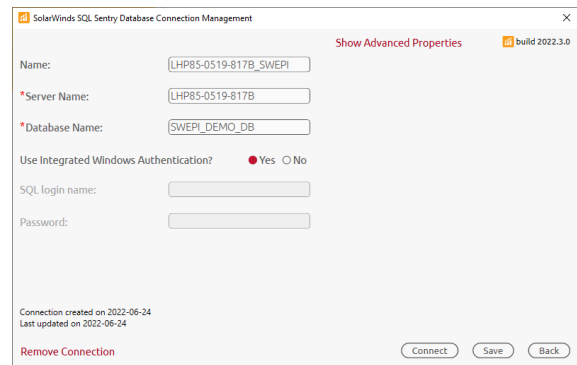
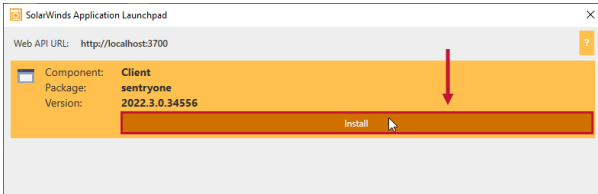
10. Open the Client Launchpad, and select **Install** to install the SQL Sentry Client on your machine.

```
Administrator: C:\Windows\system32\cmd.exe
C:\Program Files\SolarWinds Platform Installer\Cli>swepi agent enable --packageName sentryone --componentName MonitoringService
Version: 2022.3.0.34697
Commands being sent to http://localhost:3700
Response Message:
Result Code: AgentEnableCommandSuccess

Response data is null.
AgentEnableCommandSuccess
C:\Program Files\SolarWinds Platform Installer\Cli>cd C:\Program Files\SolarWinds Platform Installer\clientlaunchpad
C:\Program Files\SolarWinds Platform Installer\clientlaunchpad>SolarWinds.PlatformInstaller.ClientLaunchpad.ui.exe
```



11. Select **Start** to open the SQL Sentry Client, and then go through the onboarding wizard to [configure your connection](#).



Upgrade Packages

Get started with upgrade packages for your SolarWinds Platform Installer SQL Sentry Installation by completing the following steps:

⚠ Important: The SentryOne Monitoring Service and SQL Sentry Portal can only be installed to machines that have a SolarWinds Platform Installer Remote Agent installed.

Starting with Versions 2022.4, the `--packageName` value will always start with **sqlsentry**.

1. Download the SolarWinds Platform Installer Upgrade Package, and then place the Upgrade package in a location that is accessible by the Central Service.
2. Open an administrator Command prompt window and connect to the SolarWinds.Platform.Installer.CLI file location. **ⓘ Note:** The SolarWinds.Platform.Installer.CLI file location is **C:\Program Files\SolarWinds Platform Installer\CLI** by default.

```
swepi connect --url http://localhost:3600
```

3. Add the upgrade package to the Central Service:

```
swepi package add --packageFilePath "C:\Program Files\Downloads\SolarWinds-SQLSentry-SWEPI-Package-2023.1.3.zip"
```

4. Enter Y to accept the End User License Agreement to upload the package.
5. Verify the package has been uploaded to the Central Service:

```
swepi package list
```

6. Open all Client Launchpads before enabling the upgrade.
7. Enable the upgrade package for your installation:

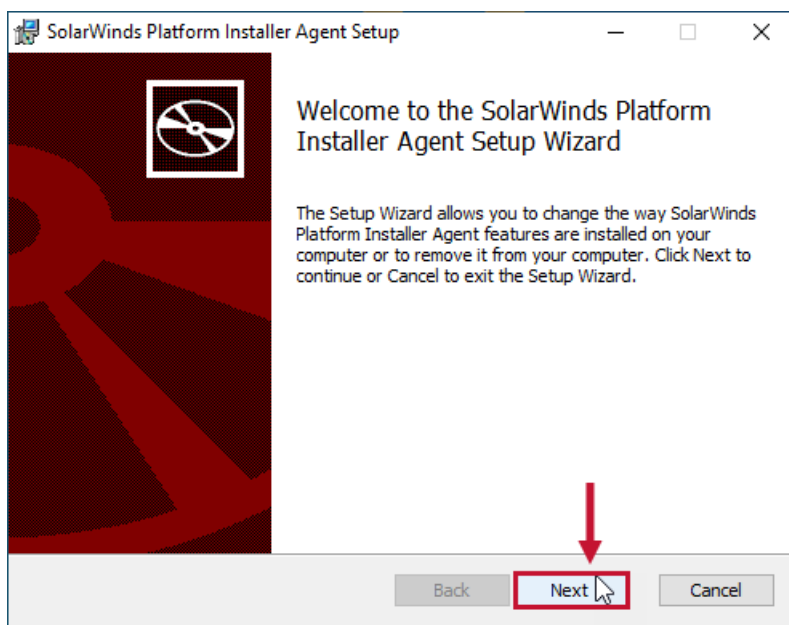
```
swapi package upgrade --packageName sqlsentry
```

Success: You have successfully enabled the upgrade package.

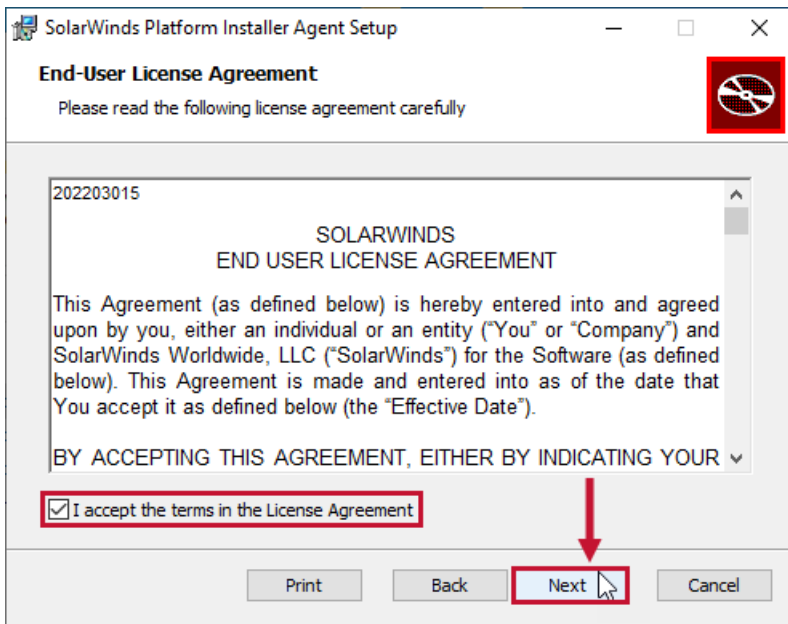
Installing the Remote Agent with the Installer

Important: You must download and install the SolarWinds Platform Installer Central Service on your central location before you can install the Remote Agent on your system.

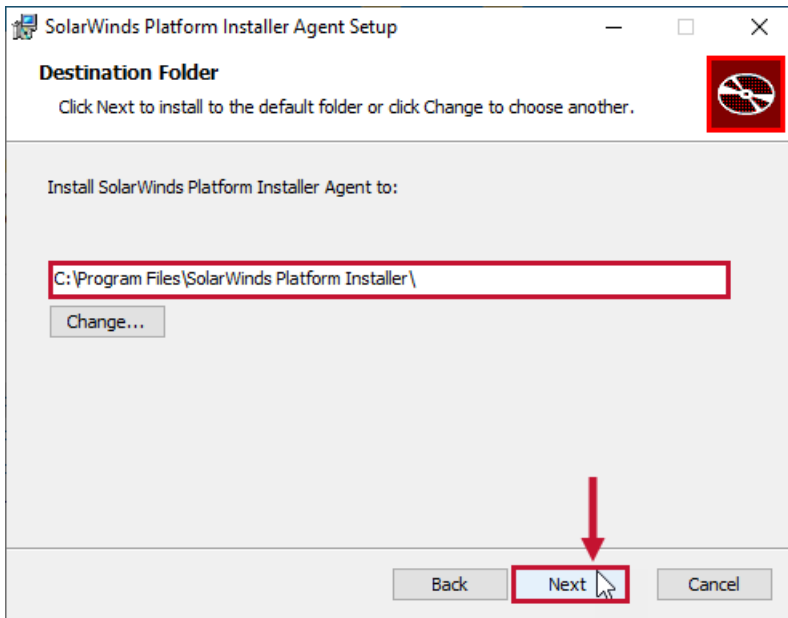
1. Execute the SolarWinds.PlatformInstaller.Agent.Setup file to begin your installation. Select **Next** to continue.



2. Select the checkbox to agree to the terms in the License Agreement, and then select **Next** to Continue.

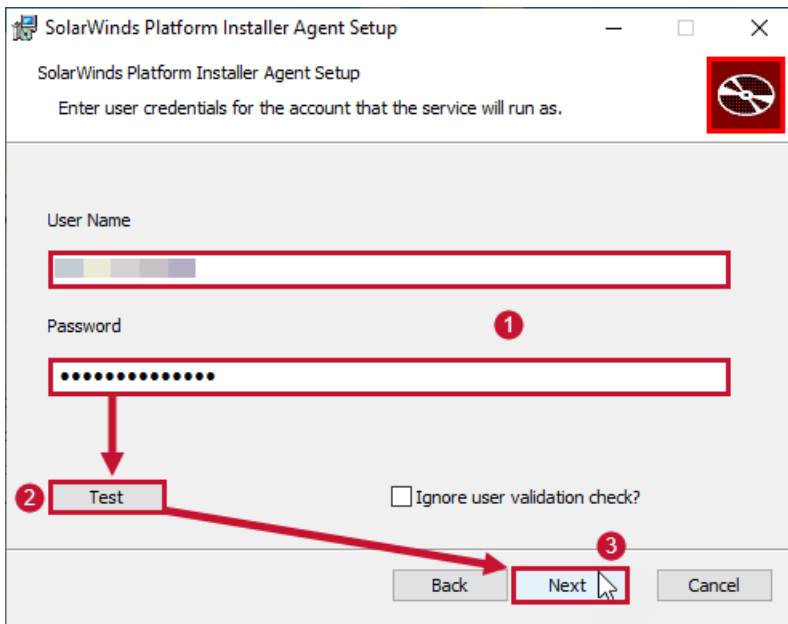


3. Review the installation location and select **Next** to continue.

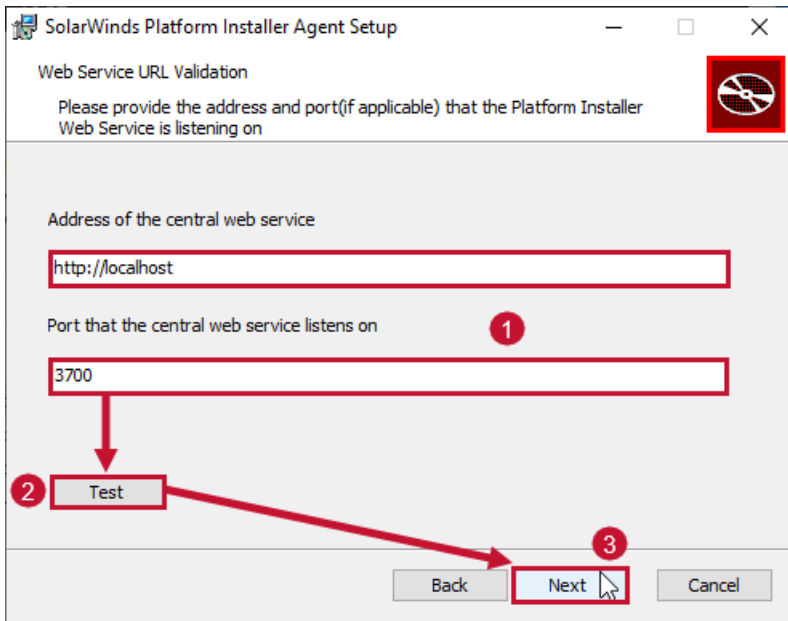


Note: Select **Change** to choose a different installation location.

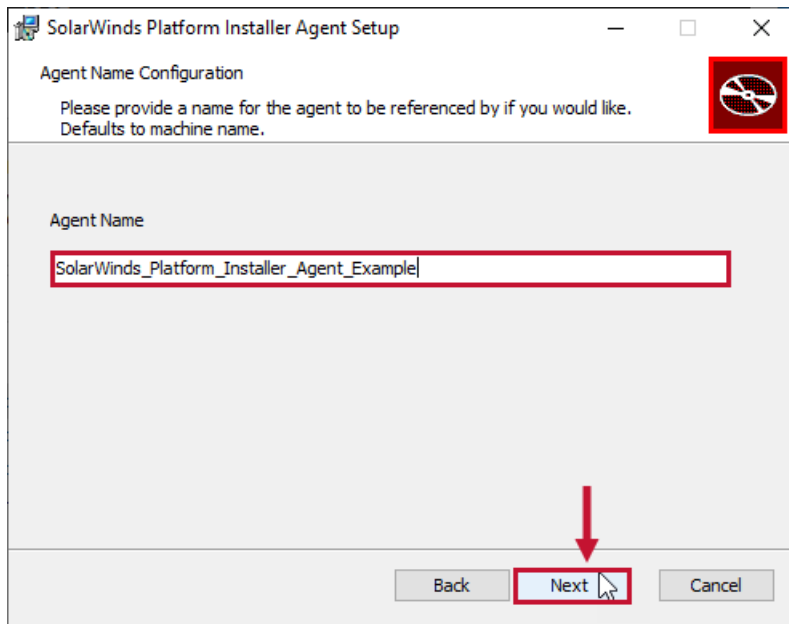
4. Enter the username and password for the service account. Select **Test** to validate the user credentials. Select **Next** to continue.



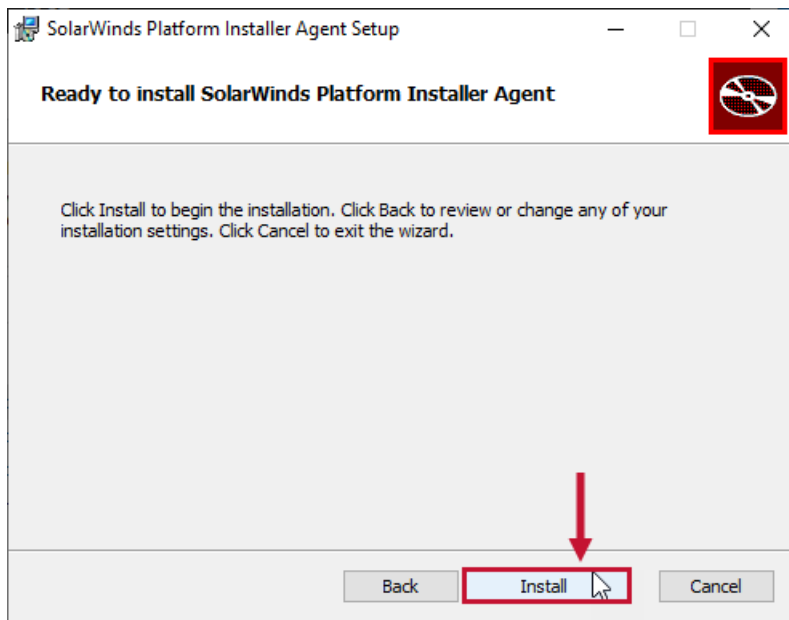
5. Enter the central web service address and port. Select Test to validate the connection. Select Next to continue.



6. Enter a name for the SolarWinds Platform Installer Remote Agent. Select Next to continue.



7. Select Install to begin the Remote Agent Installation.

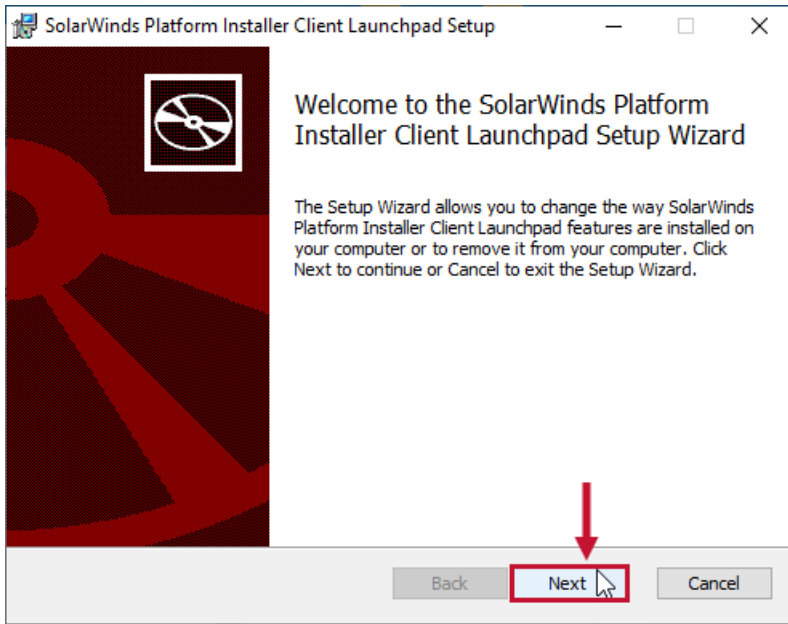


8. Select Finish to close the Agent Setup Wizard.

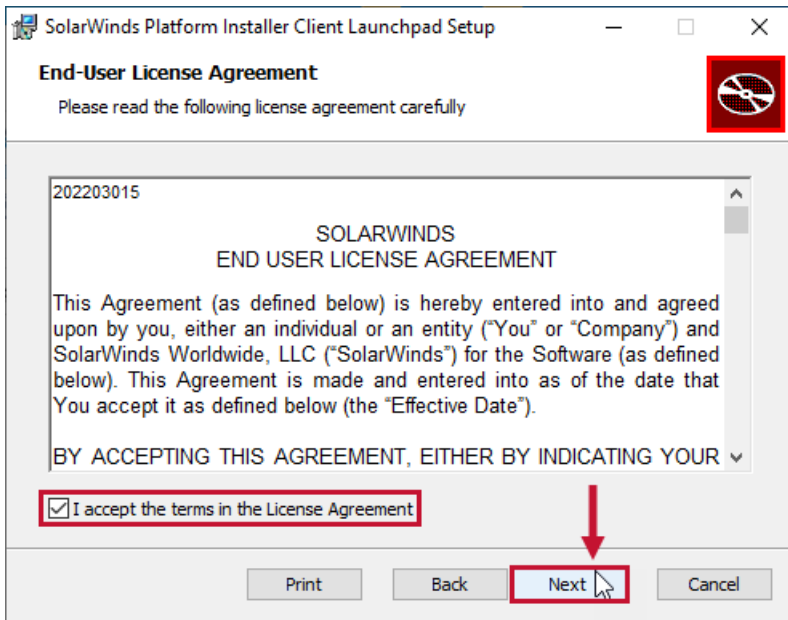
Installing the Launchpad with the Installer

⚠ Important: You must download and install the SolarWinds Platform Installer Central Service on your central location before you can install the Launchpad on your system.

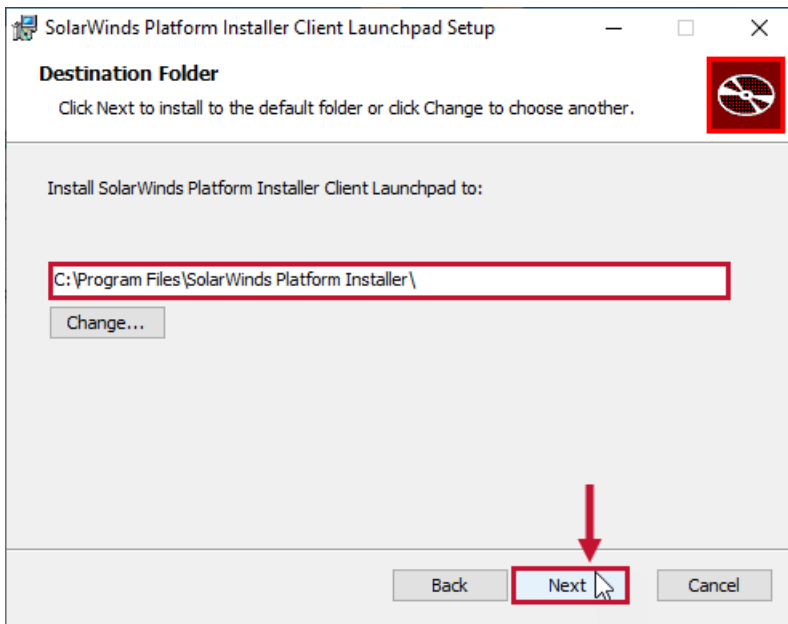
1. Execute the SolarWinds.PlatformInstaller.ClientLaunchpad.Setup file to begin your installation. Select Next to continue.



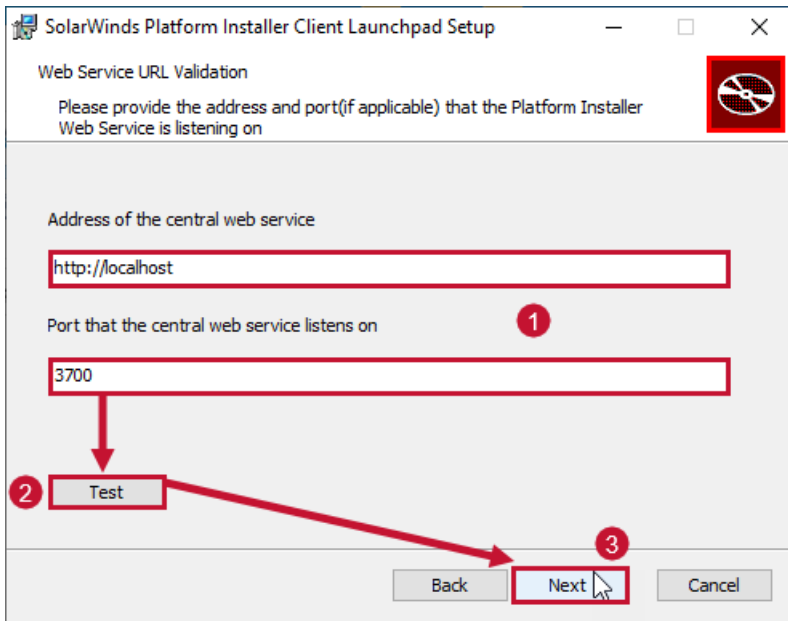
2. Select the checkbox to agree to the terms in the License Agreement, and then select Next to Continue.



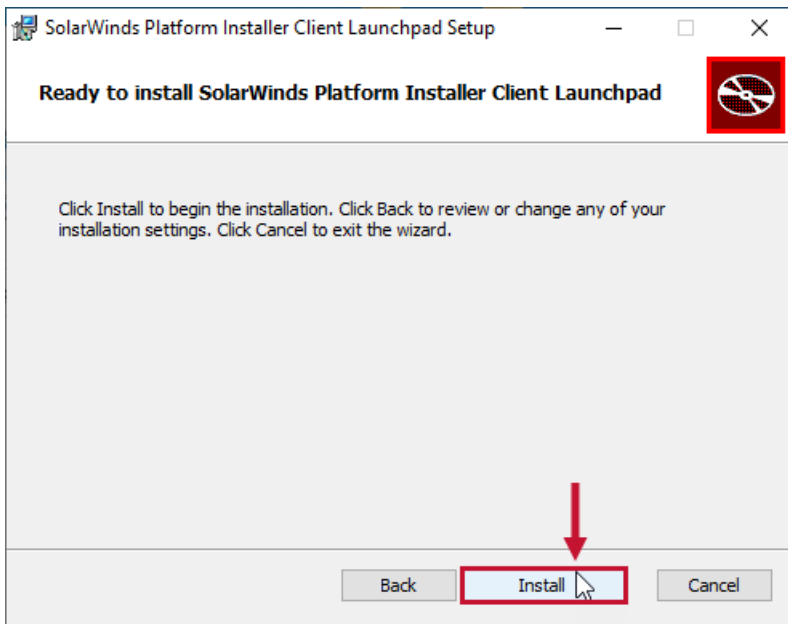
3. Review the installation location and select Next to continue.



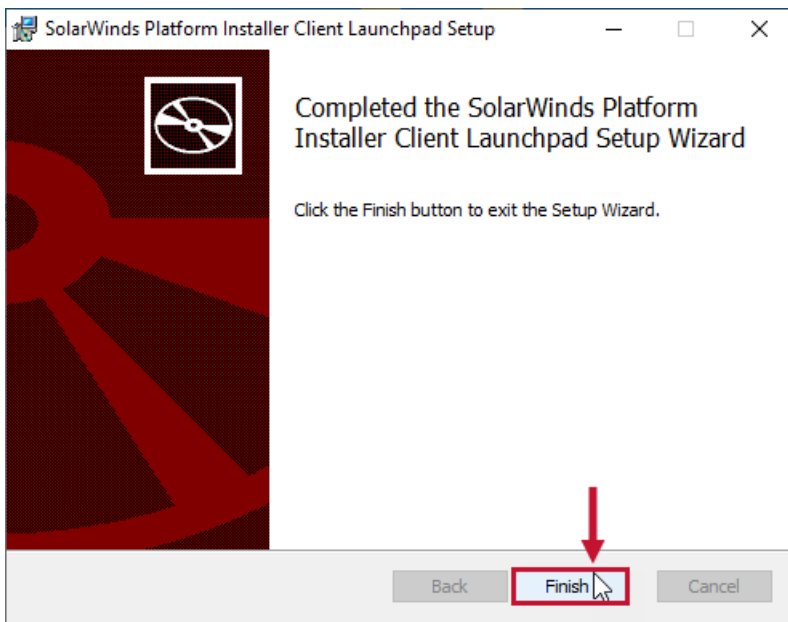
4. Enter the central web service address and port. Select Test to validate the connection. Select Next to continue.



5. Select Install to begin the Launchpad Installation.



6. Select **Finish** to close the Agent Setup Wizard.



Upgrading the Central Service

For information about upgrading the SolarWinds Platform Installer Central Service, see the [Upgrading article](#).
