

Adding the SQL Sentry Database to an Availability Group

Last Modified on 02 November 2022

In this article:

- [Registering your Listener Connection](#)
 - [EPI Installation](#)
 - [Unified Installation](#)
- [Configuring the Monitoring Services](#)
 - [Unified Installation](#)
 - [EPI Installation](#)
- [Activating Licenses](#)
 - [EPI Installation](#)
 - [Unified Installation](#)

To add an existing SQL Sentry Database to an Availability Group in your environment, complete the following steps:

Registering your Listener Connection

1. Complete the following for your installation type:

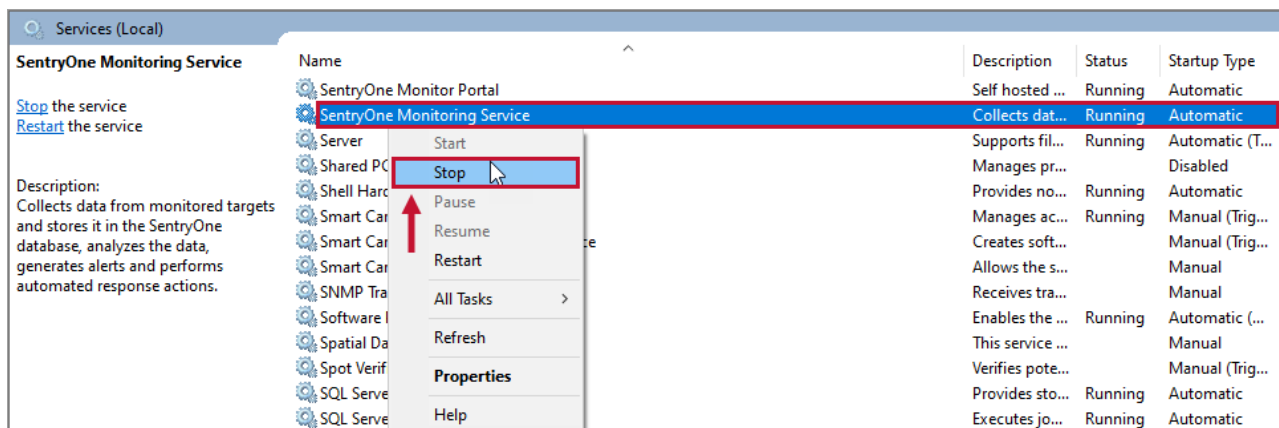
EPI Installation

1. Open Windows Powershell and use the `so stopms -n <connectionName> --all` command to stop all SentryOne Monitoring Service(s).

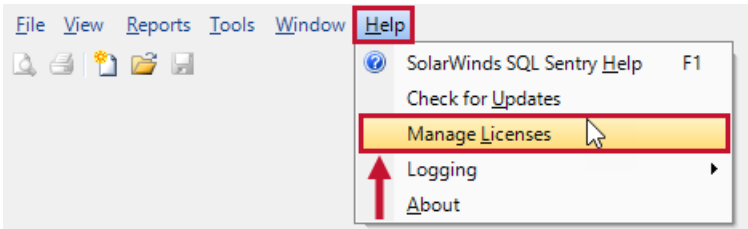
```
so stopms -n LHP85 --all
```

Unified Installation

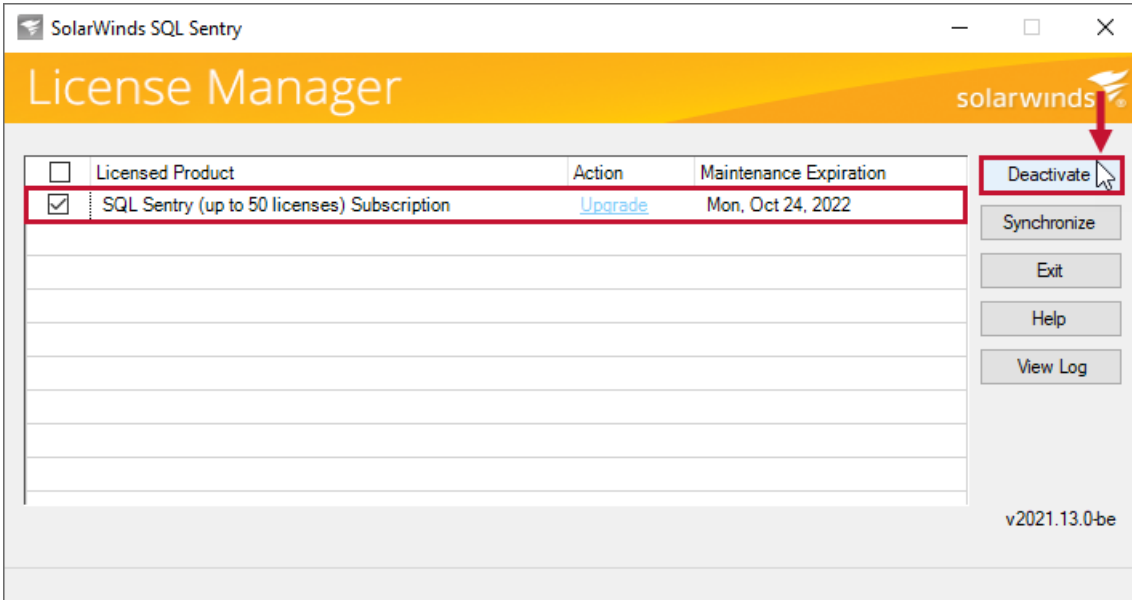
1. Open Windows Services on your Monitoring Service machine(s) and **Stop the SentryOne Monitoring Service.**



2. Open the SQL Sentry Client, and select **Help > Manage Licenses** to open the SolarWinds License Manager.



3. Select the applicable license(s), and then select **Deactivate**.

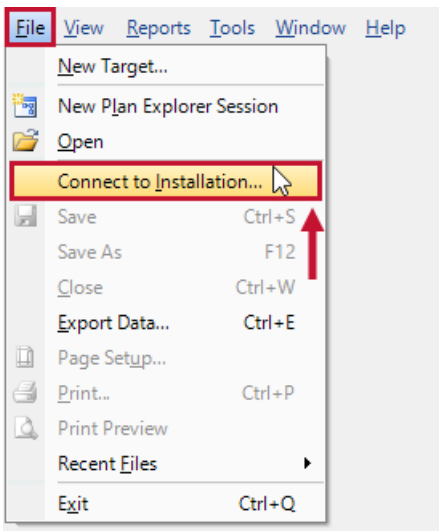


⚠ Important: Deactivate all licenses that you will use with your Availability Group connection.

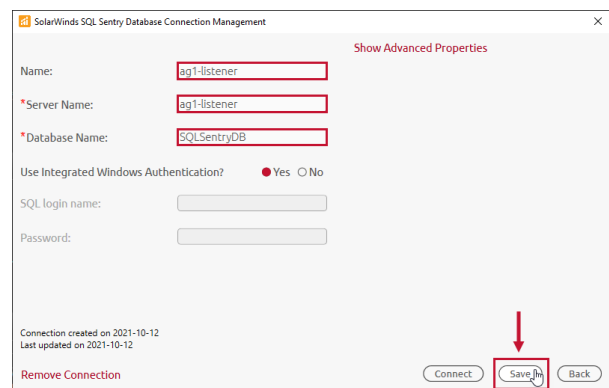
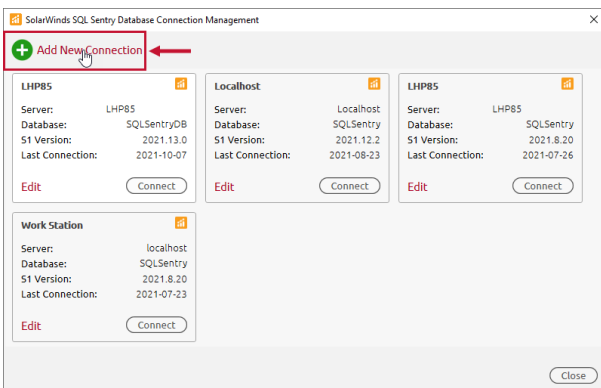
4. Join the SQL Sentry Database to your Availability Group.

[🔗 Additional Information:](#) For more information about joining a database to an availability group, see the following [MSFT article](#).

5. In the SQL Sentry Client, select **File > Connect** to open the SolarWinds SQL Sentry Database Connection Management window.



6. Select **+ Add New Connection** to add your listener connection. Enter the friendly name under **Name**, enter the listener name under **Server Name**, and enter the existing SQL Sentry database under **Database Name**. Select **Connect** to test your connection, and then select **Save** to save the listener connection.



Note: Once you have successfully connected to and saved your listener connection, a SQL Sentry window will open to the configured listener connection. Do not close the listener connection window.

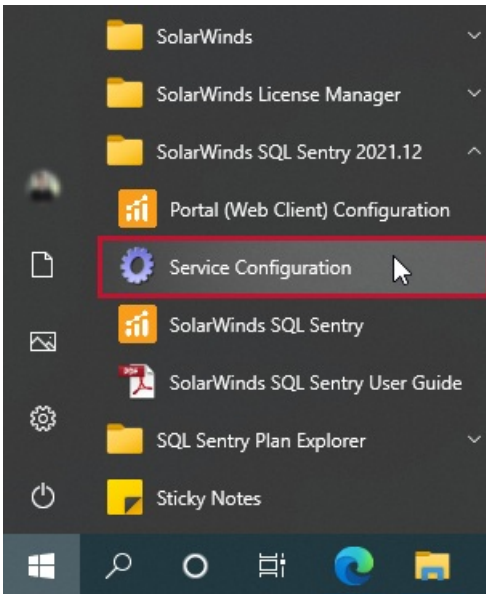
7. Close the SQL Sentry Client for your previous connection.

Configuring the Monitoring Services

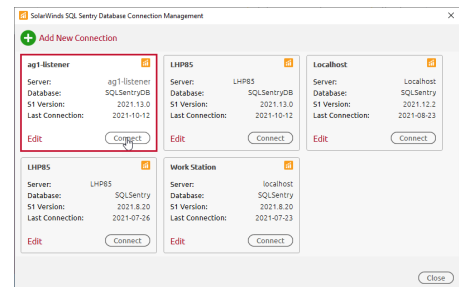
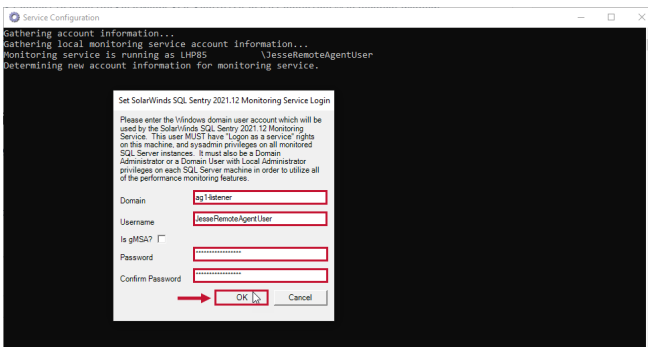
Configure your SentryOne Monitoring Service(s) to connect through the listener with the Unified Installer or EPI Installer:

Unified Installation

1. Select **Start > SolarWinds SQL Sentry > Service Configuration** to open the SQL Sentry Service Configuration Manager.



2. Enter the listener connection information, and then select **Ok** to connect the monitoring service to the listener.



3. Repeat step 2 for each monitoring service that will connect to the listener.

EPI Installation

Note: To update the SQL Sentry Monitoring Service connection(s), the monitoring service(s) will need to be uninstalled and then reinstalled. The so update command only updates the Service Account and Service Account password.

Additional Information: For more information about EPI commands, see [EPI Commands](#).

1. Open Windows Powershell as an Administrator.

2. Use `so uninstall -n <connectionName>` to uninstall the controller service and monitoring service. Repeat this command for each monitoring service connection.

```
so uninstall -n LHP85
```

3. Use `so addreg -n <connectionName> --serverName <AG listener> --databaseName <dbName>` to create a new registration for the listener.

```
so addreg -n ag1-listener --ag1-listener --SQLSentryDB SQLSentryDB
```

4. Use `so install -n <listenerConnectionName> --AcceptLicenseTerms -u <serviceAccount> -p <passwordClearText>` to install the monitoring and controller services.

```
so install -n ag1-listener --AcceptLicenseTerms -u JesseRemoteAgentUser -p TempPassWord!
```

Activating Licenses

1. Stop all SentryOne Monitoring Services for the Unified installation or EPI installation:

EPI Installation

1. Use `so stopms -n <connectionName> --all` to stop the monitoring service connections.

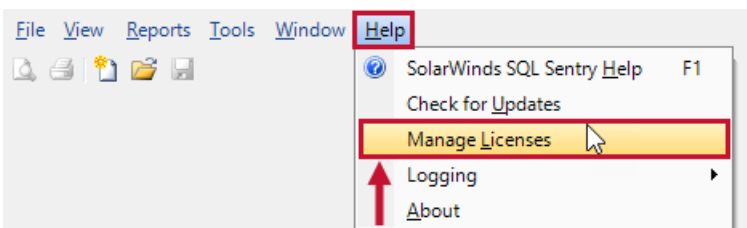
```
so stopms -n ag1-listener --all
```

Unified Installation

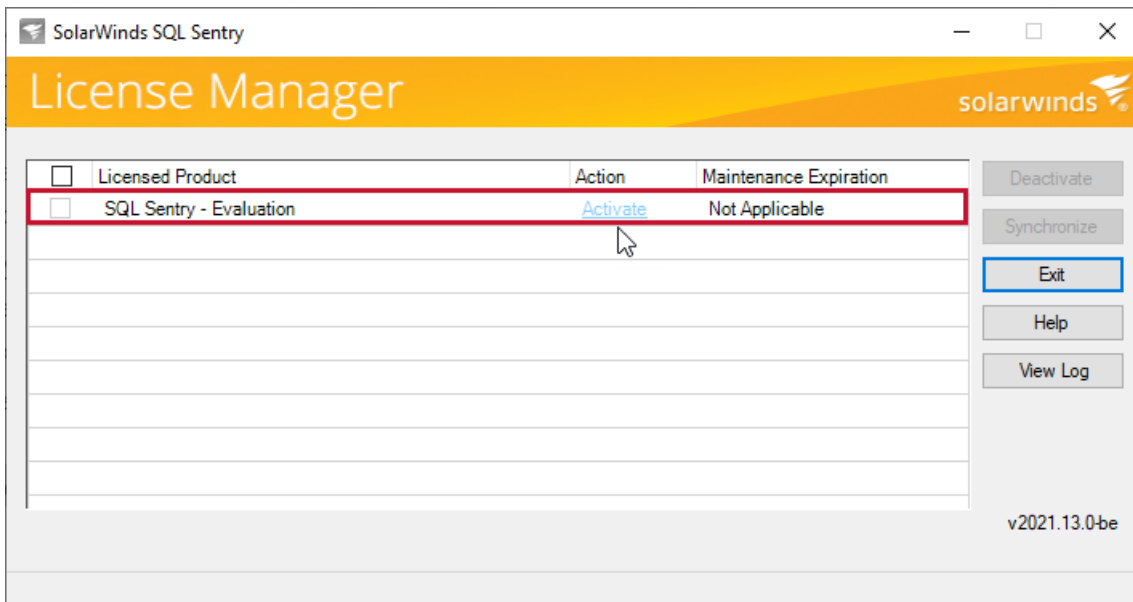
1. Log onto each machine and stop the Monitoring Service.

Note: You can right-click Services(Local) in your local services, and then select Connect to another computer to start a service remotely. You can also use PowerShell or the Command Window to remotely start a monitoring service.

2. Open the SQL Sentry Client and connect to your listener connection. Select **Help > Manage Licenses** to open the SolarWinds License Manager.



3. Select the applicable license and then select **Activate** to activate your license.

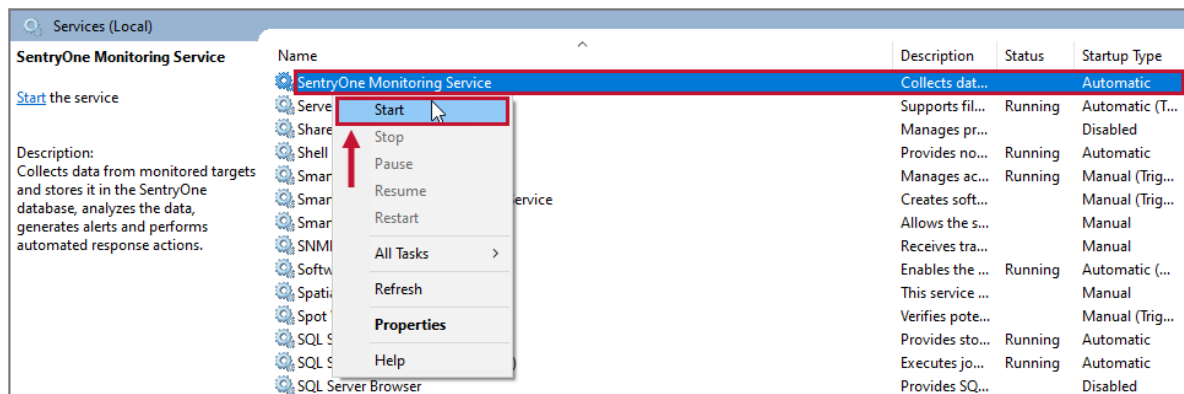


[Additional Information:](#) For more information about activating your license in the SolarWinds License Manager, see the [SQL Sentry License Management](#) article.

4. Start the SentryOne Monitoring Service(s):

Unified Installation

1. Open Windows Services for your machine(s) and **start the SentryOne Monitoring Service.**



EPI Installation

1. Use the `so startms -n <connectionName> --all` command to start the SentryOne Monitoring Service(s).

```
so startms -n ag1-listener --all
```