

Database Mapper Configuration Utility

Last Modified on 05 November 2021

Prerequisites

Before installing Database Mapper Software, ensure your credentials and machine(s) meet the [System Requirements](#) as well as the security and additional requirements listed below.

Additional Requirements

- Chrome and Microsoft Edge (the Edge version [based on Chromium](#)) are the recommended browsers for using Database Mapper Software.
 - **Note:** Only Windows devices are officially supported.
- The preferred IP address and port that Database Mapper software should use to listen for HTTP traffic.

Note:

- If you plan to change the binding address or port, ensure that there isn't already something listening to that address and port on the machine.
 - If you are running Database Mapper Software on a virtual machine, it's recommended to keep the default IP address of `0.0.0.0`. Setting it to `127.0.0.1` may make it so that it can be accessed from the local host, but not other locations in the domain.
- The default port for the Database Mapper Software Host is 44302.
- The default port for the Database Mapper Software API is 44322
- It's recommended to set the IP address to `127.0.0.1` if you're planning to route requests through IIS or other reverse proxy on the same machine as the service. This will prevent external requests from directly reaching the service.

Database Mapper Software Configuration Utility

Changes to your Database Mapper Software configuration must be made through the Database Mapper Configuration Utility (DMCU).

Installing the DMCU

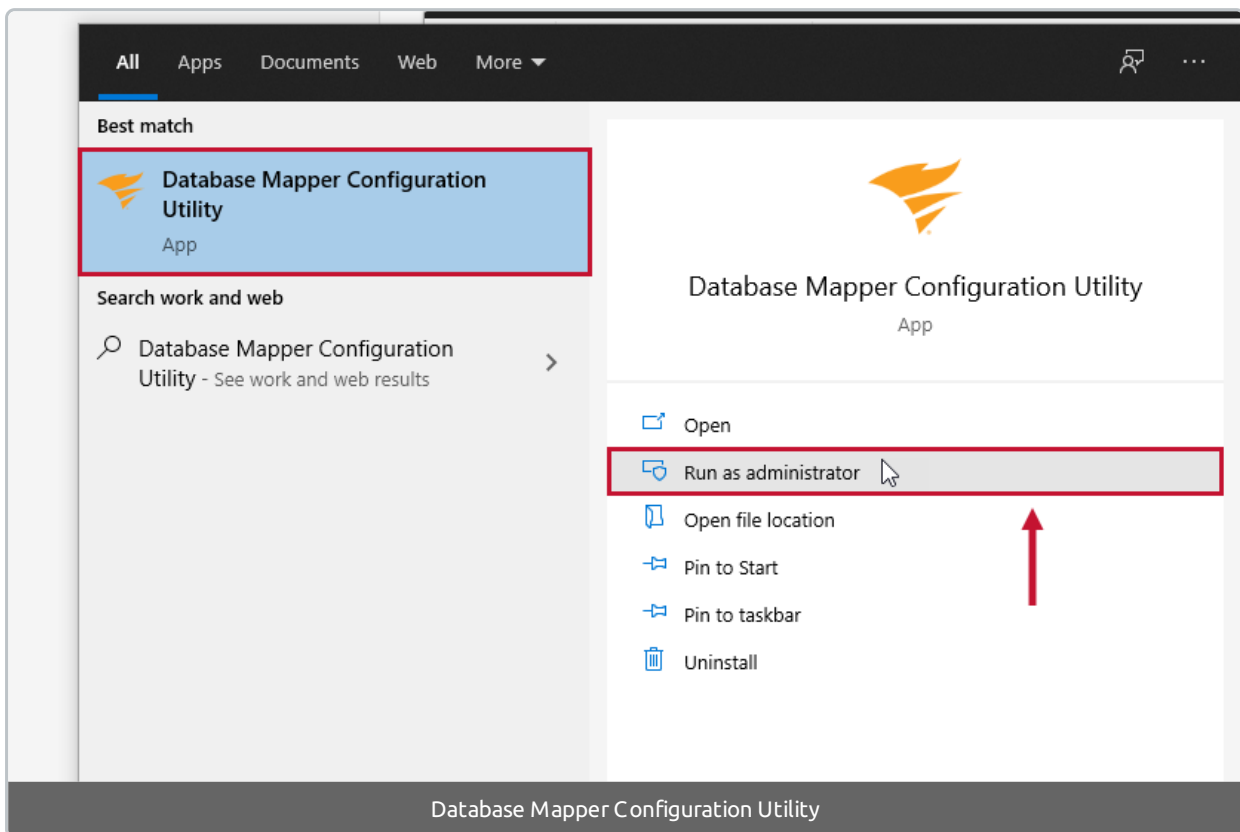
The Database Mapper Configuration Utility is installed through the [Database Mapper Software Installer](#).

Accessing the DMCU

Database Mapper Software

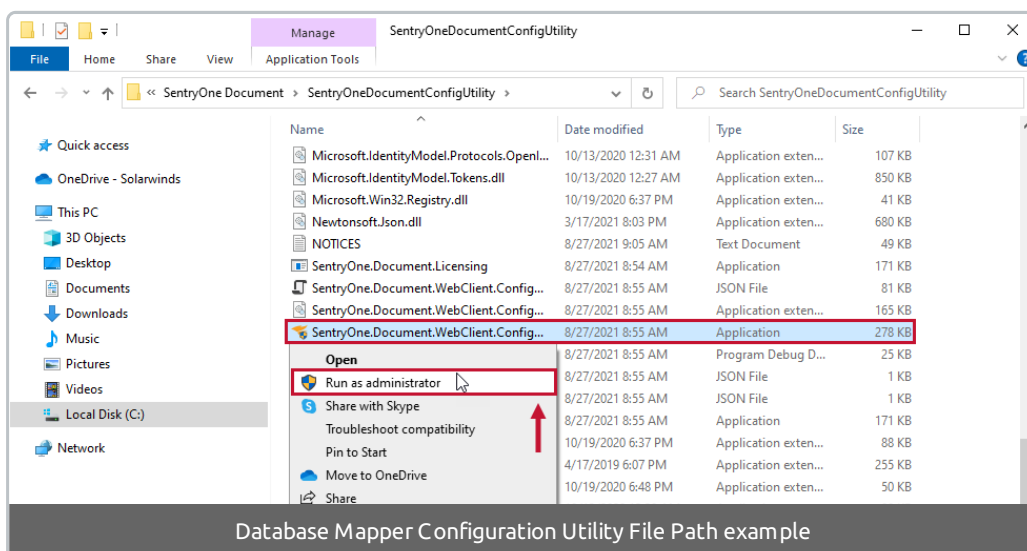
After installing Database Mapper Software, the Database Mapper Configuration tool is set to launch by default.

You can also locate the DMCU through the file directory or use the **Windows Start** menu as *Database Mapper Configuration Utility*. When you open the DMCU, use the **Run as administrator** option to open it.



File path:

1. Navigate to the **SentryOne DocumentConfigUtility** directory in your Database Mapper Software installation. The default path is **C:\Program Files (x86)\SentryOne\SentryOne Document\SentryOneDocumentConfigUtility**. In this example, we are using the default file path.
2. Locate the **SentryOne.Document.WebClient.ConfigurationUtility** file and use the **Run as administrator** option to open it.



Using the DMCU

The DMCU allows you to change database, network, security, and web server binding-related properties for Database Mapper Software. Select the **Verify & Save** button to apply any changes.

The DMCU also provides an option to stop/start the Database Mapper Host and API Services (Database Mapper Host and Database Mapper API in Windows Services).

⚠ Important: If the Database Mapper Services failed to install, open the Event Viewer for more information.

Database Connection


Database Settings

Option	Description
Server	The Server name where Database Mapper software is installed.
Database Name	The Database name for your Database Mapper software installation.
Username	The login used for the Database Mapper Remote Agent service.
Password	The password for the Database Mapper Remote Agent service login.

Windows Login / SQL Login Option	The Windows or SQL Server credentials for your Database Mapper Software Server connection.
-------------------------------------	--

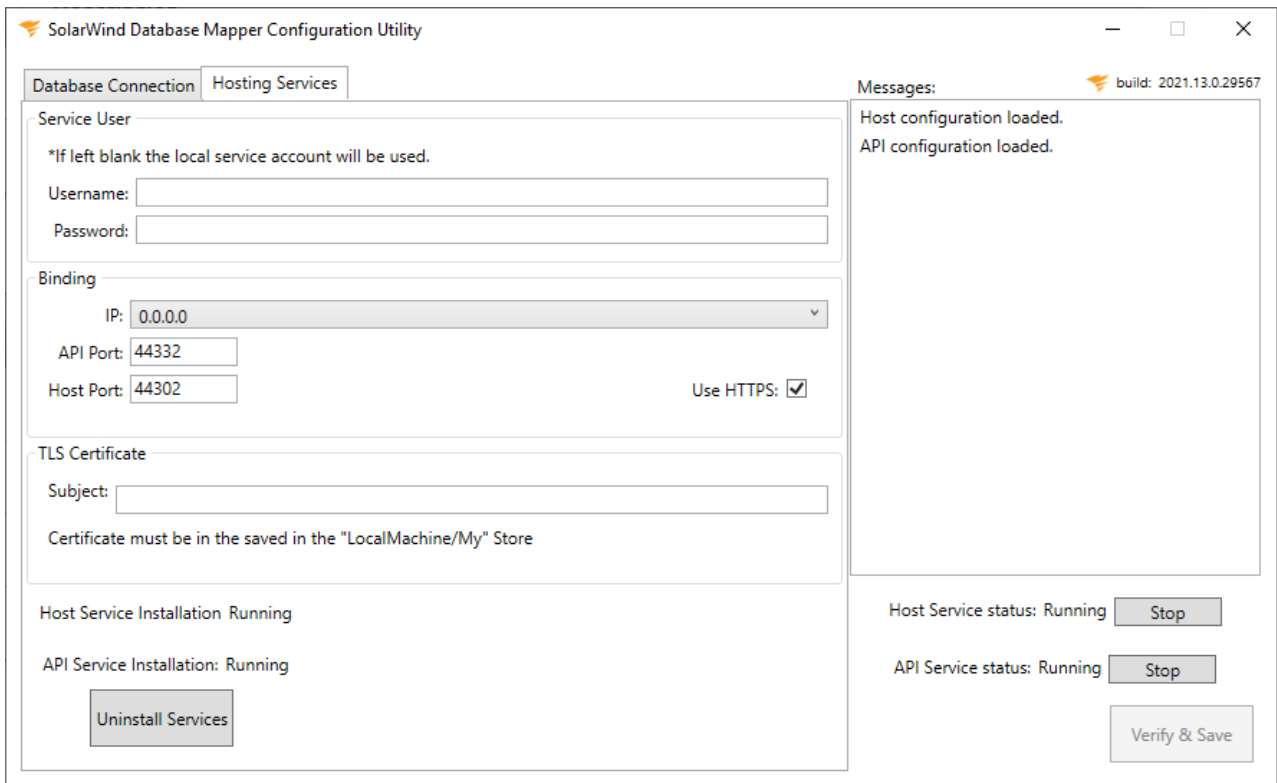
Advanced Properties

Option	Description
Port	The port used to connect to your Database Mapper software site.
Packet Size	The network packet size for your Database Mapper connection. Select an option from the drop-down list.
Encrypt Network Traffic	Select the checkbox to encrypt network traffic.
Trust Server Certificate	Select the checkbox to trust the server certificate.
Multi Subnet	Select the checkbox to apply multi subnet to the connection.

 **Additional Information:** For more information about the settings in the **Advanced Properties:**

- **Port:** See the [Setting the Connection Properties](#) topic from Microsoft Docs for more information on the *portNumber* property.
- **Packet Size:** See the [Configure the network packet size Server Configuration Option](#) topic from Microsoft Docs for additional information on SQL Server network pack sizes.
- **Encrypt Network Traffic:** See the [Enable Encrypted Connections to the Database Engine](#) topic from Microsoft Docs.
- **Trust Server Certificate:** See the [Setting the Connection Properties](#) topic from Microsoft Docs for more information on the *trustServerCertificate* property.
- **Multi Subnet:** See the [Setting the Connection Properties](#) topic from Microsoft Docs for more information on the *multiSubnetFailover* property.

Hosting Services



Service User

Option	Description
Username	The username for the hosting service.
Password	The password for the hosting service username.

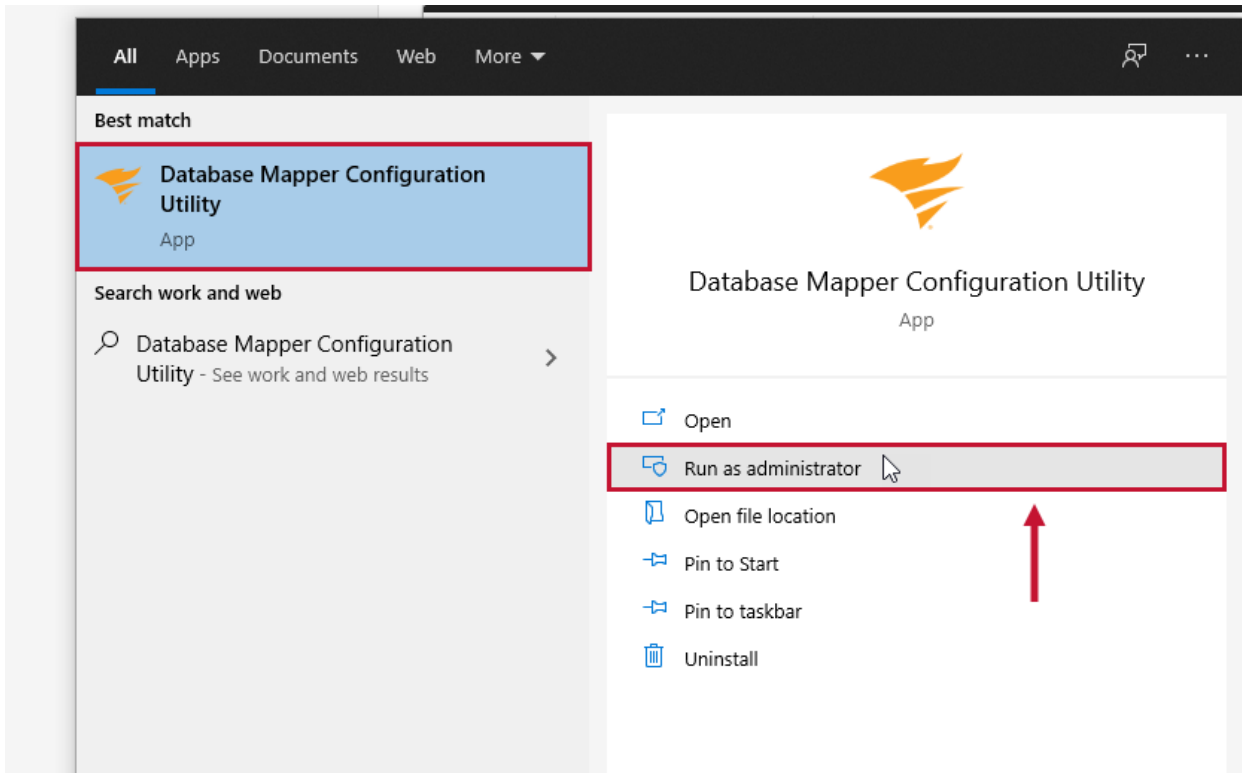
Binding

Option	Description
IP	The binding IP address for your connection. Use the drop-down list to select an IP address.
API Port	The port used to connect to the API Service. Note: The default API Port is 44322.
Host Port	The port used to connect to the Host Service. Note: The default Host Port is 44302.
Use HTTPS	Select the checkbox to Use HTTPS and enter a TLS certificate.

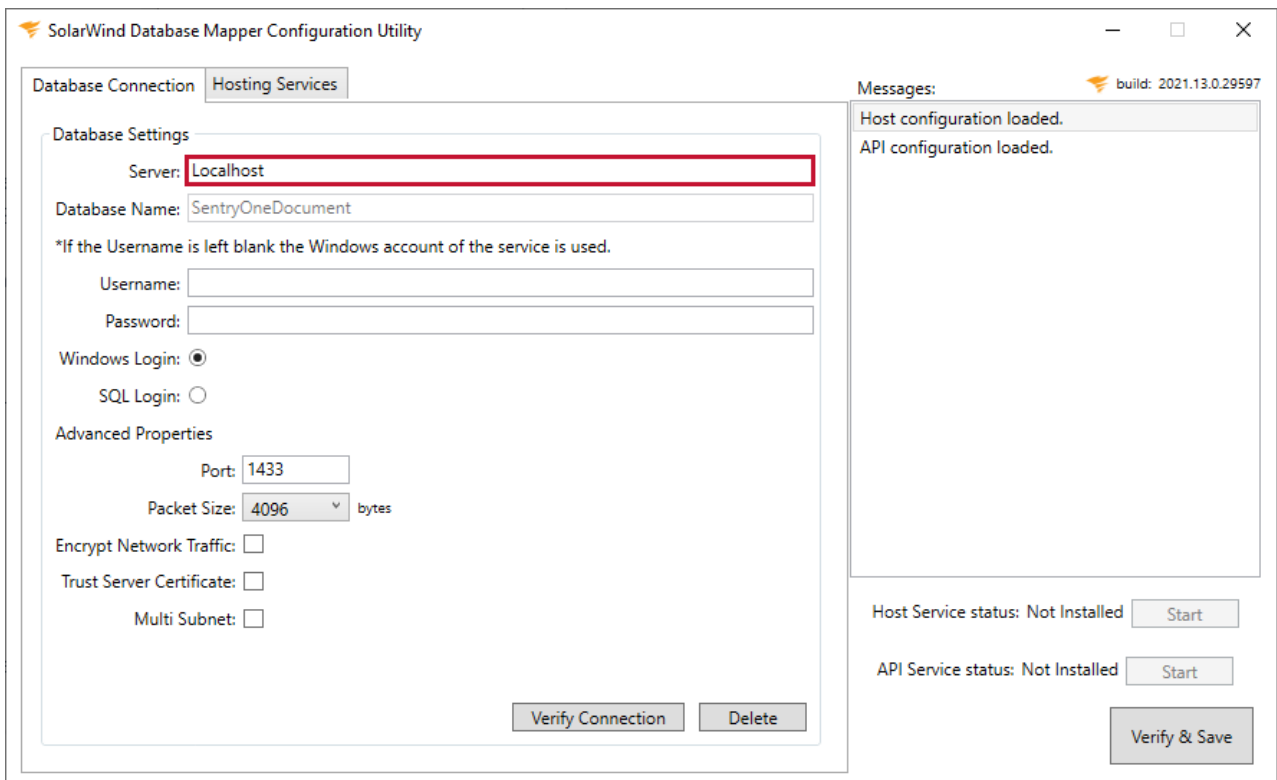
Establishing your Connection

Use the Database Mapper Configuration Utility to create a site for your Database Mapper Software environment. Establish a connection by completing the following steps:

1. Open the Database Mapper Configuration Utility as an administrator.



2. Enter your Database Server for your Database Mapper Software connection.



Note: The database for Database Mapper Software is named SentryOneDocument. If you don't have a Database Mapper Software database, the SentryOneDocument database will be installed onto your Database Server.

3. Select the credentials to use for your database connection, and then enter a valid username and password.

The screenshot shows the 'SolarWind Database Mapper Configuration Utility' window. It has two tabs: 'Database Connection' and 'Hosting Services'. The 'Database Connection' tab is active. The 'Database Settings' section includes: 'Server: Localhost', 'Database Name: SentryOneDocument', 'Username: sql_JesseS', 'Password: *****', 'Windows Login:

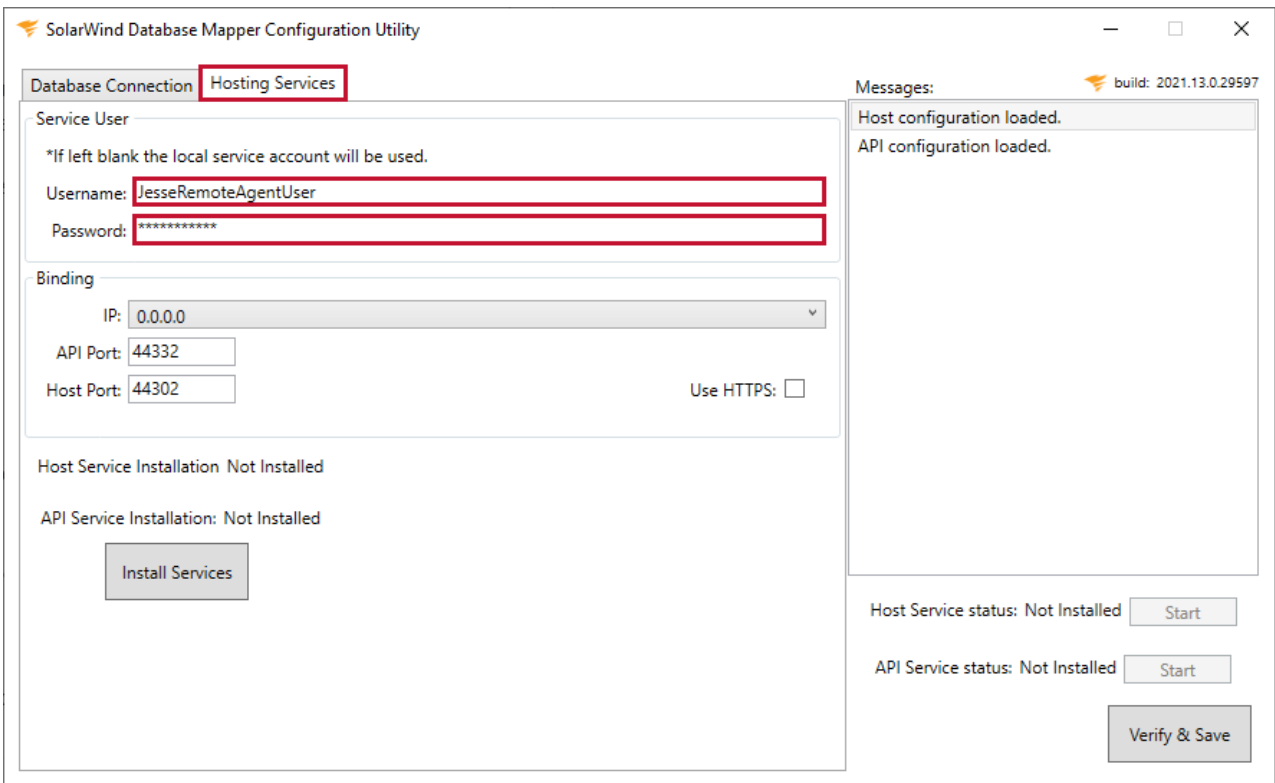
Note:

- If you select Windows Login and don't enter a username, the Database Mapper Configuration Utility will use the Windows Service account.
- You can use the **Verify Connection** button to verify your Database Connection credentials.

4. Configure any applicable Advanced Properties for your connection.

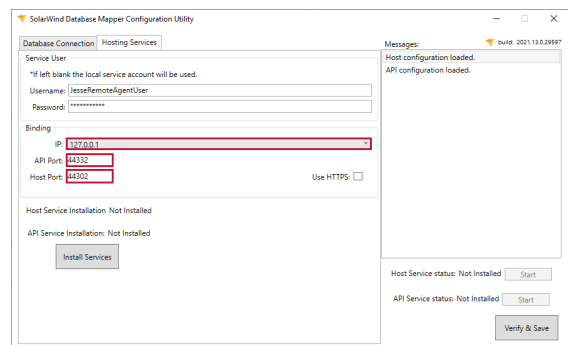
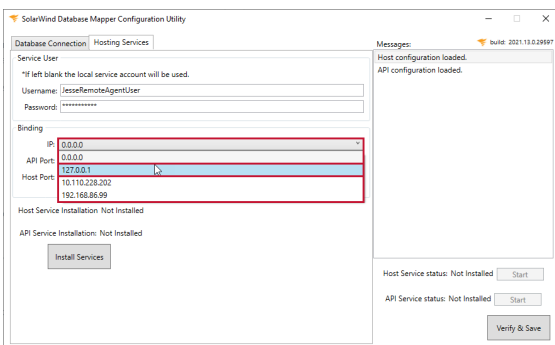
Additional Information: For more information about Advanced Properties within the Database Mapper Configuration Utility, see the Advanced Properties section.

5. Select the **Hosting Services** tab, and then enter the username and password for the service account.

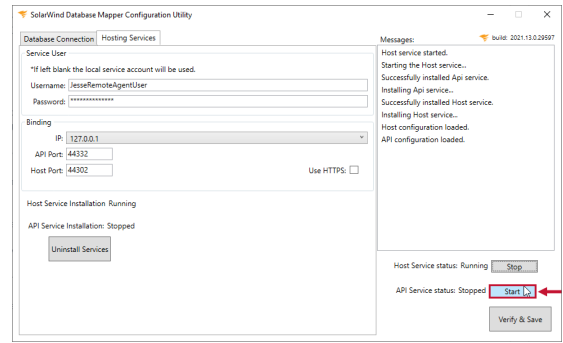
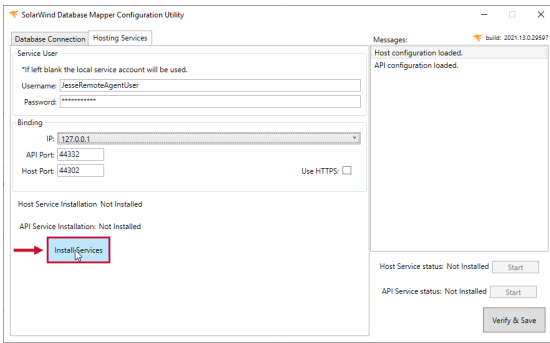


Note: The DMCU will use the local service account if the Service user username and password are left blank.

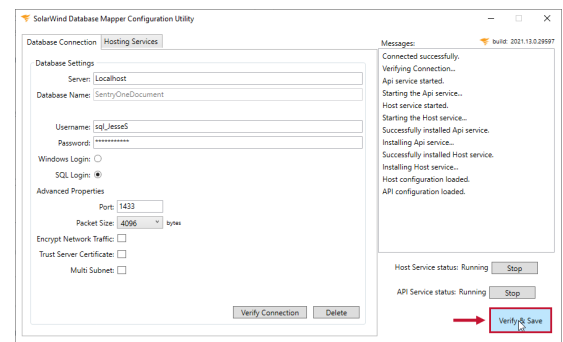
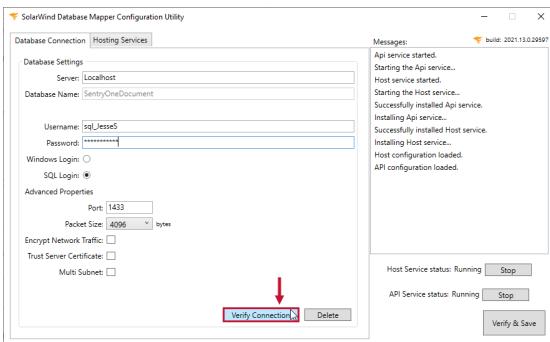
6. Select the IP address you want to use for the binding from the drop-down menu. Enter the desired API, and Host ports.



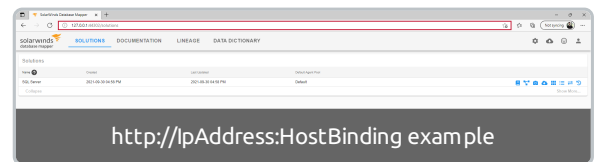
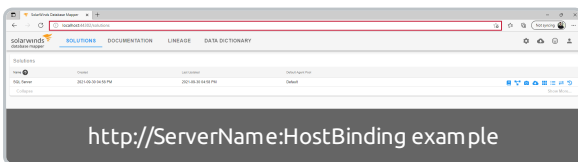
7. Select **Install Services** to install the Host Service and API Service. Select the **Start** button for the Host Service and API Service.



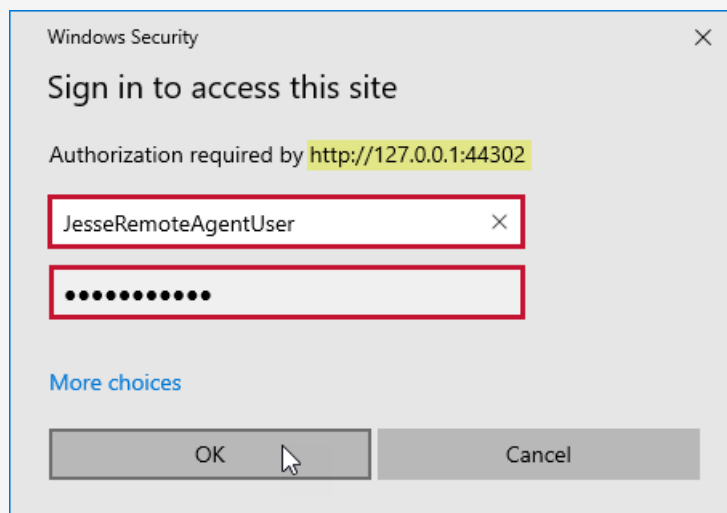
8. Select the Database Connection tab, and then select **Verify Connection**. Select **Verify & Save** to verify your configured settings, and save your Database Mapper Software connection.



9. Open your Database Mapper Software connection in your web browser. Your URL will use the following syntax: **http://ServerName:HostBinding** or **http://IpAddress:HostBinding**.



Note: In this example, our Database Mapper Software URL is **http://localhost:44302**. You will be prompted to login with your Integrated or SQL Server Credentials used for the Hosting Services account.



⚠ Important: If you selected the Use HTTPS checkbox, your URL will begin with **https://** .