

Getting Started with SQL Sentry Event Calendar

Last Modified on 09 August 2021

Introduction

Video Overview

Opening Event Calendar

When opening a target from the SQL Sentry navigator, you'll be asked to select Event Calendar or [Performance Analysis](#).

View Selector

Please select the view from the list below:

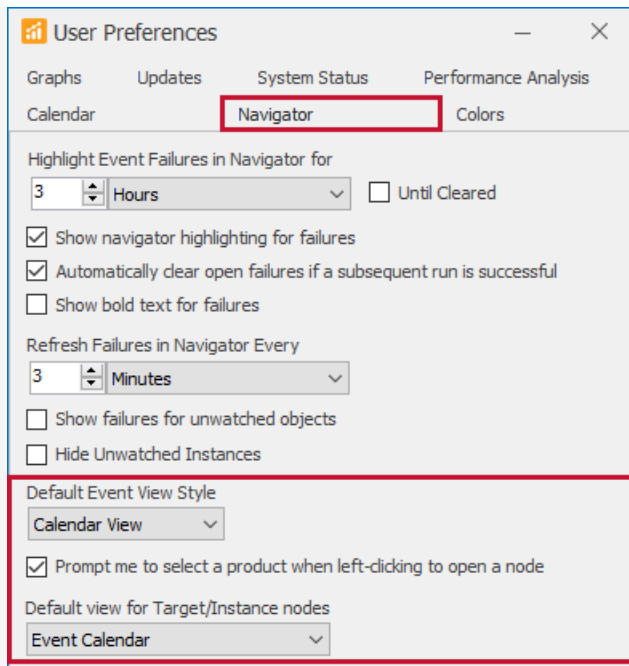
Product Name
Event Calendar
Performance Analysis

Always prompt me when I left-click to open a node

If you deselect this option, the view selected as the default above will be opened automatically whenever you left-click to open a node. The default can be changed at any time in Tools->User Preferences.

Note: You can always bypass this screen by right-clicking a node instead and using the Open context to choose from available views in the submenu.

Note: As mentioned in the **View Selector** message, if you want to always go to the **Event Calendar** or **Performance Analysis** by default, you can change this in [User Preferences](#) to bypass the popup.



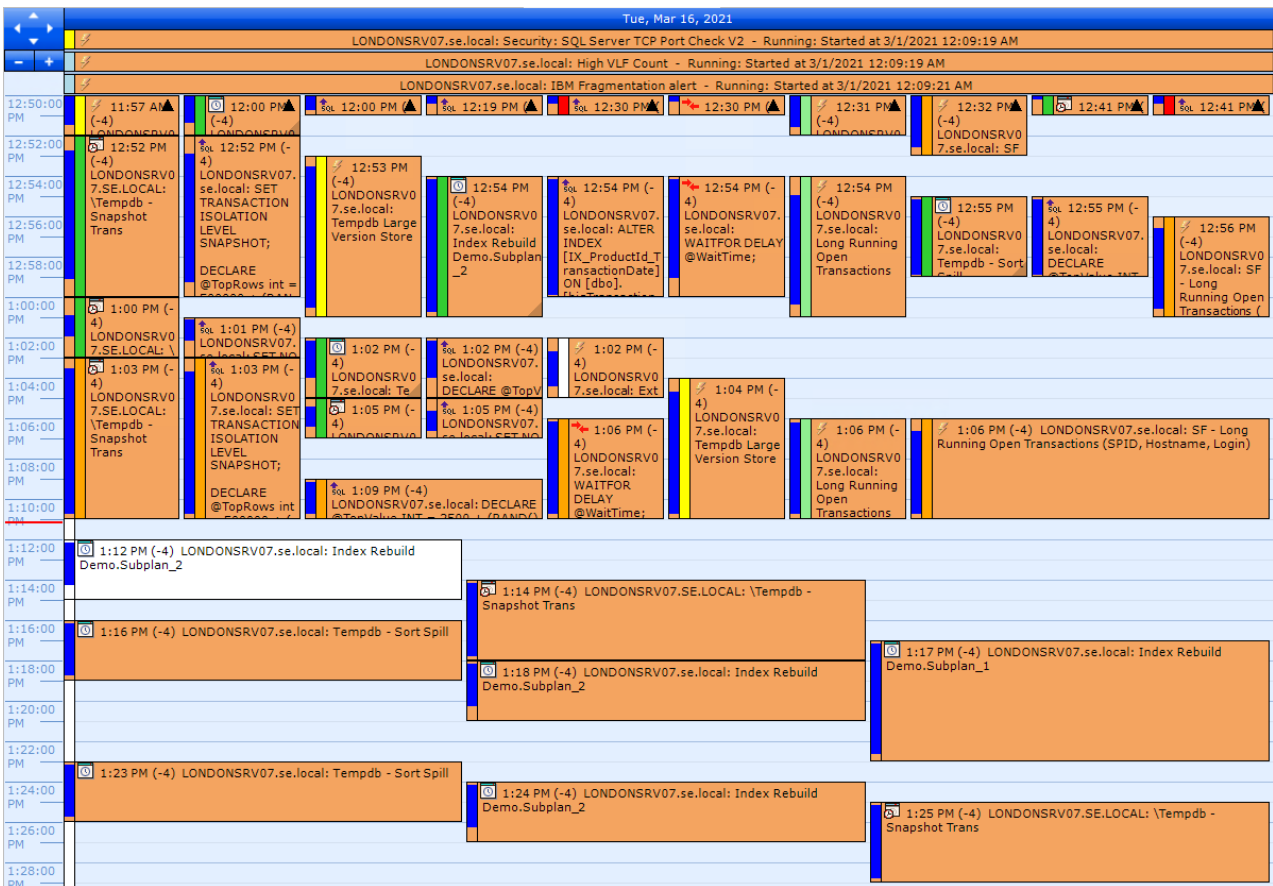
Deselect the **Prompt me to select a product when left-clicking to open a node** option, then select *Calendar View* or *Performance Analysis* as your default.

For the **Default Event View Style**, you can choose *Calendar View*, *List View*, or *Split View*. These views are introduced below and explained in more detail in the [Calendar & List Views](#) article.

Event Views

Calendar

The **calendar** view provides a visual way to understand what is happening on the target and when. The default view shows you the current time. You can look back to troubleshoot a performance issue or jump forward to view scheduled jobs. Looking forward is helpful to discover a hot spot of upcoming activity that might lead to blocking or other performance issues.



Note: The default calendar view can be busy on some targets, so remember that you can zoom into a shorter period of time. The view above shows a one hour view instead of the one day default. Zooming and other navigation options are shown in the [Calendar & List Views](#) article.

List

The **list** view (use the **View** drop-down in the top navigation bar to access) provides an expandable list of events for the selected time period. This can be a great way to view large jobs that have multiple steps. This puts them into an organized list that you can expand for more details.

Event Source Name	Object Name	Start Time	End Time	Duration	Run Status	Message Text
▲ Event Source Name: LONDONSRV07.se.local: Advisory Conditions: SQL Server						
▲ Object Name: Check Constraints Not Trusted						
🔍		2021-03-01 00:09:21	2021-03-16 13:38:48	15.12:29...	In Progress	Active
▲ Object Name: Database Backup Diff SLA Breached						
🔍		2021-03-01 00:09:24	2021-03-16 13:38:48	15.12:29...	In Progress	Active
▲ Object Name: Database Backup Log SLA Breached						
🔍		2021-03-15 05:56:45	2021-03-15 19:14:14	13:17:28...		Completed: Condition No Longer Met
▲ Object Name: Extended Buffer Pool PLE						
🔍		2021-03-15 13:45:24	2021-03-15 13:48:19	00:02:55...		Completed: Condition No Longer Met
🔍		2021-03-15 13:43:08	2021-03-15 13:44:48	00:01:40...		Completed: Condition No Longer Met
🔍		2021-03-15 13:27:06	2021-03-15 13:28:16	00:01:10...		Completed: Condition No Longer Met
🔍		2021-03-15 13:09:38	2021-03-15 13:12:48	00:03:10...		Completed: Condition No Longer Met
🔍		2021-03-15 12:52:04	2021-03-15 12:54:24	00:02:20...		Completed: Condition No Longer Met
▲ Object Name: Foreign Keys Not Trusted						
🔍		2021-03-01 00:09:22	2021-03-16 13:38:48	15.12:29...	In Progress	Active
▲ Object Name: High VLF Count						
🔍		2021-03-01 00:09:19	2021-03-16 13:38:48	15.12:29...	In Progress	Active
▲ Object Name: IBM Fragmentation alert						
🔍		2021-03-01 00:09:21	2021-03-16 13:38:48	15.12:29...	In Progress	Active
▲ Object Name: Long History - Backups						
🔍		2021-03-01 00:09:21	2021-03-16 13:38:48	15.12:29...	In Progress	Active
▲ Object Name: Long Running Open Transactions						
🔍		2021-03-15 13:44:28	2021-03-15 13:54:55	00:10:26...		Completed: Condition No Longer Met
🔍		2021-03-15 13:28:16	2021-03-15 13:43:18	00:15:02...		Completed: Condition No Longer Met
🔍		2021-03-15 13:17:44	2021-03-15 13:21:15	00:03:30...		Completed: Condition No Longer Met
🔍		2021-03-15 13:05:12	2021-03-15 13:06:17	00:01:05...		Completed: Condition No Longer Met
🔍		2021-03-15 12:49:18	2021-03-15 12:52:44	00:03:25...		Completed: Condition No Longer Met
🔍		2021-03-15 12:33:01	2021-03-15 12:48:08	00:15:07...		Completed: Condition No Longer Met
▲ Object Name: Production Databases not in FULL recovery mode						
🔍		2021-03-01 00:09:23	2021-03-16 13:38:48	15.12:29...	In Progress	Active
▲ Object Name: SECURITY - Check SQL Agent Job Owners						
🔍		2021-03-01 00:09:23	2021-03-16 13:38:48	15.12:29...	In Progress	Active
▲ Object Name: Security: Agent Job not owned by dbo						
🔍		2021-03-01 00:09:25	2021-03-16 13:38:48	15.12:29...	In Progress	Active
▲ Object Name: Security: SQL Server TCP Port Check						
🔍		2021-03-01 00:09:23	2021-03-16 13:38:48	15.12:29...	In Progress	Active

Note: All the columns and fields at the top of the **list** view have built in filter features. Hover over **Event Source Name**, **Object Name**, **Start Time**, **End Time**, **Duration**, **Run Status**, or **Message Text** to see the available filter options by selecting the **▼** filter icon that appears.

For example, use a **Run Status** filter to view only events that are *In Progress*, or use the **Custom Filter** option to build a more complex filter condition on any of these items.

Split

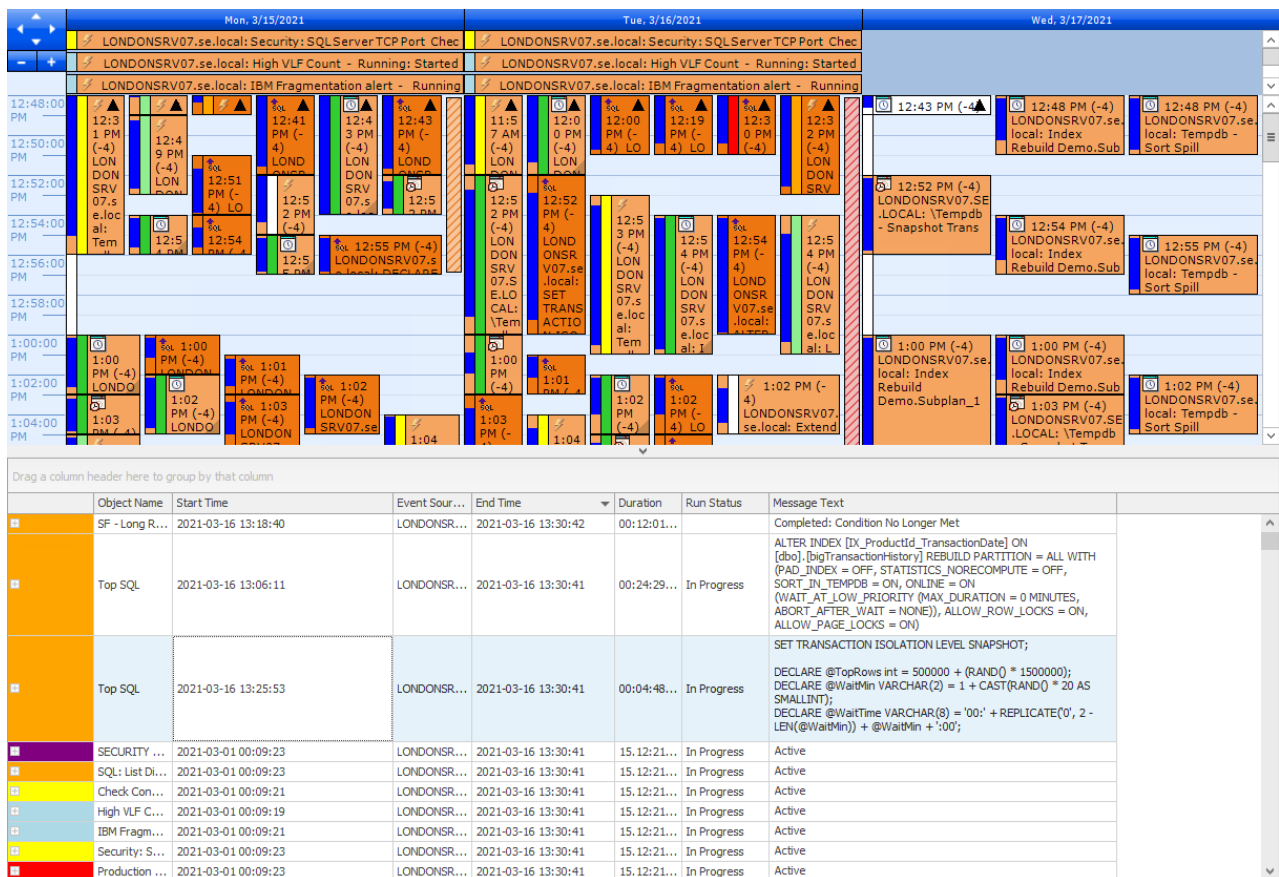
The **split** view option divides the event view between **calendar** and **list** views.

Additional Views and Filters

In addition to a single day, the views can show multiple days at the same time, filtered views, or a combination of views.

Multi-day view

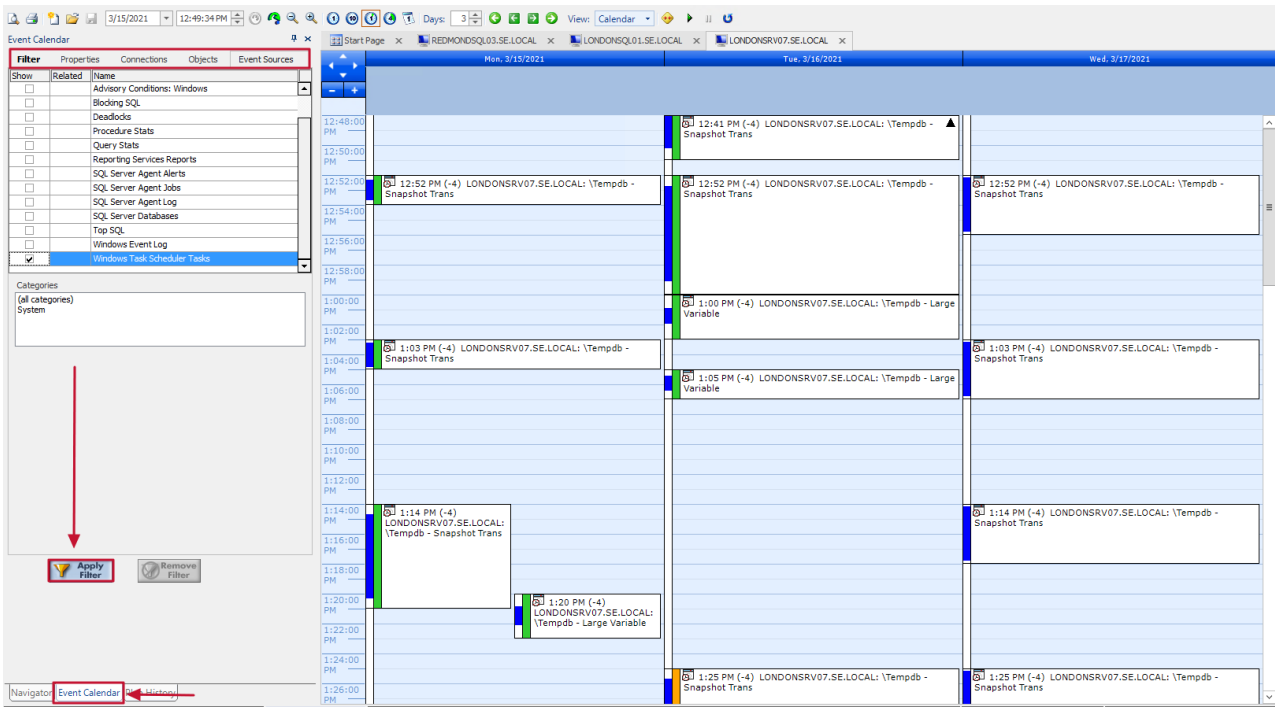
In the **split view** example below, the **Days** option is set to **3** and the view is displaying **today** (*Tue, 3/16/2021*) as well as **yesterday** (*Mon, 3/15/2021*) and **tomorrow** (*Wed, 3/17/2021*).



Filtered view

The **Navigator** pane has an **Event Calendar** tab that allows you to create filters for the event views. The filter has multiple tabs and options for statuses, event text, event sources, and more. In the example below, a multi-day view has a filter on the **Event Sources** tab applied to show only **Windows Task Scheduler Tasks**.

Set your filters, then select the **Apply Filter** button to apply it to the view.



Tips and Tricks

[Additional Information:](#) See [SQL Sentry Event Calendar Tips and Tricks](#) to dive into more ways to make the event calendar views work efficiently for you and make correlations between events and issues on your monitored targets.