

# Installing the Database Mapper Remote Agent and Configuration Tool

Last Modified on 28 February 2023

**EOL:** An [end of life](#) announcement has been made for Database Mapper on February 28, 2023. See the [Solarwinds End of Life Policy](#) for more information.

## In this article:

- [Installing](#)
- [Configuring](#)
- [Launching](#)

## Installing

### [Additional Information:](#)

- See the [System Requirements](#) article for important information, including required permissions.
- See the [Remote Agent](#) article for details about what it is and where you should install it.

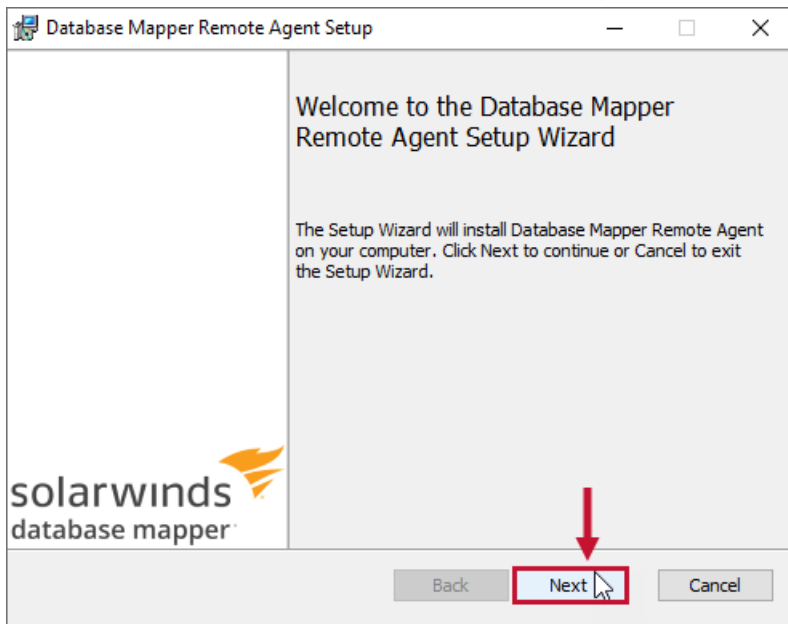
1. **Download:** Download the **Database Mapper Remote Agent Configuration Tool** from <https://document.sentryone.com/> by selecting the **Download Config Tool & Remote Agent** button. This will download **SolarWinds.DatabaseMapper.Agent.Installer.msi**.

SolarWinds Database Mapper  
Documentation hub for your data environment

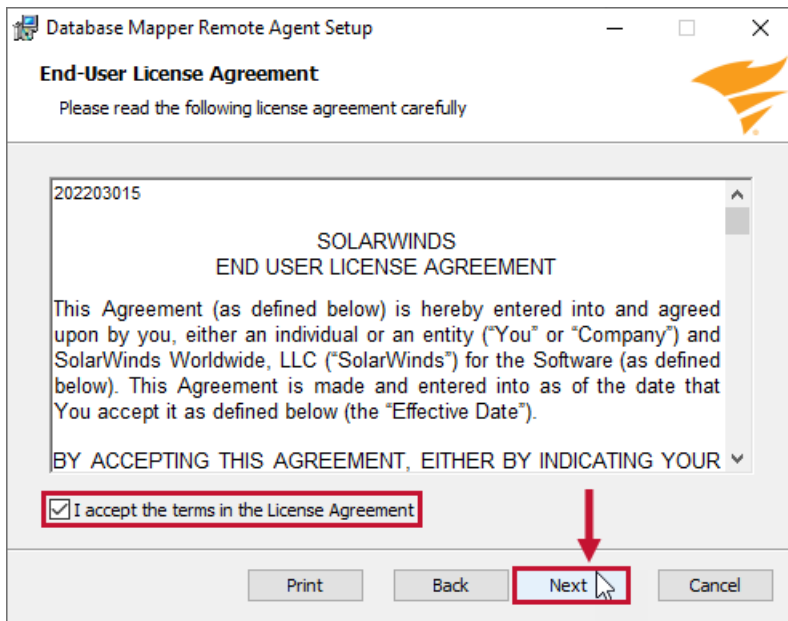
[Sign In To Get Started](#)

[Download Config Tool & Remote Agent](#)

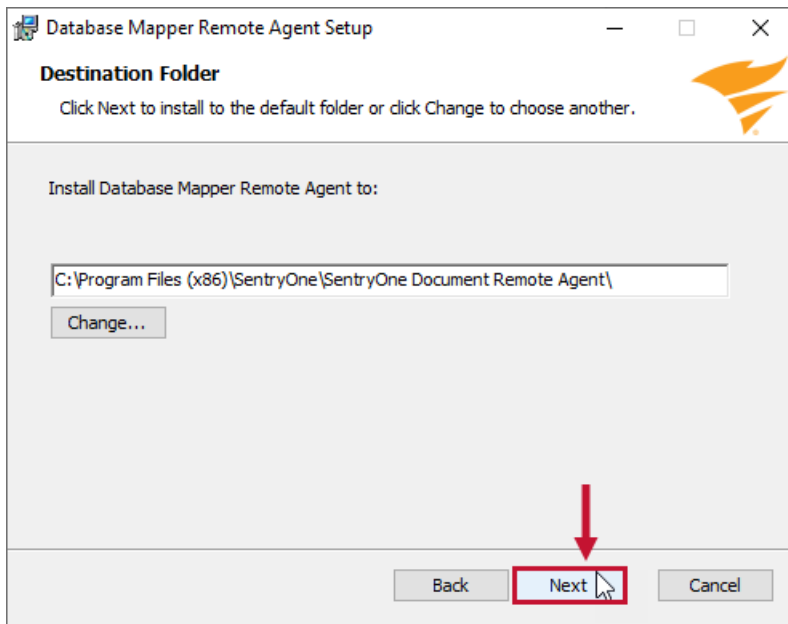
2. Execute the **SolarWinds.DatabaseMapper.Agent.Installer.msi** file to launch the **Database Mapper Remote Agent Setup** wizard. Select **Next** to continue.



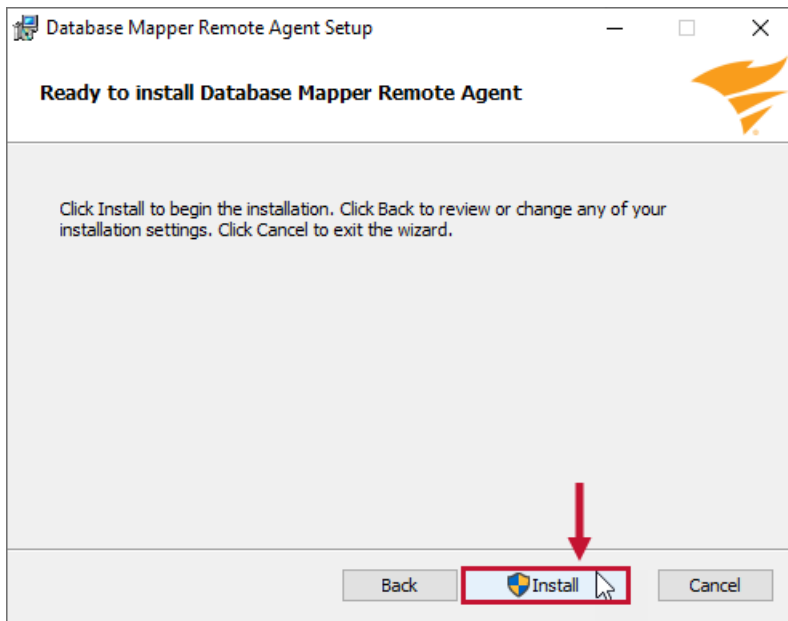
3. Select the box next to **I accept the terms in the License Agreement** to accept the [End-User License Agreement](#), then select **Next** to continue.



4. Select **Next** to accept the default installation direction, or use **Change** to set a custom installation directory before proceeding.

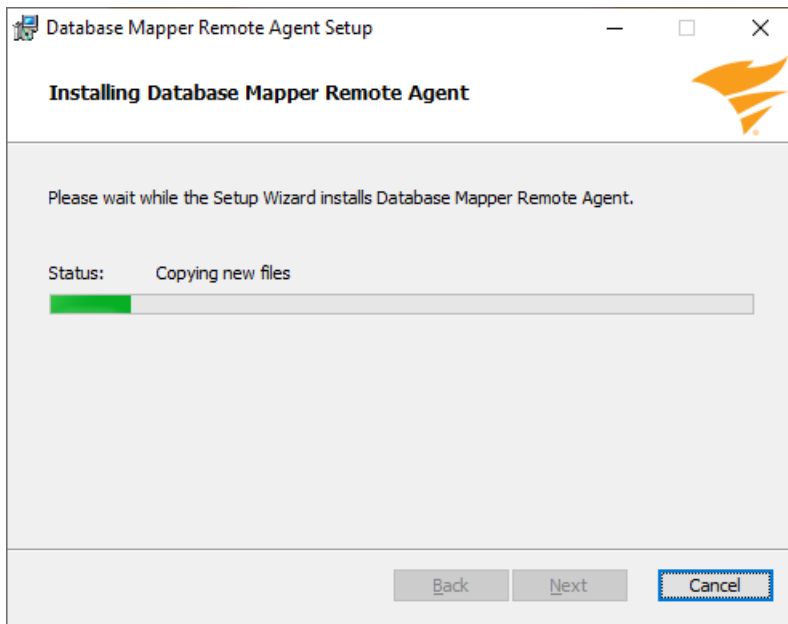


5. Select **Install** on the **Ready to install Database Mapper Remote Agent** screen to start the installation process.

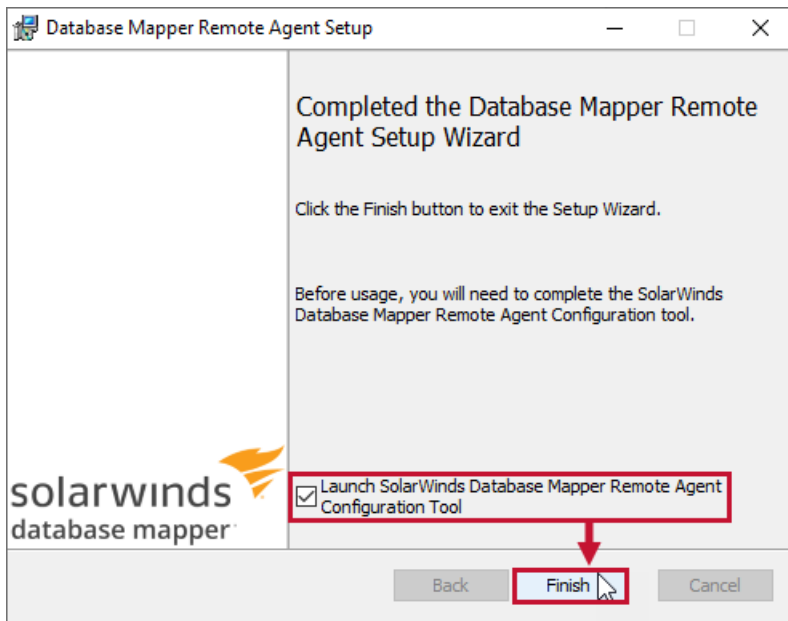


**Note:** Between this step and the next there may be a [User Account Control](#) popup message asking you if you want to allow the application to make changes. If the screen seems stuck and the install does not progress, the popup may be behind it.

6. The **Installing Database Mapper Remote Agent** screen will display the status of the installation process.



7. Select **Finish** to complete the installation. **Launch SolarWinds Database Mapper Remote Agent Configuration Tool** is checked by default and will open the application automatically.

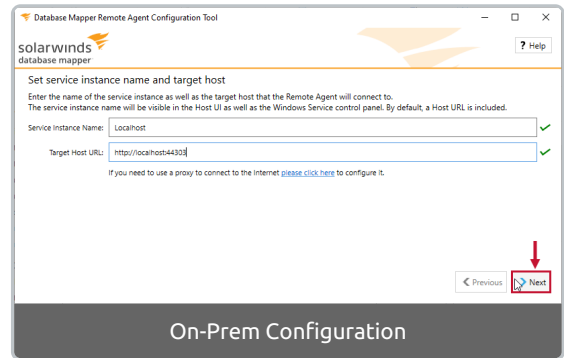
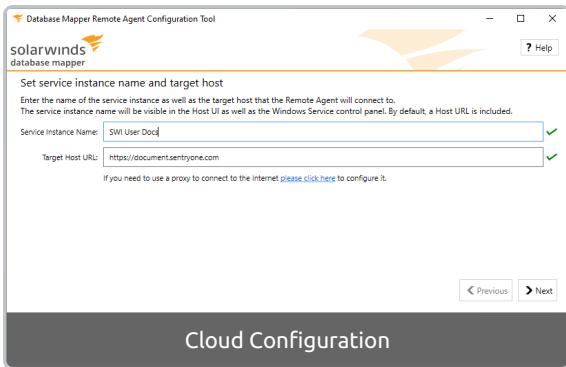


[Additional Information](#): See the [Troubleshooting Database Mapper](#) article if you are having trouble installing the remote agent.

## Configuring

Configure the settings for your remote agent in the **Database Mapper Remote Agent Configuration Tool**. Complete the following steps to finish your configuration:

1. Enter the instance name for your remote agent, and the service URL. Select **Next** to continue.



**Note:** If you need to use a proxy to connect to the Internet, use the link on the screen to configure it before proceeding.

### Important:

- The **Service Instance Name** is a friendly name for the agent. It appears in the application with this name, and the service name will be *SentryOne Document Remote Agent <Service Instance Name>* on the machine where it is installed.
- The **Target Host URL** (service URL) is set to *https://document.sentryone.com* by default and this is the URL you should use for Database Mapper cloud. For Database Mapper Software, you should use the on-premises host URL where you are hosting Database Mapper.
- The green check marks shown in the image above indicate a valid connection.

2. Enter the remote agent account username and password. Select **Next** to continue.

Database Mapper Remote Agent Configuration Tool

solarwinds  
database mapper

? Help

### Set service account details

Enter the name for the service account that will own the service instance. This account may need to be given permissions to resources in order to run snapshots (for example, to run a database snapshot). Please enter the account name in the form <domain>\<user>.

Service Account Name:  ✓

Service Account Password:  ✓

◀ Previous **Next** ▶

**Note:** The service account needs *Log on as a service* rights, as well as write permissions to the agent's configuration file **C:\ProgramData\PragmaticWorks\ServiceCore\SentryOneDocumentRemoteAgentService.{Agent Name}.xml**. If it doesn't have write access to this file, you may experience problems during the registration process. Other permissions to resources may be required in order to create snapshots.

3. Enter the number of **Maximum Concurrent Tasks** that the remote agent can complete (the default value is 4) and accept the default **Local Cache Path** or use the ... ellipsis to select a custom path. Select **Next** to continue.

Database Mapper Remote Agent Configuration Tool

solarwinds  
database mapper

? Help

### Set concurrency limit and cache path

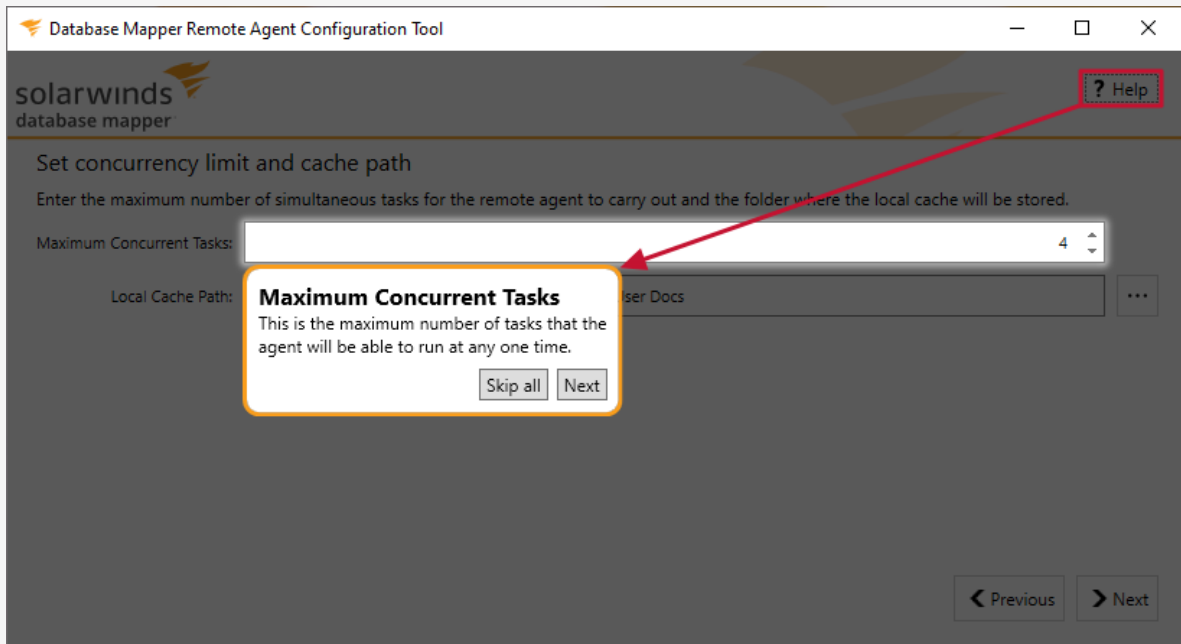
Enter the maximum number of simultaneous tasks for the remote agent to carry out and the folder where the local cache will be stored.

Maximum Concurrent Tasks:  4

Local Cache Path:  ...

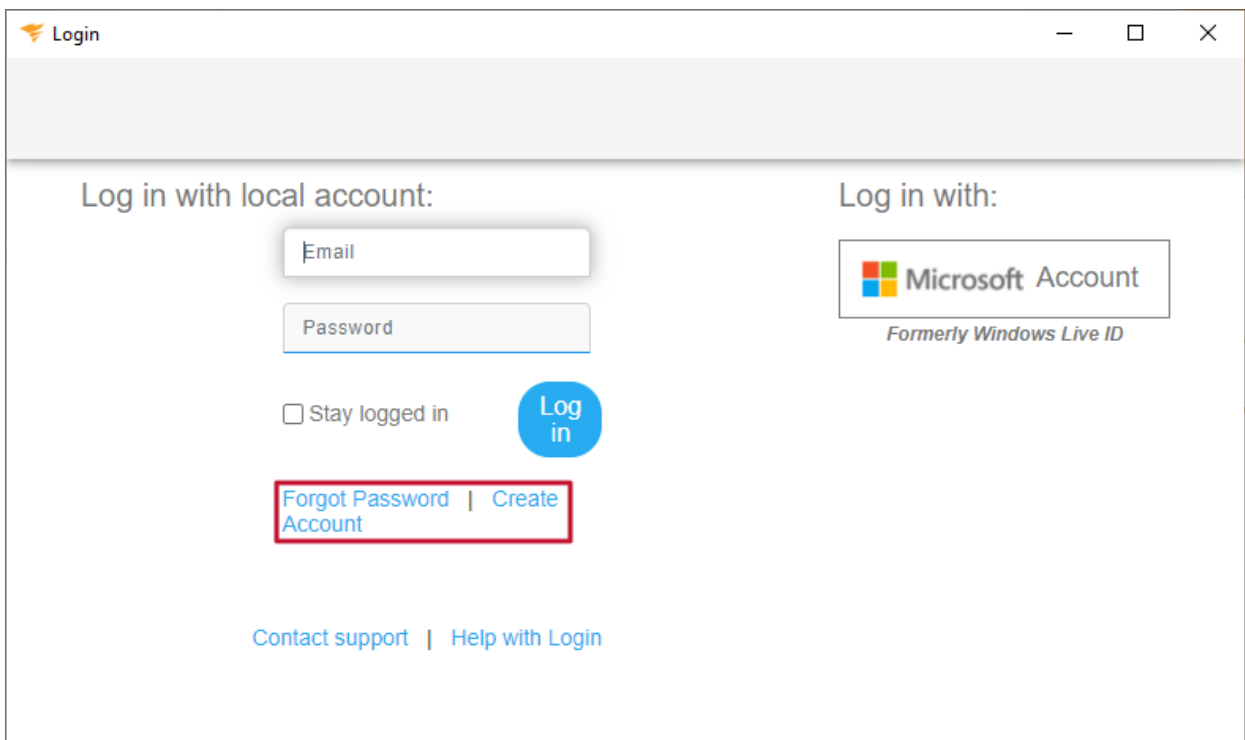
◀ Previous **Next** ▶

**Note:** Using the **?Help** button will display additional information about the fields.

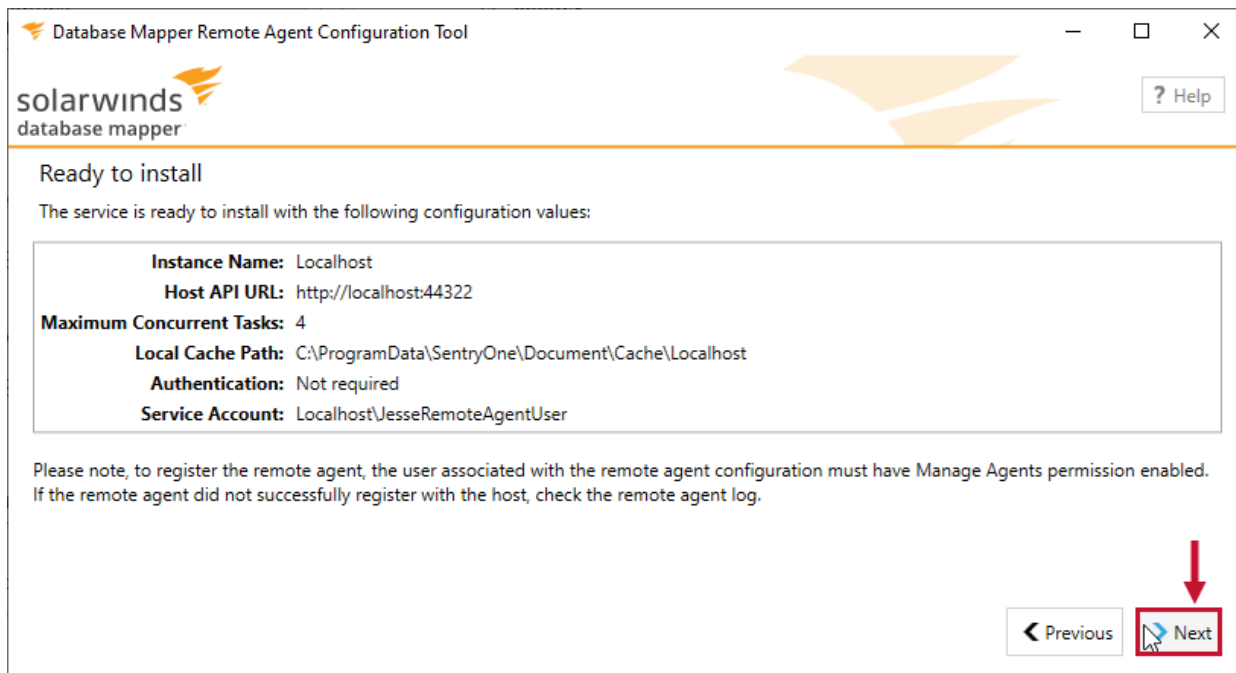


4. Authenticate the account with the target host. Sign in with your SentryOne account or use the **Create Account** option to sign up for an account.

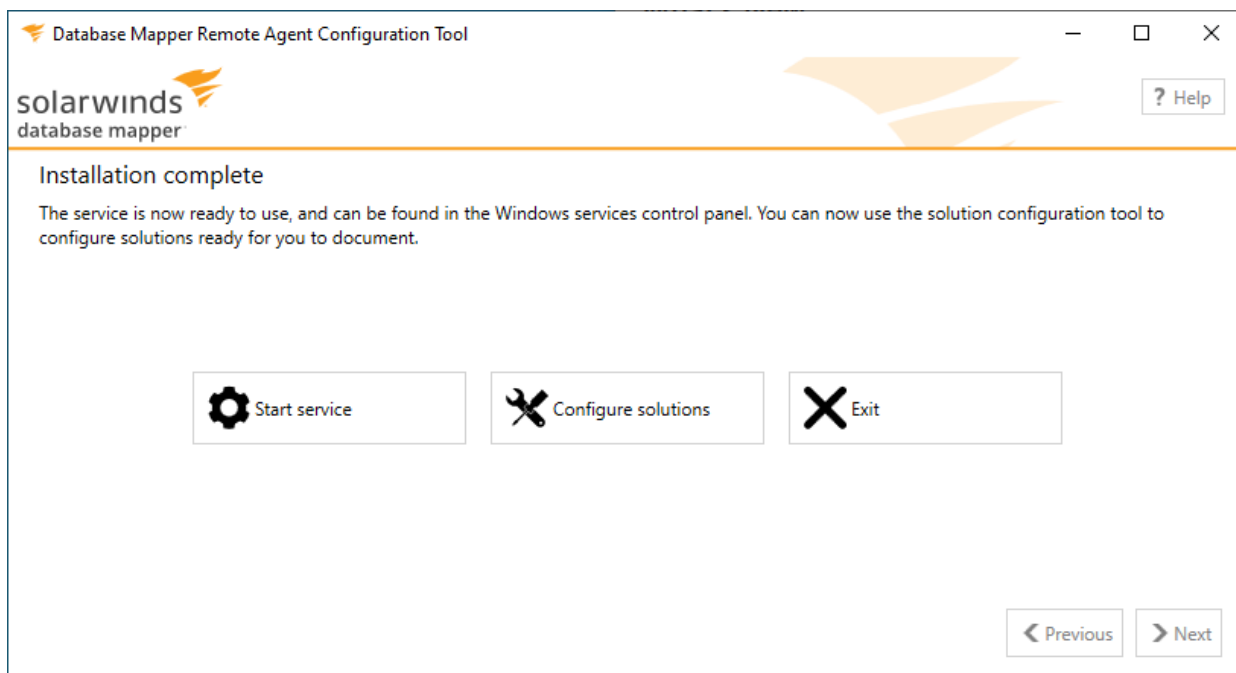
**Important:** Step 4 only applies to the cloud version of Database Mapper, not **Database Mapper Software**.



5. You're now ready to install the remote agent with the configuration values you just set. Select **Next** to start the process.



6. When the installation is complete, you'll have options to 1) **Start service**, 2) **Configure solutions**, or 3) **Exit**.



Option	Description
<b>Start Service</b>	Select <b>Start Service</b> to activate the remote agent on your machine.



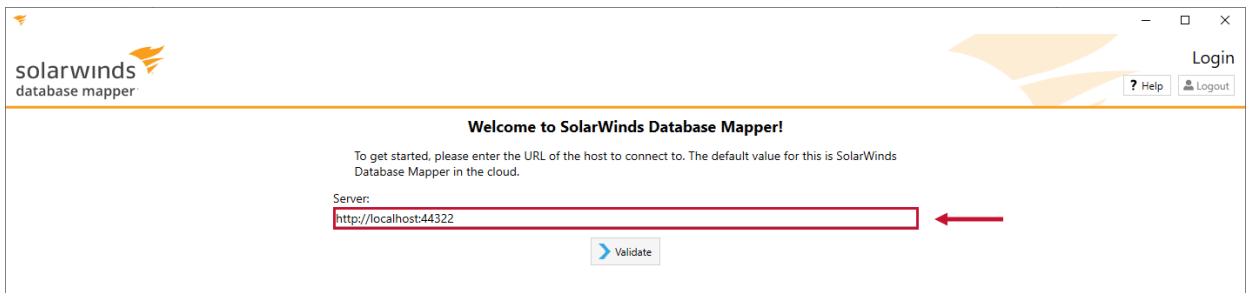
Option	Description
<b>Configure Solutions</b>	Select <b>Configure Solutions</b> to open the Database Mapper configuration tool. Use the Database Mapper configuration tool to <a href="#">configure solutions</a> for your environment. Add Solutions and Solution items with the configuration tool in the same way as the Database Mapper Client. For full instructions on adding solutions and solution items, see <a href="#">Adding Solutions</a> and <a href="#">Adding Solution items</a> .
<b>Exit</b>	Closes the Database Mapper Remote Agent Configuration tool.

## Launching

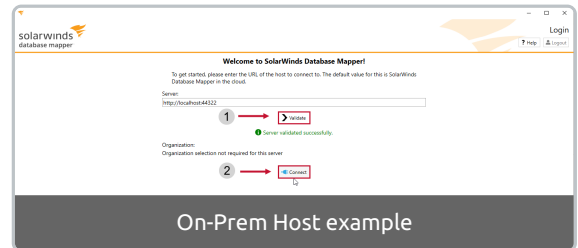
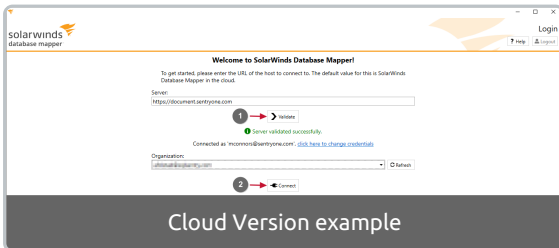
**⚠ Important:** If you are using the cloud version of Database Mapper, step 1 is required. If you are using the self-hosted software version, you can close this screen and continue to step 2.

1. When the **Database Mapper Solution Configuration Tool** first launches, there is a browser pop up screen that asks you to log in to your SentryOne account.

2. The **Welcome to Database Mapper!** screen appears. If you didn't log in, you may see a **Credentials are required for this server** error message for the default server. Accept the default **Server** if it is correct (the cloud version is <https://document.sentryone.com>), or enter the URL of your on-premises host.



3. Select **Validate** to test the connection to the specified **Server**. Once the validate is successful, select **Connect**.



**Note:** If you belong to more than one Organization, please select the correct one from the drop-down list. The drop-down list only appears if there are multiple organizations associated with your account.

4. Select the **Start** button on the **Welcome!** screen to add your first solution.

Welcome!

# solarwinds database mapper

SolarWinds Database Mapper is a cloud based documentation and analysis tool that brings together metadata from various sources in order to produce documentation from that metadata as well as analyze the dependencies that exist in your BI Stack.

In order to organize the metadata into logical groups, SolarWinds Database Mapper uses solutions as logical containers for the metadata sources.

This wizard will help you get started in setting up your first solution.



[Additional Information](#): See the [Database Mapper Configuring Solutions](#) article to continue adding your first solution.