



Installing Database Mapper Software

Last Modified on 27 October 2021

 **Update:** SentryOne Document is now SolarWinds Database Mapper (DMR). See the [Database Mapper product page](#) to learn more about features and licensing. Want to explore Database Mapper? An [interactive demo environment](#) is available without any signup requirements.

Introduction

Database Mapper Software is an on-premises, browser-based option for documenting your data estate. This product is a replacement for the [DOC xPress](#) product and is the self-hosted version of [Database Mapper cloud](#).

 **Important:** If you are using the cloud version of **Database Mapper** at <https://document.sentryone.com/>, this article is not applicable to you.

System Requirements

- [Database Mapper System Requirements](#)

Additional Permissions

This user (or the account you change it to) must have **read/write access** to:

- **C:\Program Files (x86)\SentryOne\SentryOne Document** (or your custom installation directory)
- **C:\Windows\Temp**
- **C:\ProgramData\SentryOne\Document_blobStorage**

If you are using Windows authentication to access the Database Mapper database, the user account must:

1. Exist as a login account on the database server
2. Have access to the Database Mapper database
3. Be added to the **db_datareader**, **db_datawriter**, and **db_ddladmin** roles on the Database Mapper database

 **Note:** The **Database Mapper Software** installer grants the required access to the SentryOneDocument database for the *NETWORK SERVICE* account.

Installation Instructions

Where to Install

Database Mapper Software supports both single-server and multi-server setups. There are additional steps needed multi-server configurations.

[Additional Information](#): See the blog post [A New, On-Premises Approach to Documentation and Data Lineage: Database Mapper Software](#) for details about the steps needed for multiple-server setup.

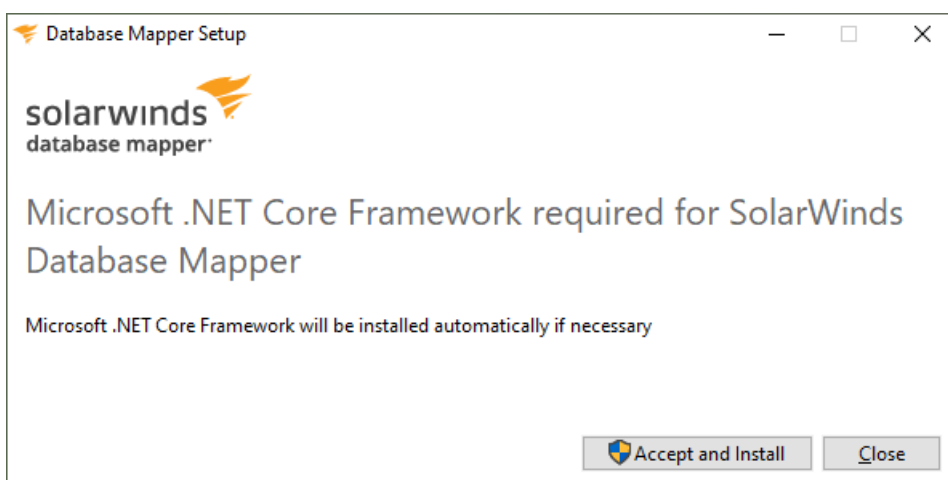
There are two install files for **Database Mapper Software**:

1. **SolarWinds.DatabaseMapper.Setup..msi** is the file used to install **Database Mapper Software** on premises as shown in the steps below. It is the web client software.
2. **SolarWinds-DatabaseMapper-RemoteAgent.msi** is the file used to install the **Database Mapper Remote Agent and Configuration Tool**. This file should be installed after the **SolarWinds.DatabaseMapper.Setup..msi** installation is complete (as described below). This does not need to be installed on the same server as the web client software. It can be installed on a web server, database server, or other server entirely (as long as it has the needed access to both the web server hosting the Database Mapper web client and the database server hosting the Database Mapper database).

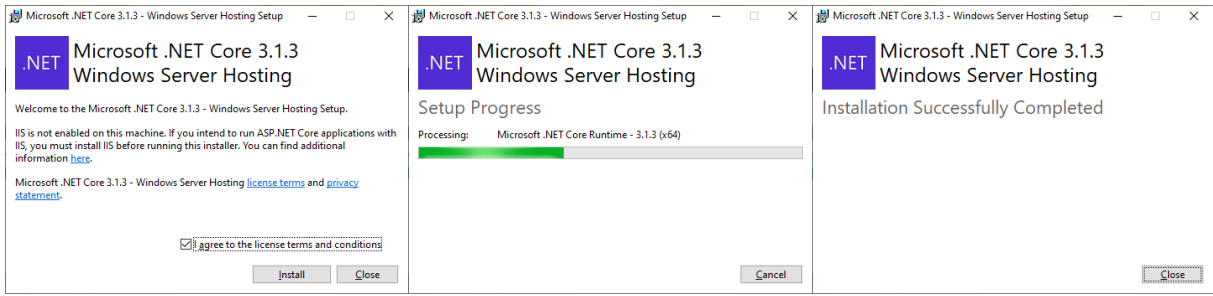
.NET Core Framework and Windows Hosting Services

The first part of the installation process ensures that you have the [Microsoft .NET Core Framework](#) required for **Database Mapper Software**. It installs Windows Server Hosting (if necessary).

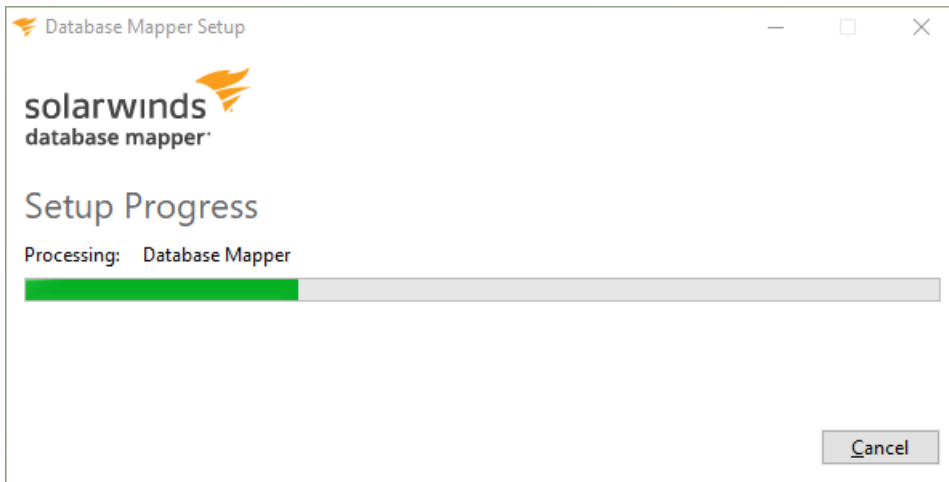
1. Execute **SolarWinds-DatabaseMapper-Host-.exe** on the machine where you want to install the web client to get started.
2. Select **Accept and Install** to continue.



3. You may need to install **Windows Server Hosting** (if so, you'll see a series of popups similar to the ones below). Select the box next to **I agree to the license terms and conditions**, then select **Install**, wait for the installation to complete, and then select **Close**.

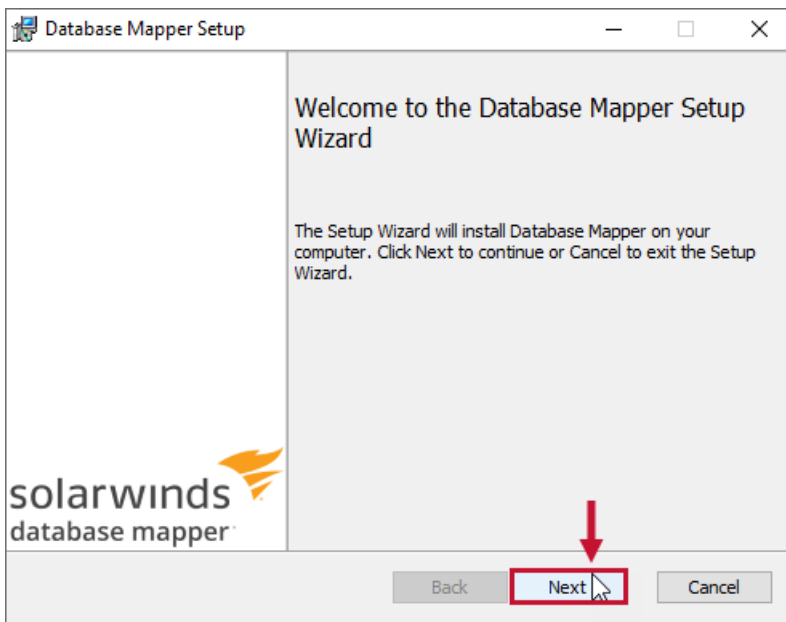


4. The **Setup Progress** window will remain open while the installation continues.

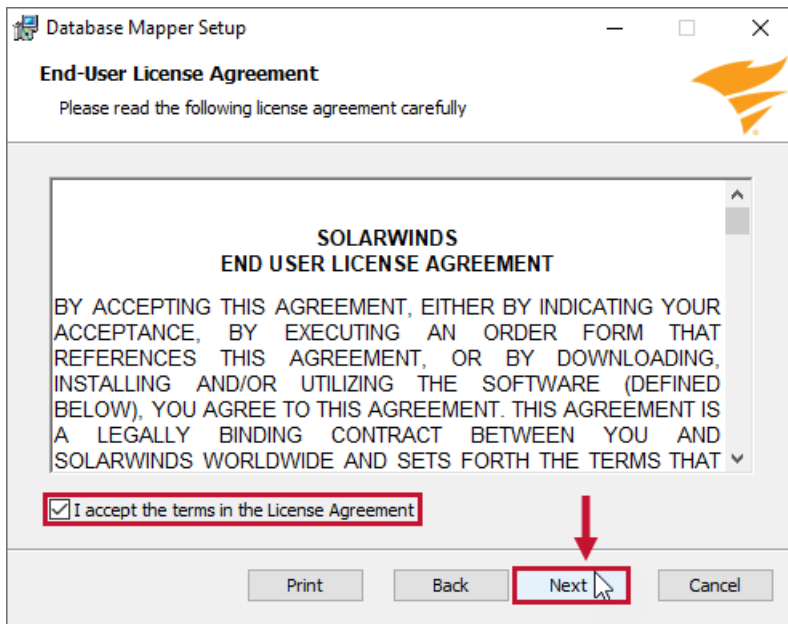


Database Mapper Setup

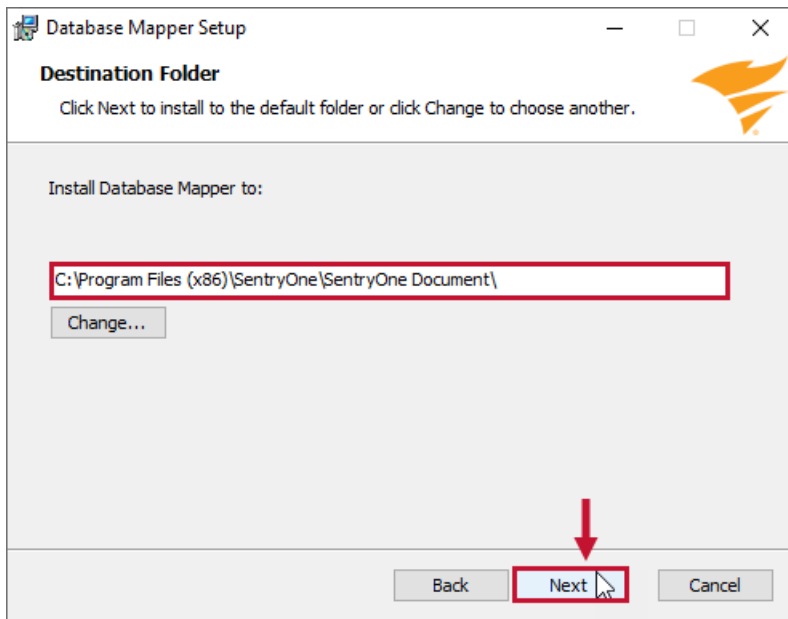
1. Select **Next** on the **Database Mapper Setup** screen.



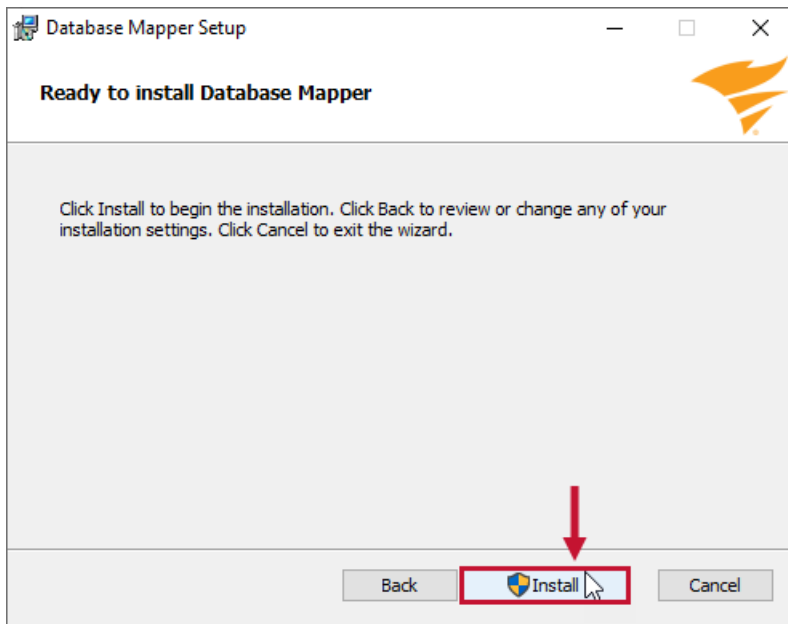
2. Select the box next to **I accept the terms in the License Agreement**, then select **Next**.



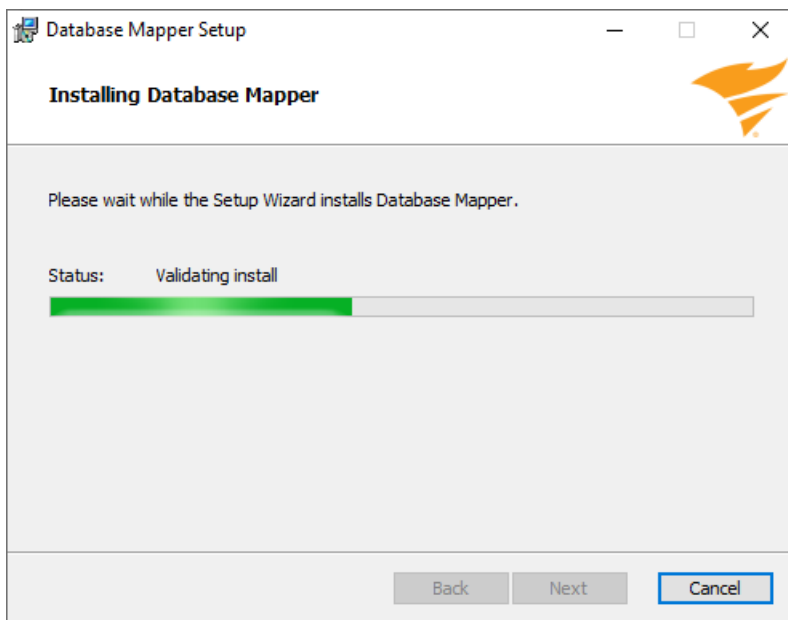
3. Accept the default destination folder for installation, or use **Change** to specify a non-default location, then select **Next**.



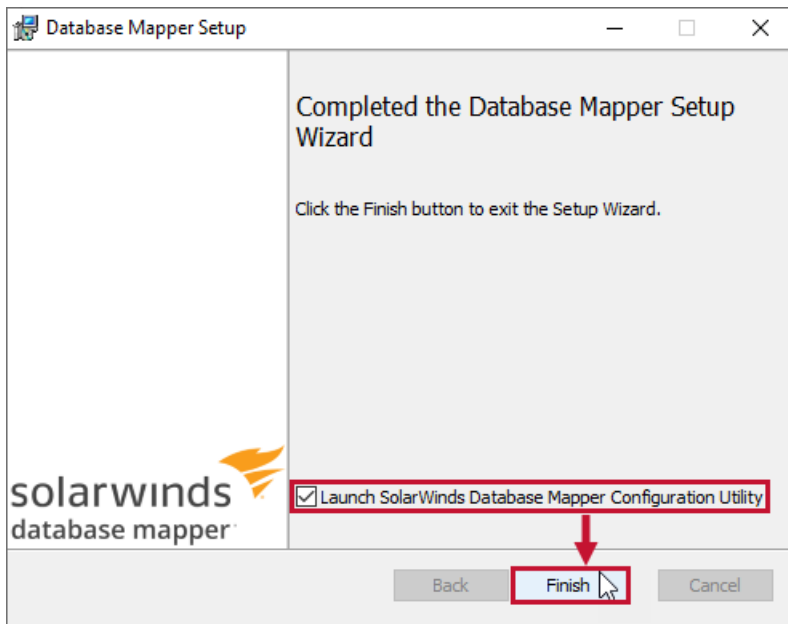
4. Select **Install** to begin the installation with the configured settings. You can select **Back** to change any settings or select **Cancel** to exit the process without installing Database Mapper.



5. The installation process will proceed.



6. The web client for Database Mapper has been installed. Select **Finish** to complete the process, and launch the [Database Mapper Configuration Utility](#).



What's next?

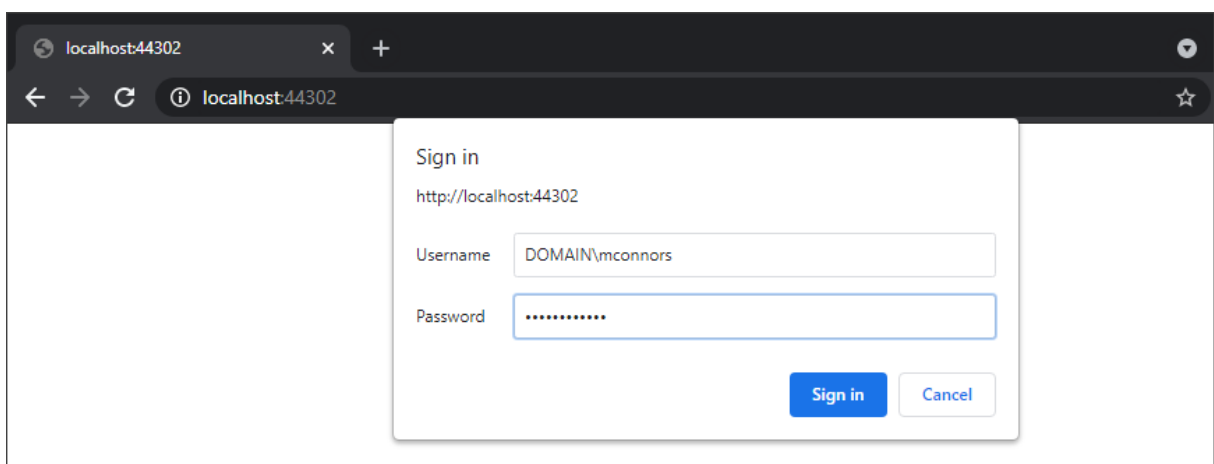
Using the Database Mapper Configuration Utility

Use the [Database Mapper Configuration Utility](#) to configure your Database Mapper software connection.

Opening Database Mapper

Open Database Mapper in your browser.

1. Navigate to your **server:port** (In this example, it is **http://localhost:44302**)



2. Log in using your Windows credentials. **Note:** You may need to use the format **DOMAIN\User name** (depending on your environment).
3. Enter your **Username** and **Password** on the second **Sign in** screen for *port 44322*.

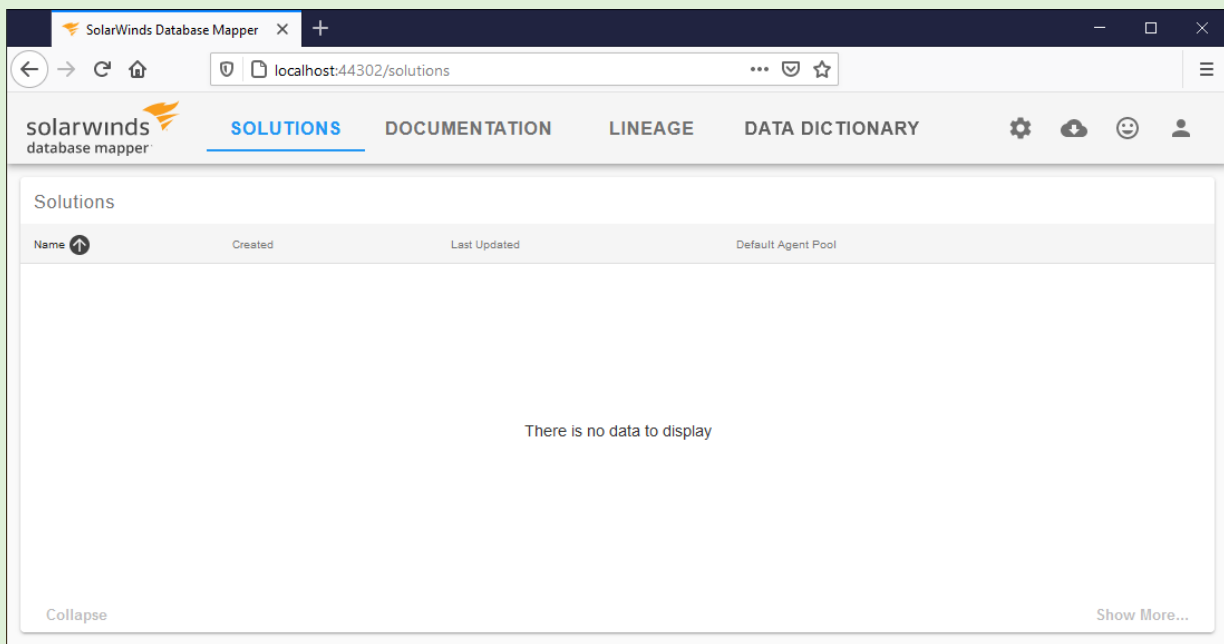
Sign in

http://localhost:44322

Username

Password

Success: The self-hosted Database Mapper application is ready for you to begin.



Note: There's not much to see at this point. You'll need to [configure a solution](#) and generate some documentation to see the real magic of Database Mapper.

Installing Database Mapper Remote Agent and Configuration Tool

See the [Installing Remote Agents](#) and [Remote Agents](#) articles for more information and step-by-step instructions.

Updating IIS Binding Information

See the [Database Mapper Software IIS Bindings](#) article if you need to update the IIS binding **Type**, **IP address**, **Port**, or **Host name**.

Using Database Mapper

After you [install the Database Mapper Remote Agent and Configuration Tool](#), you can proceed to [configure your first solution](#), then continue to the [Using Database Mapper](#) section for guides to using all the features.

Upgrading


To upgrade **Database Mapper Software**, run the latest **DatabaseMapperSetup.msi** file and follow the installation instructions above. The defaults for the **server** and **host** names may have changed since your previous installation. Please verify those values are correct for your configuration when upgrading.

No additional configuration (re-adding) is required for the remote agents when upgrading Database Mapper Software. If an update is available for the remote agent software, that will need to be applied separately. To **update** a remote agent, see the [Database Mapper Remote Agents](#) article.

 **Download:** Get the latest **SolarWinds.DatabaseMapper.Setup..msi** from the [SolarWinds Customer Portal](#).

Uninstalling

Uninstall **Database Mapper** through **Add or remove programs** in Windows.

 **Note:** This does not remove the **Database Mapper Remote Agent** software, which must be uninstalled separately. To **delete** a remote agent, see the [Database Mapper Remote Agents](#) article.

Troubleshooting

 **Additional Information:** See the [Database Mapper Troubleshooting](#) article for information about troubleshooting.