

Task Factory Common Errors

Last Modified on 16 September 2021

🔔 Task Factory users running version 2020.1.4 or older (released prior to May 27, 2020): **There's an important Task Factory update.** Please visit [here](#) for more details.

Through the course of [installing](#) or [upgrading Task Factory](#), you can run into some common component errors in your packages. This article provides an overview for these common errors and ways to troubleshoot them.

Note: SolarWinds recommends [testing your Task Factory upgrade](#) before upgrading all of your environments.

SSIS.ReplacementTask Error

You may run into the **SSIS.ReplacementTask** error when you try to run a package after installing a new version of Task Factory.

Note: The **SSIS.ReplacementTask** error may display as follows:

TITLE: Microsoft Visual Studio

The task with the name "TF Properties Task" and the creation name "SSIS.ReplacementTask" is not registered for use on this computer.

Contact Information:

File Properties Task;Pragmatic Works, Inc; Task Factory (c) 2009 - 2014 Pragmatic Works, Inc;
<http://www.pragmaticworks.com;support@pragmaticworks.com>

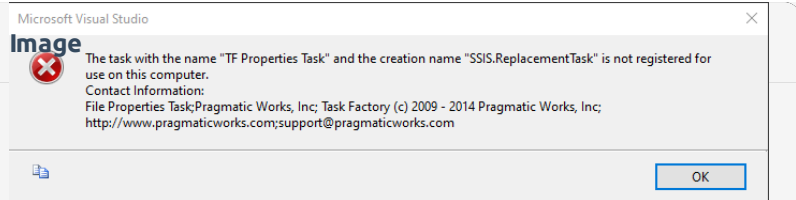
Symptoms

The **SSIS.ReplacementTask** error has the following symptoms:

Symptom	Image
Box icon on your Task Factory component or task	
Your package can't be executed or edited	

Symptom

You can't see the data in your Task Factory components.



⚠ Warning: If your package(s) exhibits any of these symptoms, **DO NOT** try to run the package, or open any of its components. It's recommended to delete this package if you have a saved copy or backup of the package.

⚠ Important: SolarWinds recommends having backups of your packages, and storing these backups in a safe and accessible location.

Cause

The **SSIS.ReplacementTask** error occurs when SSIS is looking for your Task Factory components and can't find them (your component(s) may look online for assemblies, which can take a while). When SSIS can't find your Task Factory components, it replaces the components with generic components, resulting in the **SSIS.ReplacementTask** error.

You may run into the **SSISReplacementTask** error if you've done the following:

- You've opened a package that was developed on an higher version of Task Factory in an older version. For example, you developed the package in version 2020.0, and opened it in version 2019.
- You're using the same version of Task Factory that was used to develop the package, but you are targeting a different SQL Server version. For example, you're package was created targeting SQL Server 2017, and when you've opened the package on your current machine, the package is targeting SQL Server 2019.

Solution

To fix the **SSISReplacementTask** error in your package(s), you can take one of the following actions:

- Run the package on the version of Task Factory where it was originally created and delete the corrupted package.
- Download the version of Task Factory where the package was developed and ensure that this version is installed across all of your machines.
- Use the version of Task Factory where the package is working across all of your environments.
- Ensure the package is targeting the version of SQL Server that it was targeting during its development.

Warning: You must use the same version of Task Factory across all your environments (dev, production, qa, etc.) to ensure optimal performance of Task Factory components.

Note: If you need any assistance solving this error, reach out to support.sentryone.com.

Task Factory Items are not showing up in the SSIS Toolbox

Symptoms

Recently downloaded Task Factory components are not displaying in the SSIS Toolbox.

Cause

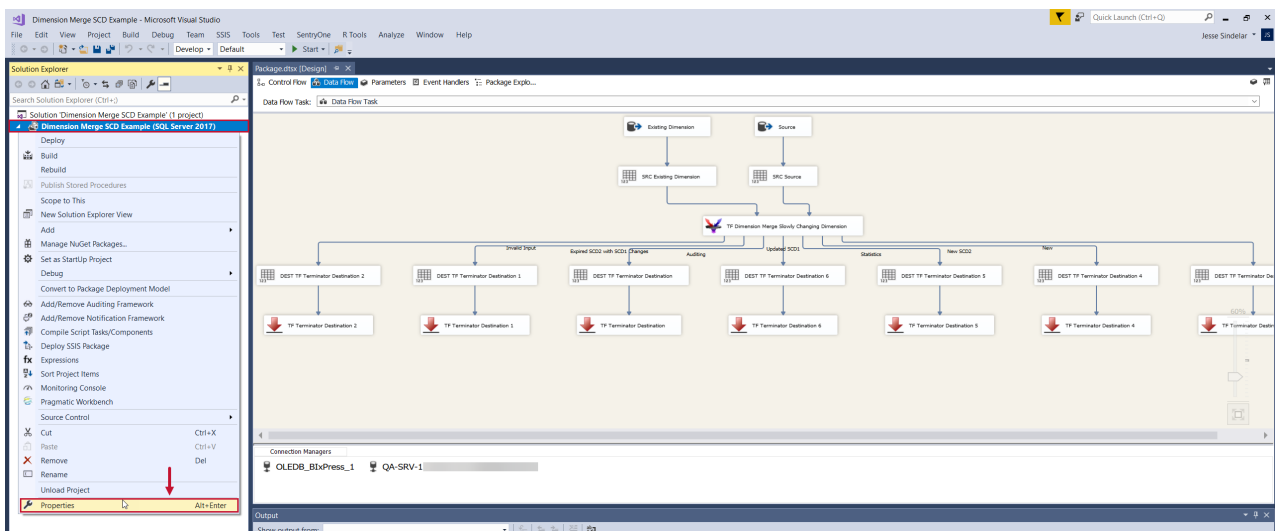
Beginning with SQL Server Data Tools 2016, backwards compatibility was added for building and editing packages for previous versions of SQL Server Integration Services. Opening your package in a newer version of Visual Studio may cause the package to target a version of SSIS that does not have Task Factory support. For example, if you custom installed Task Factory to support only SSIS 2014, and then you tried to work on a project that is targeting SSIS 2012, the Task Factory items won't display in your SSIS toolbox.

Solution

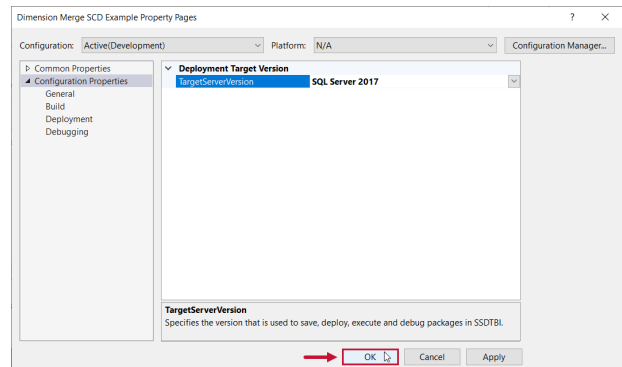
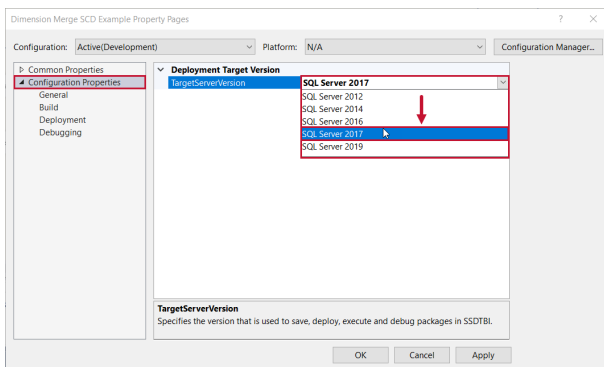
To ensure that the Task Factory components display in the SSIS toolbox, you can uninstall your current version of Task Factory, then reinstall Task Factory (making sure to select the versions of SSIS that you plan to work with).

You can also change the **TargetServerVersion** of the SSIS project to match your installed version of Task Factory. To do this, complete the following steps:

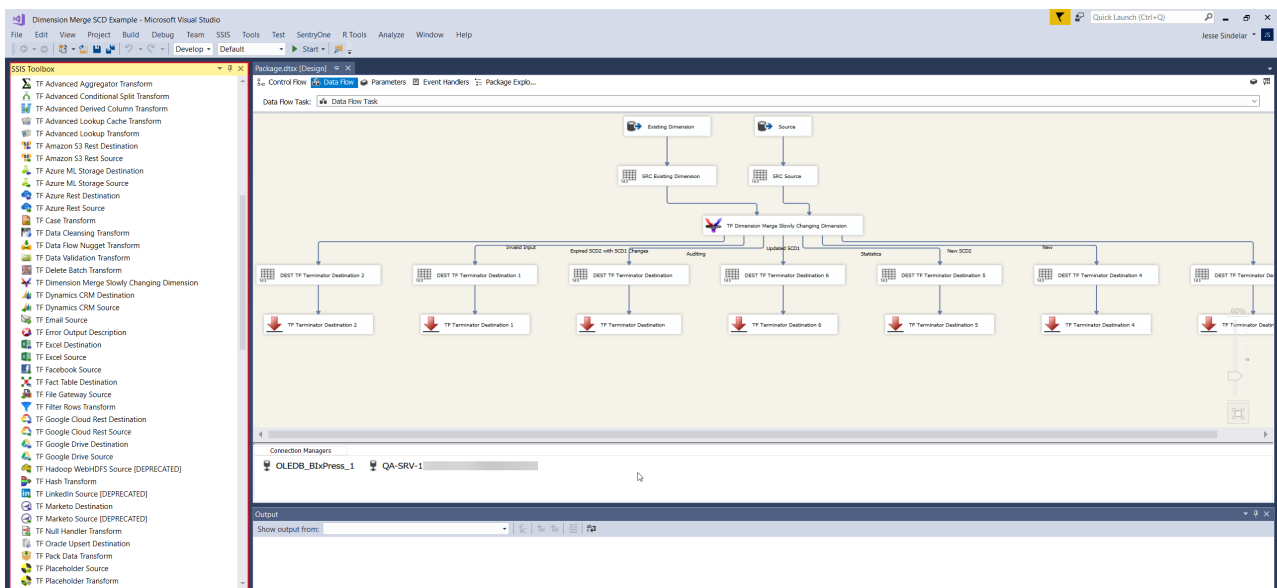
1. Open your Visual Studio project. Right click your **Project** in the Solution Explorer window, then select **Properties** to open the **Property Page** window.



2. Select **Configuration Properties**, then select the desired **TargetServerVersion** from the drop-down list. Select **OK** to save your changes.



3. Save and close your package. Re-open the package to display the Task Factory components.



Support Articles

See the following articles on the Support website:

[Advanced Execute Package Object Reference Error using In Process Execution](#)

When you execute the package you receive an *"Object was not set to an instance of an object"* error.

[Error with Temporary Directory](#)

Error: file 'C:\Windows\TEMP\tb2igkdr.0.vb' could not be found

[Getting a Login Failed Error After Deploying a Package to a Server](#)

You built a package using a task that requires a login. You are able to run this package in Visual Studio without error however, when you deploy the package to the server you get a *Login Failed* or *Authentication Failure* error thrown.

Oracle Upsert Destination – Could not delete temporary table

If an error occurs in Oracle while the Oracle Upsert Destination is writing to the database, the component will attempt to rollback all changes and remove temporary tables that were in use. This can cause an illegal ROLLBACK attempt to occur if Oracle believes the component is attempting to write to the temporary table while the rollback attempt is made. Typically, the error will present itself in SSIS as:

[TF Oracle Upsert Destination [29]] Error: Oracle.DataAccess.Client.OracleException ORA-00600: internal error code, arguments: [4513], [130], [1]...

or

[TF Oracle Upsert Destination [29]] Error: Oracle.DataAccess.Client.OracleException ORA-24795: Illegal ROLLBACK attempt made at...

SalesForce Source Failed to Execute

Failed to execute query successfully, error message: *INVALID_FIELD: (Name of custom column), ^ ERROR at Row: (row location number): Column (Column Location number) No such column '(Name of Column)' on entity '(name of object)'. If you are attempting to use a custom field, be sure to append the '__c' after the custom field name. Please reference your WSDL or the describe call for the appropriate names.*

This error message is associated with custom columns of the Salesforce Object being drawn from.

SalesForce Source Error

At execution of a package containing a Salesforce Source, the user sees the package fail and the following error detailed in the Execution Results/Progress tab:

[TF Salesforce Source [2]] Error: The "TF Salesforce Source" failed because truncation occurred, and the truncation row disposition on "TF Salesforce Source.Outputs[SalesForce Data].Columns[Name]" specifies failure on truncation. A truncation error occurred on the specified object of the specified component.

SFTP Task Could Not Authenticate

[ExecuteTask Failed:] Information: Could not authenticate user [Username].

SFTP Task Connection Attempt Failed

ExecuteTask Failed:] Error: A connection attempt failed because the connected party did not properly respond after a period of time, or established connection failed because connected host has failed to respond 129.130.13.3:49088

SFTP Task File Doesn't Exist on the Server

[ExecuteTask Failed:] Error: File /(SFTPFilePath) doesn't exist on the server.

SFTP How to Generate a Log File

When the Secure FTP Task does not work as expected, it may be necessary to have the task generate a log to help identify where the issue is occurring.

SFTP Task No Error

SFTP Task is not performing its designated function (i.e. Download File from Server, Upload File to server etc.), but it's showing as a success despite there being no sign the task actually performed the function requested.

Task Factory Deadlocking

On occasion when using some of the Task Factory destinations which are working in parallel to write to the same target table, deadlocking may occur. The error may look something like this, "*Your transaction (process ID #52) was deadlocked on {lock | communication buffer | thread} resources with another process and has been chosen as the deadlock victim. Rerun your transaction.*" This could affect the Upsert Destination, Delete Batch Transform, and the Update Batch transform.

Underlying Connection was Closed

When you're trying to connect to an API or other outside connection like Salesforce, SharePoint, Dynamics CRM, you may encounter this error: "*The underlying connection was closed: An unexpected error occurred on a send*". This error is typically due to a TLS version mismatch between the requesting party (SSIS) and receiving party (what you are connecting to).