


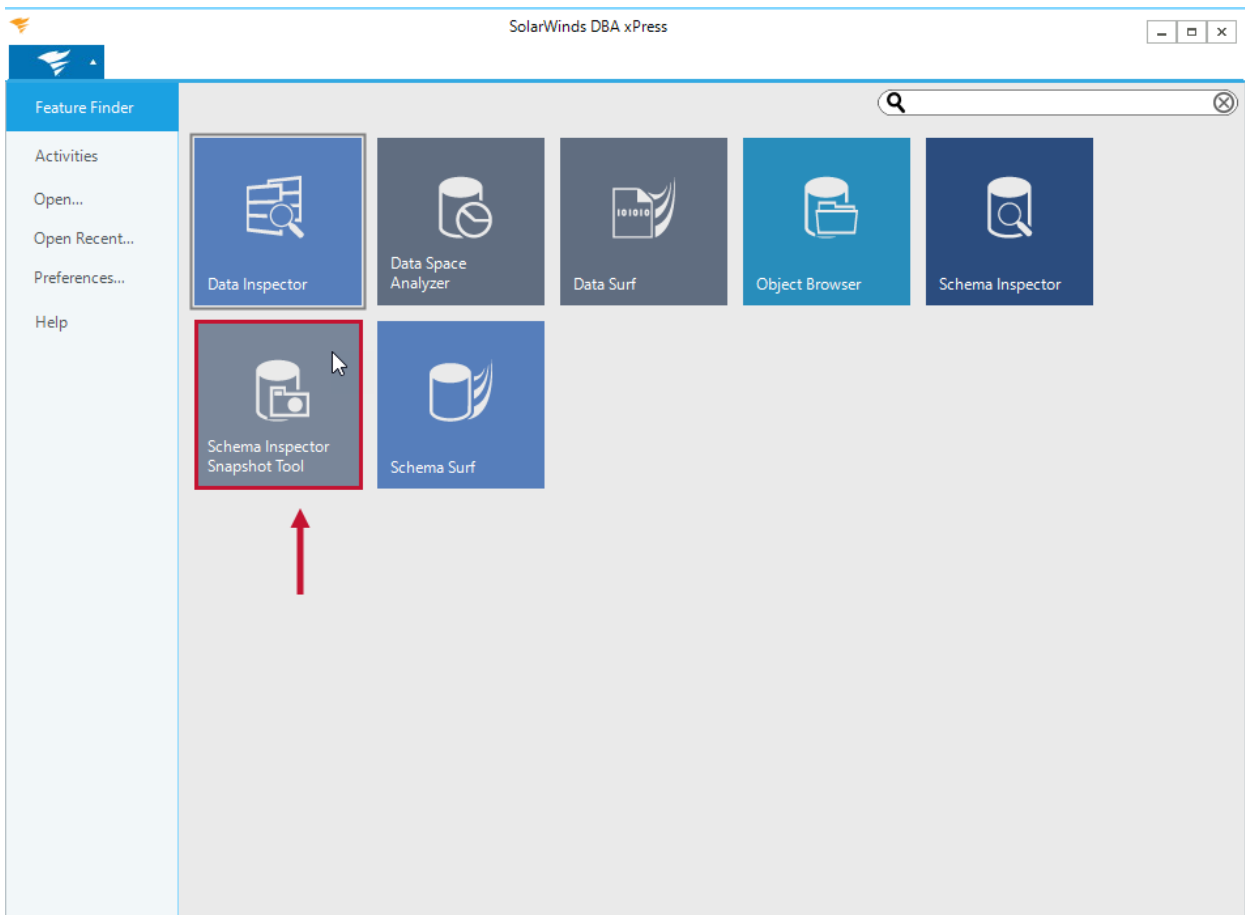
DBA xPress Schema Inspector Snapshot Tool

Last Modified on 04 June 2021

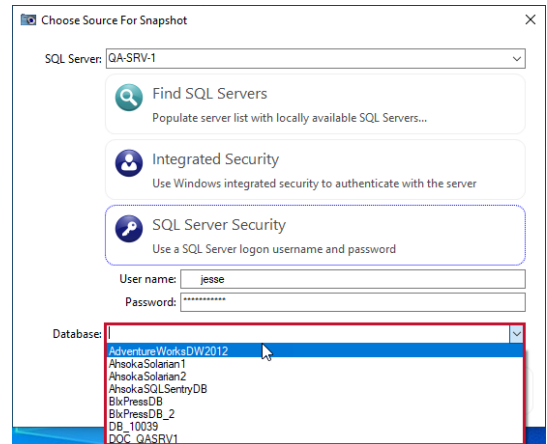
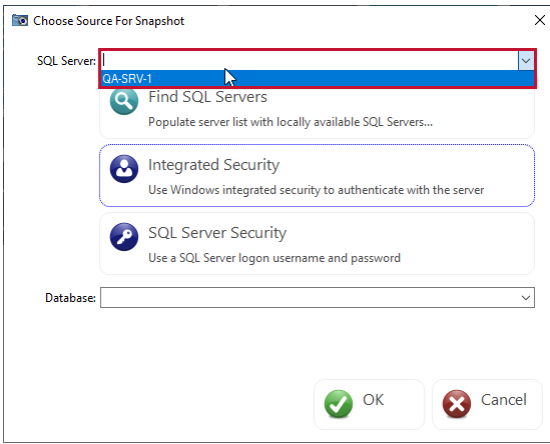
| Icon | Description |
|---|---|
|  | The Schema Inspector Snapshot Tool creates point-in-time copies of database objects and saves them as an XML file. Compare snapshots to other snapshots or live database comparisons and synchronize schema elements of SQL Server databases using the Schema Inspector. |

Using the Schema Inspector Snapshot Tool

1. Select the **Schema Inspector Snapshot Tool** in the SentryOne Workbench to open the **Choose Source For Snapshot** window.



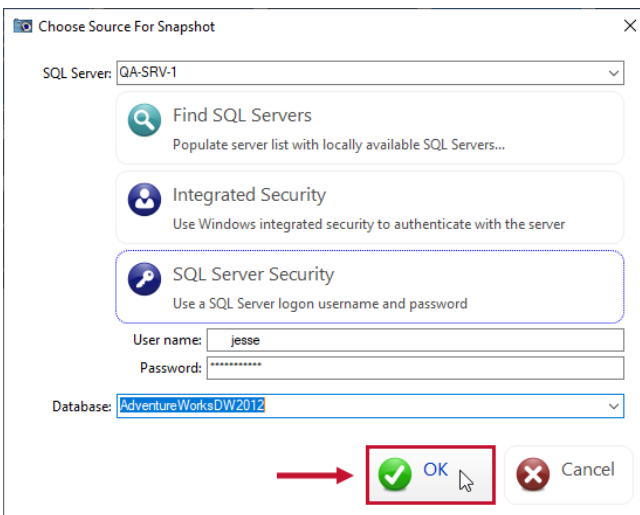
2. Enter a SQL Server connection or select a previous connection from the drop down list. Enter your connection credentials, then select a database for the comparison.



Note: Schema Inspector Snapshot Tool automatically starts a search for local servers when it starts. Select **Find Local Servers** if you know a new server has appeared since the application started, or the dialog opens before the initial search completes.

Note: Selecting **SQL Server Security** gives you the option to enter a username and password.

3. Select **Ok** to begin loading the data base for the snapshot.



Loading database for snapshot...

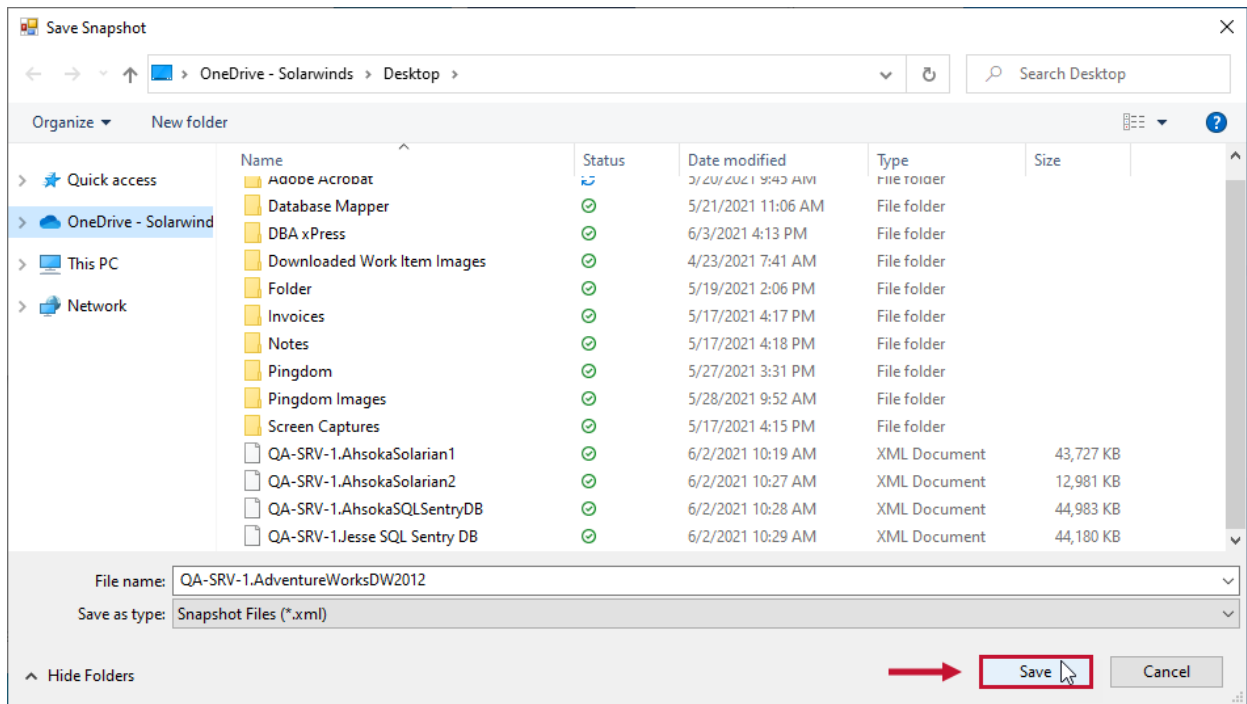
26%

Reading: Views

Cancel

Note: Once the selected database has loaded, the **Save Snapshot** window displays.

4. Enter a meaningful name for the snapshot, then select **OK** to save your snapshot.



Success: You have saved your snapshot!

