

SentryOne Document Generating Documentation

Last Modified on 25 May 2021

Update: SentryOne Document is now SolarWinds Database Mapper (DMR). See the [Database Mapper product page](#) to learn more about features and licensing. Want to explore Database Mapper? An [interactive demo environment](#) is available without any signup requirements.

After you have successfully installed the Database Mapper remote agent and configured a solution (see the [Getting Started](#) article for instructions), you can use Database Mapper to generate documentation. Generate documentation for your solution by completing the following steps:

1. Log into Database Mapper, then select **Solutions** to open the **Solutions** dashboard.

Name	Created	Last Updated	Default Agent Pool
63338 #1	2020-03-26 08:17 AM	2021-03-30 12:41 PM	Adrian's Pool
AH - 66543 Testing	2020-11-30 06:36 AM	2020-11-30 06:36 AM	Default
AH - Smoke Test	2021-01-29 05:06 AM	2021-01-29 05:06 AM	Adrian's Pool
Adrian's SuperSimpleDB	2021-03-29 06:56 AM	2021-03-29 07:11 AM	Adrian's Pool
AdventureWorks Production Environment	2021-01-08 06:52 AM	2021-01-08 06:52 AM	Adrian's Pool
AdventureWorks QA Environment	2021-01-08 06:51 AM	2021-01-08 06:52 AM	Adrian's Pool
Azure Data Factory	2020-01-27 09:41 AM	2020-01-27 09:41 AM	Default
Melissa Articles Report Excel	2019-08-15 03:07 PM	2019-08-15 04:03 PM	Default
MelissaS1DSolution	2019-07-15 12:28 PM	2019-10-11 02:47 PM	Default

2. Select the **Start Snapshot** button for the desired solution, then select **Snapshot** on the Snapshot Configuration window to start your snapshot.

Name	Created	Last Updated	Default Agent Pool
63338 #1	2020-03-26 08:17 AM	2021-03-30 12:41 PM	Adrian's Pool

Snapshot Configuration for "S1DOC_Cloud"

Start Snapshot Immediately

Do you want to request a snapshot to be taken for solution: S1DOC_Cloud?

Use enhanced logging

Schedule Snapshot

Users will need the SentryOne.Document.CommandLine executable to request a snapshot for the S1DOC_Cloud solution.

The SentryOne.Document.CommandLine can be found locally within the remote agent install directory.

Before requesting snapshots for the first time, users must authenticate using the below command:

```
SentryOne.Document.CommandLine.exe auth -t https://s1dhost-dev-001-01-az01w01616.com
```

Once authentication is complete, the following command will request a snapshot for the S1DOC_Cloud solution:

```
SentryOne.Document.CommandLine.exe snapshot -s 13f88a9f-7378-406a-b1e5-a86e97f2e276 -t https://s1dhost-dev-001-01-az01w01616.com -o dba7670-d51c-4e61-b07b-1d5b05a76716
```

SentryOne.Document.CommandLine supports any framework capable of starting an application using command line arguments.

Close

Note: Your Snapshot Request is processed by the remote agent assigned to the solution. The snapshot may take several minutes. View your snapshot progress on the **Task History** page for the selected solution.

Task History Auto refresh

Snapshot for solution 'S1DOC_Cloud' Start Time: 1/13/2020, 02:36 PM

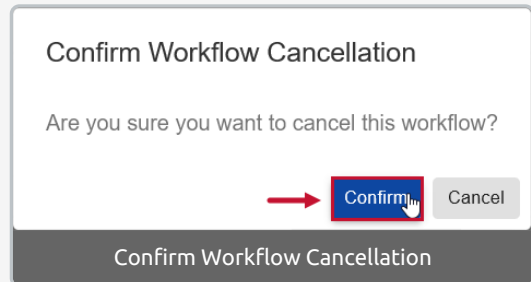
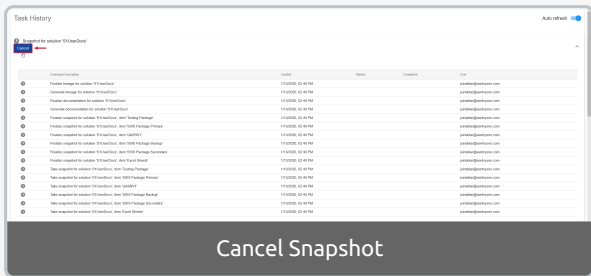
[Cancel](#)

Command Description	Created	Started	Completed	User
Finalize lineage for solution 'S1DOC_Cloud'	1/13/2020, 02:35 PM			jvindelar@sentryone.com
Generate lineage for solution 'S1DOC_Cloud'	1/13/2020, 02:35 PM			jvindelar@sentryone.com
Finalize documentation for solution 'S1DOC_Cloud'	1/13/2020, 02:35 PM			jvindelar@sentryone.com
Generate documentation for solution 'S1DOC_Cloud'	1/13/2020, 02:35 PM			jvindelar@sentryone.com
Finalize snapshot for solution 'S1DOC_Cloud', item 'SSIS Package Secondary'	1/13/2020, 02:35 PM			jvindelar@sentryone.com
Finalize snapshot for solution 'S1DOC_Cloud', item 'SSIS Package Primary'	1/13/2020, 02:35 PM			jvindelar@sentryone.com
Finalize snapshot for solution 'S1DOC_Cloud', item 'Testing Package'	1/13/2020, 02:35 PM			jvindelar@sentryone.com
Finalize snapshot for solution 'S1DOC_Cloud', item 'SSIS Package Backup'	1/13/2020, 02:35 PM			jvindelar@sentryone.com
Finalize snapshot for solution 'S1DOC_Cloud', item 'Excel Sheets'	1/13/2020, 02:35 PM			jvindelar@sentryone.com
Take snapshot for solution 'S1DOC_Cloud', item 'SSIS Package Secondary'	1/13/2020, 02:35 PM	1/13/2020, 02:36 PM	1/13/2020, 02:36 PM	jvindelar@sentryone.com
Take snapshot for solution 'S1DOC_Cloud', item 'SSIS Package Primary'	1/13/2020, 02:35 PM	1/13/2020, 02:36 PM	1/13/2020, 02:37 PM	jvindelar@sentryone.com
Take snapshot for solution 'S1DOC_Cloud', item 'Testing Package'	1/13/2020, 02:35 PM	1/13/2020, 02:37 PM		jvindelar@sentryone.com
Take snapshot for solution 'S1DOC_Cloud', item 'SSIS Package Backup'	1/13/2020, 02:35 PM	1/13/2020, 02:36 PM	1/13/2020, 02:37 PM	jvindelar@sentryone.com
Take snapshot for solution 'S1DOC_Cloud', item 'Excel Sheets'	1/13/2020, 02:35 PM	1/13/2020, 02:36 PM	1/13/2020, 02:37 PM	jvindelar@sentryone.com

Export documentation for solution 'S1DOC_Cloud'
Start Time: 1/7/2020, 09:51 AM Completed Time: 1/7/2020, 09:53 AM

Export documentation for solution 'S1DOC_Cloud'
Start Time: 12/30/2019, 01:24 PM Completed Time: 12/30/2019, 01:25 PM

Note: You can cancel a snapshot for a solution that's pending, or in progress on the solution's **Task History** page. Select **Cancel** to open the **Confirm Workflow Cancellation** window, then select **Confirm** to cancel the snapshot.



Important: The Remote Agent pool assigned to your Solution needs at least one Remote Agent to take a snapshot. If your Remote Agent pool doesn't have an assigned Remote Agent, you are prompted to assign one.

Snapshot Configuration for 'S1DOC_Cloud'

There are no remote agents assigned to the default agent pool for the selected solution. Either assign this solution and its solution items to a pool that has remote agents assigned, or ensure there is at least 1 remote agent assigned to the following pool(s):

(Configure Remote Agents)

- Stand-by Agents

Start Snapshot Immediately

Do you want to request a snapshot to be taken for solution: S1DOC_Cloud?

Use enhanced logging Snapshot

Schedule Snapshot

Users will need the SentryOne.Document.CommandLine executable to request a snapshot for the 'S1DOC_Cloud' solution.

The SentryOne.Document.CommandLine can be found locally within the remote agent install directory.

Before requesting snapshots for the first time, users must authenticate using the below command:

```
SentryOne.Document.CommandLine.exe auth -t https://s1dhost-dev-eus-as.azurewebsites.net
```

Once authentication is complete, the following command will request a snapshot for the S1DOC_Cloud solution:

```
SentryOne.Document.CommandLine.exe snapshot -s 13f88ae9-7378-456a-b8e1-a8e067f52e76 -t https://s1dhost-dev-eus-as.azurewebsites.net -o 68a75679-d1cc-4461-be7b-ad845b476e36
```

SentryOne.Document.CommandLine supports any framework capable of starting an application using command line arguments.

Close

Remote Agent not assigned

LDE32-0218-B667: Jesse Dev 2

Choose which Remote Agent pool you want to be used for this remote agent.


Any snapshots and document generation processes will be sent to selected pool can be performed by this Remote Agent.

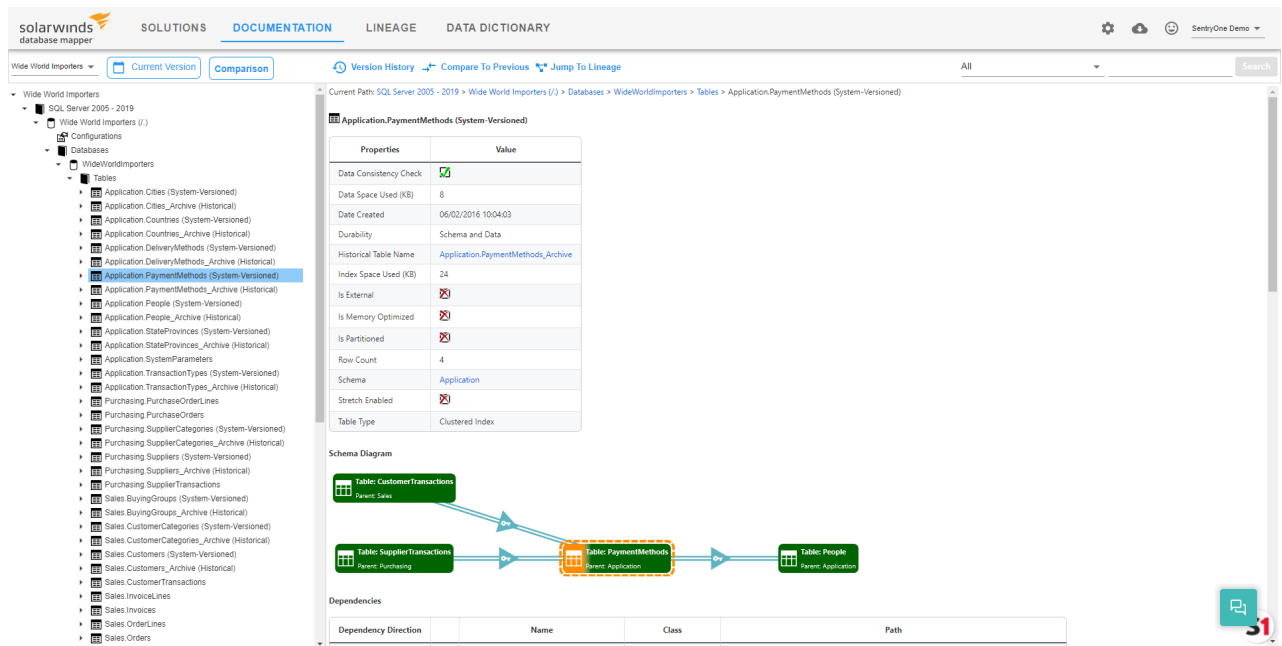
Stand-by Agents

Choose Agent Pool

Change Pool Assignment Cancel

Change Pool Assignment

Once your documentation has generated, you can select  from the Solutions Dashboard to open the Documentation page and drill down into your solution's metadata.



The screenshot shows the SolarWinds Database Mapper interface. The 'DOCUMENTATION' tab is active, displaying a tree view of databases and tables. The selected table is 'Application.PaymentMethods (System-Versioned)'. The main area shows a table of properties and a schema diagram.

Properties	Value
Data Consistency Check	<input checked="" type="checkbox"/>
Data Space Used (KB)	8
Date Created	06/02/2016 10:04:03
Durability	Schema and Data
Historical Table Name	Application.PaymentMethods_Archive
Index Space Used (KB)	24
Is External	<input checked="" type="checkbox"/>
Is Memory Optimized	<input checked="" type="checkbox"/>
Is Partitioned	<input checked="" type="checkbox"/>
Row Count	4
Schema	Application
Stretch Enabled	<input checked="" type="checkbox"/>
Table Type	Clustered Index

Schema Diagram

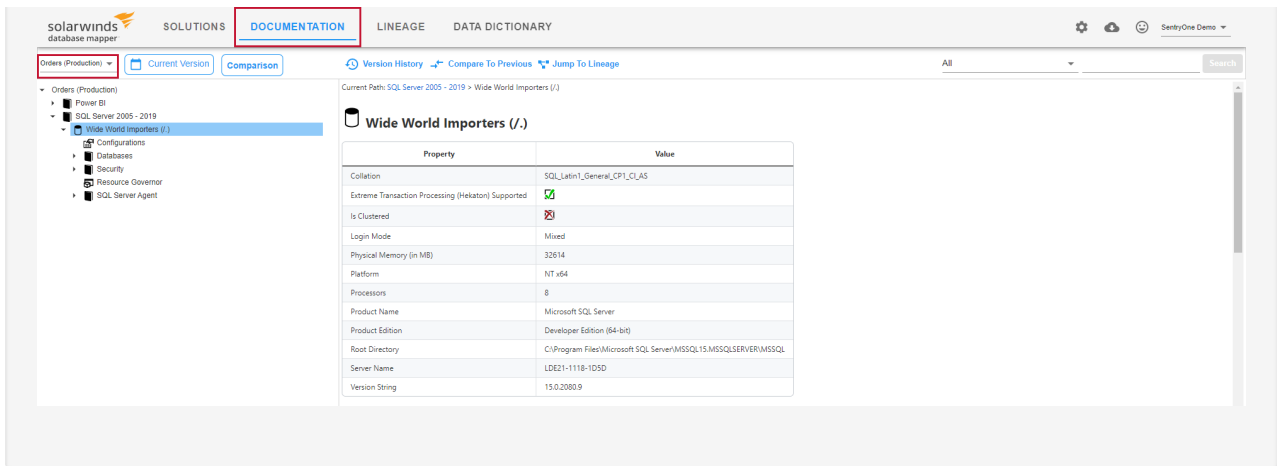
```

graph LR
    Table_CustomerTransactions[Table: CustomerTransactions  
Parent: Sales] --> Table_PaymentMethods[Table: PaymentMethods  
Parent: Application]
    Table_SupplierTransactions[Table: SupplierTransactions  
Parent: Purchasing] --> Table_PaymentMethods
    Table_PaymentMethods --> Table_People[Table: People  
Parent: Application]
  
```

Dependencies

Dependency Direction	Name	Class	Path
----------------------	------	-------	------

Note: You can also select the **Documentation** tab, then select a Solution from the drop-down list to display documentation.



For more information about the Documentation page in Database Mapper, see the [Database Mapper Solutions Dashboard](#) article.