

Task Factory System Requirements

Last Modified on 28 September 2020

Download: For more information about Task Factory pricing or downloading a trial, see the [Task Factory product page](#).

Note: For a comprehensive view of the updates to SentryOne Task Factory, see the [Release Notes](#).

Hardware Requirements

Component	Minimum Requirements	Recommended Requirements
Memory	4 GB	At least 8 GB
Processor Speed	1.4 GHz	2.0 GHz or higher
Process Type	Not Applicable	<ul style="list-style-type: none">• AMD Opteron• AMD Athlon 64• Intel Xeon with Intel EM64T support• Intel Pentium IV with EM64T support

Note: Hardware requirements can vary based on workloads and other processes.

Software Requirements

The following is required to use Task Factory:

- Microsoft Visual Studio
- [Microsoft .NET Framework 4.5](#)
- [SQL Server Integration Services](#) 2012, 2014, 2016, 2017, or 2019.
- [SQL Server Data Tools \(SSDT\)](#) 2012, 2014, 2016 (for Visual Studio 2015), 2017 (for Visual Studio 2015 or 2017), or Visual Studio 2019.

Note:

- SSDT is a development environment requirement, however, it's not required on a server installation.
- Task Factory works on any edition of Microsoft Visual Studio (Community, Professional, or Enterprise).

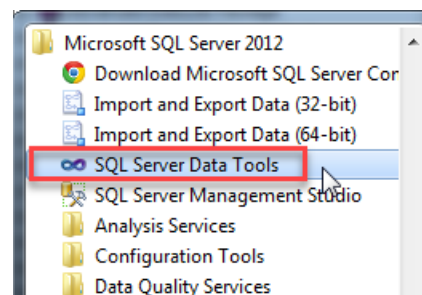
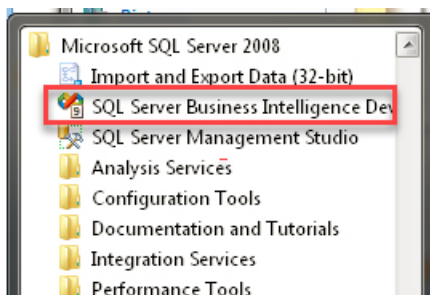
The following Windows Versions are supported by Task Factory:

64-bit (x64) Operating Systems:	32-bit (x86) Operating Systems:
Windows Server 2012	Windows Server 2012
Windows Server 2016	Windows 7
Windows Server 2019	Windows 8
Windows 7	Windows 10
Windows 8	
Windows 10	

Verifying SSDT or BIDS Installation

Complete the following steps to see if SSDT or BIDS is installed:

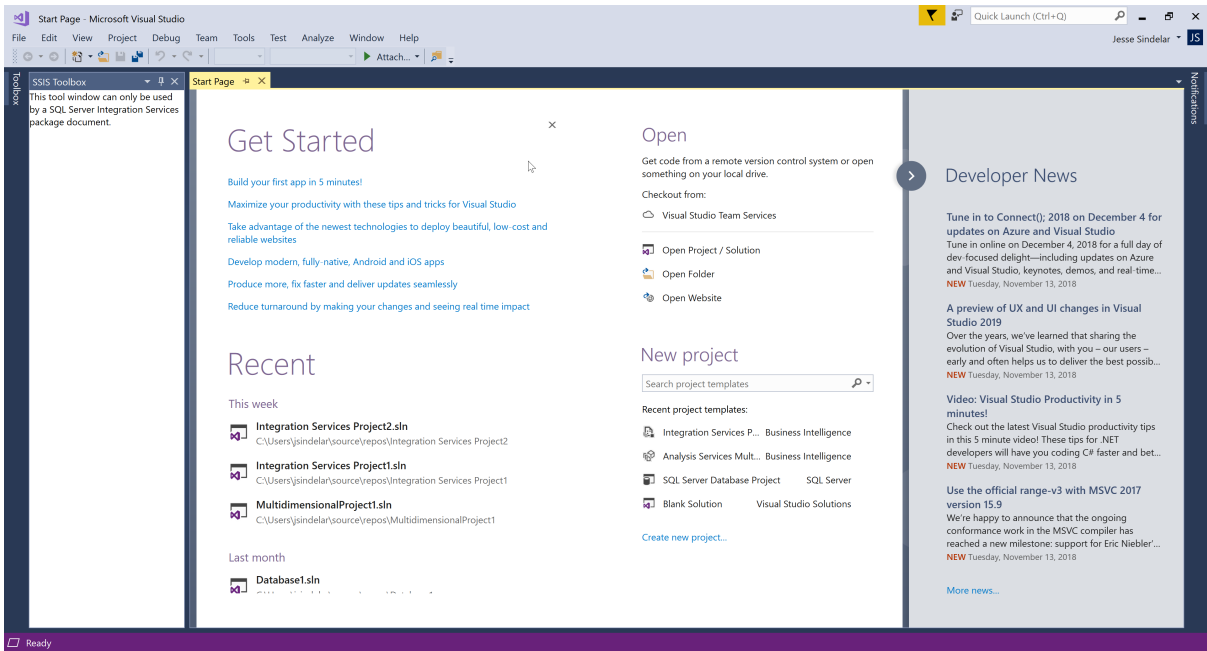
1. Open **Start > All Programs > Microsoft SQL Server 2005, 2008, 2012, or 2014**. You should be able to see **Business Intelligence Development Studio** or **SQL Server Data Tools** if it's installed.



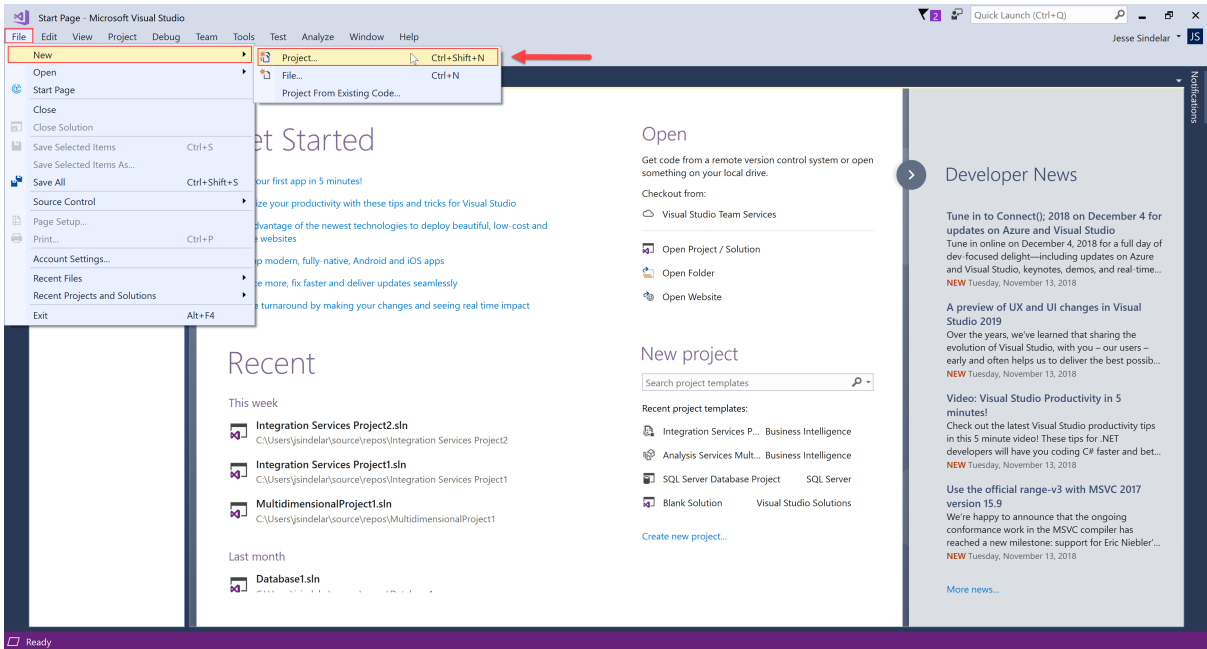
Verifying SSIS Installation

Complete the following steps to see if SSIS components are installed:

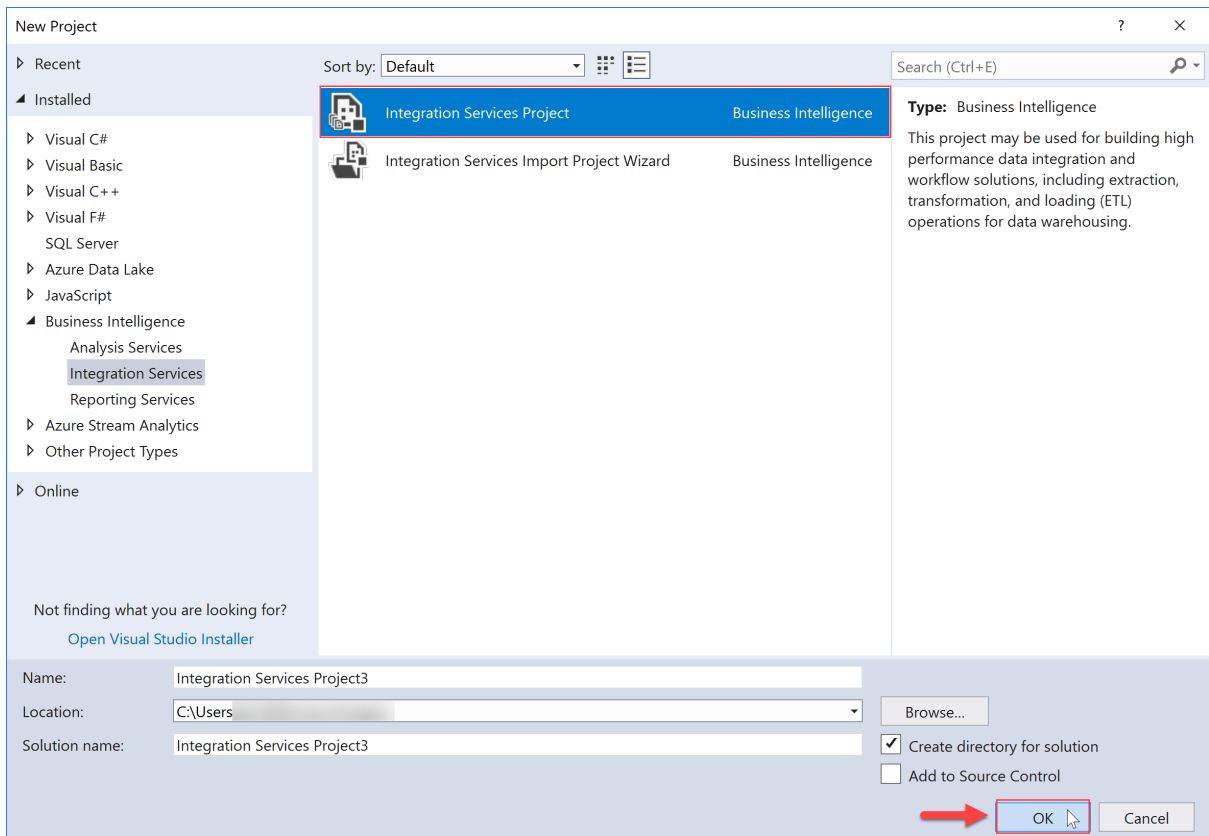
1. Open **BIDS** or **SQL Server Data Tools**.



2. Once open, select **File > New > Project**.



3. In the **New Project** dialog box, select **Business Intelligence Projects** on the left hand side. If you see **Integration Services Project** on the right hand side, then the SSIS components are installed.



Additional Requirements

Oracle Upsert Destination

The following are [Oracle Upsert Destination](#) Requirements:

For 64-bit Task Factory:	For 32-bit Task Factory:
<ul style="list-style-type: none"> • 64-bit Oracle Data Access Components (ODAC) 11g with Oracle Developer Tools for Visual Studio • 64-bit Oracle 12c Managed Data Access Client 	<ul style="list-style-type: none"> • 32-bit Oracle Data Access Components (ODAC) 11g with Oracle Developer Tools for Visual Studio • 32-bit Oracle 12c Managed Data Access Client

Expression Based Components

Control Flow (e.g. [Expression Task](#)) and Data Flow (e.g. [Advanced Aggregator Transform](#), [Case Transform](#), [Null Handler Transform](#), etc.) Components require read and write access to the **C:\Windows\TEMP** directory. This directory is used to store temporary code during package executions. If read or write access is denied to this directory, an error message similar to the following may be encountered:

System.Exception: file 'C:\Windows\TEMP\xyz.0.vb' could not be found no input sources specified at...

See the [Task Factory Expression Based Components Require Read/Write Access to C:\Windows\TEMP](#) article for more details.