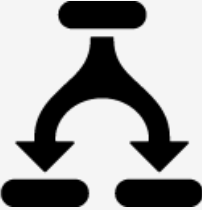


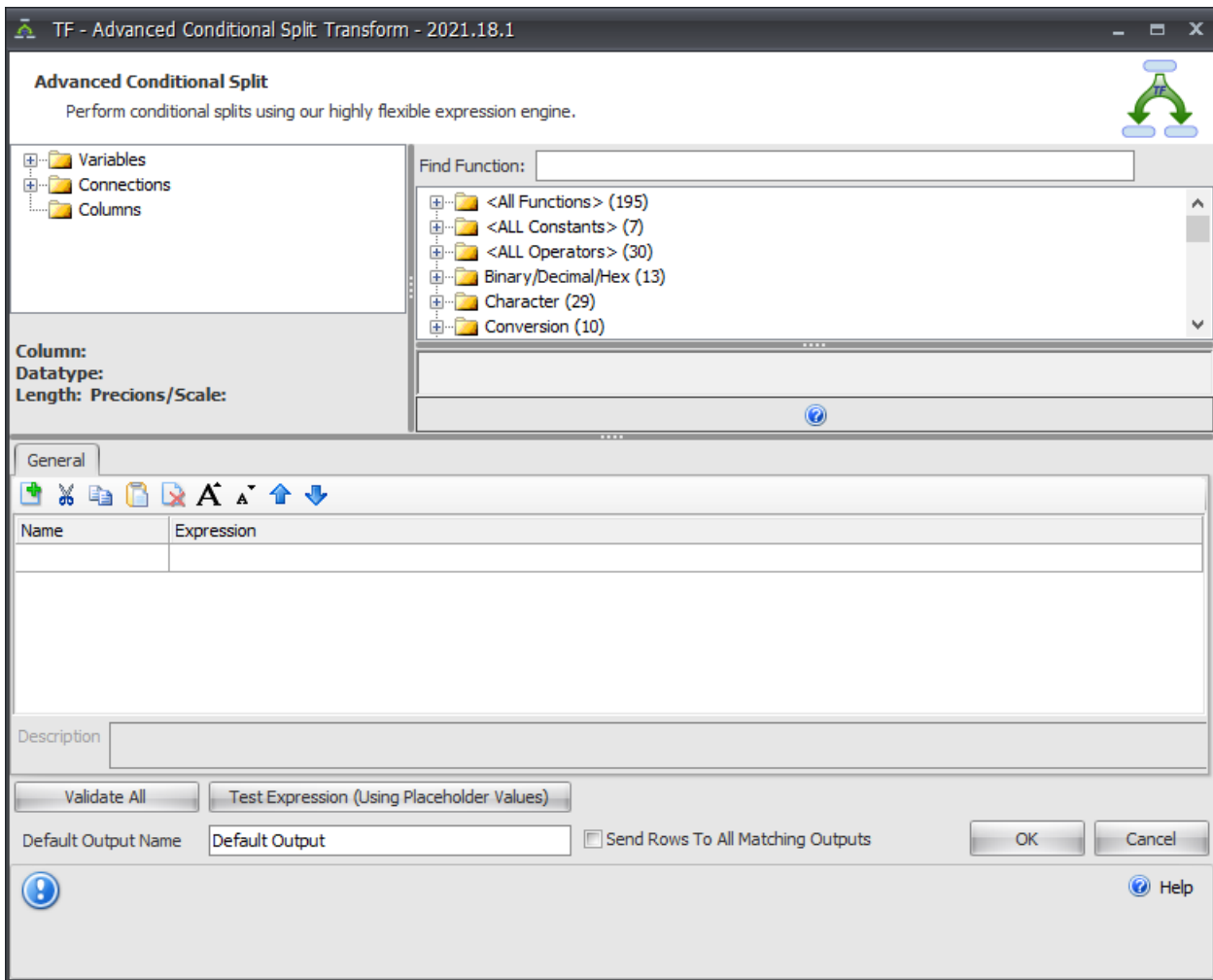
# Task Factory Advanced Conditional Split Transform

Last Modified on 11 August 2022

🔔 Task Factory users running version 2020.1.4 or older (released prior to May 27, 2020): **There's an important Task Factory update.** Please visit [here](#) for more details.

## Advanced Conditional Split Transform

Transform Icon	Transform Description
	<p>The <b>Advanced Conditional Split Transform</b> is used to conditionally route rows to different outputs depending on the expression defined by using columns, variables, and expressions.</p>



Option	Description
<b>Column Browser</b>	Located on the left hand side, the column browser window shows you all the available columns, variables and connections that can be used as part of a derived column expression. Selecting a plus sign next to each group in the tree view expands that group of items. Any item from the column browser can be dragged into an expression in the column grid below.
<b>Functions Browser</b>	Located on the right hand side, the functions browser window lists all of the available functions that can be used in the advanced derived column (as well as any of the expressions based tasks). All functions are grouped into an appropriate group (e.g. Character, Data Cleansing) based on what the function either does or returns. For instance, the character function <b>Left</b> is listed under the <b>Character</b> group because it performs operations on a set of characters or a string. Selecting a function gives you a description, syntax overview, and examples on how to use the function.
<b>Available Functions List</b>	For a list of all available functions, along with syntax, descriptions, and examples, see the <a href="#">Functions List</a> articles.
<b>Output Grid</b>	The bottom window which is the output grid allows you to define conditional split expressions to route rows matching the expression for that output.

Option	Description
<b>General Tab</b>	<ul style="list-style-type: none"> <li>• <b>Name</b> - The name of the column or expression.</li> <li>• <b>Expression</b> - This is the expression used to conditionally split the rows of data.</li> </ul>
<b>Validate All</b> Button	The <b>Validate All</b> button evaluates all of the expressions and check if they have errors. An error or warning icon displays if there are any issues with the expressions.
<b>Test Expression (Using Placeholder Values)</b> Button	This button creates temporary values based on the data type and executes the expression that is currently selected in the grid. To test the expression by entering your own values use the expression editor.
<b>Default Output Name</b>	This is the name of the output where any rows that do not match any of the expressions are routed.