
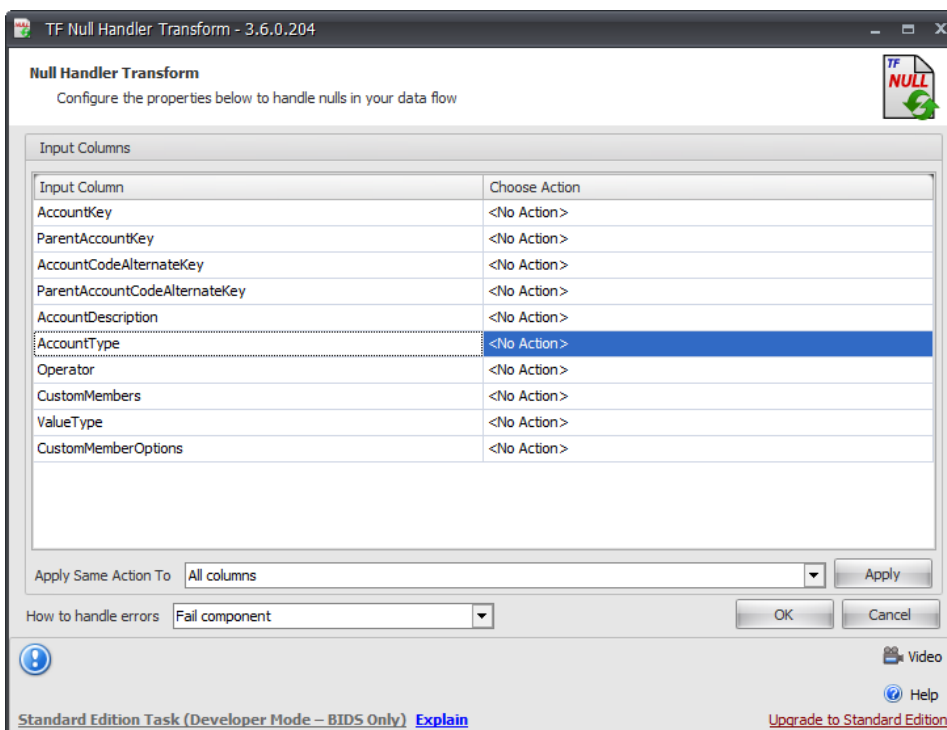


Task Factory Null Handler Transform

Last Modified on 28 September 2020

Null Handler Transform

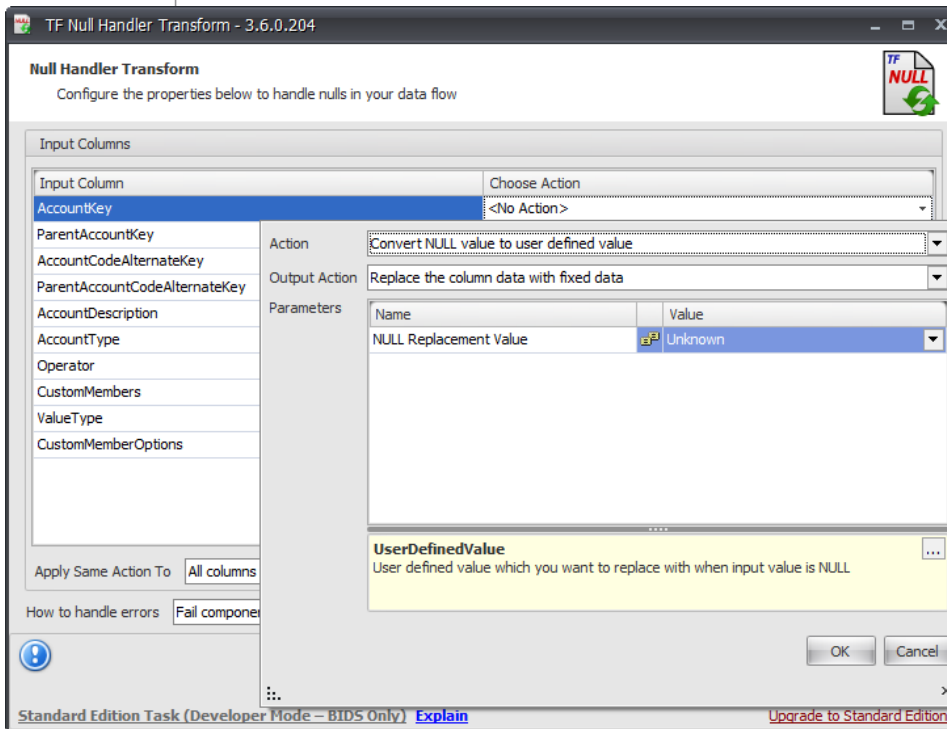
Icon	Description
	The Null Handler Transform allows the user to replace null or empty data with user specified data.



Input Columns

Option	Description
Input Column	The name of the input column.
Choose Action	There are three actions that can be defined to replace null or blank data: <ul style="list-style-type: none">• Replace Null Value with User Defined Value - This action is used to replace null data with a user defined value.• Replace Blank Value with Null - This action is used to replace blank values with null value. This is important where systems depend on data being null in a column.• Replace Blank Value with User Defined Value - This action is used to replace empty strings with a user defined value.

Option	Description
--------	-------------



 **Additional Information:** See the [Task Factory Error Row Handling](#) article for more information about this functionality.