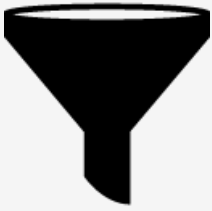


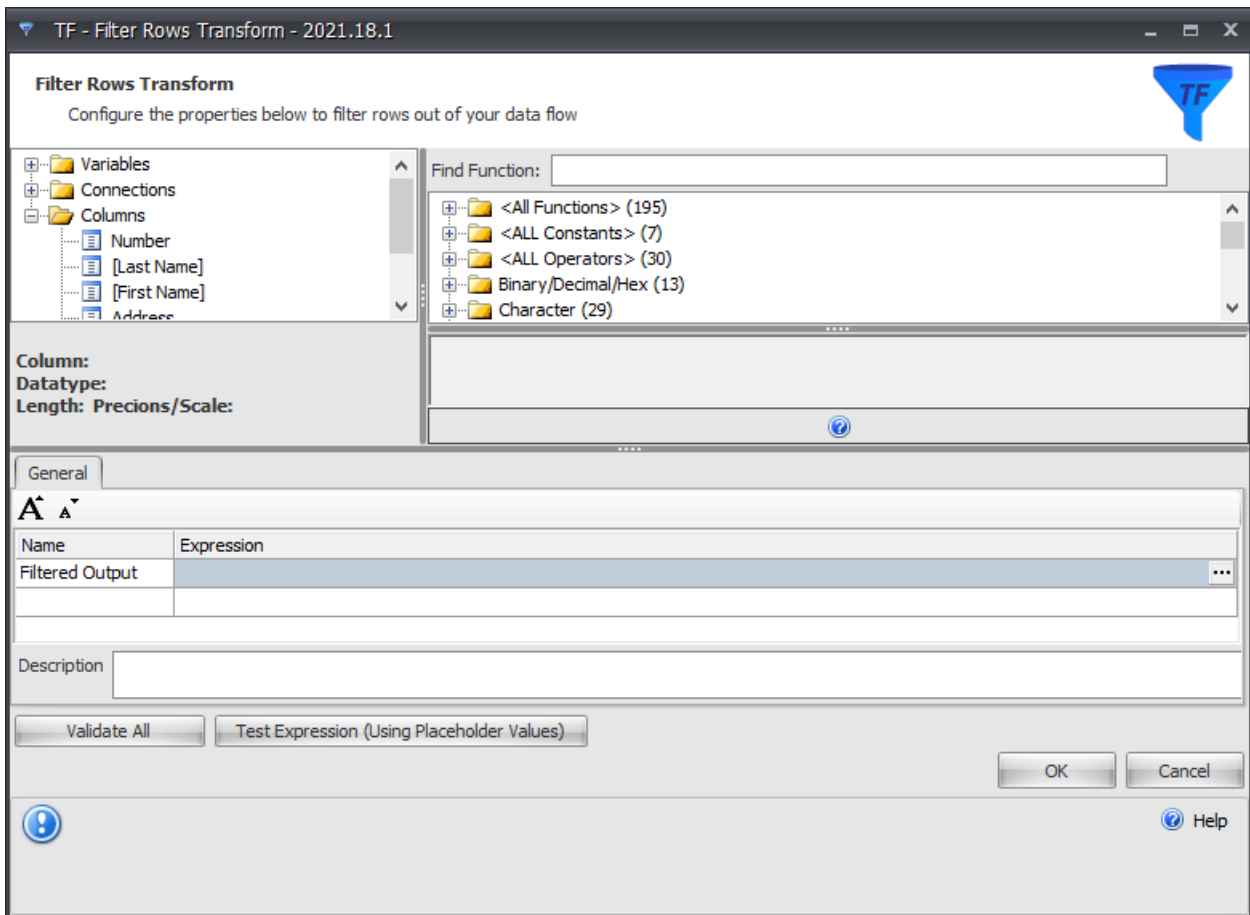
# Task Factory Filter Rows Transform

Last Modified on 18 August 2022

🔔 Task Factory users running version 2020.1.4 or older (released prior to May 27, 2020): **There's an important Task Factory update.** Please visit [here](#) for more details.

## Filter Rows Transform

Transform Icon	Transform Description
	The <b>Filter Rows <u>Transform</u></b> is used to filter rows from an upstream based on an expression.



Option	Description
<b>Column Browser</b>	Located in the top left, the column browser show all available columns, variable and connections that can be used as part of a derived column expression.
<b>Functions Browser</b>	Located in the top right, the functions browser lists all of the available functions that can be used in the advanced derived column.
<b>Filter Grid</b>	<p>The filter grid allows you to define a single expression to filter rows matching the expression.</p> <ul style="list-style-type: none"> <li>• <b>Name</b> - This is the name of the output where any rows that do not match any of the expressions are routed.</li> <li>• <b>Expression</b> - This is the expression used to filter the rows of data.</li> </ul>
<b>Validate All</b>	The <b>Validate All</b> button evaluates all of the expressions and checks if the expression has errors. An error or warning icon displays if there are any issues with the expressions.
<b>Test Expression</b>	This button creates temporary values based on the data type and executes the expression that is currently selected in the grid.

## Available Functions List

For a list of all available functions, along with syntax, descriptions, and examples, see the [Functions List](#)

articles.

---