

# Task Factory SharePoint

Last Modified on 25 May 2023

🚩 Task Factory users running version 2020.1.4 or older (released prior to May 27, 2020): **There's an important Task Factory update.** Please visit [here](#) for more details.

**Note:** Task Factory supports SharePoint versions 2010 through 2019.

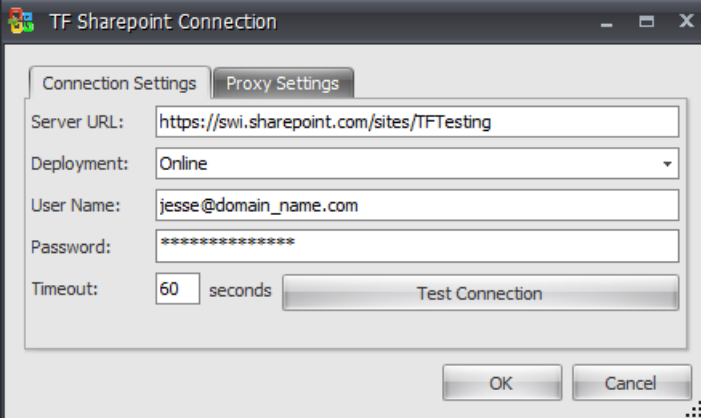
## In this article:

- [SharePoint Connection Manager](#)
- [SharePoint Documents Connection Manager](#)
- [SharePoint OAuth2 Connection Manager](#)
- [SharePoint Documents Task](#)

## SharePoint Connection Manager

The **SharePoint Connection Manager** is used to set up a connection to a SharePoint server. Used with SharePoint [Source](#) and SharePoint [Destination](#). The SharePoint Documents [Task](#) requires the similar SharePoint Documentation Connection Manager.

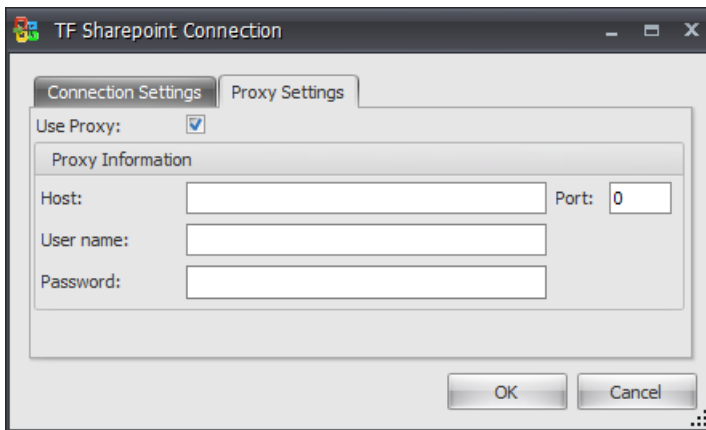
## Connection Settings



Option	Description
Server URL	URL of the SharePoint server.

Option	Description
<b>Deployment</b>	You have three options for the deployment: <ul style="list-style-type: none"> <li>• Premise</li> <li>• Online</li> <li>• Claims Based Authentication</li> </ul>
<b>User Name</b>	The user name of the SharePoint server.
<b>Password</b>	Password for the server.
<b>Timeout</b>	Time in seconds before the connection times out if the connection fails.

## Proxy Settings



Option	Description
<b>Use Proxy</b>	Selecting this allows you to connect through a proxy. <b>Note:</b> If checked you must fill in the proxy information located below the check box.

## SharePoint Documents Connection Manager

The **SharePoint Documents Connection Manager** is used with the SharePoint Documents task.

### Connection Settings

Option	Description
<b>Server URL</b>	URL of the SharePoint server.
<b>Deployment</b>	You have three options for the deployment: <ul style="list-style-type: none"> <li>• Premise</li> <li>• Online</li> <li>• Claims Based Authentication</li> </ul>
<b>User Name</b>	The user name of the SharePoint server.
<b>Password</b>	Password for the server.
<b>Timeout</b>	Time in seconds before the connection times out if the connection fails.

## Proxy Settings

Option	Description
<b>Use Proxy</b>	Selecting this allows you to connect through a proxy. <b>Note:</b> If checked you must fill in the proxy information located below the check box.

# SharePoint OAuth2 Connection Manager

Used with the SharePoint Source and SharePoint Destination data flow components.

Sharepoint OAuth2 Connection - 2023.2.0.40482

Connection Settings Headers Refresh Token Client Certificate Proxy Advanced Options

Client Id

Client Secret

Access Token Get Token

Is Bearer Token

Access Token Expiration Date

Security Protocol Default

Site Id

Test Connection

OK Cancel

## Connection Settings

Option	Description
<b>Client Id</b>	The Client ID for your SharePoint connection. The Client ID is found in your <a href="#">Azure Portal</a> .
<b>Client Secret</b>	The Client Secret for your SharePoint connection. The Client Secret is found in your <a href="#">Azure Portal</a> .
<b>Access Token</b>	Select <b>Get Token</b> to open the <b>Token Getter</b> window.
<b>Is Bearer Token?</b>	Select this option if the Access Token is a bearer token.
<b>Access Token Expiration Date</b>	The expiration date of the access token. <b>Note:</b> This settings is optional.

Option	Description										
<p><b>Security Protocol</b></p>	<p>The Security Protocol used by the API. The <b>Default</b> option uses the TLS version used by your .NET version by default. See the following chart for more information:</p> <table border="1" data-bbox="480 383 1402 1402"> <thead> <tr> <th data-bbox="480 383 667 495">.NET Version</th> <th data-bbox="667 383 1402 495">TLS Support Information</th> </tr> </thead> <tbody> <tr> <td data-bbox="480 495 667 607">.NET 4.6 and above</td> <td data-bbox="667 495 1402 607">Supports TLS 1.2 by default.</td> </tr> <tr> <td data-bbox="480 607 667 913">.NET 4.5</td> <td data-bbox="667 607 1402 913">           TLS 1.2 is supported, but you need to opt-in to use it. Execute the following code before making a connection to a secured resource to make TLS 1.2 the default:           <ul style="list-style-type: none"> <li>• <b>ServicePointManager.SecurityProtocol = SecurityProtocolType.Tls12</b></li> </ul> </td> </tr> <tr> <td data-bbox="480 913 667 1263">.NET 4.0</td> <td data-bbox="667 913 1402 1263">           TLS 1.2 is not supported. If you have .NET 4.5 (or above) installed on the system, you can opt in for TLS 1.2 even if your application framework doesn't support it. SecurityProtocolType in .NET 4.0 doesn't have an entry for TLS1.2, so you need to use a numerical representation of this enum value:           <ul style="list-style-type: none"> <li>• <b>ServicePointManager.SecurityProtocol = (SecurityProtocolType)3072;</b></li> </ul> </td> </tr> <tr> <td data-bbox="480 1263 667 1402">.NET 3.5 or below</td> <td data-bbox="667 1263 1402 1402">           TLS 1.2 is not supported, and there is no workaround. Upgrade your application to a more recent version of the framework.         </td> </tr> </tbody> </table>	.NET Version	TLS Support Information	.NET 4.6 and above	Supports TLS 1.2 by default.	.NET 4.5	TLS 1.2 is supported, but you need to opt-in to use it. Execute the following code before making a connection to a secured resource to make TLS 1.2 the default: <ul style="list-style-type: none"> <li>• <b>ServicePointManager.SecurityProtocol = SecurityProtocolType.Tls12</b></li> </ul>	.NET 4.0	TLS 1.2 is not supported. If you have .NET 4.5 (or above) installed on the system, you can opt in for TLS 1.2 even if your application framework doesn't support it. SecurityProtocolType in .NET 4.0 doesn't have an entry for TLS1.2, so you need to use a numerical representation of this enum value: <ul style="list-style-type: none"> <li>• <b>ServicePointManager.SecurityProtocol = (SecurityProtocolType)3072;</b></li> </ul>	.NET 3.5 or below	TLS 1.2 is not supported, and there is no workaround. Upgrade your application to a more recent version of the framework.
.NET Version	TLS Support Information										
.NET 4.6 and above	Supports TLS 1.2 by default.										
.NET 4.5	TLS 1.2 is supported, but you need to opt-in to use it. Execute the following code before making a connection to a secured resource to make TLS 1.2 the default: <ul style="list-style-type: none"> <li>• <b>ServicePointManager.SecurityProtocol = SecurityProtocolType.Tls12</b></li> </ul>										
.NET 4.0	TLS 1.2 is not supported. If you have .NET 4.5 (or above) installed on the system, you can opt in for TLS 1.2 even if your application framework doesn't support it. SecurityProtocolType in .NET 4.0 doesn't have an entry for TLS1.2, so you need to use a numerical representation of this enum value: <ul style="list-style-type: none"> <li>• <b>ServicePointManager.SecurityProtocol = (SecurityProtocolType)3072;</b></li> </ul>										
.NET 3.5 or below	TLS 1.2 is not supported, and there is no workaround. Upgrade your application to a more recent version of the framework.										
<p><b>Site Id</b></p>	<p>The Site Id found at <a href="https://my_org.sharepoint.com/sites/MY_SITE/_api/site/id">https://my_org.sharepoint.com/sites/MY_SITE/_api/site/id</a>.</p> <p><b>Note:</b> Site Id is a mandatory requirement. Not entering the Site Id will result in a connection error.</p>										

Token Getter

**Task Factory OAuth2 Token Getter**

Access Token Configuration Parameters ⓘ

**Client Id**

The client id of the Azure app URL Encode Parameter

**Client Secret**

The client secret of the Azure app URL Encode Parameter

**Directory (tenant) ID**

The Directory (tenant) ID of the Azure app URL Encode Parameter

Scopes

GraphDefault https://graph.microsoft.com/.default

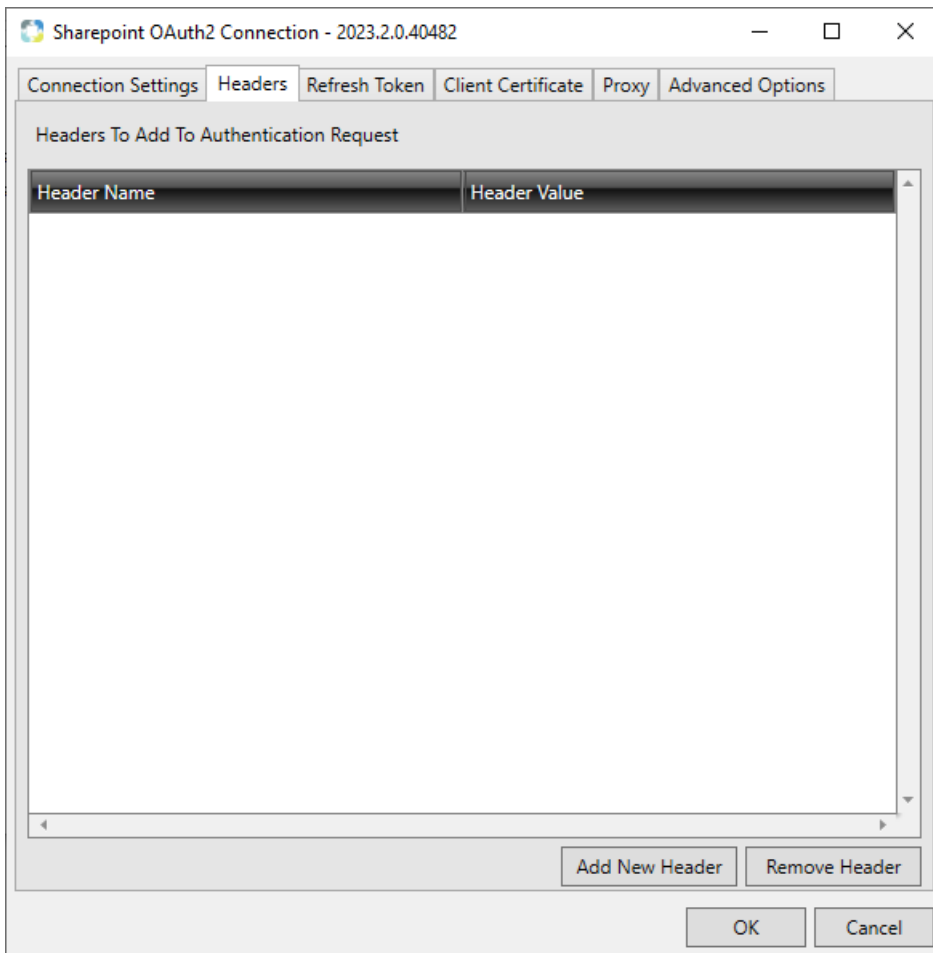
OfflineAccess offline\_access

Port for response  ⓘ Set your Redirect Uri to:  ⓘ

**Get Access Token**

Option	Description
<b>Client Id</b>	This field should be auto-completed from the previous window with your Client Id.
<b>Client Secret</b>	This field should be auto-completed from the previous window with your Client Secret.
<b>Directory (tenant) ID</b>	The Directory (tenant) ID of the Azure app.
<b>GraphDefault</b>	Select this option to enable the GraphDefault option.
<b>OfflineAccess</b>	Select this option to enable the offline access option. <b>⚠ Important:</b> OfflineAccess is required if you are using a Refresh Token. Without OfflineAccess enabled, the component will fail when the Access Token expires.
<b>Port for response</b>	The port on your local machine where you want to send the token request response. <b>⚠ Important:</b> You will need to add this port in your Azure Portal at <a href="https://portal.azure.com">portal.azure.com</a> .
<b>Set your Redirect Uri to:</b>	Use this as your Redirect Uri in your OAuth2 App settings. <b>⚠ Important:</b> You will need to add this redirect uri in your Azure Portal at <a href="https://portal.azure.com">portal.azure.com</a> .
<b>Get Access Token</b>	Opens a browser window to login to your Microsoft account and grant access.

## Headers



You can create header names and values by entering the information in their corresponding windows.

## Refresh Token

Sharepoint OAuth2 Connection - 2023.2.0.40482

Connection Settings Headers Refresh Token Client Certificate Proxy Advanced Options

Refresh Token

Refresh Token Request Settings

Token Request Url

Post Data

Headers

Header Name	Header Value

Add New Header Remove Header

Results Returned In

Access Token Path

Refresh Token Path

Use Token Store

Token Store Id  Token Store Path(Optional)

OK Cancel

Option	Description
<b>Refresh Token</b>	Authentication information provided to you at the application's developer site.  <b>Note:</b> This should match the API Key from the Connection Settings window.
<b>Token Request Url</b>	The URL that returns a refresh token. Example: <b>https://api.citrixonline.com/oauth/access_token</b>
<b>Headers</b>	Allows you to add headers within the refresh token. Select <b>Add New Header</b> to add a header. Select <b>Remove header</b> to remove a header.
<b>Results Returned In</b>	Specifies how results are returned from the application (JSON, XML, or String.)
<b>Access Token Path</b>	The token path for the access token. Example: <b>access_token</b>
<b>Refresh Token Path</b>	The token path for the refresh token. Example: <b>refresh_token</b>



Option	Description
<b>Group Index</b>	Identifies the index position to return (0 based).  <b>Note:</b> This option is available when you select <b>String</b> for the <b>Results Returned In</b> option.
<b>Use Token Store</b>	This option creates a file on your machine that saves the access token, and refresh token in an encrypted format.
<b>Token Store Id</b>	Identifies the Token Store Id.
<b>Token Store Path (Optional)</b>	Identifies the Token Store path.
<b>Test Get Refresh Token</b>	Select this option to test the retrieval of the Refresh Token.

## Client Certificate

Sharepoint OAuth2 Connection - 2023.2.0.40482

Connection Settings | Headers | Refresh Token | **Client Certificate** | Proxy | Advanced Options

Use Client Certificate

Certificate Store Location

Certificate Store Location

Search For Certificate

Leave blank to view all certificates

Certificate Thumbprint

Option	Description
<b>Use Client Certificate</b>	Select this option if you want to use the client certificate.

Option	Description
<b>Certificate Store Location</b>	The client store location.
<b>Search For Certificate</b>	Enter a certificate that you want to search for and then select <b>Find</b> .  <b>Note:</b> Leave this section blank and select <b>Find</b> to view all certificates.
<b>Certificate Thumbprint</b>	The identifier thumbprint of the selected certificate.

## Proxy

Sharepoint OAuth2 Connection - 2023.2.0.40482

Connection Settings Headers Refresh Token Client Certificate **Proxy** Advanced Options

Proxy Host

Proxy Port

Proxy User Name

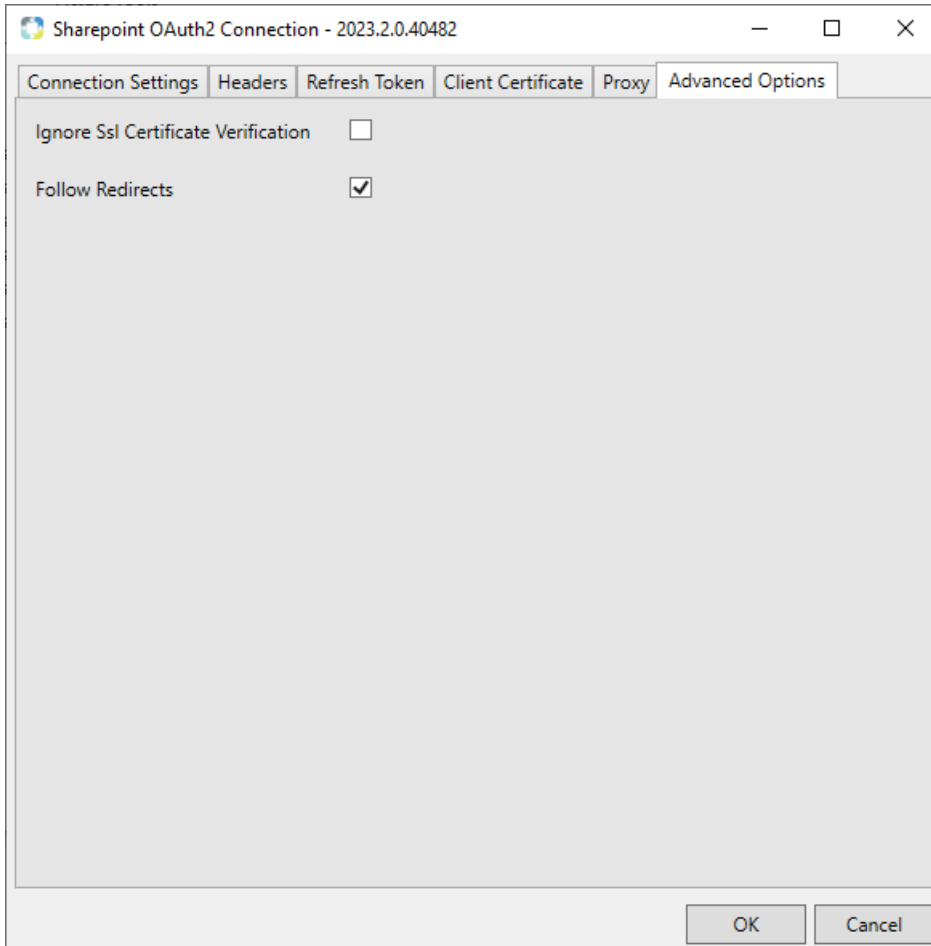
Proxy Password

OK Cancel

Option	Description
<b>Proxy Host</b>	When connecting to an endpoint using a proxy, you should enter the proxy URL in this field.
<b>Proxy Port</b>	The port number that corresponds to the URL proxy host.
<b>User Name</b>	The username needed to authenticate to the proxy.

Option	Description
Password	The password that allows you to authenticate to the proxy.


## Advanced Options

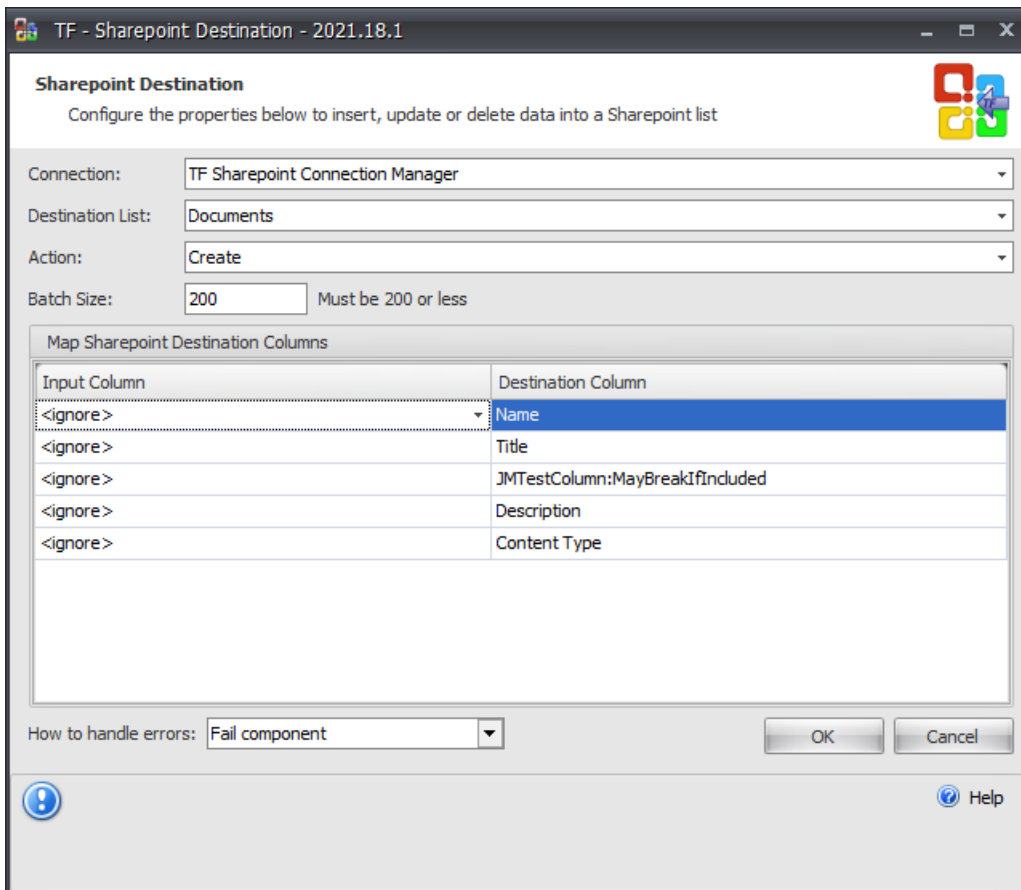


Option	Description
<b>Ignore Ssl Certificate Verification</b>	<p>Selecting this option ignores the SSL Certificate notification from the API during the connection.</p> <p><b>Note:</b> This option applies to APIs that require you to have an SSL Certificate. Select this option if the SSL Certificate is not needed.</p>
<b>Follow Redirects</b>	<p>Selecting this option implements a 301 redirect on configured endpoints. For example, this option would automatically send your request to an HTTPS redirect once the request has reached the HTTP version of the site.</p>

## SharePoint Documents Task

Destination Icon	Destination Description
------------------	-------------------------

Destination Icon	Destination Description
	<p>The SharePoint destination is used to send data to a SharePoint object within an SSIS package. See the <a href="#">SharePoint Connection Manager</a> to learn more about setting up the <a href="#">connection manager</a>.</p>



Option	Description
<p><b>Connection</b></p>	<p>Select an existing connection manager or choose to create a new one.</p>
<p><b>Destination List</b></p>	<p>Choose the destination list from the drop down menu, this is where the data is sent.</p>
<p><b>Action</b></p>	<p>Once a list is chosen, you may select from three actions:</p> <ul style="list-style-type: none"> <li>• <b>Create</b> - This action creates rows in the selected list</li> <li>• <b>Update</b> - This action updates rows in the selected list.</li> <li>• <b>Delete</b> - This action deletes rows in the selected list.</li> </ul>
<p><b>Batch Size</b></p>	<p>Set the batch size, limited to 200.</p>

Option	Description
<b>Map SharePoint Destination Columns</b>	Once your destination is selected you can map the <b>Input</b> and <b>Destination</b> columns.

[🔗](#) **Additional Information:** See the [Task Factory Error Row Handling](#) article for more information about this functionality.