

Task Factory Connection Managers

Last Modified on 13 January 2022

🔔 Task Factory users running version 2020.1.4 or older (released prior to May 27, 2020): **There's an important Task Factory update.** Please visit [here](#) for more details.

Introduction

Once Task Factory is installed, you have access to new **Connection Managers**. The **Connection Manager** component stores the settings for a connection that's used within your package and creates the connection during the package runtime. They store your **ConnectionString** to your component and can be used in multiple packages.

Available Connection Managers

The following **Connection Managers** are available in Task Factory:

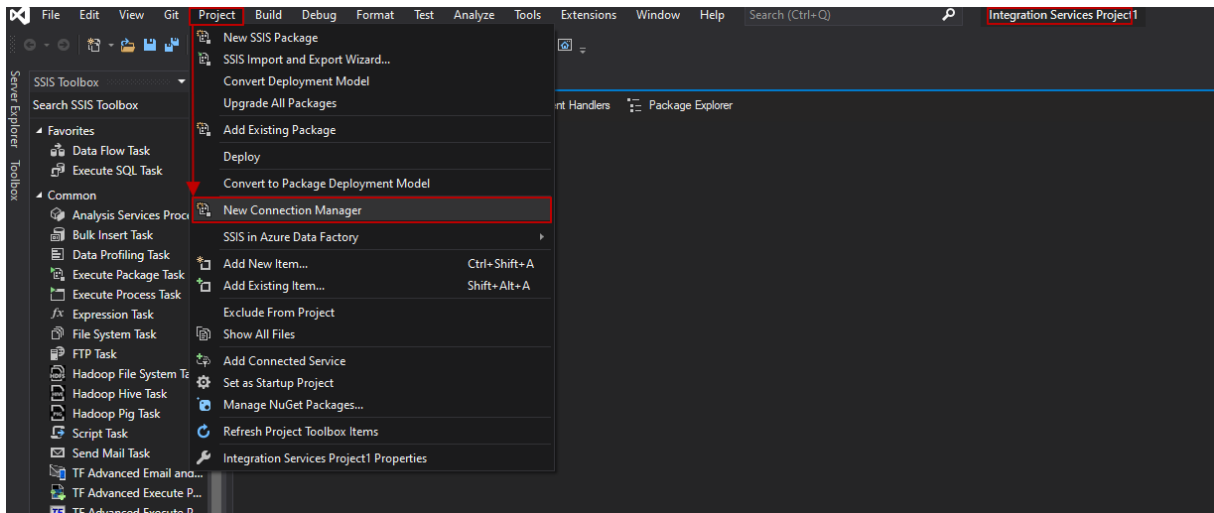
- [Advanced Cache Lookup](#)
- [Azure Storage](#)
- [Dynamics CRM](#)
- [Dynamics OData](#)
- [Email](#)
- [Excel](#)
- [Rest Basic](#)
- [Rest OAuth1](#)
- [Rest OAuth2](#)
- [SalesForce.com](#)
- [SecureFTP](#)
- [SharePoint](#)
- [Social OAuth](#)

📌 **Note:** If you do not see these options in Visual Studio, refer to the [Installing Task Factory](#) article for a troubleshooting checklist.

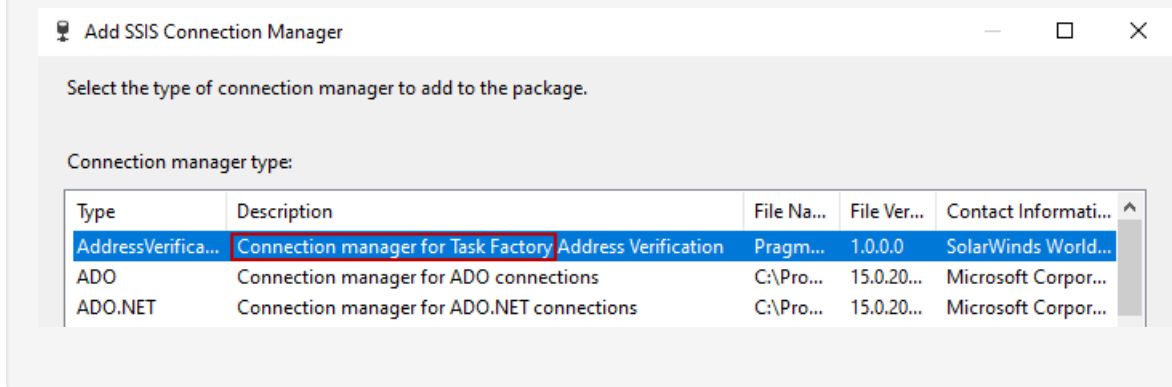
Creating a New Connection Manager

Add a new **Connection Manager** by completing the following process:

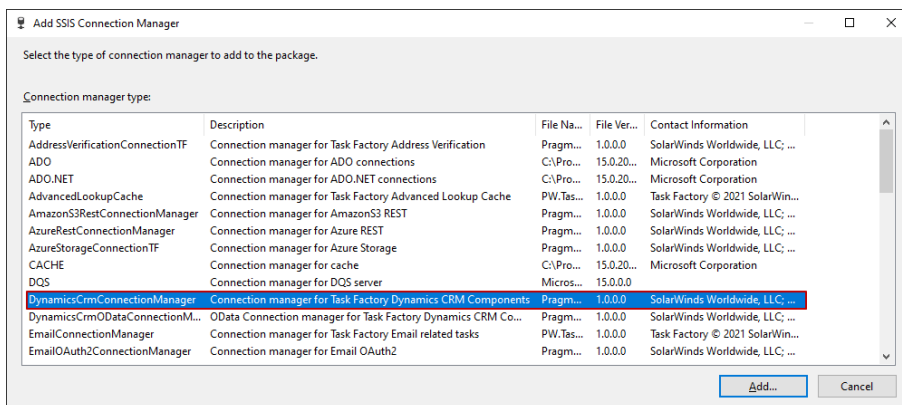
1. Open **SQL Server Data Tools** or **BIDS**. Select **Project > New Connection Manager** to open the **Add SSIS Connection Manager** window.



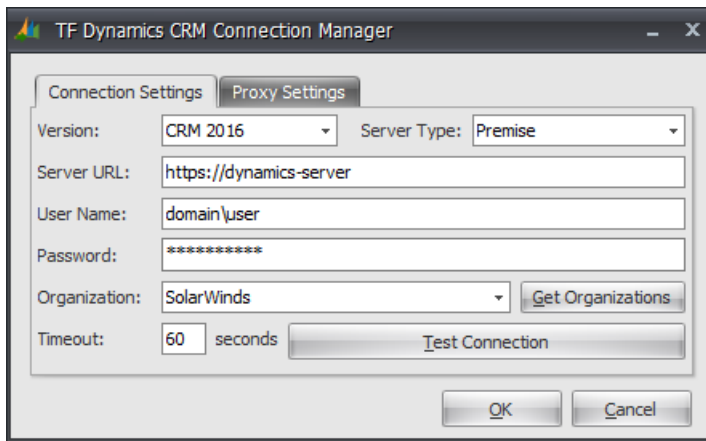
Note: The **Add SSIS Connection Manager** window opens with all available connection managers. A description of **Connection manager for Task Factory** denotes the Task Factory connection managers.



2. Select the desired **Connection Manager**, and then select **Add** to configure that **Connection Manager**.



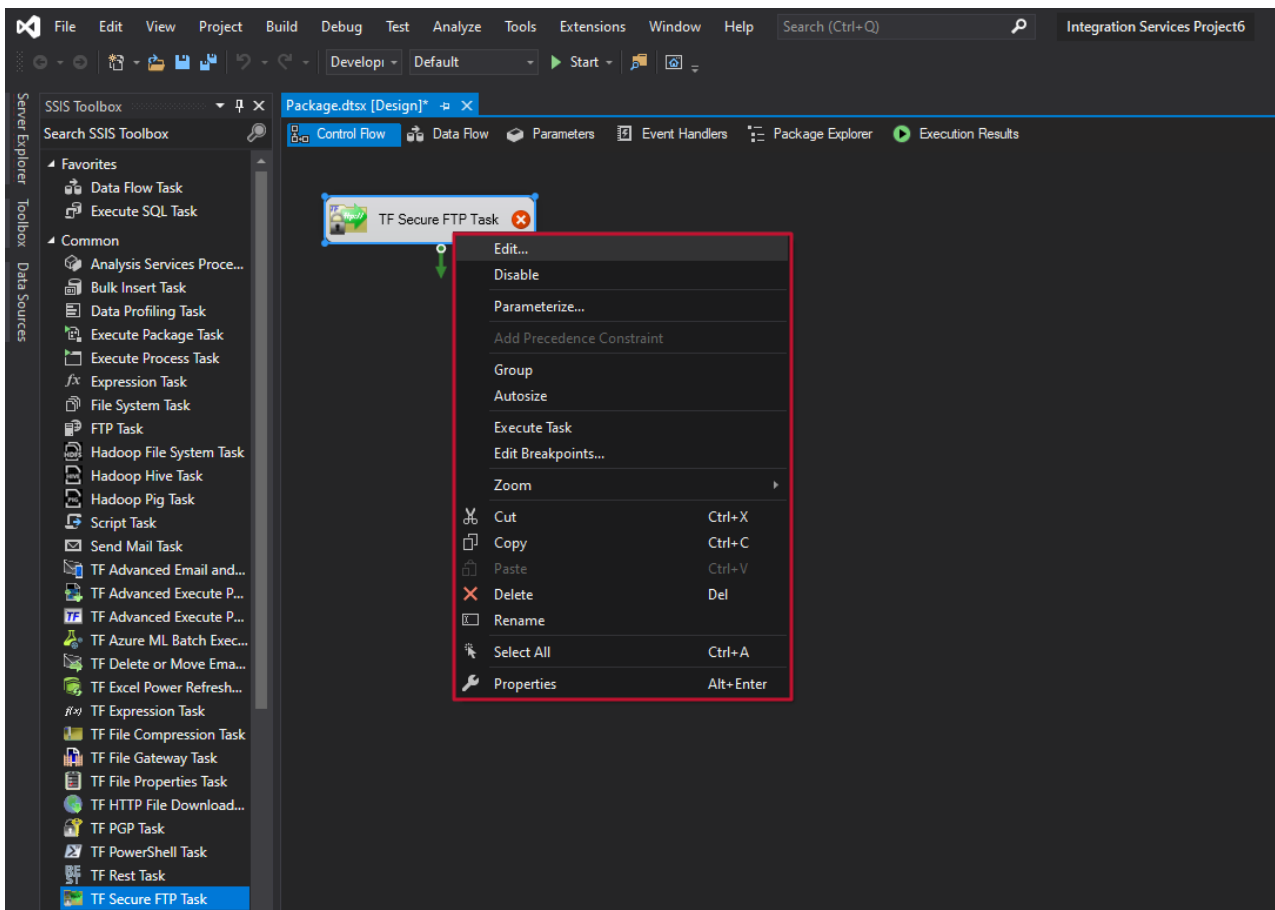
3. Complete the settings and configuration options for the selected **Connection Manager** type (and **Test Connection** if applicable), then select **OK**:



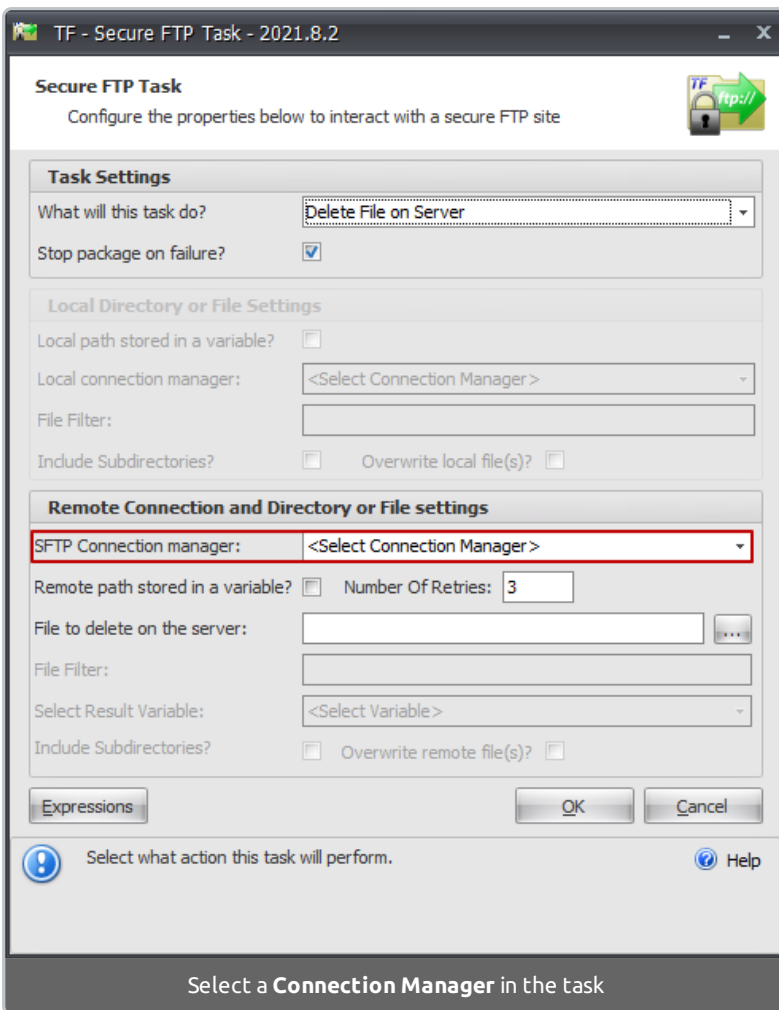
🎉 **Success:** The **Connection Manager** is added. You can now use your **Connection Manager** in tasks.

What's next?

Once a task from the **SSIS Toolbox** is added to your project, you can right-click it to access the context menu options:



For example, select **Edit** to configure the properties of a **Secure FTP Task**. This allows you to set the associated **Connection Manager**:



Note: The drop-down menu also has an option for adding new **Connection Managers**.