

Installing Task Factory

Last Modified on 25 May 2021

🔔 Task Factory users running version 2020.1.4 or older (released prior to May 27, 2020): **There's an important Task Factory update.** Please visit [here](#) for more details.

📄 **Download:** For more information about Task Factory pricing or downloading a trial, see the [Task Factory product page](#).

Prerequisites

🔗 **Additional Information:** See the [System Requirements](#) article for details on what's needed to install Task Factory.

Additional Information

- See the [Release Notes](#) for details on Task Factory versions
- For installing on Azure, see the [Enabling Task Factory on Azure-SSIS IR in ADF](#) article

Installing Task Factory

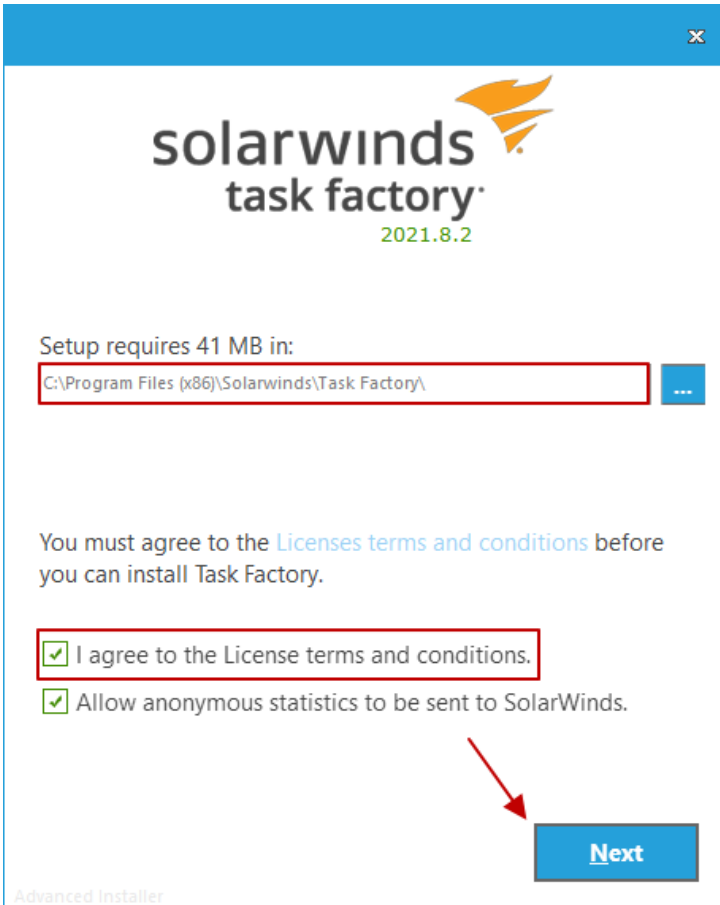
📌 **Note:** Task Factory must be installed on the server where the packages will be executing.

Complete the following steps to install Task Factory:

1. Start the **Task Factory installer** by running the **TaskFactory.exe** file.



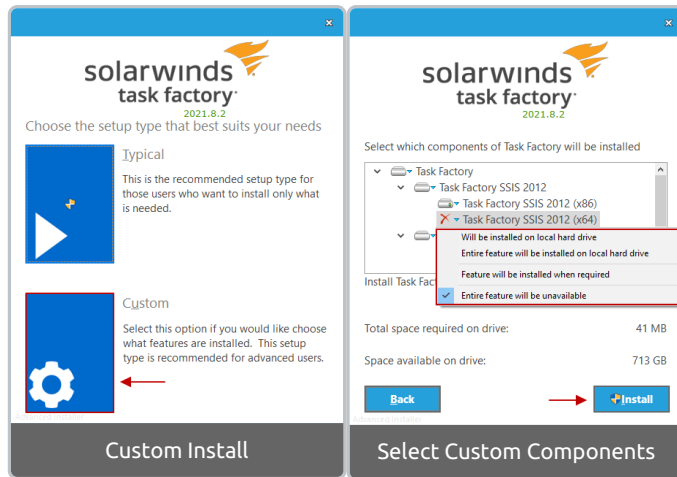
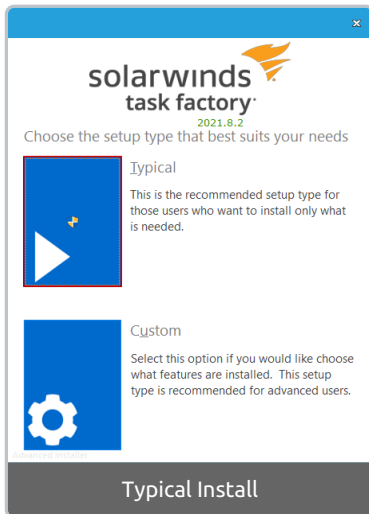
2. Select your install destination from the drop-box, then select the checkbox to **agree to the license terms and conditions**. Select **Next** to continue.



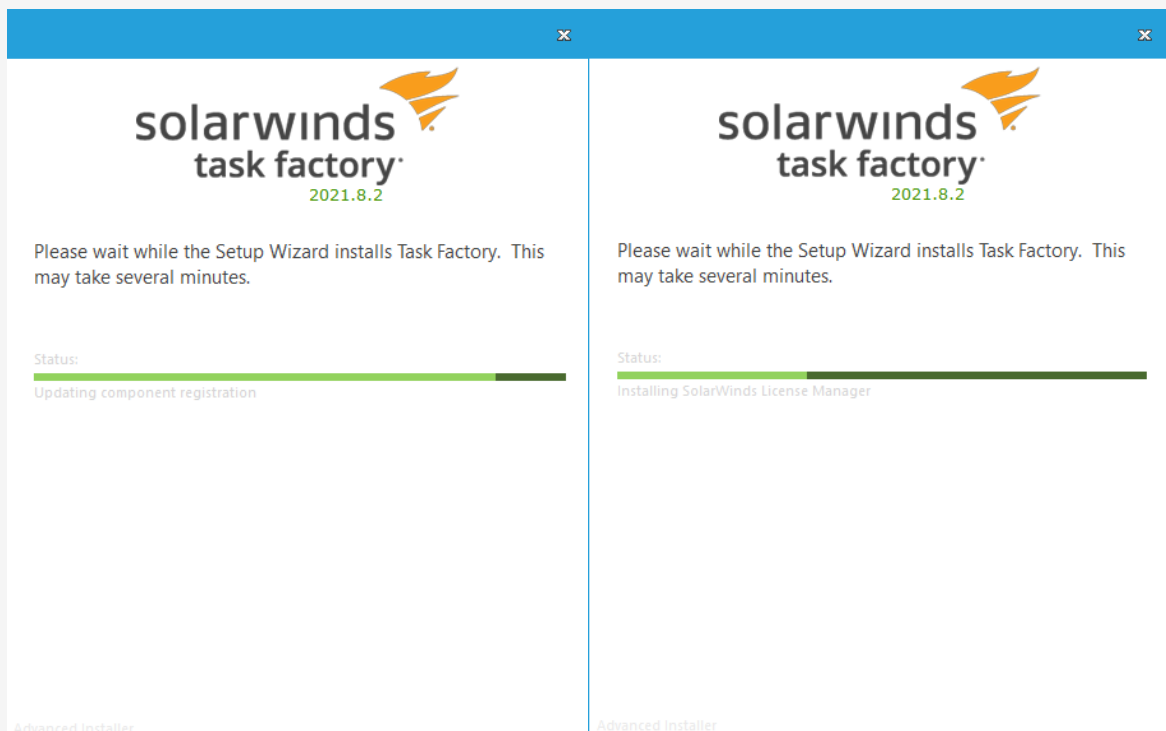
3. You may see a screen reminding you that you need a SolarWinds license for this version of Task Factory. Please ensure that you have your license from the [SolarWinds Customer Portal](#) before proceeding. Select **Install** to continue.
4. Select the **Typical** or **Custom** setup type, then select **install**.

Note: The **Typical** setup is recommended for most customers.

Important: If you choose the **Custom** installation for the 2016 version, you must include the 2012 and 2014 installations (which are selected by default).



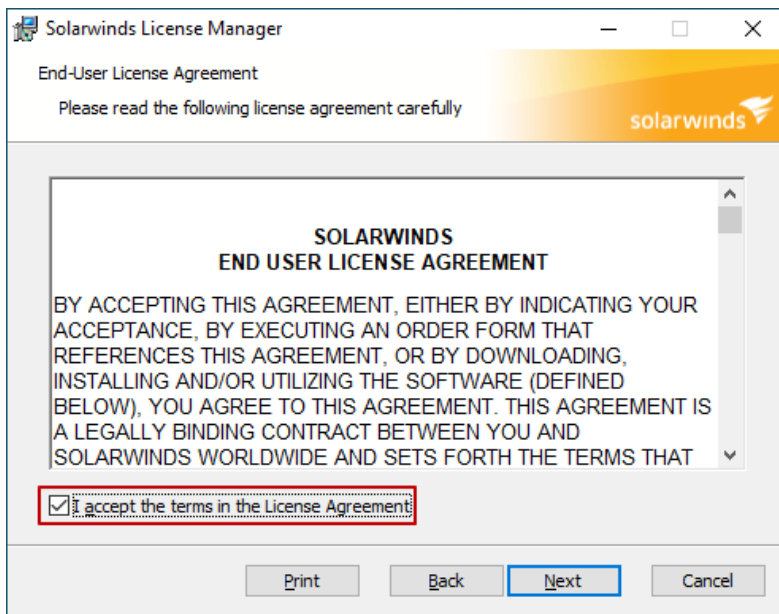
Note: The installation process may take several minutes. You can monitor the status through the installer.



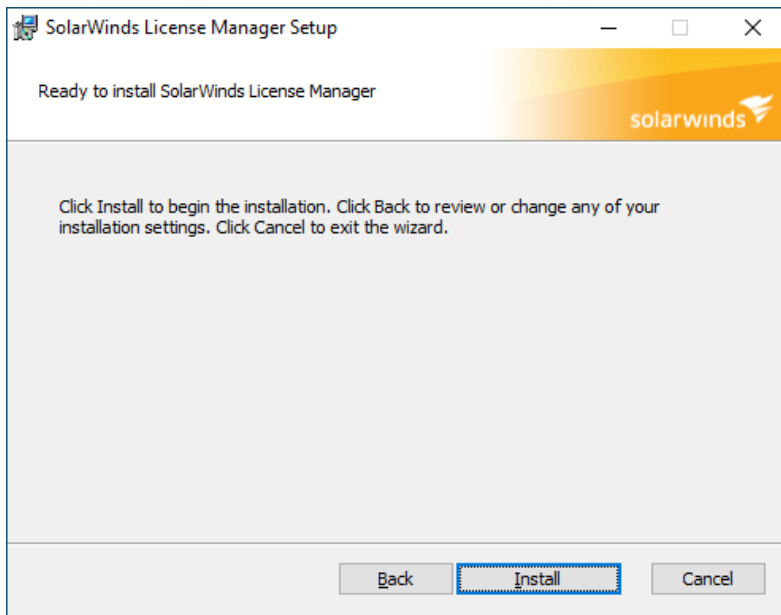
5. The Task Factory installation includes the **SolarWinds License Manager**. If the Setup Wizard seems stuck on the **Installing SolarWinds License Manager** step, check to see if there is a UAC warning or other window that requires focus to continue. Once the **SolarWinds License Manager Setup Wizard** appears, select **Next** to continue.



6. Check the **I accept the terms in the License Agreement** box, then select **Next** to continue.



7. Select **Install** to start the installation process for the **SolarWinds License Manager**.



8. Select **Finish** to close the **SolarWinds License Manager Setup** screen and return to the **Task Factory Setup Wizard**.



9. After the installation is complete, the confirmation window displays. Select **Finish** to complete the installation.



 **Success:** The SolarWinds Task Factory installation is complete.

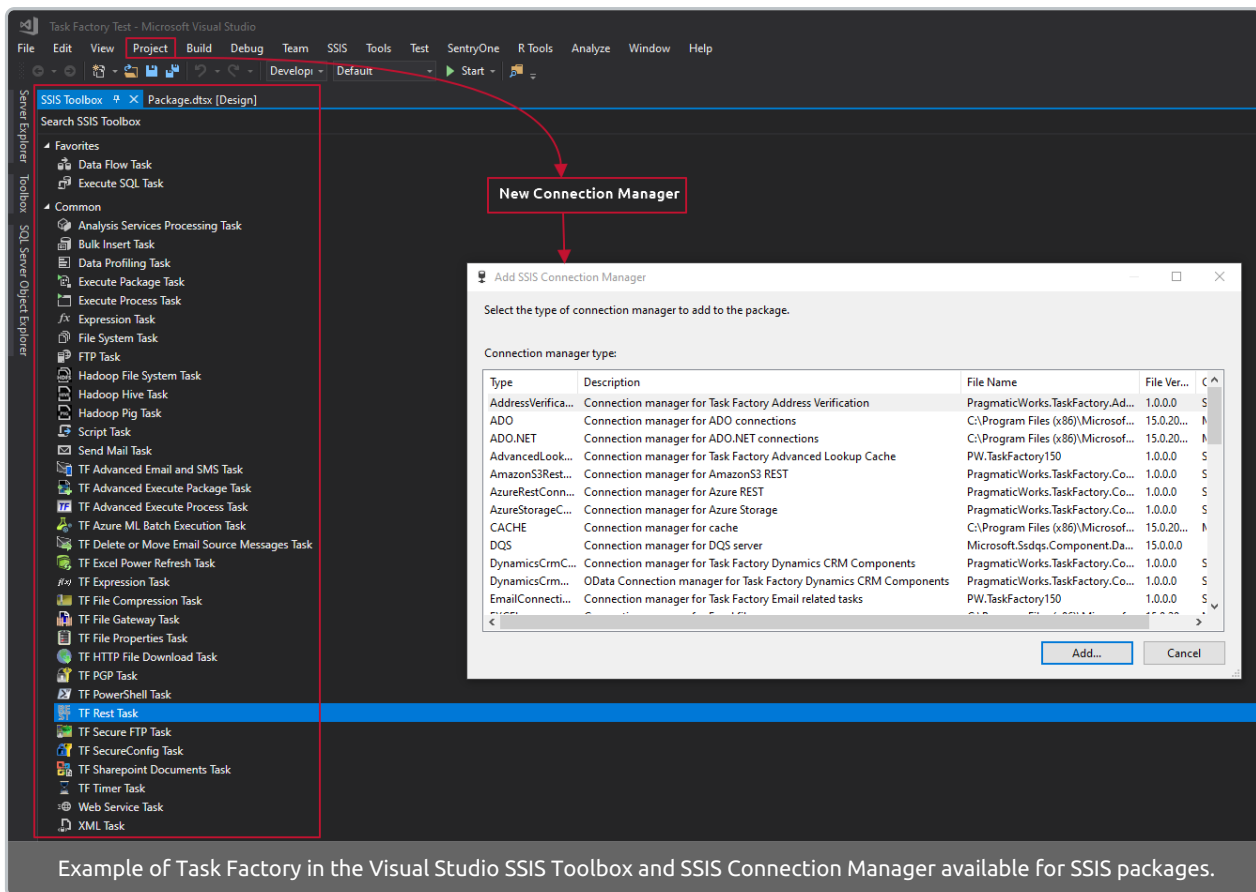
What's next?

Task Factory Licensing

See the [Task Factory Licensing](#) article to apply your license or activate your trial.

Task Factory in SSIS Toolbox

See the [Task Factory Connection Managers](#) article for instructions on adding new connection managers in Visual Studio.



Note: If you do not see these options in Visual Studio, ensure you have installed Task Factory to an environment that meets the [system requirements](#).

- [SQL Server Data Tools \(SSDT\) for Visual Studio](#) must be installed.
- The **New Connection Manager** option for the **Add SSIS Connection Manager** displays in Visual Studio for **Integration Services** type projects. See the [SQL Server Integration Services Projects](#) download from Microsoft.

If your Task Factory components aren't displaying in the **SSIS** toolbox after installation, you may not be targeting a supported version of SSIS. See the **Task Factory Items not showing up** tab in the [Common Errors](#) article for more information.

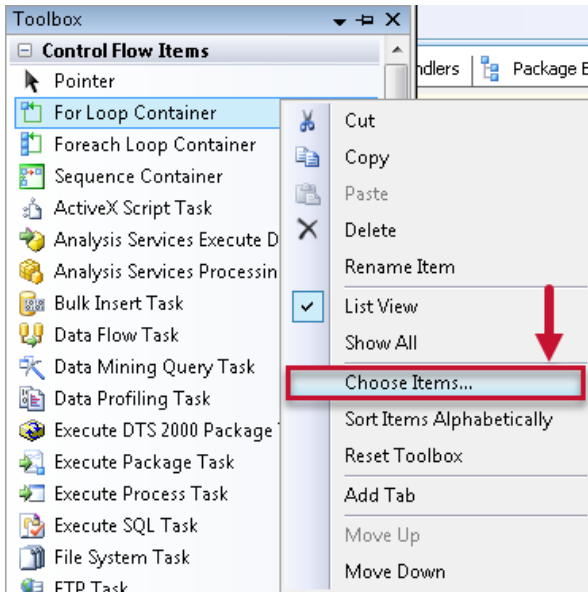
Adding Task Factory components in BIDS/Visual Studio 2010 or lower

Before you can use the Task Factory components in BIDS, you must add them to your toolbox.

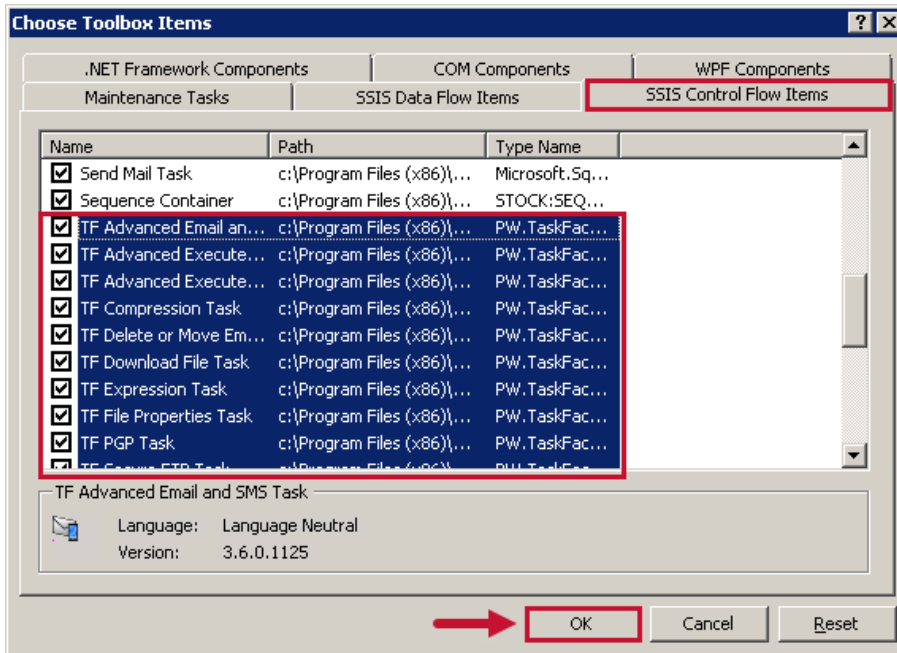
Note: Adding Task Factory components in BIDS is not necessary with SQL Server Data Tools (2012 or higher).

Complete the following steps to add the Task Factory components to your toolbox:

1. Open an SSIS package, then open your toolbox (**View > Toolbox**).
2. Right click the toolbox window and select **Choose Items...**



3. Select the **SSIS Control Flow Items** tab and select all deselected tasks that begin with **TF**. Next, follow the same step with the **SSIS Data Flow Items** tab.
4. After you have selected all Task Factory **Control Flow** and **Data Flow** items, select **OK** to save and confirm your selections.

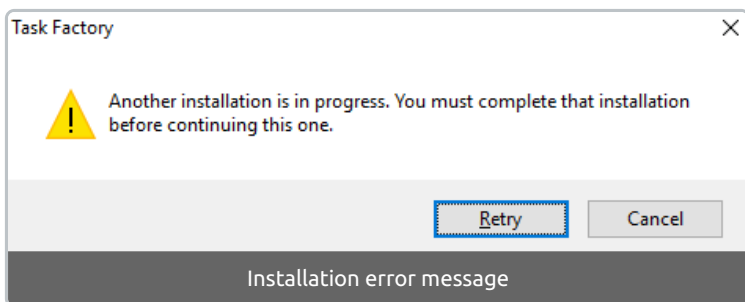


Troubleshooting

Another installation is in progress

If you receive this popup while installing Task Factory:

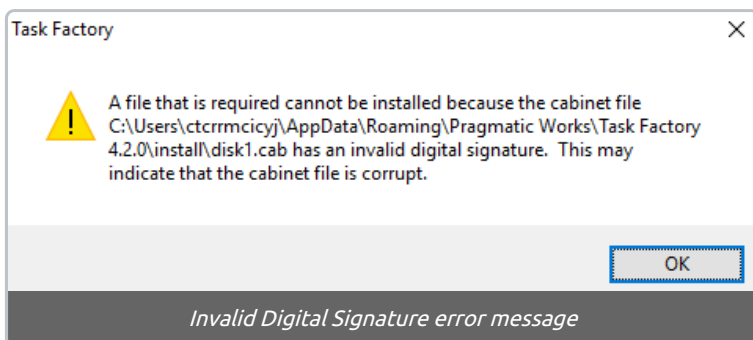
1. Check **Task Manager** to see if another installation of Task Factory is running. If so, choose **End Task**.
2. Restart the machine.



Task Factory Installer Fails To Complete Due To Invalid Digital Signature

See the article above for information about resolving issues related this error message:

A file that is required cannot be installed because the cabinet file C:\Users\...file.cab has an invalid digital signature. This may indicate that the cabinet file is corrupt.



Creating a Task Factory Installation Log

If you're experiencing other errors while installing Task Factory, see the article above for instructions to create a log file to determine where the installer is failing.