

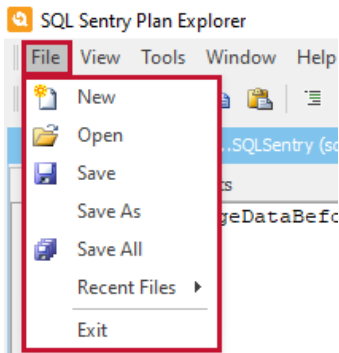
# Plan Explorer Navigation

Last Modified on 15 July 2021

The following are the primary features and information about the different tabs found within **Plan Explorer**. Since the graphical plan diagram in SSMS was used as a starting point for the design of **Plan Explorer**, some features are compared with the current capabilities of SSMS to illustrate the reasoning behind the feature.

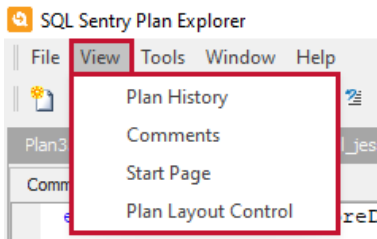
## Plan Explorer Menus

### File Menu



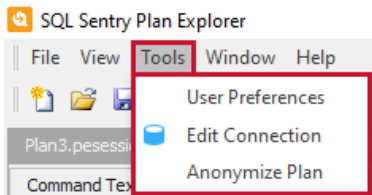
Command	Description
<b>New</b>	Creates a new <b>Plan Explorer Session</b> in a new tab.
<b>Open</b>	Opens an existing <b>Execution Plan</b> file (.sqlplan   .xml   .queryanalysis   .pesession), deadlock file, or SQL file.
<b>Save</b>	Saves the current file.
<b>Save As</b>	Saves the current file with a new name/new location.
<b>Save All</b>	Saves all files opened in any tabbed sessions.
<b>Recent Files &gt;</b>	Displays a list of recently opened files.
<b>Exit</b>	Exits the program.

### View Menu



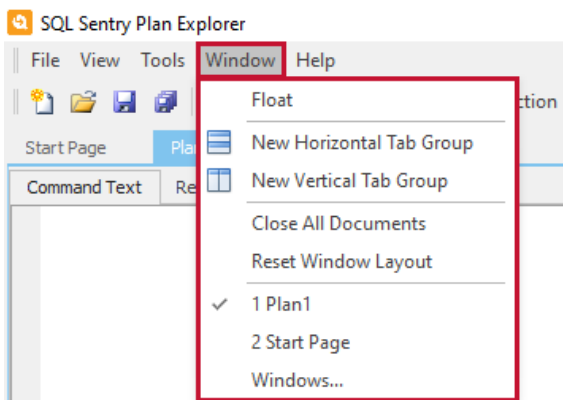
Command	Description
<b>Plan History</b>	Opens the <b>Plan History</b> pane.
<b>Comments</b>	Opens the <b>Comments</b> pane.
<b>Start Page</b>	Opens the <b>Start Page</b> pane.
<b>Plan Layout Control</b>	Opens the <b>Layout Editor</b> . Use the <b>Layout Editor</b> to customize the position of the various panes.

## Tools Menu



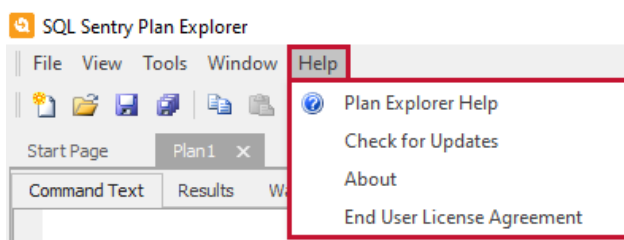
Command	Description
<b>User Preferences</b>	Allows you to edit the user preferences.
<b>Edit Connection</b>	Allows you to edit the server connection.
<b>Anonymize Plan</b>	Allows you to anonymize a .sqlplan.

## Window Menu



Command	Description
<b>Float</b>	Allows the selected panel to detach from the main window rather than being docked.  <b>Note:</b> This can also be done by dragging the panel by its titlebar.
<b>Close All Documents</b>	Closes all open query plans.
<b>Reset Window Layout</b>	Resets the windows to the default state.
<b>New Horizontal Tab Group</b>	Creates a new <b>Horizontal</b> tab group with the selected tab.
<b>New Vertical Tab Group</b>	Creates a new <b>Vertical</b> tab group with the selected tab.
<b>Move to Next Tab Group</b>	Moves the selected tab group to the next group.
<b>Move to Previous Tab Group</b>	Moves the selected tab group to the previous group.
<b>1 Plan</b>	Opens the desired query plan.
<b>Windows...</b>	Uses the <b>Windows</b> command to manage all your open windows. Uses the <b>Activate</b> command to set focus to the selected window.

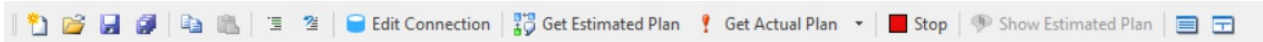
## Help Menu



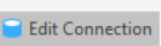
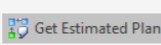
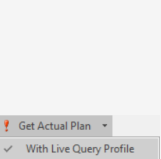

Command	Description
<b>Plan Explorer Help</b>	Opens to <b>Plan Explorer</b> in the <a href="#">SQL Sentry User Guide</a> .
<b>Check for Updates</b>	Checks for the newest version of <b>Plan Explorer</b> .
<b>About</b>	Views information about <b>Plan Explorer</b> , including build number and contact information.
<b>End User License Agreement</b>	Opens the <a href="http://www.solarwinds.com/legal/eula">www.solarwinds.com/legal/eula</a> article about licensing information.

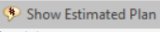


Command	Description
---------	-------------

## Toolbar

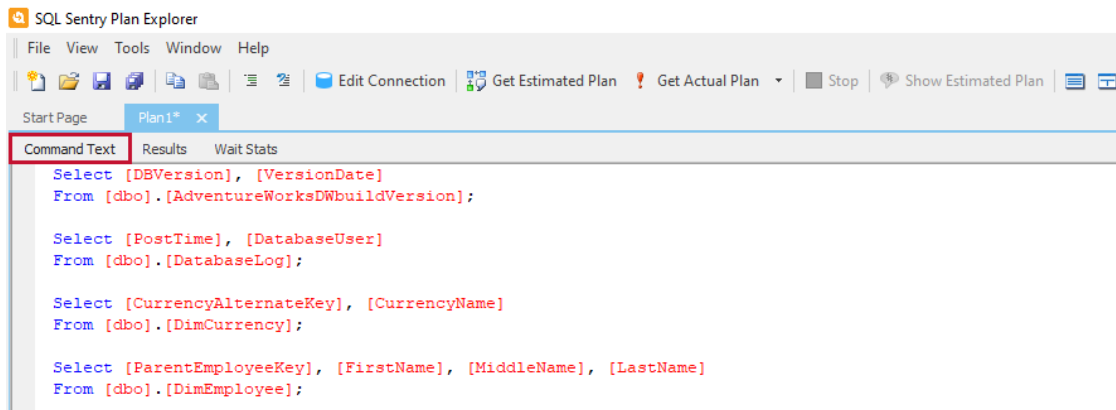


Button	Description
	<b>New</b> —Creates a new <b>Plan Explorer Session</b> in a tab.
	<b>Open</b> —Opens an existing <b>Session</b> file, <b>Execution Plan</b> , <b>Deadlock</b> , or SQL file,
	<b>Save</b> —Saves the current file.
	<b>Save All</b> —Saves all the currently open files.
	<b>Copy</b> —Copies the selected text to the clipboard.
	<b>Paste</b> —Pastes the selected text from the clipboard.
	<b>Comment selected lines</b> — Makes the selected line(s) a comment.
	<b>Uncomment selected lines</b> — Removes the comment tab from the selected line(s).

Button	Description
	Edits the current connection information.
	Generates an <b>Estimated Plan</b> . (Shortcut Key: <b>CTRL-L</b> )
	Generates an <b>Actual Plan</b> . (Shortcut Key: <b>F5</b> or <b>CTRL-E</b> )  Select the <b>With Live Query Profile</b> option from the drop-down list. A usage chart appears that plots CPU, I/O and waits.  <b>Note:</b> Disable the <b>Query Execution</b> warning message with <b>User Preferences (Tools &gt; User Preferences &gt; Warn on actual execution)</b> .
	Stops the execution of a query.

 <b>Button</b>	<b>Description</b> Toggles the <b>Plan Diagram</b> tab between the <b>Estimated</b> and <b>Actual Plan</b> .
	<b>Horizontal Layout</b> —Switches the current tab to a horizontal layout.
	<b>Vertical Layout</b> —Switches the current tab to a vertical layout.

## Command Text



The **Command Text** section shows an editable version of the query text for the statement or batch being analyzed. Make changes to the query, then see how this impacts the execution plan by selecting **Get Estimated Plan** or **Get Actual Plan** on the toolbar.

When retrieving a plan, you're asked for the server, database, and credentials to connect (unless you launched **Plan Explorer** from within SSMS using our Management Studio [Add-In](#)).

To generate the **Actual Plan**, the query is run against the target server. By design, the actual query results aren't returned to the **Plan Explorer** interface. By default, there's a message box explaining this behavior when an **Actual Plan** is captured.

**Note:** Disable the **Query Execution** warning message with **User Preferences (Tools > User Preferences > Warn on actual execution)**.

If query execution fails, a message displays in the **Status** bar, located at the bottom of the **Plan Explorer** window.