

Plan Explorer Sessions

Last Modified on 15 July 2021

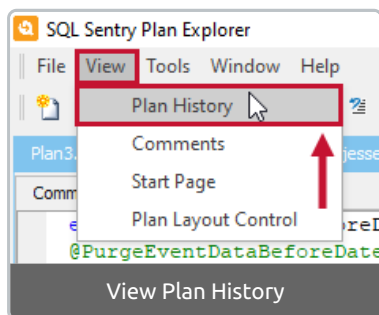
Plan Explorer introduces the concept of a **Plan Explorer Session** and its associated **Plan Explorer Session** file (**.pesession**). Plan Explorer Session files are completely portable, and contain a record of the entire session, including versioning.

Plan Explorer Sessions are designed to help you manage a historical record as you refine queries. By default, a historical entry generates as part of the **Plan Explorer Session** during **Estimated** and **Actual Plan** retrieval.

Note: Change how **Plan Explorer** generates new historical entries through **User Preferences (Tools > User Preferences > Performance Analysis** tab). The **Only save history when command text or Instance settings change** option controls this behavior.

Version History

Each historical entry retains all captured plan details and metrics within the various **Plan Explorer** tabs. Each version is associated with a unique version number. **Plan Explorer** includes a **Plan History** pane (**View > Plan History**) that allows you to navigate through the different versions within the active **Plan Explorer Session**. To delete a version, select **Delete** in the **History** pane context menu.

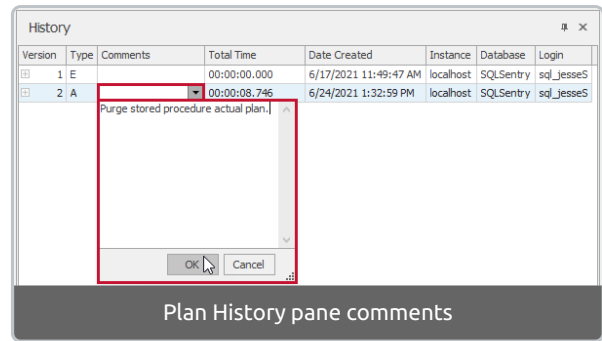
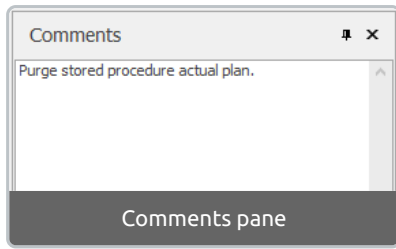


Version	Type	Comments	Total Time	Date Created	Instance	Database	Login
1	E		00:00:00.000	6/17/2021 11:49:47 AM	localhost	SQLSentry	sql_jesseS
2	A		00:00:08.746	6/24/2021 1:32:59 PM	localhost	SQLSentry	sql_jesseS

Note: The **Status** bar, located at the bottom of the **Plan Explorer** window, updates as actions are taken, including each time a new historical version is loaded.

Adding Comments

Plan Explorer allows you to add comments to each historical version (**View > Comments**). This allows you to keep track of the reasoning behind any changes you make, like changes to the **Command Text** or any indexing optimization. You can also add comments in the Plan History pane by selecting the **Comments** drop-down list.



Multiple Sessions and Tabs

As each session is managed within its own tab, multiple **Plan Explorer Sessions** can be open at the same time. SQL Sentry Plan Explorer was designed with a multiple document interface, allowing you several options when managing tabbed sessions, including the ability to arrange tabs horizontally and vertically, and the ability to tear off tabs. **Tab Windowing** options are found in the **Window** menu.

Sharing Session Files

Plan Explorer Session files are easily shared with others, even if they don't have access to the full SQL Sentry client.

SQL Sentry **Plan Explorer** is a stand-alone query analysis tool. **Plan Explorer** uses session files to manage history, just like the integrated **Plan Explorer**, and contains complete support for opening **Plan Explorer Session** files generated in the SQL Sentry client.

Plan Explorer also opens session files in a limited fashion. When you open a **Plan Explorer Session** file (**.pesession**) for the first time in **Plan Explorer**, it'll by default open the first history entry. If you've opened the session file previously, it'll open the last history item you were viewing. You can easily switch between history items using **View > Plan History**.

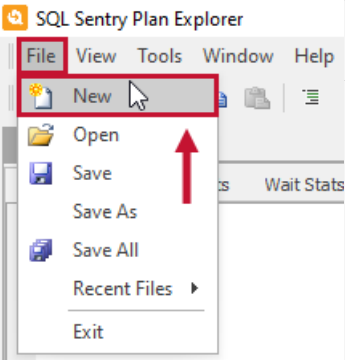
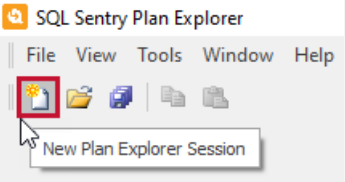
This is possible because each historical entry in a **Plan Explorer Session** is actually a **.queryanalysis** file. **Plan Explorer Session** files are archive files, containing the individual **.queryanalysis** files and metadata about the session.

Note: Save any single historical entry of a **Plan Explorer Session** as a stand-alone **.queryanalysis** file. With the entry you wish to save as active, select **Save As (File > Save as)**, and then choose the desired file type.

Starting a New Session



Start a new **Plan Explorer Session** by completing any of the following:

Option	Image

Option	Image
Select File > New	 <p>A screenshot of the SQL Sentry Plan Explorer application window. The 'File' menu is open, and the 'New' option is highlighted with a red box. A red arrow points upwards from the 'New' option.</p>
Select Toolbar > New Plan Explorer Session icon, or drag-and-drop a plan file onto the application.	 <p>A screenshot of the SQL Sentry Plan Explorer application window. The toolbar is visible, and the 'New Plan Explorer Session' icon (a document with a plus sign) is highlighted with a red box. A tooltip is visible over the icon.</p>

Saving a Session

Save a **Plan Explorer Session** by completing either of the following:

Option	Image
Select File > Save / Save As	 <p>A screenshot of the SQL Sentry Plan Explorer application window. The 'File' menu is open, and the 'Save' and 'Save As' options are highlighted with a red box.</p>
Select Toolbar > Save icon	 <p>A screenshot of the SQL Sentry Plan Explorer application window. The toolbar is visible, and the 'Save' icon (a floppy disk) is highlighted with a red box.</p>

Anonymize Plans

SQL Sentry **Plan Explorer** can obfuscate the sensitive data in your plans. **Plan Anonymization** changes all **Database**, **Table**, and **Column** names in your plans to generic representations.

To use this feature, select **Tools > Anonymize Plan**.

Your original plan is preserved in the current tab, and the anonymized plan is opened in a new tab.

SQL Sentry Plan Explorer

File View Tools Window Help

Plan3_session - local...SQLSentry (sf_jesses)* Plan1_Anonymized_session

Statement	Est Cost %	Complete	Duration	UDF Duration	CPU	UDF CPU	Est CPU Cost %	Reads	Writes	Est IO Cost %	Est Rows	Actual Rows	Key Lookups	R/D Lookups
[DELETE Schema2.Object4 FROM (SELECT TOP ? Column5, Column6 FROM ...	0.3%	7	0	0	0	0	0.4%	0	0	0.3%	12	0	0	0
SET Variable7 = ?	0.0%	0	0	0	0	0	0.0%	0	0	0.0%	0	0	0	0
WHILE (@@rowcount > ? OR Variable7 = ?)	0.7%	0	0	0	0	0	1.2%	0	0	0.6%	0	0	0	0
SET Variable7 = ?	0.0%	0	0	0	0	0	0.0%	0	0	0.0%	0	0	0	0
WHILE (@@rowcount > ? OR Variable7 = ?)	0.5%	0	0	0	0	0	0.1%	0	0	0.5%	0	0	0	0
SET Variable7 = ?	0.0%	0	0	0	0	0	0.0%	0	0	0.0%	0	0	0	0
WHILE (@@rowcount > ? OR Variable7 = ?)	3.0%	0	0	0	0	0	7.5%	0	0	2.7%	0	0	0	0

```

WAITFOR DELAY ?
DELETE Schema2.Object4
FROM (SELECT TOP ? Column5, Column6
      FROM Schema2.Object4
      WHERE Column7 = Variable15) Object5
WHERE Schema2.Object4.Column5 = Object5.Column5 AND Schema2.Object4.Column6 = Object5.Column6
END
SET Variable7 = ?
WHILE (@@rowcount > ? OR Variable7 = ?)

```

Plan Diagram

Zoom: 140.2% Filter: 0.0% Stretch: 4.0 Flatten: 0.0 Mode: Normal Link Style: Angled Auto-Fit: Defaults

Plan Diagram Plan Tree Top Operations Query Columns Join Diagram Parameters Expressions Table I/O Index Analysis

Ready Compile Time: N/A Total Time: 00:00:00.000 Actual Rows: 0

Note: For more information, see the [Anonymize your plan details natively in Plan Explorer](#) blog post.