

SQL Sentry Virtual Machine Support

Last Modified on 06 January 2022

Hyper-V Support

After monitoring a Hyper-V guest target with SQL Sentry, the host of that target appears under the **Virtualization** node in the **Navigator** pane.

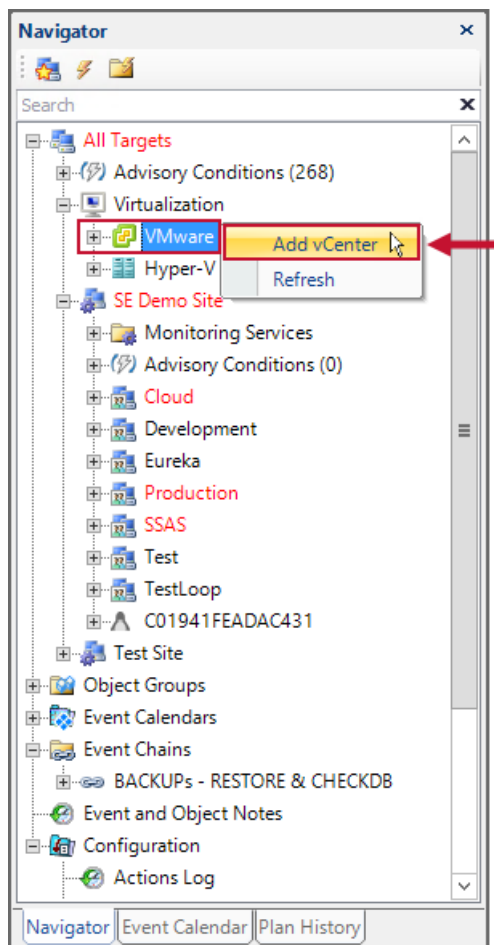
When a Hyper-V host target is monitored, the host and all of the host's guests will appear under the **Virtualization** node in the **Navigator** pane. Additionally, memory ballooning and vCPU information are presented on the dashboards on Hyper-V Guest targets. The host information is provided on the dashboard as well.

VMware Support

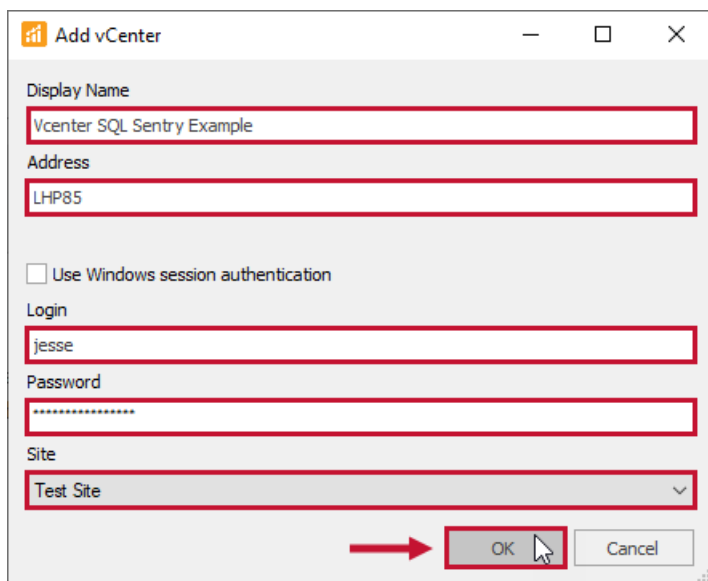
⚠ Important: If using SSPI authentication, be sure to select a site where the monitoring service has at least **read-only access** to the vCenter.

To enable VMware support, a vCenter must be added. Complete the following steps to add a vCenter:

1. Right-click on the **VMware** node under the **Virtualization** node in the **Navigator** pane.



2. Select **Add vCenter** to open the **Add vCenter** dialog box. Enter the appropriate information, and then select **Ok** to save the vCenter.



The screenshot shows a dialog box titled "Add vCenter". It contains the following fields and controls:

- Display Name:** A text box containing "Vcenter SQL Sentry Example".
- Address:** A text box containing "LHP85".
- Use Windows session authentication:** An unchecked checkbox.
- Login:** A text box containing "jesse".
- Password:** A text box with a masked password (dots).
- Site:** A dropdown menu with "Test Site" selected.
- Buttons:** "OK" and "Cancel" buttons at the bottom right. A red arrow points to the "OK" button.

Once the vCenter has been added, any VMware guest targets display the following metrics on their dashboards:

- CPU Ready Time
- Co-Stop
- Memory ballooning

⚠ Important: When adding a vCenter to a site with multiple monitoring services, it's recommended that you use a local vSphere account to avoid potential overhead associated with Windows session authentication.

Virtual Machine Performance Counters

Virtual machine performance counters are available for use in **Custom Conditions**, and are available for viewing in the **Performance Counter History Report**.

📌 Note: Memory ballooning information is only available for guests with dynamic memory enabled. vCPU information only displays on the sample mode dashboard CPU charts if the value is > one percent.