

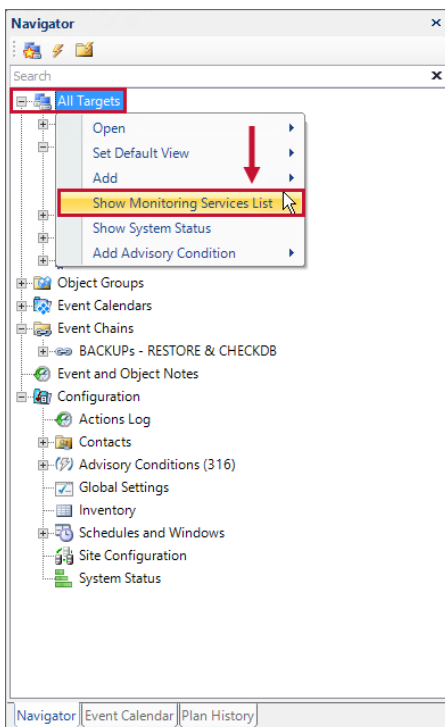
Monitoring Service Load Balancing

Last Modified on 30 July 2021

Note: See the [Installing Additional Monitoring Services](#) section of the [Installation](#) article for step-by-step instructions on adding more monitoring services to your SQL Sentry enterprise.

Load Balancing

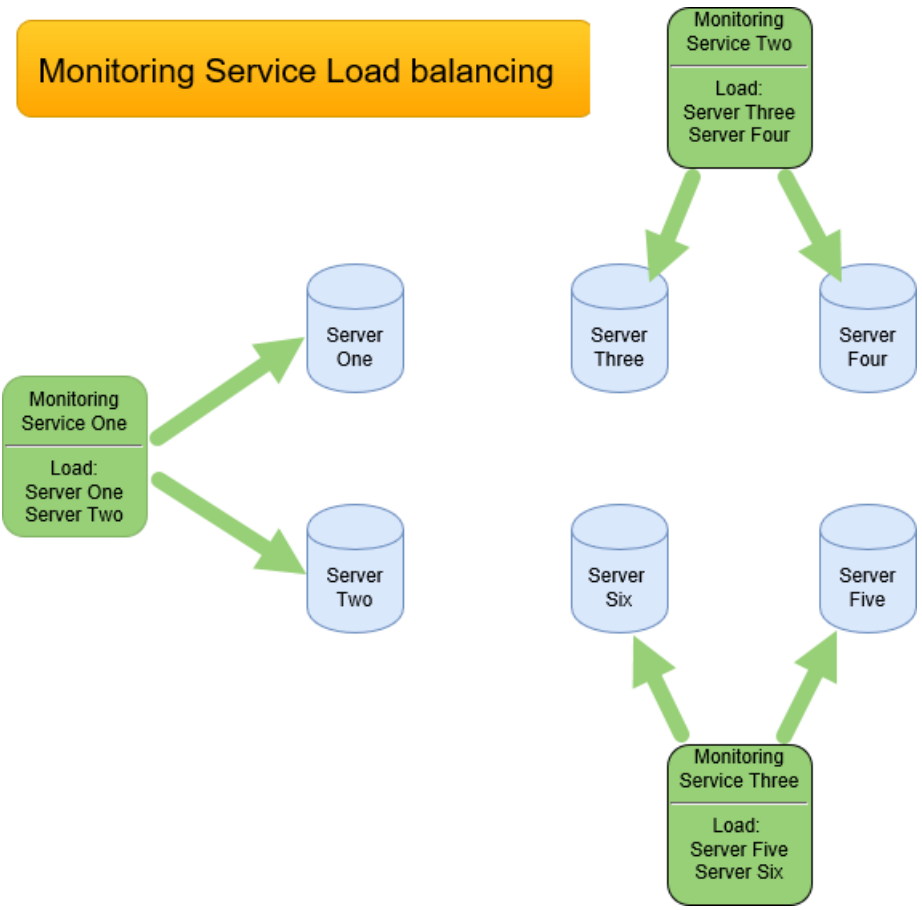
SQL Sentry allows for the installation of multiple monitoring services to provide automatic load balancing and fault tolerance.



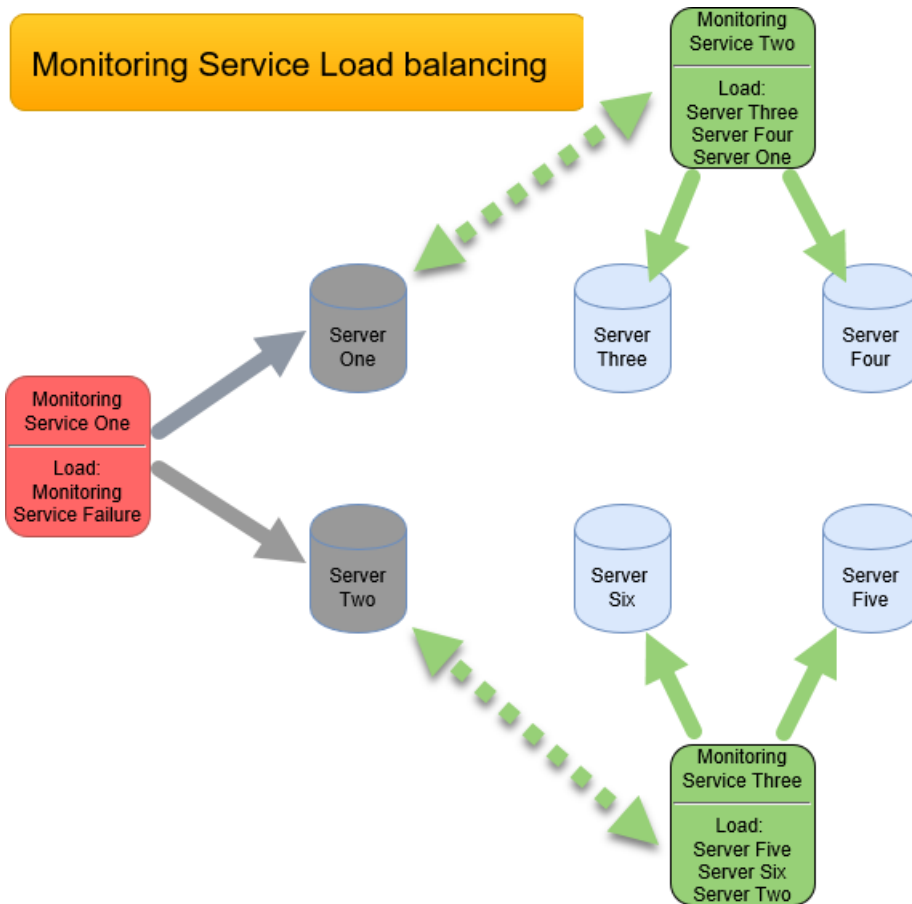
Note: There's no additional configuration required to implement this functionality.

Once an additional SQL Sentry monitoring service is installed and connected to the same SQL Sentry site during setup, they automatically distribute the monitoring load evenly between themselves, providing automatic fault tolerance and load balancing. If one SQL Sentry monitoring service fails, the remaining SQL Sentry monitoring services pick up the load automatically.

Monitoring Service Load balancing

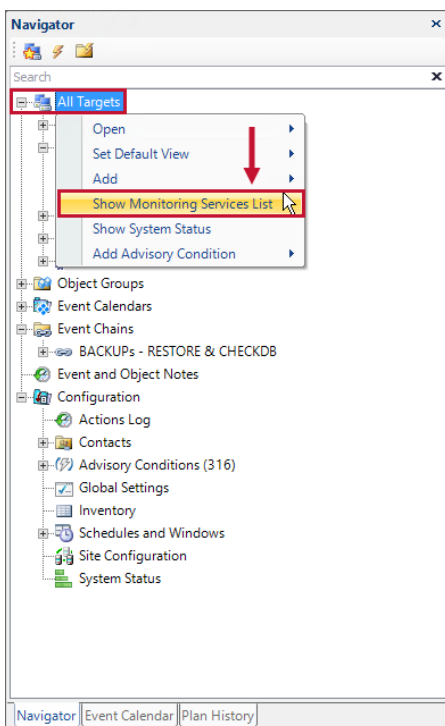


For example, if there are three SQL Sentry monitoring services associated with six servers all contained within the same [site](#), the SQL Sentry monitoring services divides the servers evenly among themselves, each managing two. If one SQL Sentry monitoring service fails, the other two services would pick up the unmanaged targets and divide the remaining two between themselves.



Monitoring Services List

To view the status of all SQL Sentry monitoring services, right-click **All Targets** in the **Navigator** and select **Show Monitoring Services List**.



The **Monitoring Services List** displays all of the monitoring services by server name. From this view, you can

see the last heartbeat, account and server stats, as well as the number of monitored targets for each monitoring service.

Server	Site	Last Heartbeat (UTC)	Last Initialized (UTC)	Service Account	Product Version	Windows Version	Physical Memory (MB)	Available Memory (MB)	Service Memory Used (MB)	Monitored Targets	Process ID
VM-SE-WINMON1	SE Demo Site	3/19/2020 6:36:48 PM	3/11/2020 2:59:38 PM	VMWDEMO	20.0.0.0	Microsoft Windows NT 6.2.9200.0	8,191.0	5,990.0	818.7	12	2620
VM-SE-WINSRV2	SE Demo Site	3/19/2020 6:36:46 PM	1/24/2020 10:31:37 PM	VMWDEMO	20.0.0.0	Microsoft Windows NT 6.2.9200.0	8,191.5	5,185.5	864.2	12	4408

Note: You can also access the **Monitoring Services List** by right-clicking a site node in the **Navigator** to view the monitoring services for only that site.