

Monitoring Service Logon Account

Last Modified on 30 July 2021

Warnings and Notes

⚠ Warning:

- Running the **Service Configuration Utility** is the only supported way of changing the stored monitoring service credentials. Changing the security account using the services applet in the **Windows Control Panel** causes the service to fail and isn't supported. The service appears to be running, but is unable to perform any work due to an encryption error.
- Do not use the **Service Configuration Utility** if you are using the **EPI version** of SQL Sentry. Refer to the [EPI Commands](#) article for instructions on using the **update** command to change a password or service account.

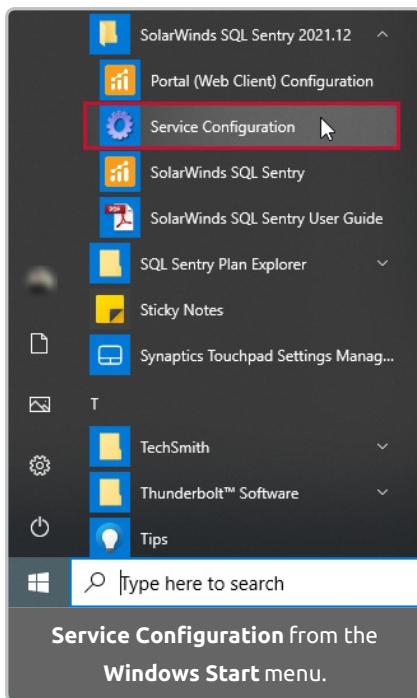
📌 **Note:** To only update a password, use the services applet in the **Windows Control Panel**.

🔗 **Additional Information:** For more information about the different requirements for the monitoring service logon account, see the [Monitoring Service Security](#) topic.

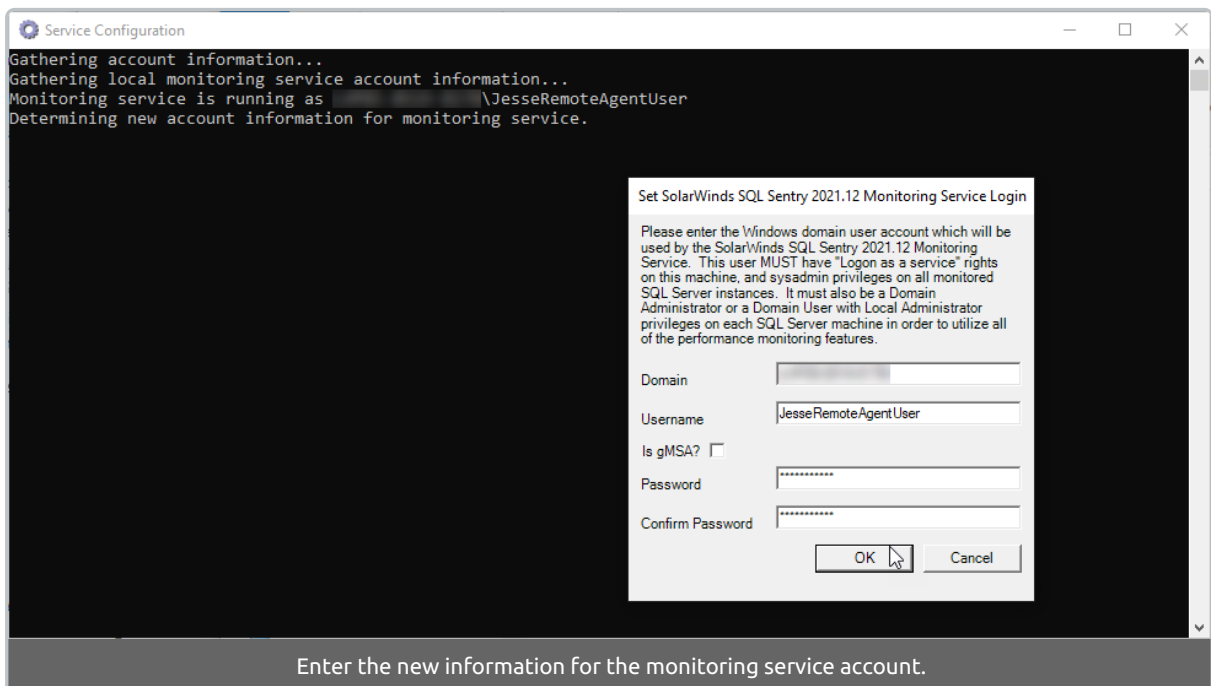
Instructions

The **Service Configuration Utility** is used to change the stored credentials of the SQL Sentry monitoring service. If the user account used by the monitoring service needs to be changed, the SQL Sentry **Service Configuration Utility** needs to be run for the public/private key encryption to validate the change. The **ServiceConfiguration.exe** utility is in the SQL Sentry program group on the **Start** menu. Change your SQL Sentry Monitoring Service credentials by completing the following steps:

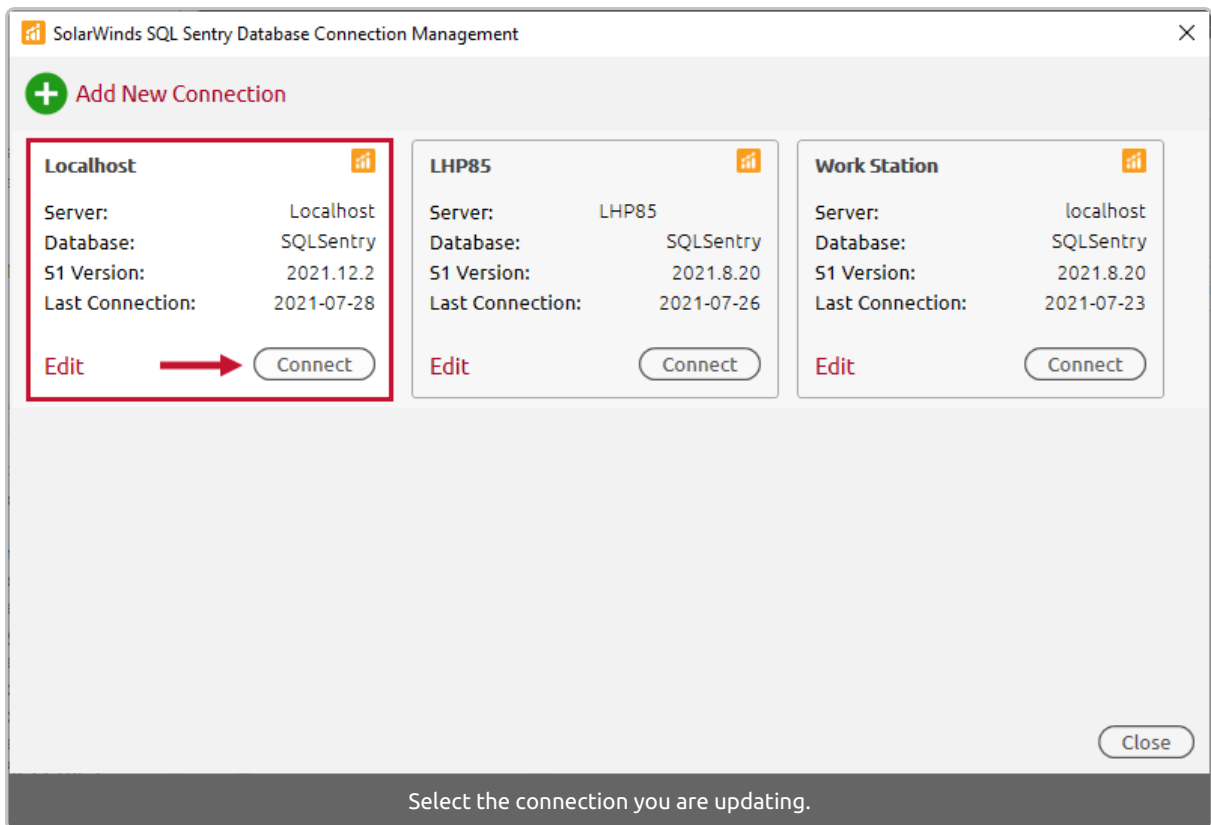
1. Run the **SentryOne.App.MonitoringService.Configuration.exe** application to open the **Set SQL Sentry Monitoring Service Login** window.



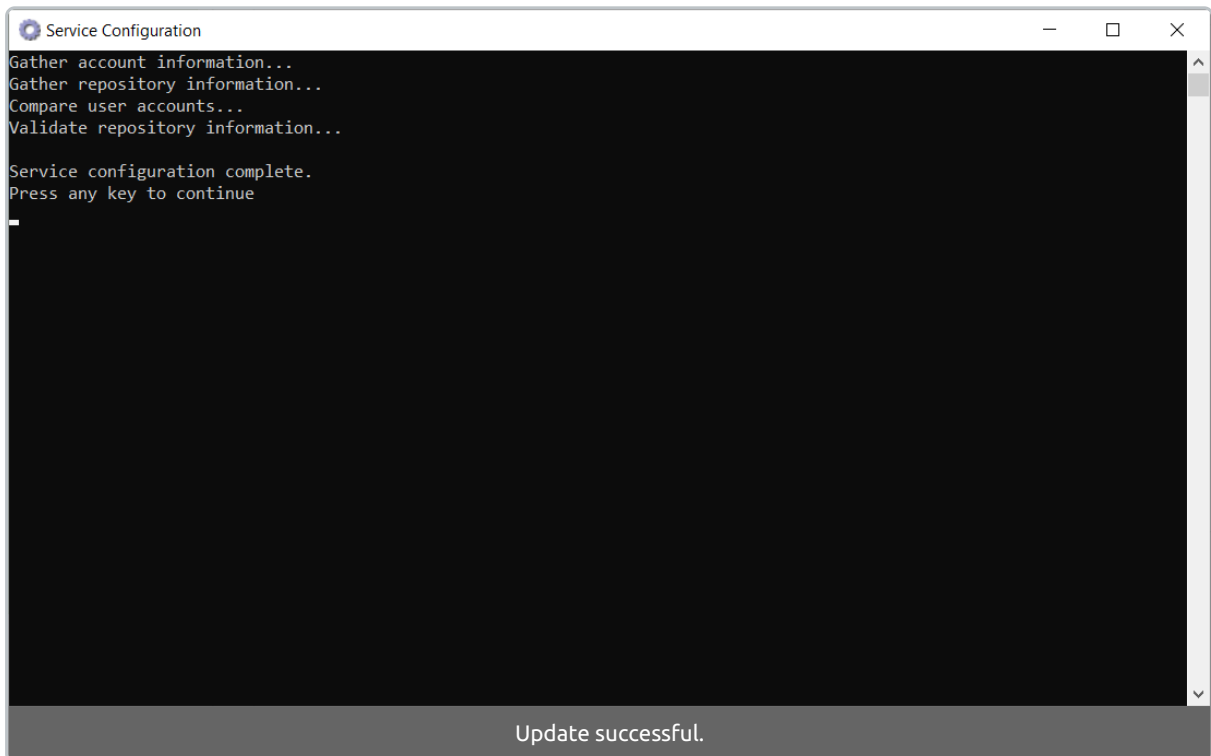
2. Enter your new password, and confirm your password in the applicable boxes on the **Set SQL Sentry Monitoring Service Login** window. Select **OK** to confirm your changes.



3. If you have more than one SQL Sentry connection, you will see the **SQL Sentry Database Connection Management** screen. Select the **Connect** button for the SQL Sentry connection you are updating.



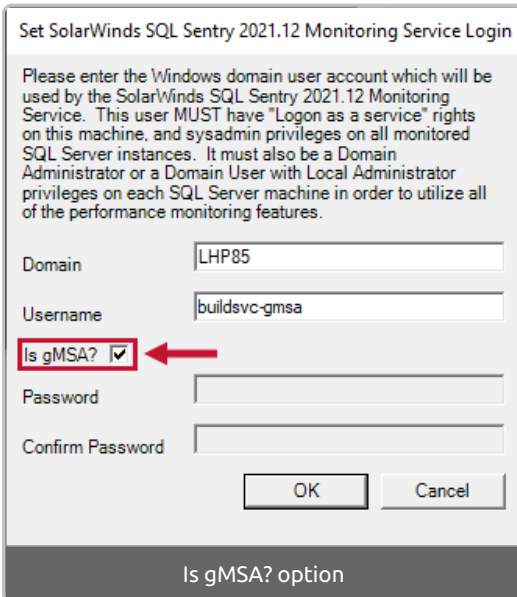
4. Press any key to exit the **Service Configuration Utility**.



👉 **Success:** If everything completes successfully, a **Service configuration complete** message displays on the **Service Configuration** command prompt window. Press any key to close out of the utility.

Using gMSA

If you are using **Group Managed Service Accounts (gMSA)** for your monitoring service account, use the **Is gMSA?** checkbox. Follow the same process as described above in the [instructions](#). When **Is gMSA?** is checked, the password fields are disabled.



Set SolarWinds SQL Sentry 2021.12 Monitoring Service Login

Please enter the Windows domain user account which will be used by the SolarWinds SQL Sentry 2021.12 Monitoring Service. This user MUST have "Logon as a service" rights on this machine, and sysadmin privileges on all monitored SQL Server instances. It must also be a Domain Administrator or a Domain User with Local Administrator privileges on each SQL Server machine in order to utilize all of the performance monitoring features.

Domain: LHP85

Username: buildsvc-gmsa

Is gMSA?

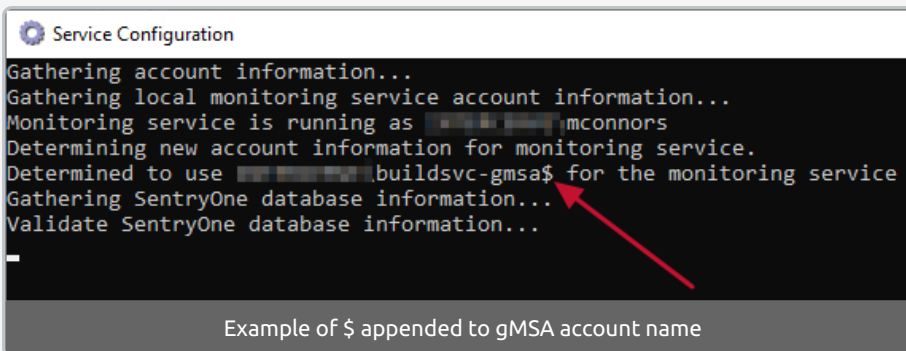
Password: [disabled]

Confirm Password: [disabled]

OK Cancel

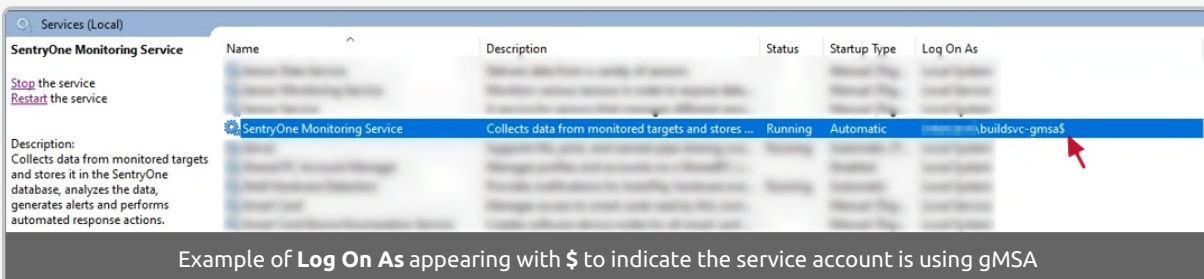
Is gMSA? option

Note: The service account will appear with a \$ after it in the **Service Configuration** message and service screen to denote that it is a **gMSA** account.



```
Gathering account information...
Gathering local monitoring service account information...
Monitoring service is running as mconnors
Determining new account information for monitoring service.
Determined to use buildsvc-gmsa$ for the monitoring service
Gathering SentryOne database information...
Validate SentryOne database information...
```

Example of \$ appended to gMSA account name



Name	Description	Status	Startup Type	Log On As
SentryOne Monitoring Service	Collects data from monitored targets and stores ...	Running	Automatic	buildsvc-gmsa\$

Example of **Log On As** appearing with \$ to indicate the service account is using gMSA

Note: **gMSA** is only available from the **Service Configuration Utility**, it is not available during the initial installation for the **SQL Sentry Unified Setup**.

Using gMSA with EPI

See the [isGmsa](#) section of the [EPI Commands](#) article for instructions and examples. EPI allows gMSA to be used during the installation and updates to the account.