

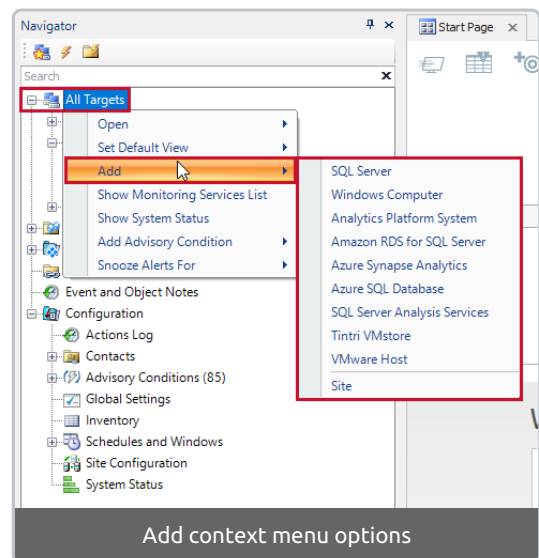
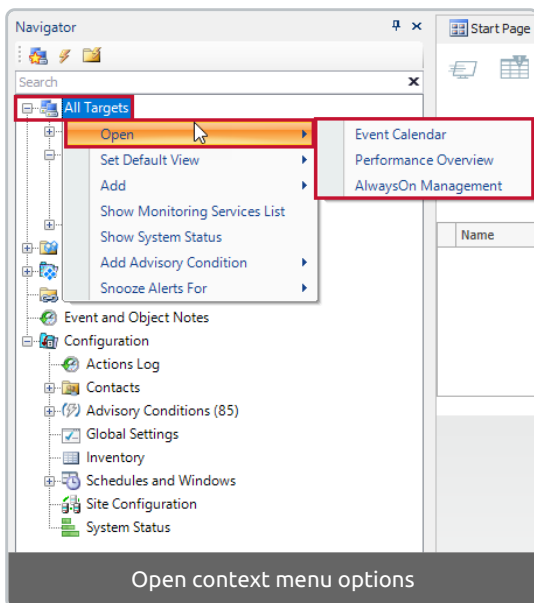
# All Targets

Last Modified on 26 August 2021

The **All Targets** node is the root node of the SQL Sentry client and is located in the top position of the **Navigator** pane. All targets that are registered across the entire SQL Sentry enterprise are found within **All Targets**.

The **All Targets** node is used to configure global conditions and settings within the SQL Sentry **Alerting and Responses System**. The **All Targets** node is also used to view **Event Calendar**, **Performance Overview**, or **AlwaysOn Management**.

## All Targets Context Menu



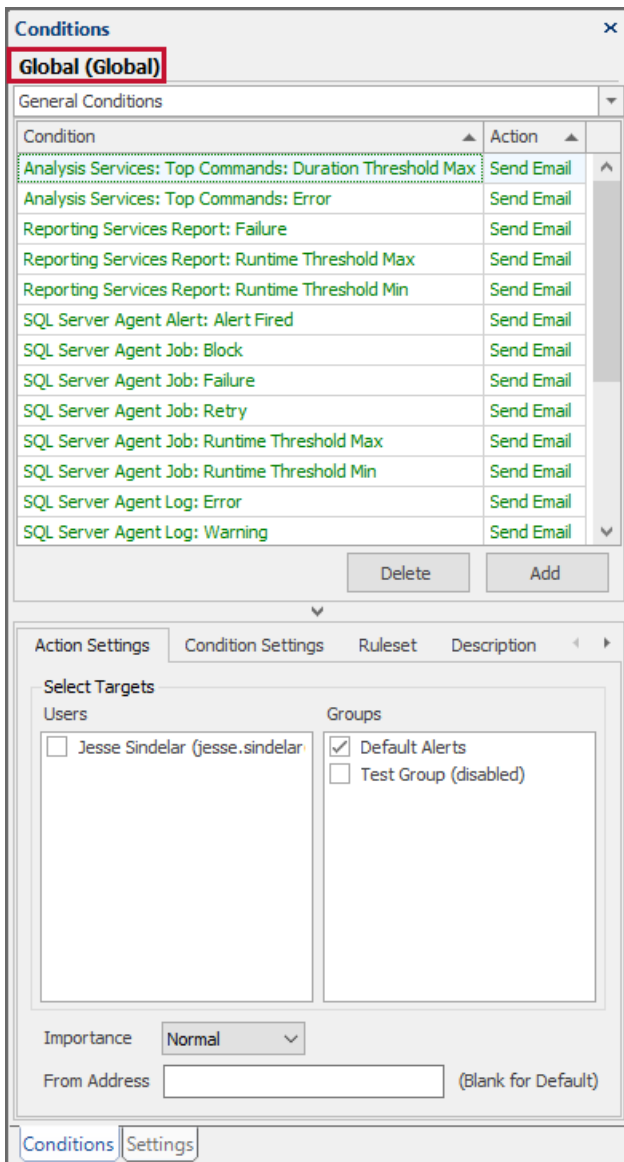
Right-click on the **All Targets** node to access its context menu. The following commands are available:

Command	Description	More Information
---------	-------------	------------------

Command	Description	More Information
<b>Open &gt; Event Calendar</b>	Opens the global event manager view of your SQL Sentry enterprise.	<a href="#">Event Calendar</a>
<b>Open &gt; Performance Overview</b>	Opens the shared <b>Performance Overview</b> .	<a href="#">Performance Analysis Overview</a>
<b>Open &gt; AlwaysOn Management</b>	Opens the <b>AlwaysOn Management</b> environment.	<a href="#">Performance Analysis Always On</a>
<b>Add &gt; Site</b>	Adds a new <b>Site</b> node beneath the <b>Shared Groups</b> node.	<a href="#">Site Configuration Default Site</a>
<b>Add &gt; Connection</b>	Adds a new connection to the <b>Default Site</b> .	<a href="#">Connections Default Site</a>

## Global Level of the Alerting and Response System

The **All Targets** node is used to configure global conditions and settings within the SQL Sentry [Alerting and Responses System](#). When the **All Targets** node is selected in the [Navigator pane](#), the associated global level **Conditions** and **Settings** pane is available. If you don't see the **Conditions** and **Settings** pane when the **All Targets** node is selected, use the [View menu](#) to bring up the desired pane. [Conditions](#) and settings configured at the **All Targets** level are global in nature. This means that when a condition or setting is set at the **Shared Group** level, it automatically propagates down throughout your SQL Sentry environment.

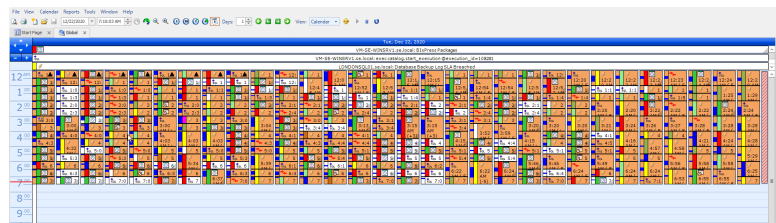
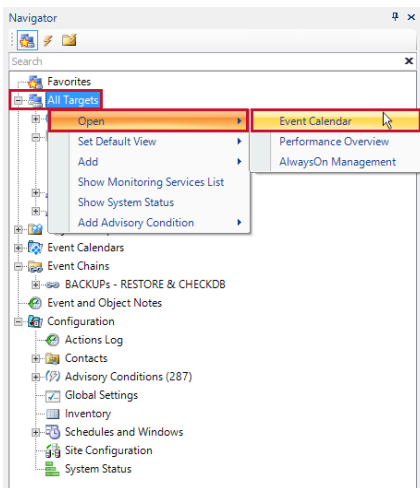


For example, configure a [send email action](#) for the [SQL Agent Job: Failure condition](#) at the **All Targets** global level. An email is now sent anytime an agent job fails across your entire monitored environment.

Once global [conditions](#) and settings are configured, more granular configurations can be made where they are needed at the lower levels. For more details on how global conditions and settings are inherited throughout your SQL Sentry environment, and information about configuring alerting for your SQL Sentry installation, see the [Alerting and Responses System](#) topic.

## Global Views

Access global views in your SQL Sentry enterprise through the **All Targets** node. This is done by either double-clicking the **All Targets** node or by using its right-click context menu. The default number of days for the **Global Calendar** view is one day and can be adjusted in [User Preferences](#).



The primary purpose of the global views is to give you insight into what's happening across your enterprise without having to open individual **Event Calendars** or **Performance Analysis Dashboards** at the target level.

**Note:** Future and running events are disabled in the global **Event Calendar** view. Adjust the runtime filter and other filter criteria on the **Event View** filter tab to further refine the display for personal preferences.

For more information about the shared targets performance analysis overview, see the [Performance Analysis Overview](#) topic.

## All Targets Child Nodes

### Default Site

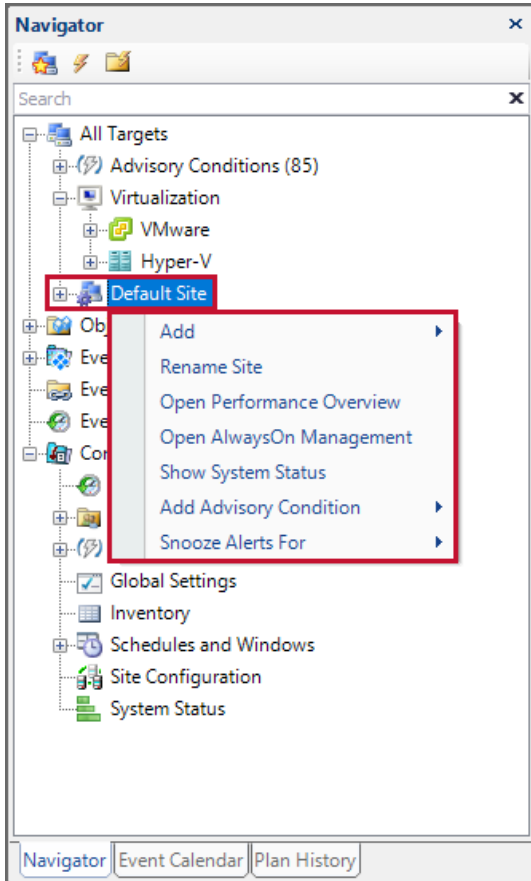
Sites represent a logical grouping of targets, instances, and monitoring services within your SQL Sentry environment. If you're upgrading from a previous version of SQL Sentry, you'll notice that the sites displayed beneath the **All Targets** node directly reflect those sites you previously configured within the **Site Configuration** node. If you're a new user, notice that the instances added using the quick start wizard are all contained in the **Default Site** node.

When a **Site** node is selected in the **Navigator** pane, the associated site level **Conditions** and **Settings** pane are available. If you don't see the **Conditions** and **Settings** pane when the **Site** node is selected, use the **View menu** to bring up the desired pane.

**Note:** Conditions and settings configured at the site level apply to all targets, instances, and objects in that site. This means that when a condition or setting is configured at the site level, it automatically propagates down throughout that site.

### Site Context Menu

Right-click on any **Site** node to access its context menu. The following commands are available:



Command	Description	More Information
<b>Add</b> > Target	Adds a new <u>target</u> to the selected site.	<a href="#">Targets</a>
<b>Add</b> > Group	Adds a new <u>target group</u> to the selected site.	<a href="#">Targets</a>
<b>Add</b> > Connection	Adds a new connection to the selected site.	<a href="#">Connections</a>
<b>Delete Site</b>	<p>Deletes a site from the <b>Shared Group</b> node. Any targets or groups contained within the site must be deleted before a site can be deleted. This command is not available from the <b>Default Site</b> node.</p> <div style="border: 1px solid #ccc; background-color: #f9e7e7; padding: 5px; margin-top: 10px;"> <p><b>Warning:</b> Selecting <b>Delete Target</b> is permanent. For more information, see the <a href="#">Targets</a> topic.</p> </div>	n/a
<b>Rename Site</b>	Renames the currently selected <u>site</u> .	n/a
<b>Open Performance Analysis</b>	Opens a performance analysis overview for every target in the site.	<a href="#">Performance Analysis Overview</a>

<b>Open AlwaysOn Management Command</b>	Opens the <b>AlwaysOn Management</b> environment.	<a href="#">Performance Analysis Always On</a> <b>More Information</b>
<b>Show System Status</b>	Shows the system status for the selected site.	<a href="#">System Status</a>
<b>Add Advisory Condition &gt;Target</b>	Adds a target to an <a href="#">Advisory Condition</a> .	<a href="#">Advisory Conditions</a>
<b>Snooze Alerts For &gt; Time</b>	Allows you to select a time or day for when to snooze alerts.	n/a

## Monitoring Services

Beneath the **Default Site** node is a **Monitoring Services** node. The **Monitoring Services** node contains the [monitoring service\(s\)](#), identified by their associated target name(s) that are responsible for collecting information pertaining to the site.

Server	Site	Last Heartbeat (UTC)	Last Initialized (UTC)	Service Account	Product Version	Windows Version	Physical Memory (MB)	Available Memory (MB)	Service Memory Used (MB)	Monitored Targets	Process ID
VM-SE-WINMCH1	SE Demo Site	12/22/2020 1:03:18 PM	12/12/2020 3:46:39 AM	VMWDEMO	2020.16.21.16532	Microsoft Windows 10.0.14393	8,191.0	5,815.2	741.1	14	2472
VM-SE-WINSRV2	SE Demo Site	12/22/2020 1:03:18 PM	12/12/2020 3:27:13 AM	VMWDEMO	2020.16.21.16532	Microsoft Windows 10.0.14393	8,191.5	6,104.2	1,129.0	14	2760

**Note:** The SQL Sentry monitoring service is a Windows service that's responsible for collecting event history, event status, and performance related information and storing that information in the [SQL Sentry database](#). Monitoring services are also responsible for sending notifications based on events.

The Monitoring service(s) within a site are responsible for gathering information about those [watched](#) targets and instances contained within that same site. Assign available monitoring services to sites either through the **Site Configuration** node or by dragging and dropping a monitoring service within the **Navigator** pane. This enables you to control exactly which monitoring services [watch](#) what targets.

**Note:** Monitoring services can be critical for scenarios where you have multiple servers located at different geographic locations. Having a monitoring service for each geographic location minimizes network traffic across the WAN.

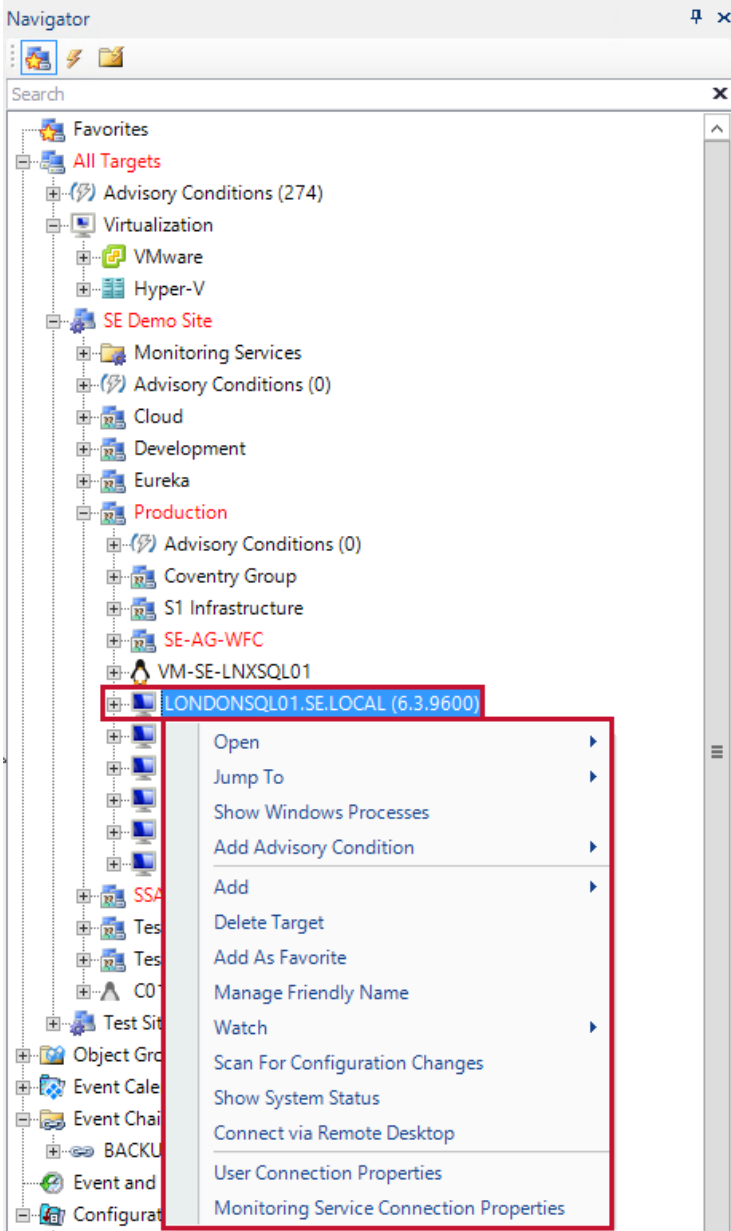
**Additional Information:** For more information, see the [monitoring service](#) and [site configuration](#) topics.

## Targets Nodes

Beneath every **Site** node are its associated **Target** nodes, identified with the target's full name, usually *ComputerName.DomainName*. Each **Target** node represents a physical computer, commonly a Windows server within your SQL Sentry environment. Commonly beneath every **Target** node in the **Navigator** pane are its associated instances.

Double-click any **Target** node to access its related [Performance Analysis Dashboard](#) or [Event Calendar](#).

## Targets Context Menu



Right-click on any **Target** node to access its context menu. The following commands are available:

Command	Description	More Information
<b>Open &gt; Event Calendar</b>	Opens the <b>Event Calendar</b> view for the associated <u>target</u> .	<a href="#">Event Calendar</a>
<b>Open &gt; Performance</b>	Opens the <b>Performance Analysis Dashboard</b>	<a href="#">Performance Analysis</a>

Analysis Command	Description	Dashboard More Information
<b>Show Windows Processes</b>	Launches a <b>Process Activity</b> window similar to <b>Windows Task Manager</b> for the associated target.	<a href="#">Windows Process Activity</a>
<b>Add &gt; Instance</b>	Adds a new <u>instance</u> to the <b>Default Site</b> .	n/a
<b>Delete Target</b>	<p><b>⚠ Warning:</b> This command deletes the actual registration for the target from SQL Sentry. This includes the deletion of all historical information for any associated connections belonging to the target from the SQL Sentry database. This command is final and cannot be undone. Only use this command if you want to permanently delete information SQL Sentry has stored about the target and its associated connections from the SQL Sentry <u>database</u>.</p> <p>When deleting a target, you must first stop watching the target and instances. See the <a href="#">Stop Watching Targets</a> article for more information.</p>	n/a
<b>Jump to &gt; Time</b>	Allows you to select a date, time of day, and time frame for an <b>Event Manager Calendar</b> .	n/a
<b>Scan for Configuration Changes</b>	This scan looks for any hardware, network, or schema changes that have taken place on the target or its associated instances. This information is automatically gathered periodically.	n/a

## Target Conditions and Settings

Within the framework of the [Alerting and Responses System Hierarchy](#), targets represent a level between sites and instances. This means that when a condition or setting is configured at a target level, it automatically propagates down to its associated instances and objects.

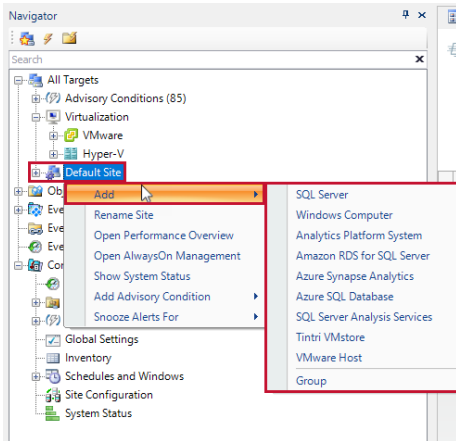
If you don't see the **Conditions** and **Settings** pane when a **Target** node is selected, use the **View menu** to bring up the desired pane.

**ⓘ Note:** Conditions and settings configured at the target level apply to all instances and objects beneath that target. This means that when a condition or setting is configured at the target level, it automatically propagates down to its associated instances and objects.



## Adding a Target to your Environment

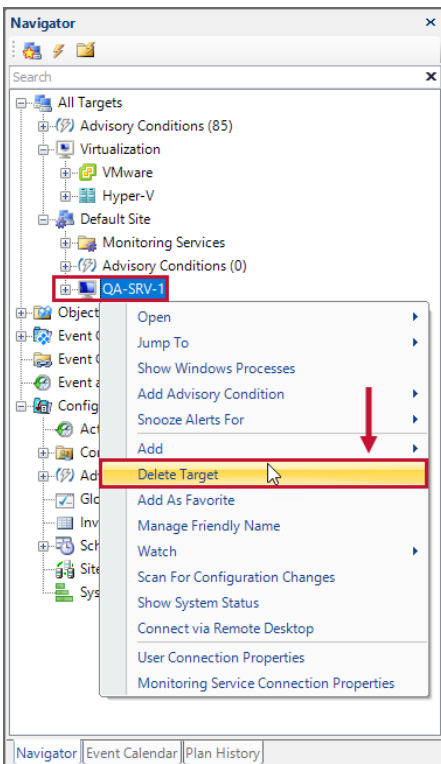
Add a new target to your installation by selecting **Add** in the right-click context menu of any **Site** node.



## Deleting a Target From Your Environment

Delete a target from your installation by selecting **Delete Target** in the right-click context menu of any **Target** node.

When deleting a target, you must first stop watching the target and instances. See the [Stop Watching Targets](#) article for more information.

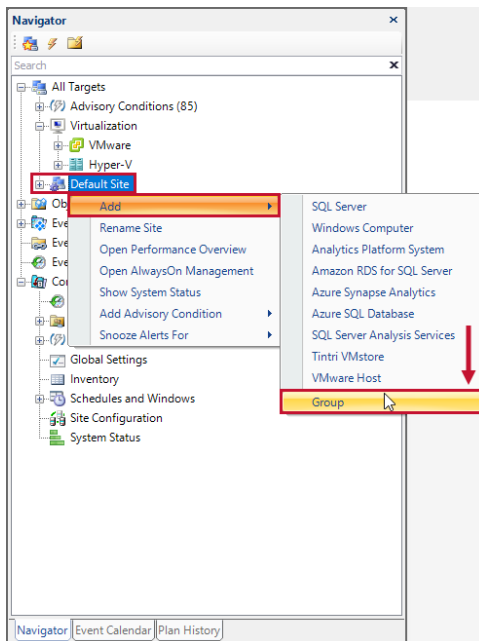


**⚠ Warning:** The **Delete Target** command deletes the actual registration for the target from SQL Sentry. This includes the deletion of all historical information for any associated instances belonging to the target

from the SQL Sentry database. This command is final and cannot be undone. Only use this command if you want to permanently delete information SQL Sentry has stored about the target and its associated instances from the SQL Sentry database.

## Target Groups

Targets can be organized into target groups beneath any **Site** node. A target group allows you to create logical groups of devices for alerting, organizational, and display purposes. Use the **Add Target Group** command in the right-click context menu of any **Site** node to add a target group.

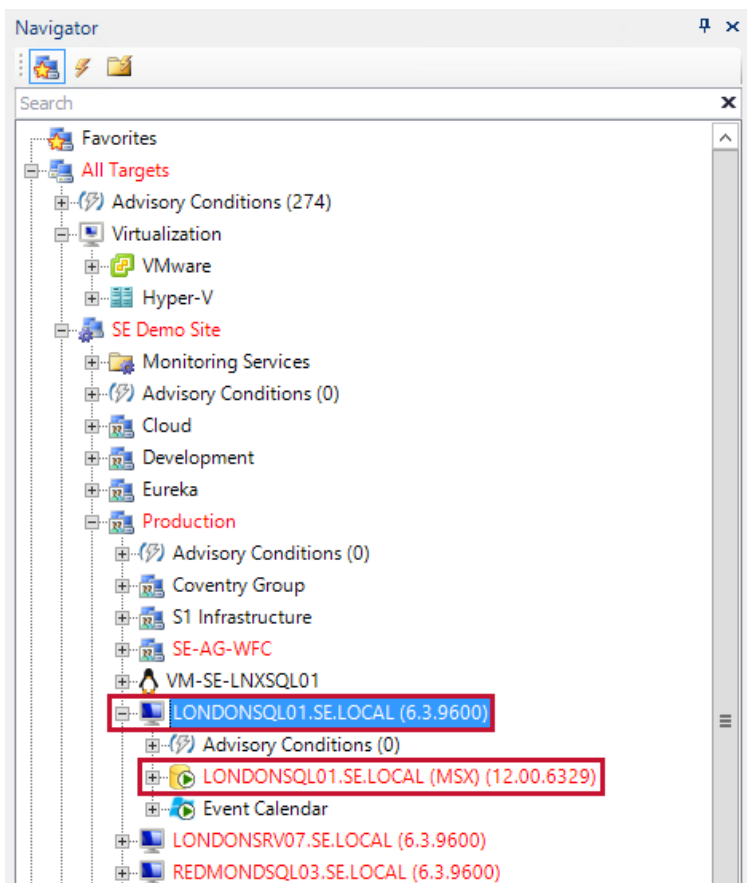


## Target Group Conditions and Settings

Within the framework of the [Alerting and Responses System Hierarchy](#), target groups represent an intermediate level between the site and target. This means that when a condition or setting is configured at a target group level, it automatically propagates down to its associated targets, instances, and objects.

## Instance Nodes

Contained beneath every **Target** node are its associated **Instance** nodes. Instances are identified by their target/instance name. Contained beneath every **Instance** node are its associated objects.



## Instances, Actions, and Settings

Within the framework of the [Alerting and Responses System Hierarchy](#), instances represent the level above objects. This means that when a condition or setting is configured at an instance level, it automatically propagates down to its associated objects.

When an **Instance** node is selected in the **Navigator** pane, the associated **instance** level in the **Conditions** and **Settings** pane is available. If you don't see the **Conditions** and **Settings** pane when an **Instance** node is selected, use the [View menu](#) to bring up the desired pane.

**Note:** Conditions and settings configured at the **Instance** level apply to all objects belonging to that instance. This means that when a condition or setting is configured at the instance level, it automatically propagates down to its associated objects.

## Adding an Instance to Your Environment

Add additional monitored instances to your SQL Sentry environment by right-clicking either the **All Targets** node, a **Site** node, a **Target Group** node, or an existing **Target** node in the **Navigator** pane, and then select **Add**, or select **File** to add an instance. In the **Add** dialog box, choose the desired instance type from the drop-down menu, and then select **Connect**. For more information, see the [Monitoring Additional Targets](#) topic.

