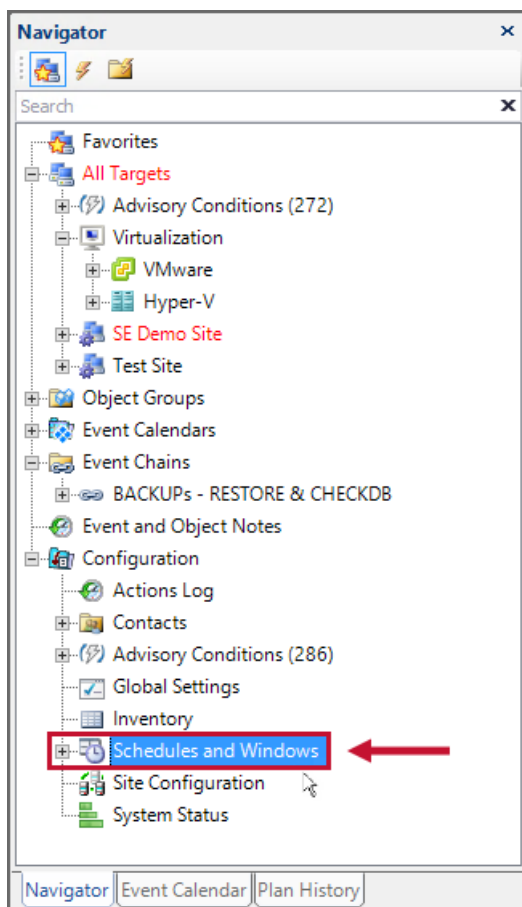


Schedules and Windows

Last Modified on 26 August 2021

Introduction

SQL Sentry employs extensive scheduling capabilities through its **Schedules** and **Windows** features. **Schedules** and **Windows** can be managed through their respective nodes found in the **Navigator** pane.



Schedules has the following application within SQL **Windows** has the following applications within SQL

Sentry:

- Fragmentation Manager Operations

Sentry:

- Maintenance Windows
- Email and Pager Windows for Users and Groups
- Ruleset Windows for Configured Actions

Schedules

SQL Sentry allows you to create **Schedules** that can be applied in the following place:

Scenario	Description
Fragmentation Manager Operations	<p>Enable Fragmentation Manager in your SQL Sentry environment, and then select a schedule to perform Fragmentation Manager Operations. This schedule is initially specified in the Fragmentation Manager wizard. After enabling Fragmentation Manger for an instance, access the applied schedule through the Index Defragmentation settings found in the Settings pane (View > Settings).</p> <p>Note: Index Defragmentation settings, including the applied schedule, can be configured at the following levels: All Targets (Global), <u>site</u>, <u>target group</u>, <u>target</u>, <u>instance</u>, database, table, and individual index.</p> <p>Additional Information: For more information, see the Fragmentation Manager topic.</p>

Windows

SQL Sentry allows you to create **Windows** that can be applied in the following places:

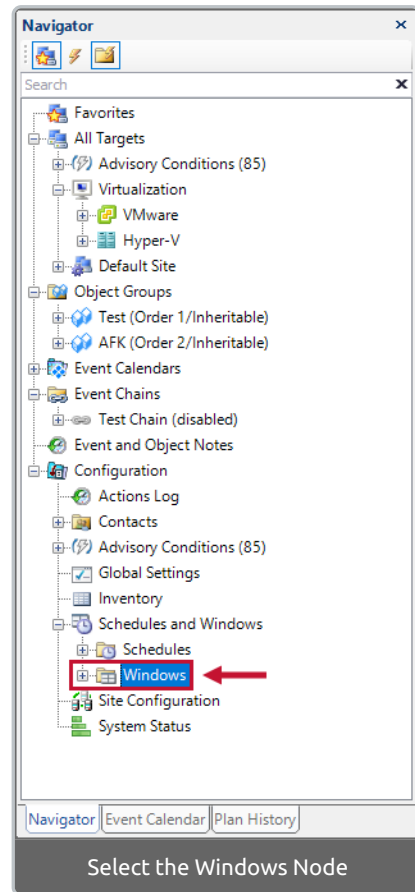
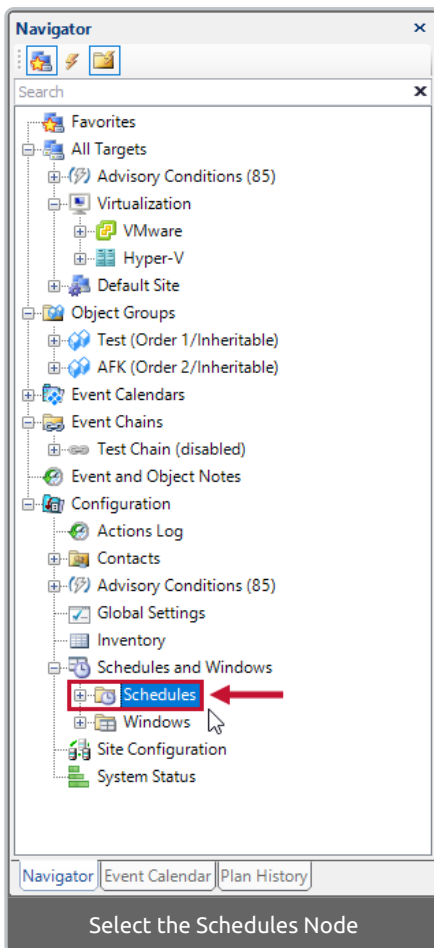
Scenario	Description				
Maintenance Windows	<p>Used to set a schedule for the Maintenance Window. Only Log Actions are triggered for Failsafe Conditions inside the Maintenance Window. Maintenance Window settings allow a time frame to be specified while scheduled maintenance activities take place on that instance.</p> <p>Note: There are several options for configuring Maintenance Windows within SQL Sentry, including Maintenance Windows specific to targets, instances, and the SQL Sentry <u>database</u>.</p>				
	<p>Email and Pager Windows can be assigned to a user or group. Windows control the time frame of when alerts are sent to the user or group. When you assign an Email or Pager Window to a user or group, you have the option to change the Window Behavior to one of the following:</p> <table border="1" data-bbox="386 1991 1401 2080"> <thead> <tr> <th>Option</th> <th>Description</th> </tr> </thead> <tbody> <tr> <td> </td> <td> </td> </tr> </tbody> </table>	Option	Description		
Option	Description				

<p>Scenario</p> <p>Email and Pager Windows for Users and Groups</p>	<p>Definition</p> <p>Perform actions that occur within the window</p>	<p>Description</p> <p>Only email and pager actions that occur during the Window's active time frame are carried out. Email and pager actions that are triggered outside of the active time frame are suppressed.</p>						
	<p>Don't Perform actions that occur within the window</p>	<p>Email and pager actions that occur during the active time frame are filtered or suppressed. Only email and pager actions that occur outside of the Window's active time frame are carried out.</p>						
	<p>Note: To apply an Email or Pager Window to a user or group, double-click the user or group in the Navigator pane to open an Edit User/Group tab. Use the Email or Pager Window drop-down list to choose the desired Window. Use the Email or Pager Window Behavior drop-down list to choose the desired behavior.</p> <p>Additional Information: For more information, see the Contact Management topic.</p>							
<p>Ruleset Windows for configured Actions</p>	<p>Windows may be applied to configured actions that control the time frame of when that action can take place. When you assign a Window to a configured action you have the option to change the Window Behavior to one of the following:</p> <table border="1" data-bbox="389 943 1401 1361"> <thead> <tr> <th data-bbox="389 943 695 1025">Option</th> <th data-bbox="695 943 1401 1025">Description</th> </tr> </thead> <tbody> <tr> <td data-bbox="389 1025 695 1193"> <p>Perform actions that occur within the window</p> </td> <td data-bbox="695 1025 1401 1193"> <p>Only email and pager actions that occur during the Window's active time frame are carried out. Email and pager actions that are triggered outside of the active time frame are suppressed.</p> </td> </tr> <tr> <td data-bbox="389 1193 695 1361"> <p>Don't Perform actions that occur within the window</p> </td> <td data-bbox="695 1193 1401 1361"> <p>Email and pager actions that occur during the active time frame are filtered or suppressed. Only email and pager actions that occur outside of the Window's active time frame are carried out.</p> </td> </tr> </tbody> </table> <p>Note: To apply a Window to a configured action, select the action in the Conditions pane, and then open the Ruleset tab for the selected action. Use the Window drop-down list to select your desired Window. Edit an existing window by selecting Edit, or create a new window by selecting New. Select Window Behavior, or use the Window Behavior drop-down list to choose the desired behavior.</p> <p>Additional Information: For more information, see the Alerting and Responses System topic.</p>		Option	Description	<p>Perform actions that occur within the window</p>	<p>Only email and pager actions that occur during the Window's active time frame are carried out. Email and pager actions that are triggered outside of the active time frame are suppressed.</p>	<p>Don't Perform actions that occur within the window</p>	<p>Email and pager actions that occur during the active time frame are filtered or suppressed. Only email and pager actions that occur outside of the Window's active time frame are carried out.</p>
Option	Description							
<p>Perform actions that occur within the window</p>	<p>Only email and pager actions that occur during the Window's active time frame are carried out. Email and pager actions that are triggered outside of the active time frame are suppressed.</p>							
<p>Don't Perform actions that occur within the window</p>	<p>Email and pager actions that occur during the active time frame are filtered or suppressed. Only email and pager actions that occur outside of the Window's active time frame are carried out.</p>							

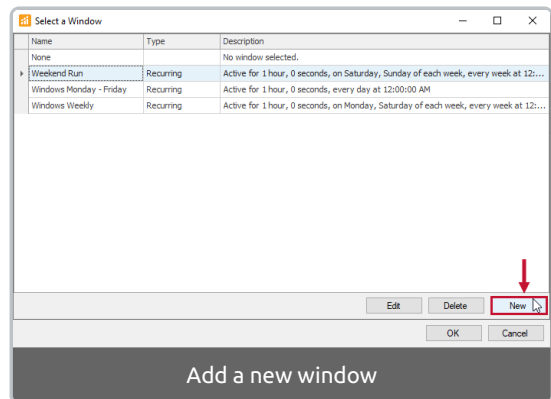
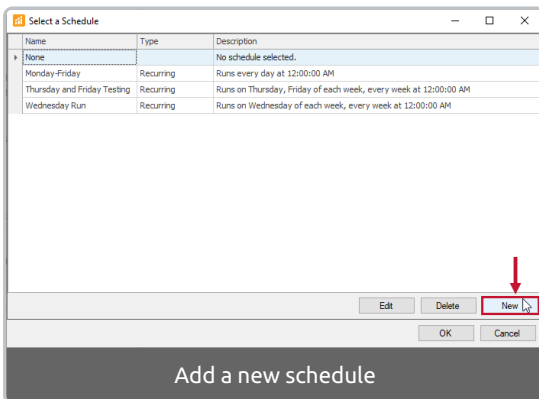
Creating a Schedule or Window

Expand the **Schedules** and **Windows** node in the **Navigator** pane to display the Schedules and Windows nodes. Create a new **Schedule** or **Window** by completing the following steps:

1. Double-click the **Schedules** or **Windows** node to open the **Select a Schedule** or **Select a Window** selection screen.

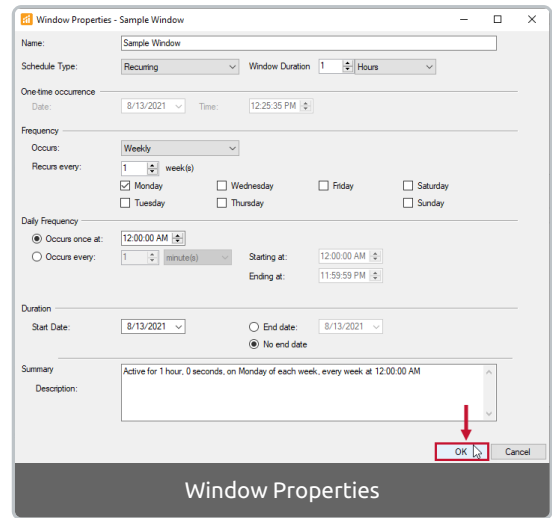
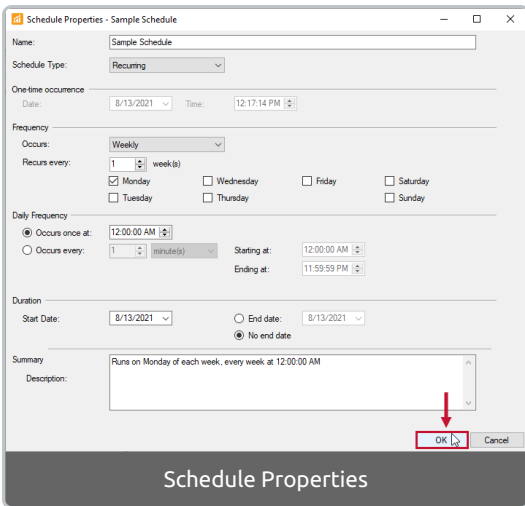


2. Select **New** to open the **Schedule Properties** or **Window Properties** window.



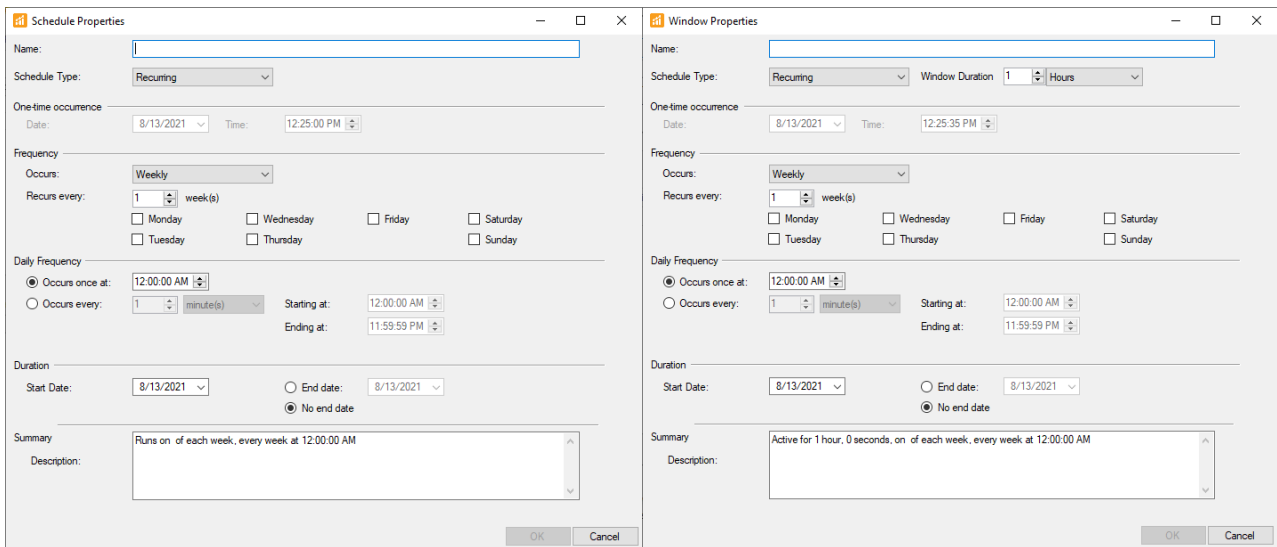
Note: You can also edit existing **Schedules** or **Windows** by selecting a schedule or window and then selecting **Edit**.

3. Enter a name for your **Schedule** or **Window**, then configure the properties. Select **OK** to save your schedule or window.



Schedule or Window Properties Options

The following Schedule or Window Properties options are available:



Section	Description								
Name	The name that is applied to the Schedule or Window .								
Schedule Type	<table border="1"> <thead> <tr> <th>Option</th> <th>Description</th> </tr> </thead> <tbody> <tr> <td>Recurring</td> <td>A recurring Schedule or Window repeats according to the frequency and duration you choose.</td> </tr> <tr> <td>One Time</td> <td>A one time Schedule or Window takes place only on the occurrence date you specify.</td> </tr> <tr> <td>Compound</td> <td>A compound Schedule or Window can be created that combines previously created schedules.</td> </tr> </tbody> </table>	Option	Description	Recurring	A recurring Schedule or Window repeats according to the frequency and duration you choose.	One Time	A one time Schedule or Window takes place only on the occurrence date you specify.	Compound	A compound Schedule or Window can be created that combines previously created schedules.
	Option	Description							
	Recurring	A recurring Schedule or Window repeats according to the frequency and duration you choose.							
One Time	A one time Schedule or Window takes place only on the occurrence date you specify.								
Compound	A compound Schedule or Window can be created that combines previously created schedules.								

Section	Description Specify the duration or length of time that the Window is active.
Window Duration	Note: Window Duration applies only to Windows and is not available for Schedules .
One-time occurrence	Select the time you would like the one-time occurrence of the Schedule or Window to take place. Note: This option is only applicable for schedule type: One Time .
Frequency	The Frequency of the Schedule or Window can be set to either Daily , Weekly , or Monthly . Additional Frequency options are available depending on the chosen occurrence type.
Daily Frequency	Use the Daily Frequency options to select the specific time(s) during the day the Schedule or Window occurs.
Duration	Use the Duration section to specify a Start Date and End Date .
Summary	The Summary description auto-fills according to the chosen options. You may add to the summary or change the text as desired.