

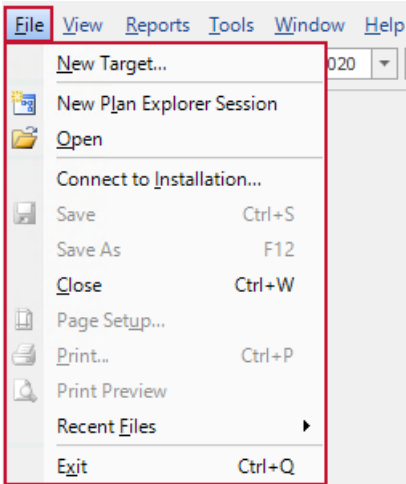
SQL Sentry Menu Options

Last Modified on 19 August 2021

The menus and toolbars are used to operate the [SQL Sentry client](#). The options available within the menus vary depending on the active window. For more information about the toolbars, see the [Toolbars](#) topic.

The following are descriptions of the commands found in the various SQL Sentry menus.

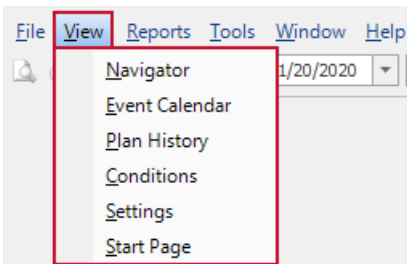
File Menu



Option	Description	Hotkey
New Target	Adds a new <u>target</u> to the Navigator pane.	N/A
New Plan Explorer Session	Opens a new Plan Explorer session.	N/A
Open	Opens execution plan files.	N/A
Connect to an Installation	Specifies the SQL Sentry <u>database</u> and authentication information for the client.	N/A
Save	Saves changes to the active window.	CTRL + S
Save As	Renames and saves the active view.	N/A
Save View As	Renames and saves the existing view.	N/A
Close	Closes the active window.	CTRL + W
Export Data	Exports event list views and various tabs of performance analysis.	CTRL + E
Page Setup	Sets the page options for printing.	N/A

Print Option	Description	N/A Hotkey
Print Preview	Previews the active window for printing, exporting, and send email options.	N/A
Recent Files	Displays a list of recently opened Plan Explorer files.	N/A
Exit	Closes the SQL Sentry Client.	CTRL + Q

View Menu



Option	Description
Navigator	Displays the Navigator pane.
Event View	Displays the Event View pane.
Plan History	Displays the Plan History pane.
Conditions	Displays the Conditions pane.
Settings	Displays the Settings pane.
Start Page	Displays the Start Page.

Calendar Menu

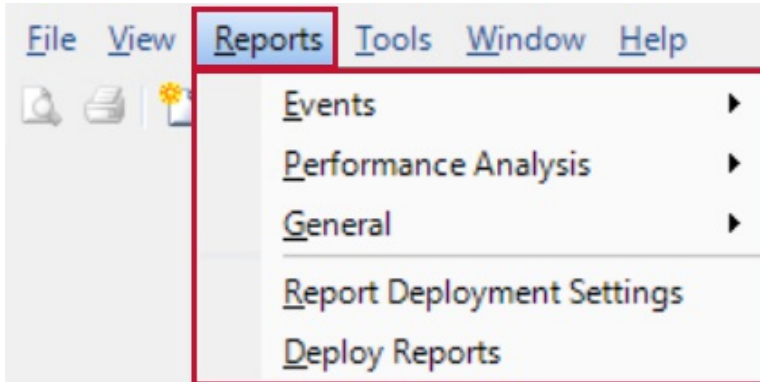


Option	Description
Show Conflicts	Explores conflicts for specified time ranges.

Option	Description
View style	Select the view style for the Event Calendar.

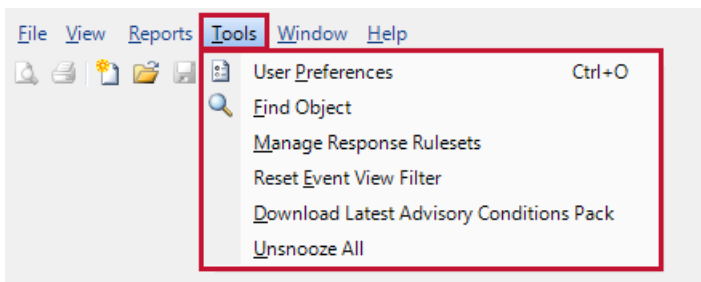
Reports Menu

For more information about the reporting options in SQL Sentry, see the [Reporting](#) topic.



Option	Description
Events	Generate an Event Calendar associated report.
Performance Analysis	Generate a Performance Analysis associated report.
General	Generate a General settings report.
Report Deployment Settings	Settings for the SQL Server report server location that deploys your reports.
Deploy Reports	Deploys the reports to the location specified in the Report Deployment settings.
Import Reports	Imports future reports created by the SQL Sentry development team.

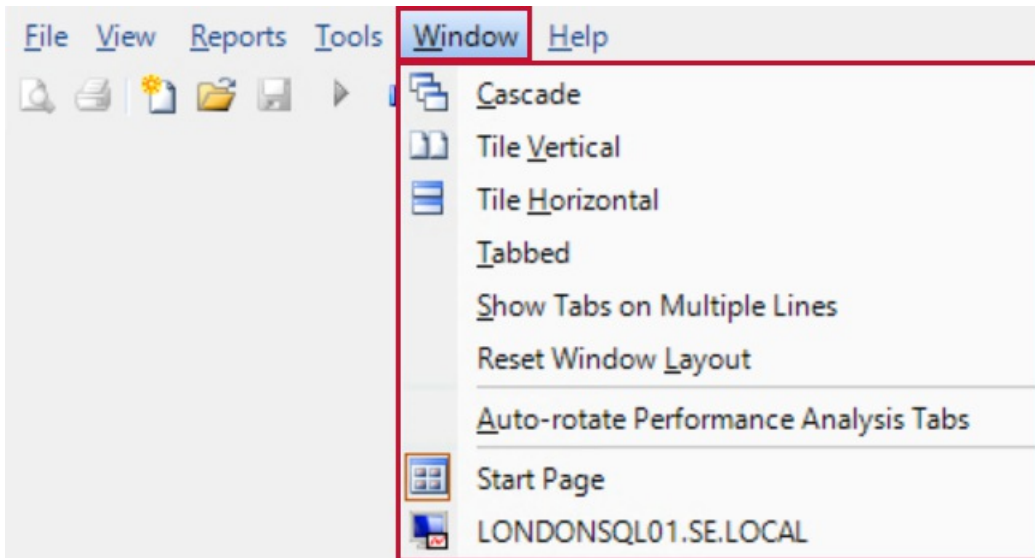
Tools Menu



Option	Description	Hotkey
User Preferences	Opens the SQL Sentry Client User Preferences window and allows you to configure your preferences.	CTRL + O

Option	Description	Hotkey
Find Object	Opens the Event Object Search window that finds <u>event objects</u> within the SQL Sentry client.	Ctrl + F
Manage Response Rulesets	Opens all <u>response rulesets</u> for editing.	N/A
Reset Event View Filter	Restores the <u>event view</u> filter settings to default.	N/A
Reset Layout	Restores the layout to default.	N/A
Download Latest Custom Conditions Pack	Downloads the latest custom condition pack from SQL Sentry.	N/A
Unsnnooze All	Allows all snoozed SQL Sentry actions to occur again.	N/A

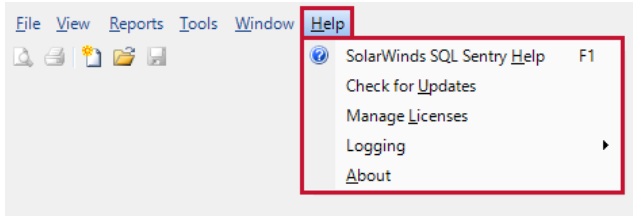
Window Menu



Option	Description
Cascade	Cascades active windows in the workspace view.
Tile Vertical	Tiles active windows vertically in the workspace view.
Tile Horizontal	Tiles active windows horizontally in the workspace view.
Tabbed	Displays active windows on tabs in the workspace view.
Show Tabs on Multiple Lines	Displays multiple rows of tabs.
Auto-rotate Performance Advisor Tabs	Auto-rotates through the active performance analysis windows when enabled. The rotation doesn't change the active tab of a performance analysis window. Whichever tab is selected as active refreshes as the

Option	windows rotate.
Active Windows Name	Displays all active windows.

Help Menu



Option	Description	Hotkey
SQL Sentry Help	Opens the SQL Sentry user documentation .	CTRL + H or F1
Check for Updates	Connects with SQL Sentry's online database and verifies that you have the latest version.	N/A
Manage Licenses	Opens the SolarWinds License Manager where you can view and manage SQL Sentry licenses.	N/A
Logging	Options to enable trace logging for the <u>SQL Sentry client and monitoring service</u> for troubleshooting purposes. Contact support before you enable logging. Logs are stored in the interactive user's AppData\Local\SentryOne directory.	N/A
About	Displays current version, licensing information, and expiration.	N/A