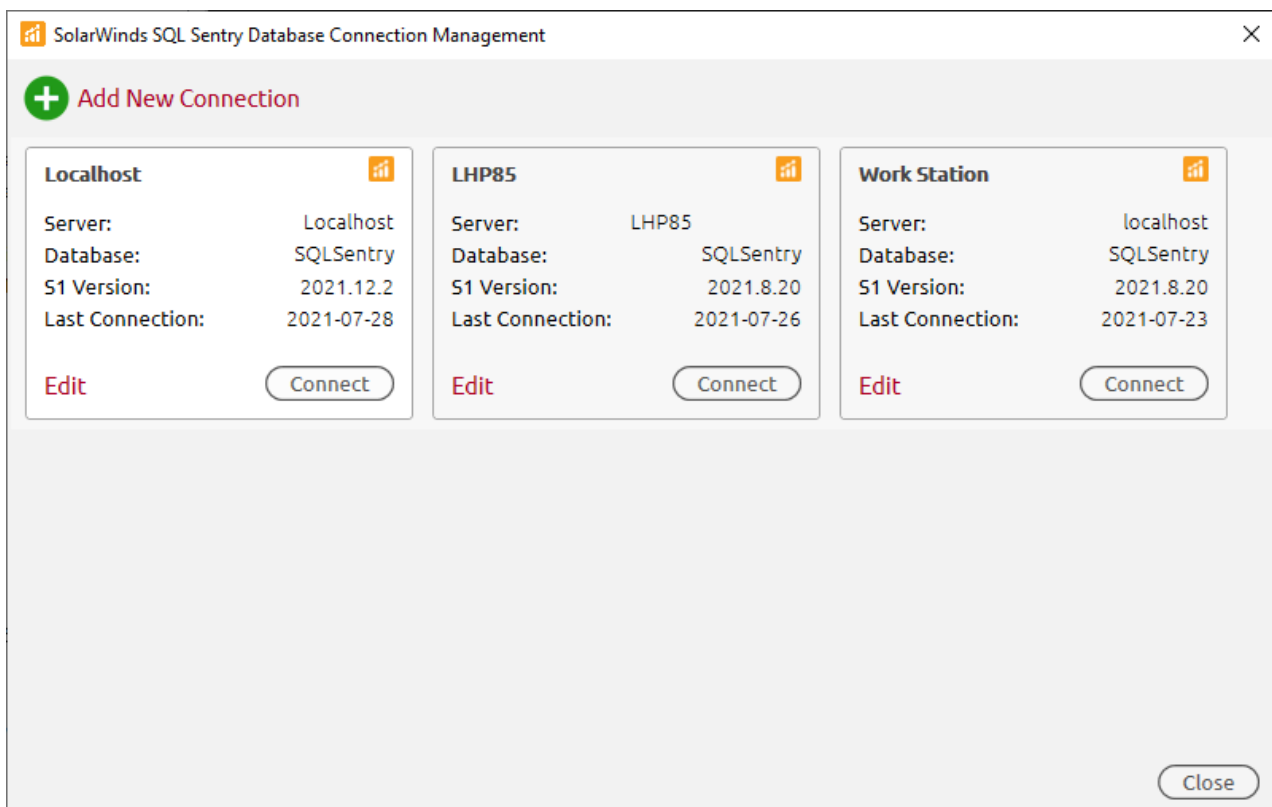


Connecting to an Installation

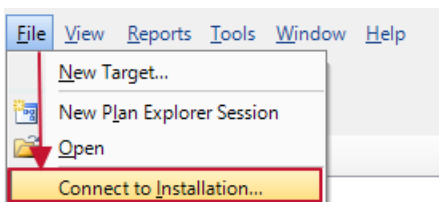
Last Modified on 30 July 2021

Accessing SQL Sentry Database Connection Management

When you start the SQL Sentry client, if you have more than one server in the **SQL Sentry Database Connection Management** menu, you are prompted to choose an installation to connect to. You may have more than one server in the **SQL Sentry Database Connection Management** menu if you have moved the SQL Sentry database to a new location.



If you don't have more than one connection, you are brought directly to the SQL Sentry client when opening the application. To access the **SQL Sentry Database Connection Management** window from the client, select **Connect to Installation** from the **File** menu:



Connection Properties

The **SQL Sentry Database Connection Management** menu controls the active SQL Sentry database for the locally installed SQL Sentry client.

The screenshot shows a dialog box titled "SolarWinds SQL Sentry Database Connection Management" with a close button (X) in the top right corner. The dialog contains the following fields and controls:

- Name:** A text input field.
- *Server Name:** A text input field with an asterisk indicating it is required.
- *Database Name:** A text input field with an asterisk indicating it is required.
- Use Integrated Windows Authentication?** A radio button group with "Yes" selected (indicated by a red dot) and "No" as an option.
- SQL login name:** A text input field.
- Password:** A text input field.

At the top right of the dialog, there is a link labeled "Show Advanced Properties".

At the bottom left, there is a link labeled "Remove Connection".

At the bottom right, there are three buttons: "Connect", "Save", and "Back".

Below the input fields, there is a status message: "Connection created on 2021-07-28" and "Last updated on 2021-07-28".

Specifying the Server

Enter the name of the server to connect to in the field provided.

Specifying the Database Name

Specify the database name that the SQL Sentry database connects to.

Using the Integrated Windows Authentication

By default, this option is selected. To use the SQL Server authentication, select **No**, and then enter the SQL Server credentials. After connecting to the server, a new instance of the SQL Sentry client launches that connects to the specified alternate installation.

SolarWinds SQL Sentry Database Connection Management

Show Advanced Properties

Name: QA-SRV-1

*Server Name: QA-SRV-1

*Database Name: SQLSentry

Use Integrated Windows Authentication? Yes No

*SQL login name: sql_jesseS

*Password: ●●●●●●●●●●

Connection created on 2021-07-28
Last updated on 2021-07-28

Remove Connection

Connect Save Back

Advanced Properties

Select **Show Advanced Properties** to access advanced options.

SolarWinds SQL Sentry Database Connection Management

Hide Advanced Properties

Name: QA-SRV-1

*Server Name: QA-SRV-1

*Database Name: SQLSentry

Use Integrated Windows Authentication? Yes No

*SQL login name: sql_jesseS

*Password: ●●●●●●●●●●

*Port Number: 1433

Packet Size: 4096 bytes

Encrypt Network Traffic: Yes No

Trust Server Certificate: Yes No

Multi Subnet: Yes No

Connection created on 2021-07-28
Last updated on 2021-07-28

Remove Connection

Connect Save Back

Port Number

The default port is 1433 for SQL Server. See the [Performance Analysis Required Ports](#) article for additional information. See the [Setting the Connection Properties](#) topic from Microsoft Docs for more information on the *portNumber* property.

Packet Size

The default size is 4096 bytes. See the [Configure the network packet size Server Configuration Option](#) topic from Microsoft Docs for additional information on SQL Server network pack sizes.

Encrypt Network Traffic

The default value is **No**. Set to **Yes** to use encrypted connections between the SQL Sentry database server, SQL Sentry monitoring services, and SQL Sentry client.

⚠ Important: To use this property, you must first complete the steps to [Enable Encrypted Connections to the Database Engine](#) as outlined in Microsoft Docs.

Trust Server Certificate

The default value is **No**. Set to **Yes** to trust SQL Server's SSL Certificate without additional validation. See the [Setting the Connection Properties](#) topic from Microsoft Docs for more information on the *trustServerCertificate* property.

⚠ Important: If you choose to **Encrypt Network Traffic**, then this property must be set to **Yes**.

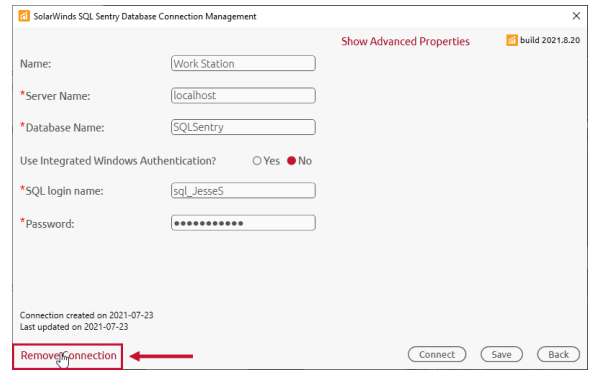
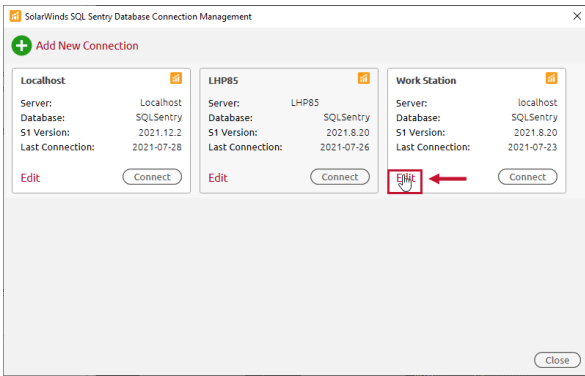
Multi Subnet

The default value is **No**. Set to **Yes** if this SQL Server connection uses a Multi Subnet Failover. See the [Setting the Connection Properties](#) topic from Microsoft Docs for more information on the *multiSubnetFailover* property.

Removing a Connection

Old servers may be removed through the **Edit** option on the **SQL Sentry Database Connection Management** window. To remove an old server from the **SQL Sentry Database Connection Management** menu so that you are no longer notified about it when opening the SQL Sentry client, complete the following steps:

1. Choose the server you would like to remove, select **Edit**, and then at the bottom of the screen select **Remove Connection**.



2. Select **OK** to delete the desired connection.

