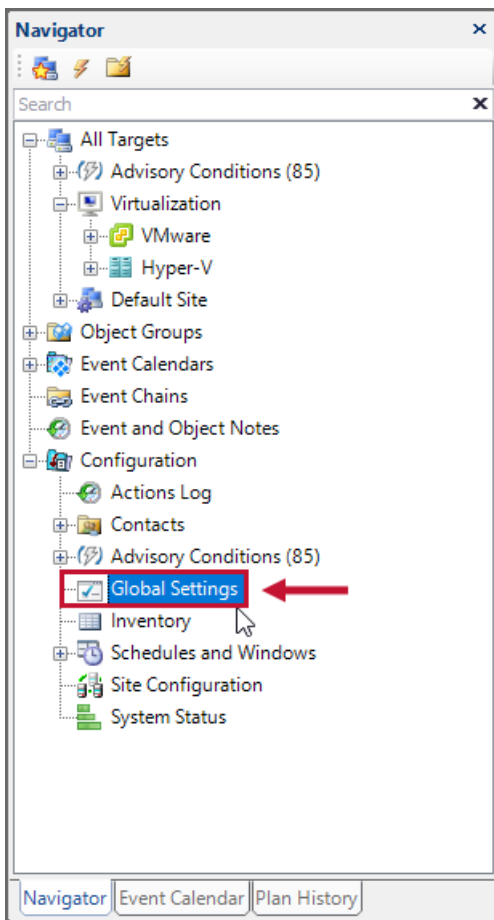


SMTP Settings

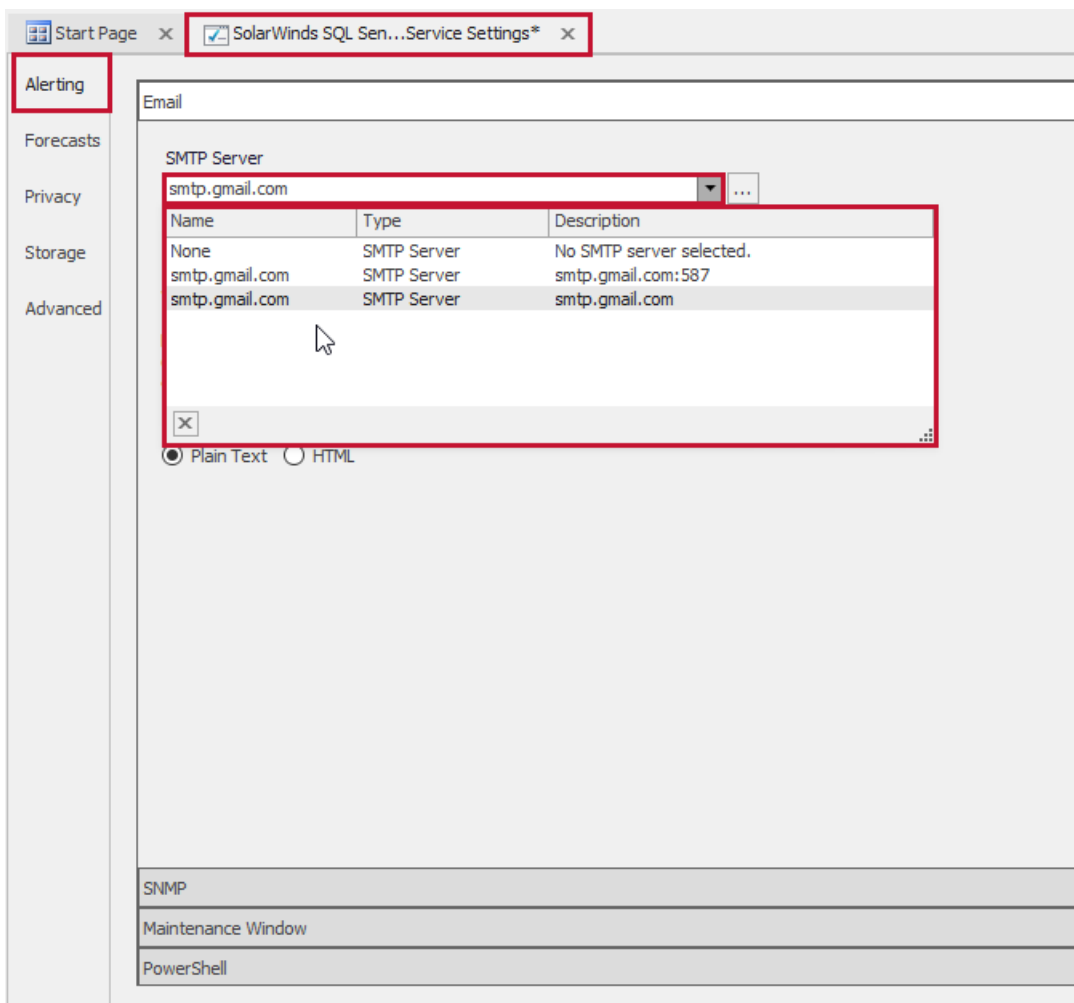
Last Modified on 30 July 2021

Configuring SMTP Settings in SQL Sentry

To configure **SMTP** settings in SQL Sentry, open the **Navigator** pane (**View > Navigator**), and then select the **Global Settings** node (**Configuration > Global Settings**) to open **SQL Sentry Monitoring Service Settings**. The **Alerting** tab displays by default.



In the **Alerting** tab, use the drop-down **SMTP Server** box to select an existing SMTP server, or select **...** to open the **Select an SMTP Server** dialog box, and configure a new SMTP server.

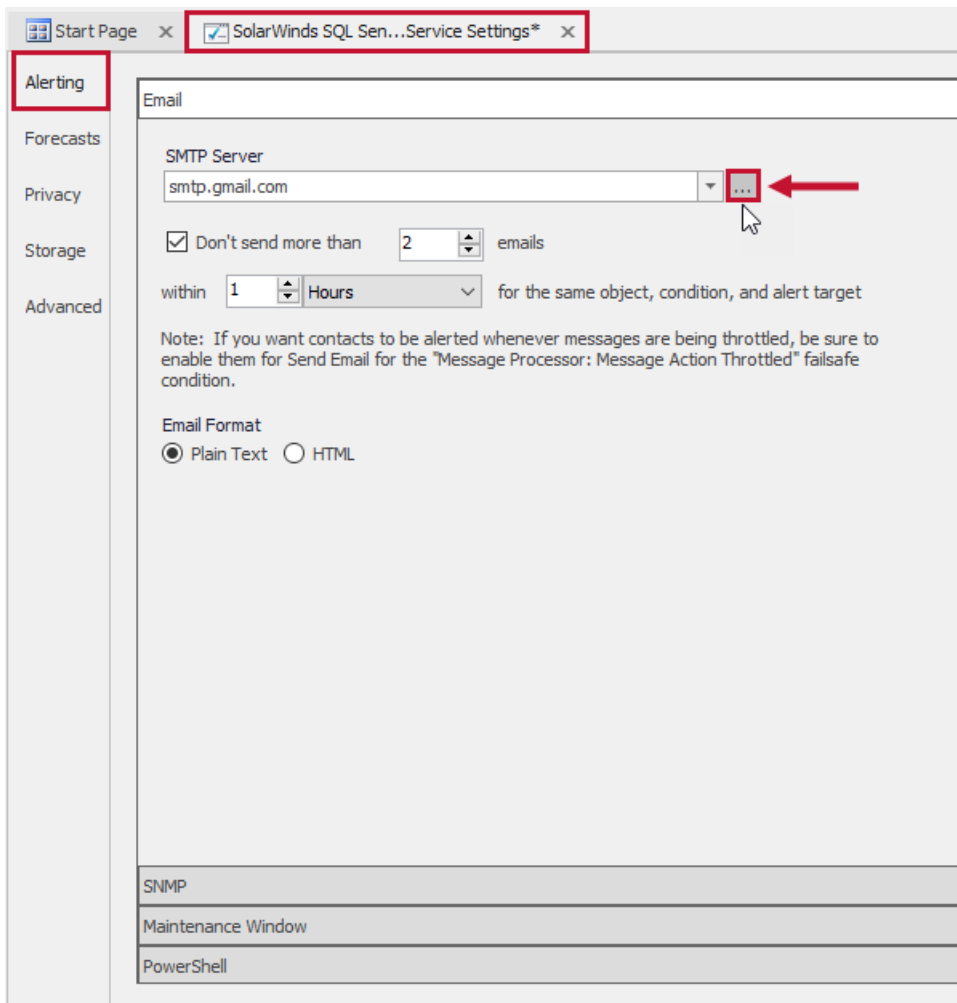


Note: If using localhost, keep in mind this is the local SMTP server on the machine where the monitoring service is installed because it's responsible for sending all notifications. The SQL Sentry client doesn't send any notifications.

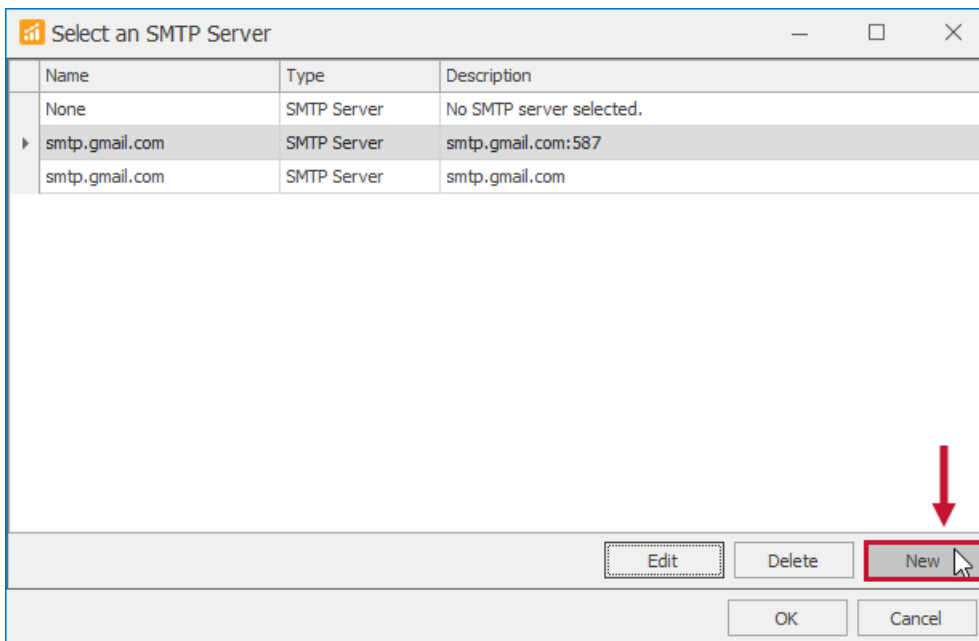
Note: Contact your network administrator to ensure that the IP address of the monitoring service computer has been granted both **Connect** and **Relay** permissions for the specified SMTP server.

Adding a New SMTP Server

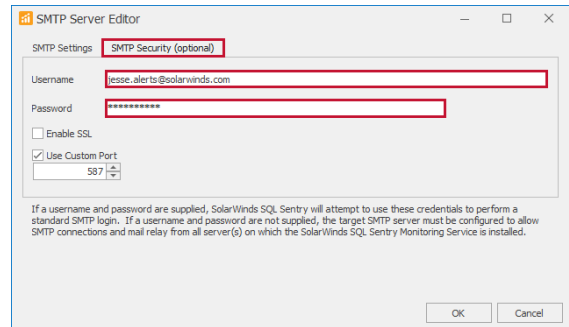
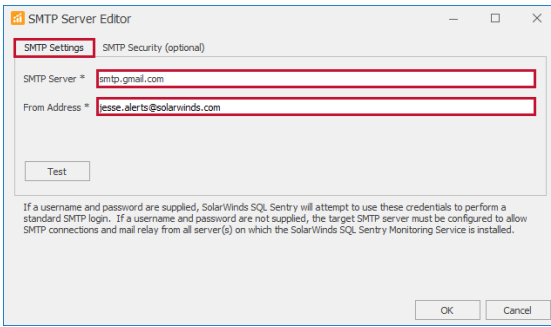
1. From the **Alerting** tab, select **...** to open the **Select an SMTP Server** dialog box.



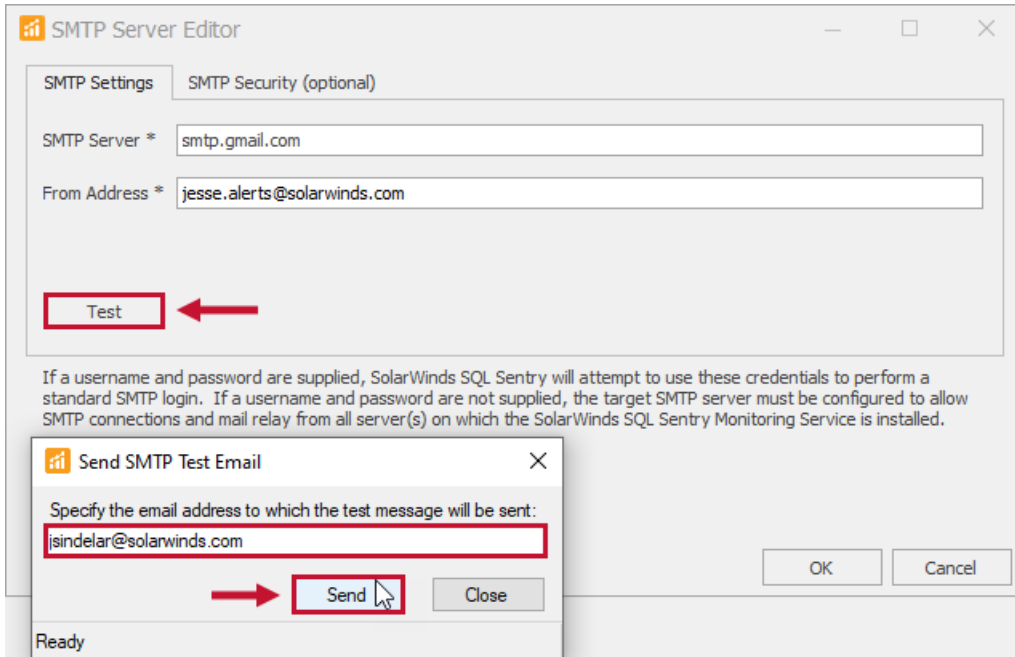
2. Select **New** to open the **SMTP Server Editor** dialog box.



3. Enter the IP address or the domain name of the SMTP Server in the **SMTP Server** box. Enter the email that you want to send the notifications in the **From Address** box. Enter your security credentials in the **SMTP Security** tab.



4. Select **Test** to open the **Send SMTP Test Email** box, and then enter an email in the slot provided. Select **Send** to send the test email to the desired address.



5. Select **Save** on the toolbar to save the SMTP settings.



⚠ Important: For the most accurate SMTP test, use the SQL Sentry client installed on the server computer to send the test message. If you use a SQL Sentry client on a different computer, such as your local workstation, the results may differ. For example, your SMTP server may allow relay from your workstation but not from the SQL Sentry Server computer, in which case the test from your workstation would succeed; but the SQL Sentry Server would be unable to deliver notifications.

📌 Note: Configure multiple SMTP Servers in an SMTP Server group to use SQL Sentry's failover capabilities. For more information about configuring an SMTP Server group, and the SMTP Server group failover process, see the [Monitoring Service SMTP Configuration](#) article.