

# SQL Sentry Installation

Last Modified on 25 May 2021

## Overview and Notes

**Note:** The product has been rebranded since the video below was created, however, the overall process is still the same.

**Note:** The instructions in this article are recommended for smaller environments (i.e. estates with a single monitoring service or client) and those who do not need a command line experience for streamlining the installation or upgrade processes.

SQL Sentry offers an Enhanced Platform Installer which increases the speed and simplicity of installing and upgrading SQL Sentry implementations through a command line interface and is recommended for larger estates that will have more than one monitoring service or client. To use the EPI installation method, see the [EPI article](#).

**Note:** If you are upgrading SQL Sentry from a previous version, it's strongly recommended that you back up your SQL Sentry database prior to beginning the process. For more information about upgrading SQL Sentry, see [Steps to Upgrade to a New Version of SQL Sentry](#).

**Important:** SQL Sentry doesn't currently support Group Management Services (GMS) accounts.

Log into your [SolarWinds account](#), and download the latest build of SQL Sentry. Once you've saved the download to your computer, copy the installation file to the server where you want to install the [SQL Sentry monitoring service](#), and then double-click the installation file.

## Choosing the Locations of the SQL Sentry Components

### Determining the Monitoring Service Computer

**Note:** For initial installation, it's recommended that you first determine where you will install the [monitoring service](#), and then install both the SQL Sentry monitoring service and [client](#) together on that computer. This is analogous to installing the native client tool and SQL Server on the same computer.

Even if you don't plan on using the SQL Sentry client regularly from the machine, the SQL Sentry client is used to enter your license key and enables you to complete the licensing process during the initial installation. You are prompted to launch the SQL Sentry client and enter your license key at the end of the installation.

**Note:** For more information about where components are typically installed, see the [Installation Recommendations](#) topic.

### SQL Sentry Portal

[SQL Sentry Portal on-premises](#) is part of the **Complete Install**. It can be installed on a machine along with the [SQL Sentry monitoring service](#) and [SQL Sentry client](#), or it can be installed on a machine by itself without any other SQL Sentry components (**Custom Install**). Review the [SQL Sentry Portal Configuration](#) article before installing.

Once you have gone through the SQL Sentry installation process for the SQL Sentry monitoring service or SQL Sentry client, SQL Sentry Portal cannot be installed separately on the same machine after the installation. It may be installed as part of the initial installation or during a SQL Sentry upgrade.

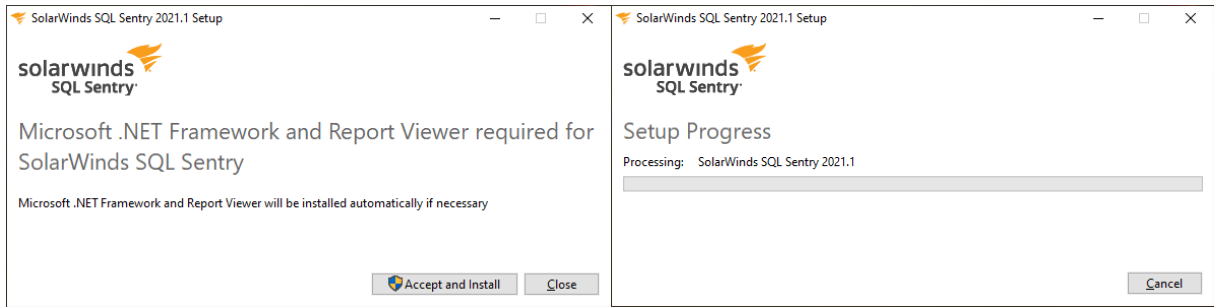
If you need to install SQL Sentry Portal on a machine that already has the SQL Sentry monitoring service or client of the same version, you must first uninstall the SQL Sentry client and SQL Sentry monitoring service from the machine and reinstall them as part of the SQL Sentry Portal installation. This does not require removing/recreating an existing [SQL Sentry database](#). You will need to choose to connect to the existing database during the installation process.

### Choosing the Install Location

Setup shows the default install location. Select **Next** to use the default location. To install to a different location, select **Browse**, then select the appropriate location.

## Executing the SQL Sentry Application File

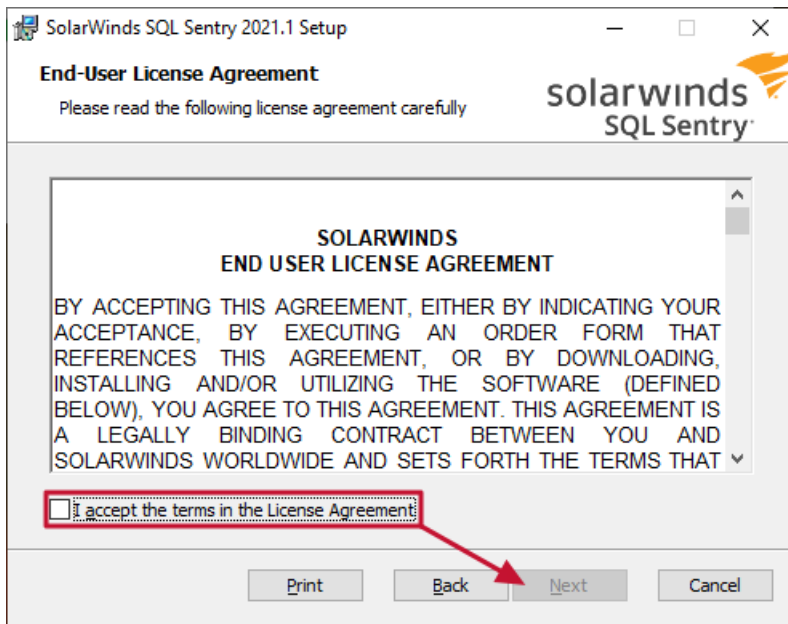
1. Execute the **SQLSentrySetup-x64.exe** file. You'll need to select **Accept and Install**. The **Microsoft .NET Framework** and **Report Viewer** will be included with the SQL Sentry installation (if necessary).



2. A welcome dialog displays when the **SolarWinds SQL Sentry Setup** program starts. Select **Next** to continue or **Cancel** to exit.



3. Then, the **End-user license Agreement** dialog appears. Select the checkbox to accept the terms, then choose **Next** to continue.

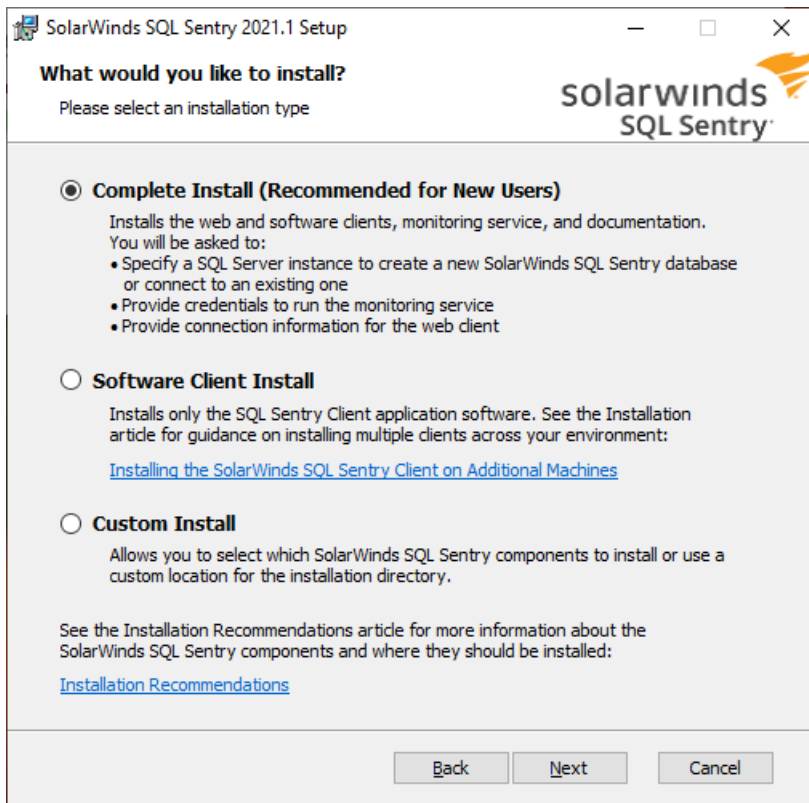


**Note:** For future reference, a copy of the license file is located in the **Client** folder of the installation.

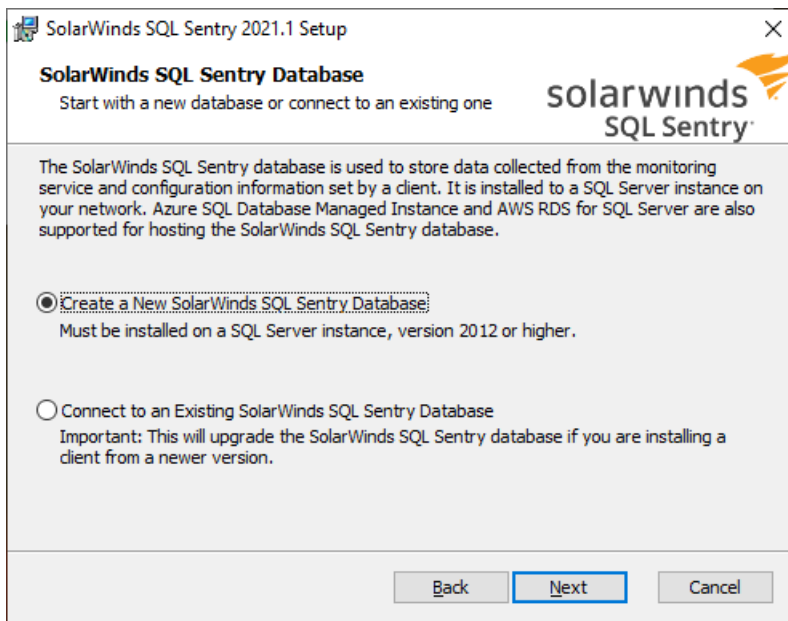
**Note:** If the setup program detects that SQL Sentry is already installed, it prompts for removal. The installation process enables you to easily upgrade from previous versions and maintain all of your existing configuration settings, including any users and groups, notification settings, etc. Any time SQL Sentry is upgraded or another component is installed, the existing software is first uninstalled. This ensures that all components are of the latest version, and compatible. This only applies to the client and server files; the SQL Sentry database, where all of your settings and history are kept, is not removed.

**Important:** The .NET Framework 4.7.1 is required for all installations. A reboot may be required if the .NET Framework files are in use. Temporarily stopping any applications that make use of the .NET Framework can help to avoid a reboot.

4. On the **What would you like to install?** screen, choose an installation option. By default, the **Complete Install** option is selected (and used in this example). It installs the SQL Sentry client, SQL Sentry monitoring service, SQL Sentry Portal, and a PDF copy of the user documentation.



5. On the **SolarWinds SQL Sentry Database** screen, choose **Create a New SolarWinds SQL Sentry Database** (default) or **Connect to an Existing SolarWinds SQL Sentry Database** (most commonly used for an [upgrade](#) or installing an additional SQL Sentry components on other machines). This example uses **Create a New SolarWinds SQL Sentry Database**.



6. On the **Create New SolarWinds SQL Sentry Database** screen, choose a location and name for the SQL Sentry database. Enter the server instance where you'd like to install the SQL Sentry database in **SQL Server Name**. Enter a name for the SQL Sentry database in **Database Name**. The default **Database Name** is *SQLSentry*. The SQL Sentry database is created as part of the installation process. If you're upgrading SQL Sentry, specify the name of the existing SQL Sentry database (past default SQL Sentry database names have included *SentryOne*). All the necessary schema changes are applied to the existing database during an upgrade.

The **Authentication Mode** options available for connecting to the SQL Server that hosts the SQL Sentry database are **Windows Authentication** and **SQL Server Authentication**. If the Windows user account you're using for the installation doesn't have the required privileges on the selected SQL Server, select **SQL Server Authentication** and enter a SQL Server **User Name** and **Password** for an account with required SQL Server privileges. See the [Monitoring Service Security](#) article for the account's full security requirements.

Select **Test** to validate the database account information. After a successful test, select **Next** to continue the setup.

**Example uses Windows Authentication & includes SQL Sentry Portal**

After selecting **Test**, a popup will confirm your database selection:

**Note:** If an existing database has been chosen, selecting **Test** asks you to confirm that you want to upgrade the database.

7. If you've selected **Windows Authentication** for the **Monitoring Service SQL Credentials**, enter the Windows account **User Name** and **Password** on the **Monitoring Service Account Information** screen, under which the SQL Sentry monitoring service will run. Select **Test** to validate the chosen credentials. After a successful test, select **Next** to continue the setup.

**Note:** See the [Monitoring Service Security](#) article for the account's full security requirements.

### Monitoring Service Account Information and Test

After selecting **Test**, a popup will confirm your service account validation:

**Monitoring Service Account Information**  
Specify the account information for the SolarWinds SQL Sentry Monitoring Service

Enter the credentials for the Windows user account that will run the SolarWinds SQL Sentry Monitoring Service, then select Test to validate the account.

The SolarWinds SQL Sentry Monitoring Service is a Windows service that runs in the context of a domain account.

If this account does not have sysadmin privileges, see the Monitoring Service Security article for a complete list of roles and permissions that are needed:  
[Monitoring Service Security](#)

User Name:  Password:

**Note:** Change the service account any time after the initial installation by running the [Service Configuration Utility](#) found in the SQL Sentry program group. See the [Monitoring Service Logon Account](#) article for instructions.

- On the **Portal Configuration Information** screen, choose an **Authentication Mode** for the [SQL Sentry Portal service](#) to connect to the SQL Sentry database and enter those credentials. **Note:** It is necessary to enter the credentials on this screen for either authentication option. The **Test** will fail if the credentials are blank.

**SQL Sentry Portal Configuration Information and Test**

**Portal Configuration Information**  
Specify connection information for Portal

SolarWinds SQL Sentry Portal uses your existing SolarWinds SQL Sentry database to display data. Enter the server name where your SolarWinds SQL Sentry database is hosted and the name of the SolarWinds SQL Sentry database you want SolarWinds SQL Sentry Portal to use when connecting.

SQL Server Name:  Existing Database Name:

**Authentication Mode**  
Select the authentication method to use for connecting SolarWinds SQL Sentry Portal to your SolarWinds SQL Sentry database, then enter the credentials.

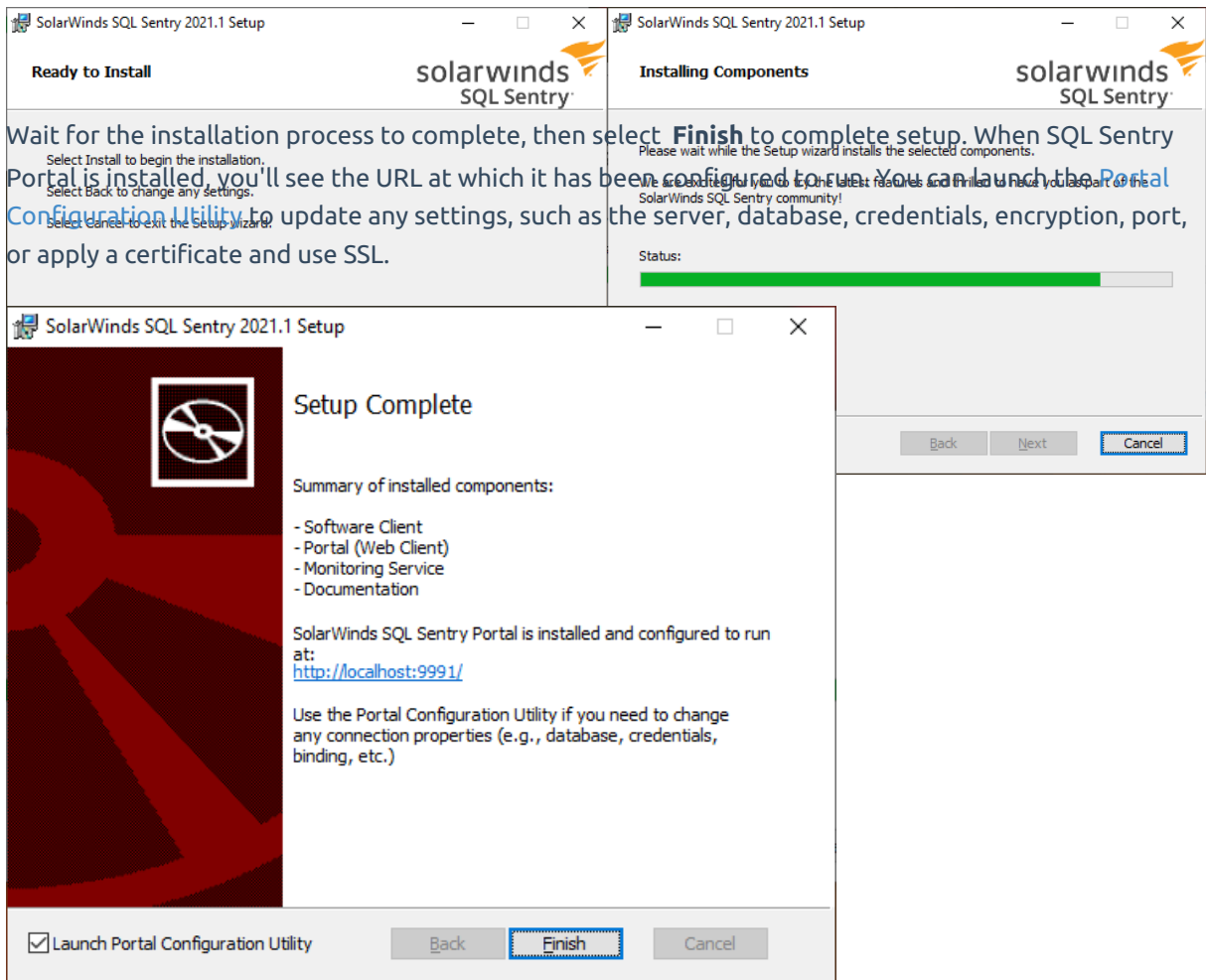
Windows Authentication  SQL Server Authentication

User Name:  Password:

After selecting **Test**, a popup will confirm your service account validation:

- On the **Ready to Install** screen, select **Install** to begin installation.

10. Wait for the installation process to complete, then select **Finish** to complete setup. When SQL Sentry Portal is installed, you'll see the URL at which it has been configured to run. You can launch the **Portal Configuration Utility** to update any settings, such as the server, database, credentials, encryption, port, or apply a certificate and use SSL.



**Note:**

- If you did a custom install that didn't install SQL Sentry Portal, you won't see the **Launch Portal Configuration Utility** option.
  - You may see an option to launch the **Software Client** instead if it was part of the installation.
- If you didn't install the SQL Sentry client, install it on another machine and run it to enter your license key and complete the [licensing](#) process.

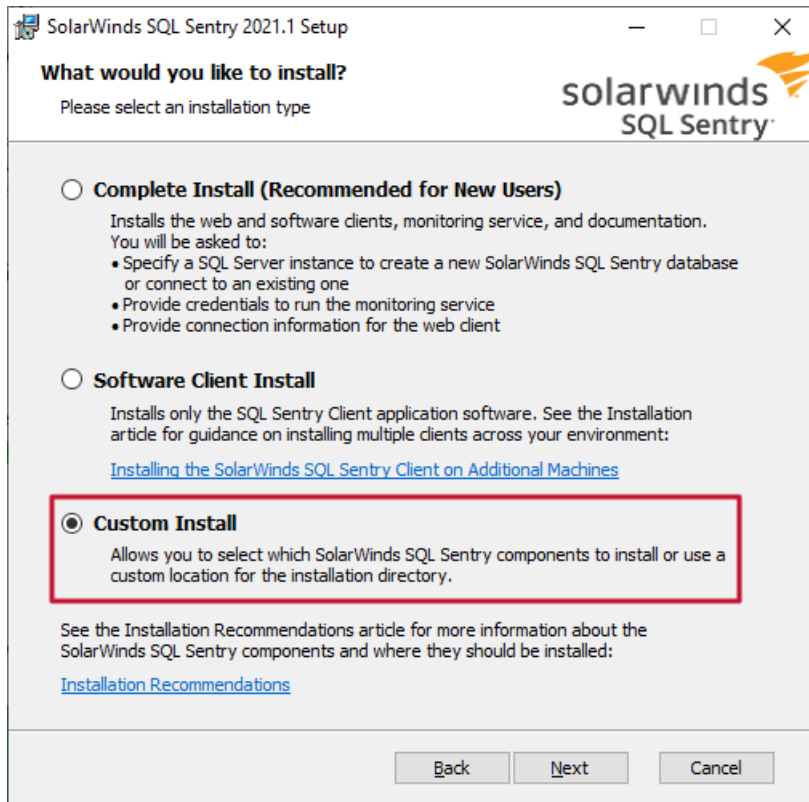
**Success:** You've completed the SQL Sentry installation process! What's next?

- Continue to the [Onboarding](#) article to get into SQL Sentry and start monitoring your environment.
  - This is not required for an upgrade. All previous settings have been retained.
- Install additional monitoring services as described below (see the [Installation Recommendations](#) article to learn more about how many monitoring services you may need).
- Install the SQL Sentry client on additional machines as described below.

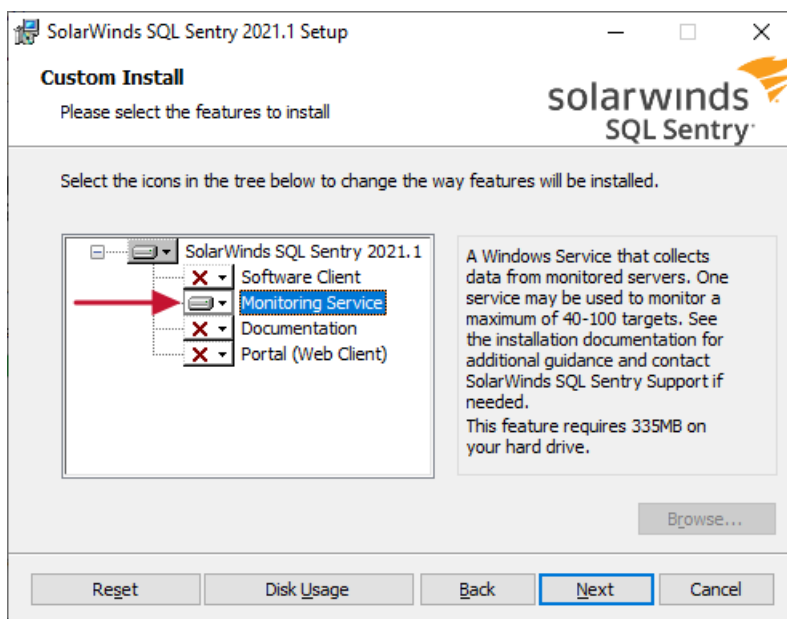


# Installing only the Monitoring Service

1. On the **What would you like to install?** screen, choose **Custom Install**.



2. To install the SQL Sentry monitoring service on a machine, select only the **Monitoring Service** option on the **Custom Setup** screen of the installation process.



## Installing Additional Monitoring Services

The number of monitoring services required for your SQL Sentry enterprise depends on the number of targets

you are monitoring and other factors related to the overall workload. After completing the installation process, you may want to install additional monitoring services. Please see the [Monitoring Services and Targets per Site](#) section of the [Installation Recommendations](#) article for guidance on selecting the correct number of monitoring services for optimal performance.

## Installing SQL Sentry Portal

The [SQL Sentry Portal](#) may be installed on a machine by itself. There's no need to have a SQL Sentry monitoring service or SQL Sentry client on the machine where it is installed. When installing SQL Sentry Portal by itself, it must be done after a SQL Sentry installation has been completed to create the database and at least one installed monitoring service exists in the overall setup. Follow the instructions in this section to install SQL Sentry Portal by itself and connect to an existing SQL Sentry database.

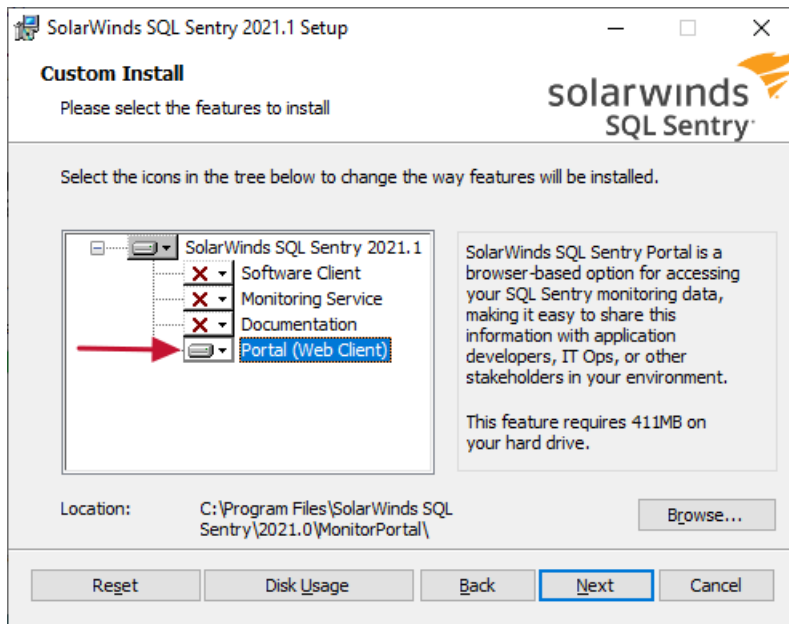
[Additional Information](#): Review the [SQL Sentry Portal Configuration](#) article for additional security requirements and information, how to use the **Portal Configuration Utility** to update settings after installation, and details on how to access the SQL Sentry Portal in your browser.

To install SQL Sentry Portal complete the following:

1. On the **What would you like to install?** screen, choose **Custom Install**.



2. On the **Custom Install** screen, select the drop-down arrow next to the **Portal (Web Client)** component. Select the **Entire feature will be installed on local hard-drive** option.



3. Select **Entire feature will be unavailable** next to the other components if you are installing only the **Portal (Web Client)** service.

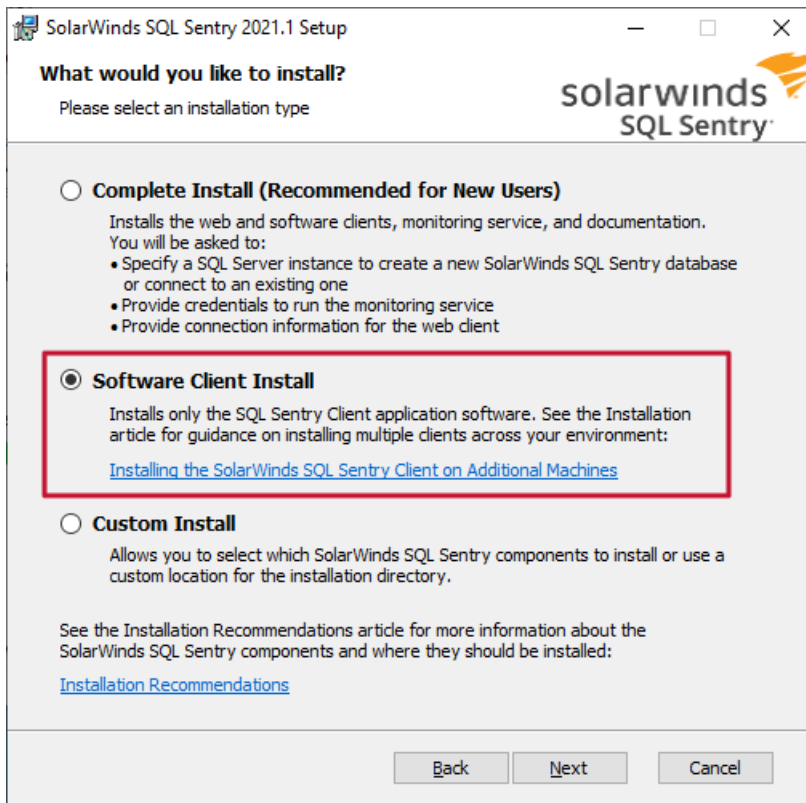
4. Follow the [instructions above](#) for filling out SQL Sentry Portal-related screens.

## Installing the SQL Sentry Client on Additional Machines

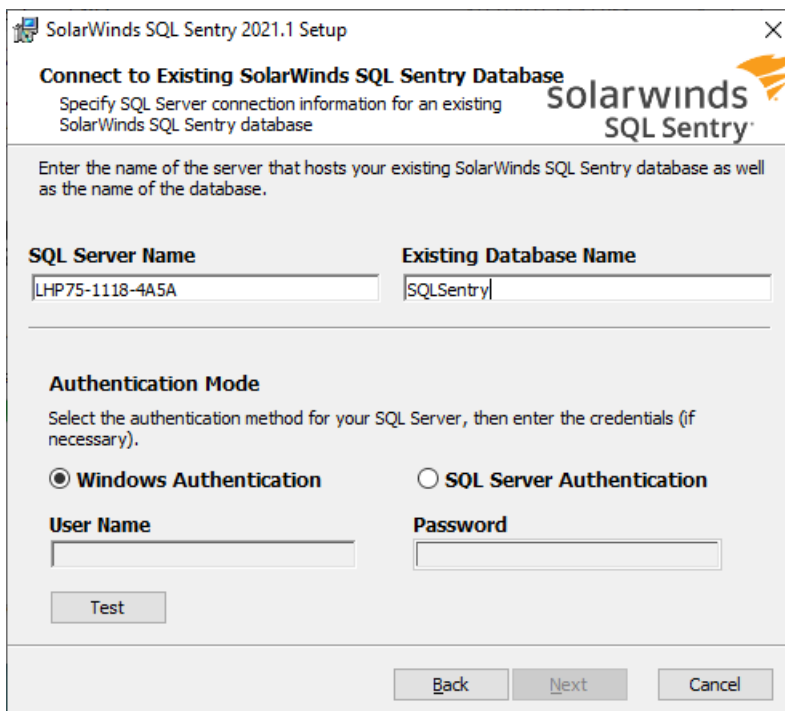
### Workstation Computers

There's no need to install a monitoring service on any workstation machines. To install just the SQL Sentry Software Client do the following:

1. On the **What would you like to install?** screen, choose the **Software Client Install** option. Select **Next** to continue.



2. On the **Connect to Existing SQL Sentry Database** screen enter the information needed to connect to your existing SQL Sentry database installation.



3. Select **Test** to validate your connection details, then **Next** to continue installing the **Software Client**.